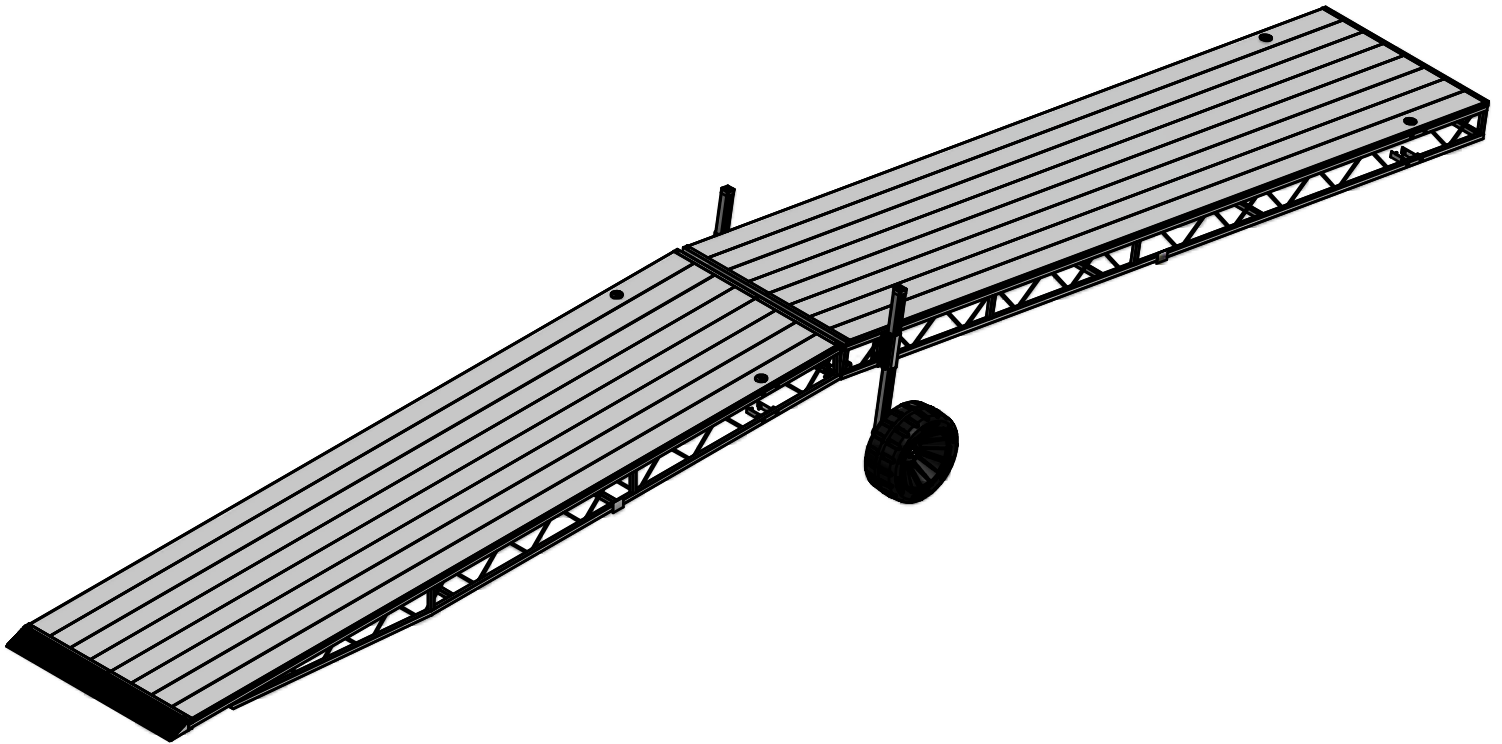


QUICK PIVOT FOR SHOREWAY ASSEMBLY INSTRUCTIONS

HARDWARE KIT P/N 510-05603-00 - 510-05610-00

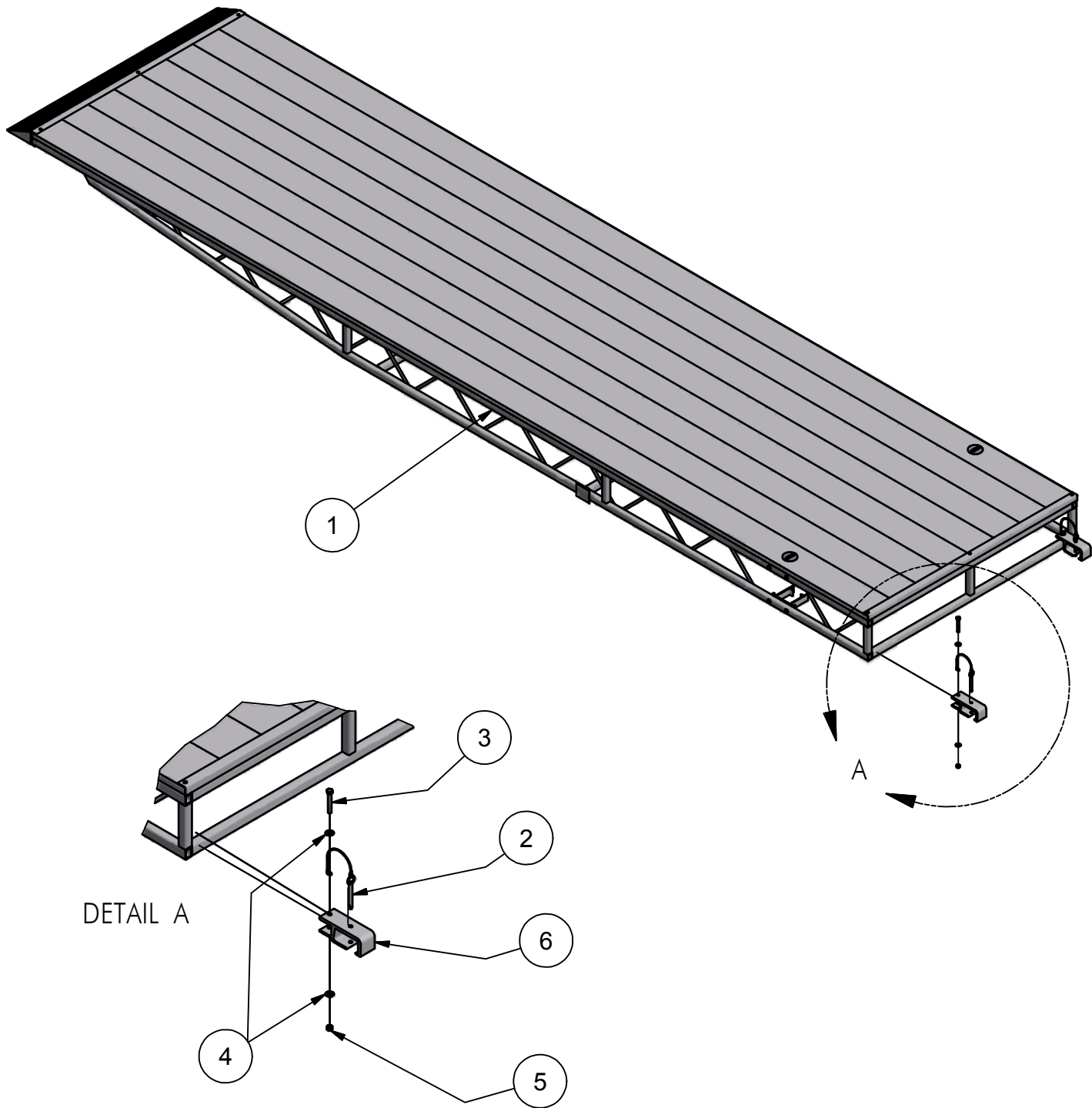


TOOLS REQUIRED

- 9/16" SOCKET
- 9/16" WRENCH
- TORQUE WRENCH

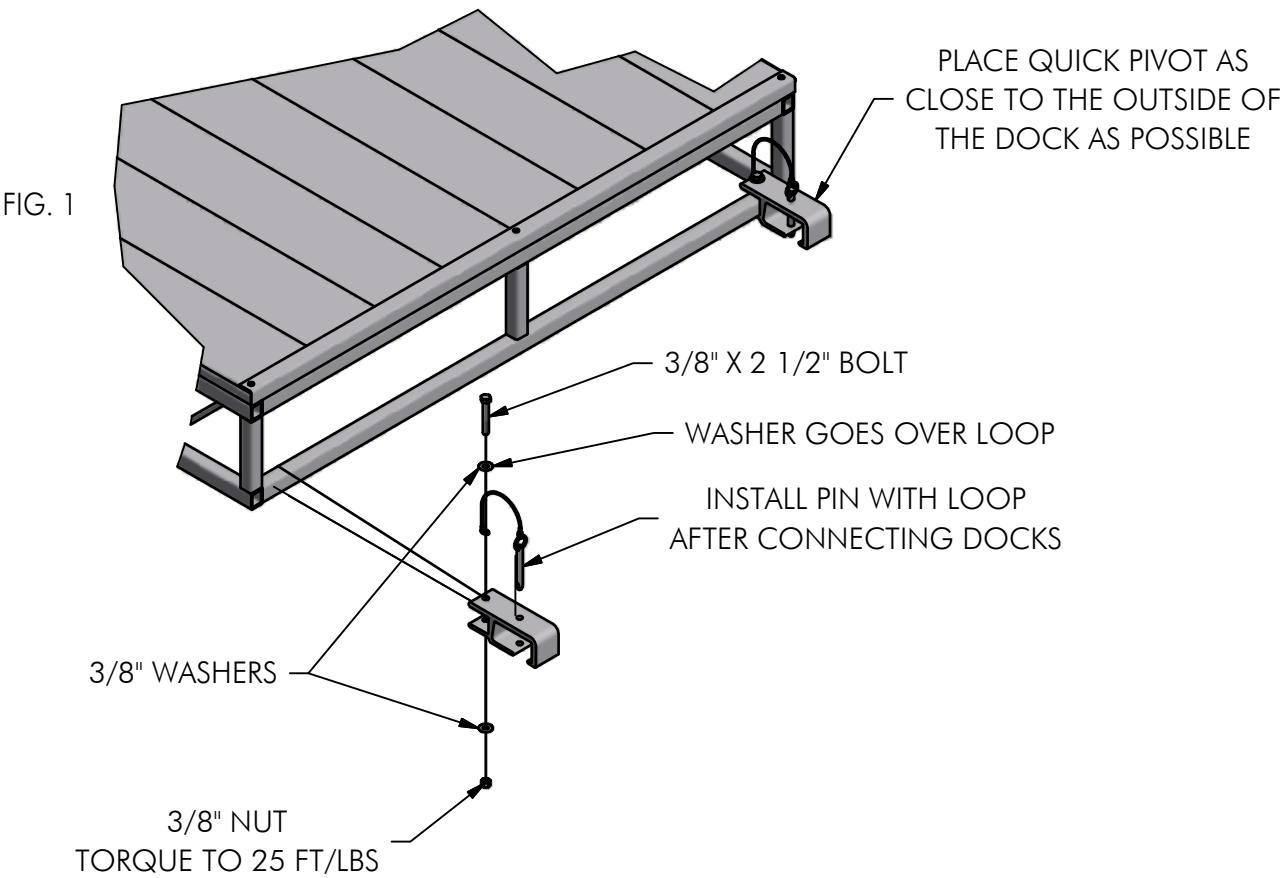
PARTS LIST/EXPLODED VIEW

ITEM	QTY	PART NUMBER	DESCRIPTION
1	1	-	SHOREWAY DOCK
2	2	001-26729-00	PIN, QUICK RELEASE W/RING GRIP 2-3/4" LONG
3	2	001-70113-00	HHCS 3/8-16 x 2 1/2" SS
4	4	001-71017-00	FLAT WASHER 3/8", SS
5	2	001-76349-00	NUT 3/8", ALUMINUM
6	2	002-02083-00	PIVOT, QUICK



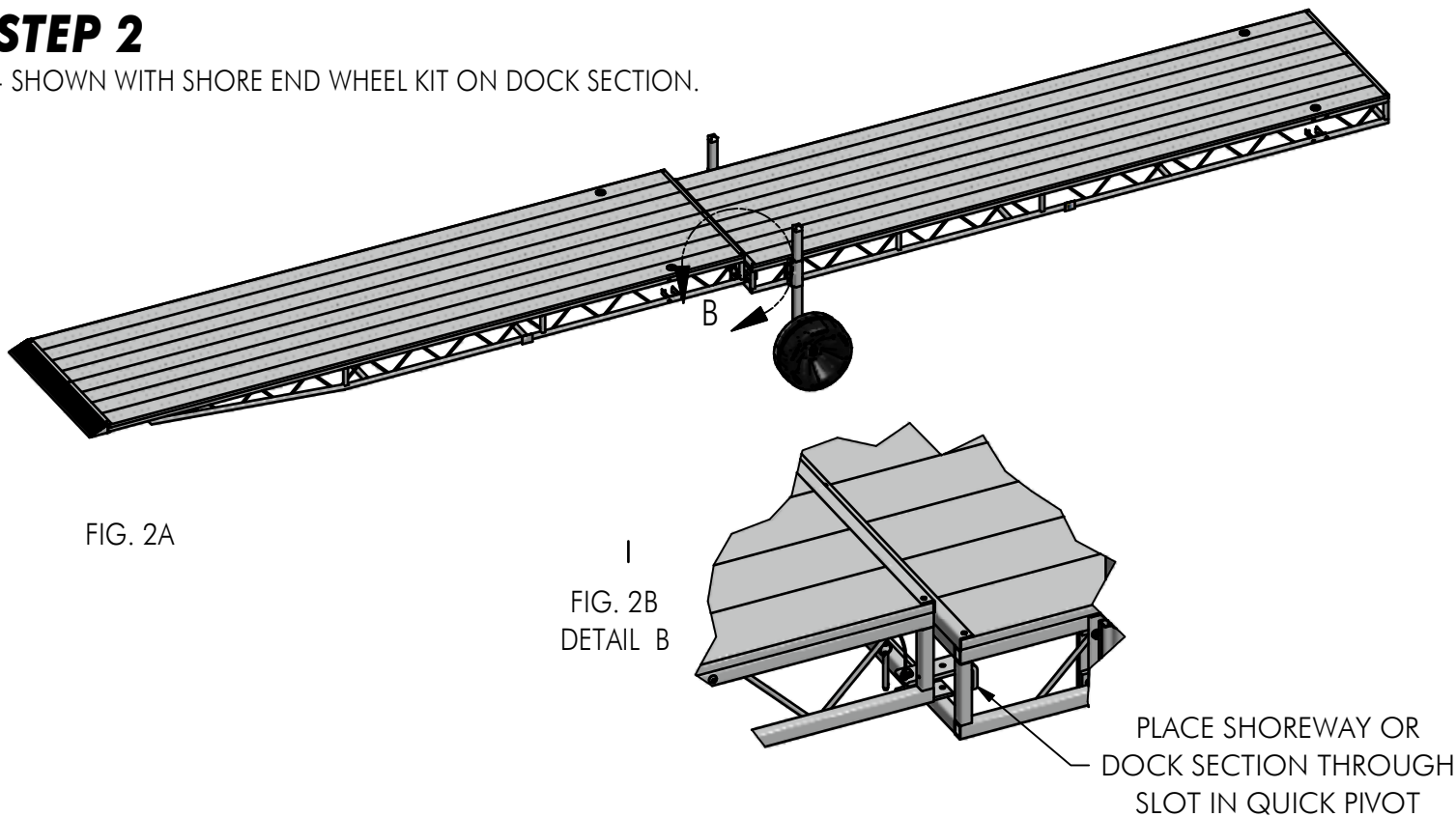
STEP 1

- INSTALL QUICK PIVOT ON THE END OF THE DOCK WITHOUT SUPPORT.
(EXAMPLE: IF THE DOCK SECTION THAT THE SHOREWAY IS CONNECTING TO HAS A WHEEL KIT ON THE END WHERE THE ATTACHING SHOREWAY IS TO BE, BOLT QUICK PIVOT TO SHOREWAY.)



STEP 2

- SHOWN WITH SHORE END WHEEL KIT ON DOCK SECTION.



STEP 3

- SHOWN WITH SHOREWAY ANGLED DOWN (FIG. 3A AND 3B.) SHOWN UP (FIG. 3C AND 3D).
- SHOWN WITH SHORE END WHEEL KIT ON DOCK SECTION, IF SUPPORTS ARE ON SHOREWAY, REVERSE QUICK PIVOT.

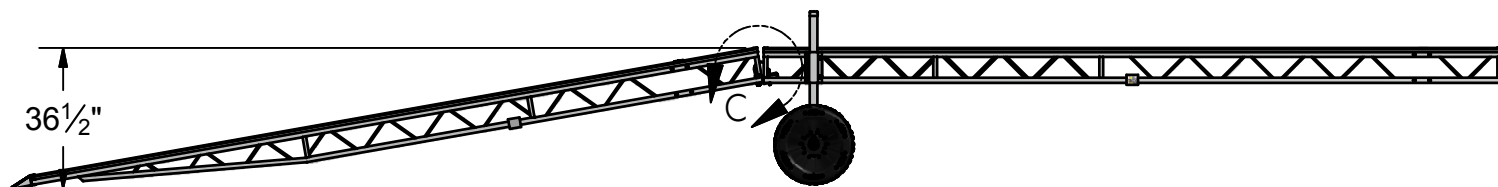
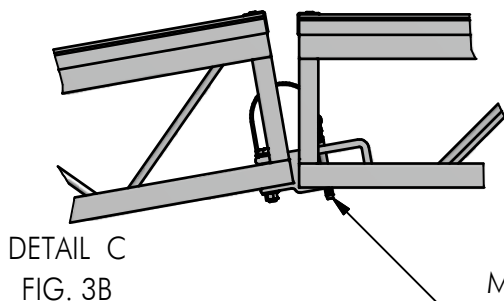


FIG. 3A



- IF SHOREWAY IS ANGLED DOWN, MAKE SURE THE END THAT IS INSERTED INTO QUICK PIVOT IS TO THE INNER PORTION OF QUICK PIVOT
- INSERT PIN INTO QUICK PIVOT

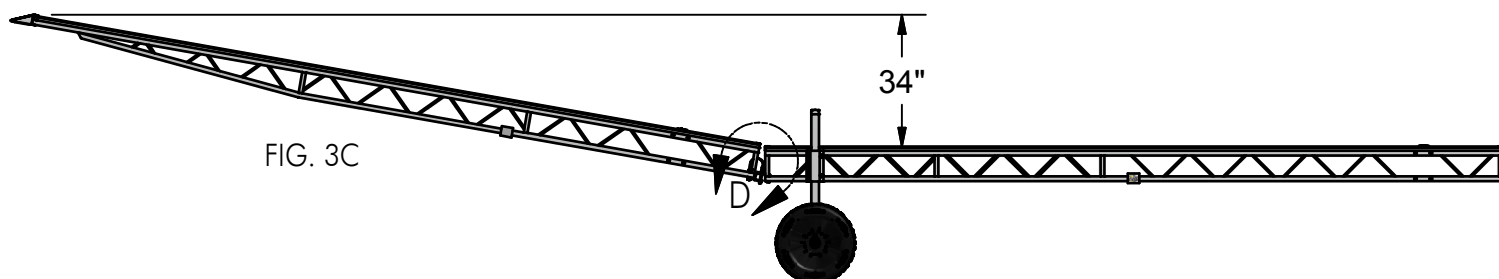
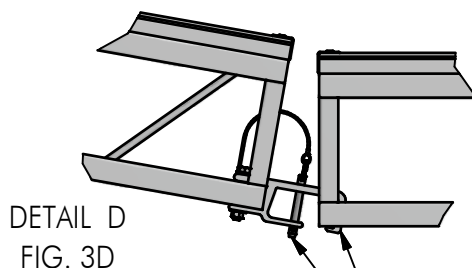


FIG. 3C



- IF SHOREWAY IS ANGLED UP, MAKE SURE THE END THAT IS INSERTED INTO QUICK PIVOT IS TO THE OUTER PORTION OF THE QUICK LOOP
- INSERT PIN INTO QUICK PIVOT



DO NOT EXCEED SAFE INCLINE OR DECLINE. FAILURE TO DO SO MAY RESULT IN PROPERTY DAMAGE, BODILY INJURY, OR EVEN DEATH OF OTHERS.