

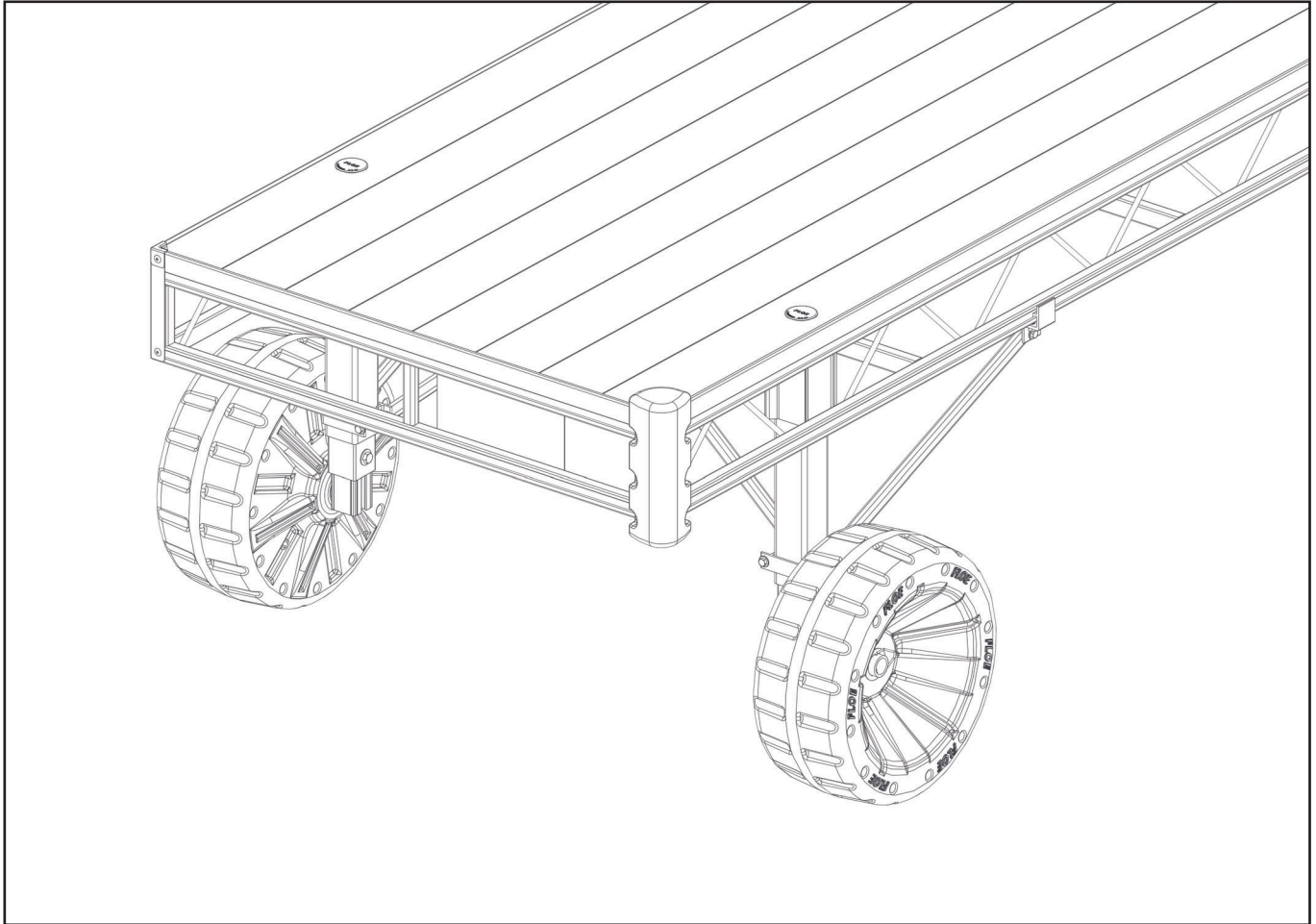


## ASSEMBLY INSTRUCTIONS

### PREMIUM CORNER BUMPER

### QUICK ATTACH ROLL-IN DOCKS

P/N 510-04101-02



For more information, go to the owner support tab on the FLOE website

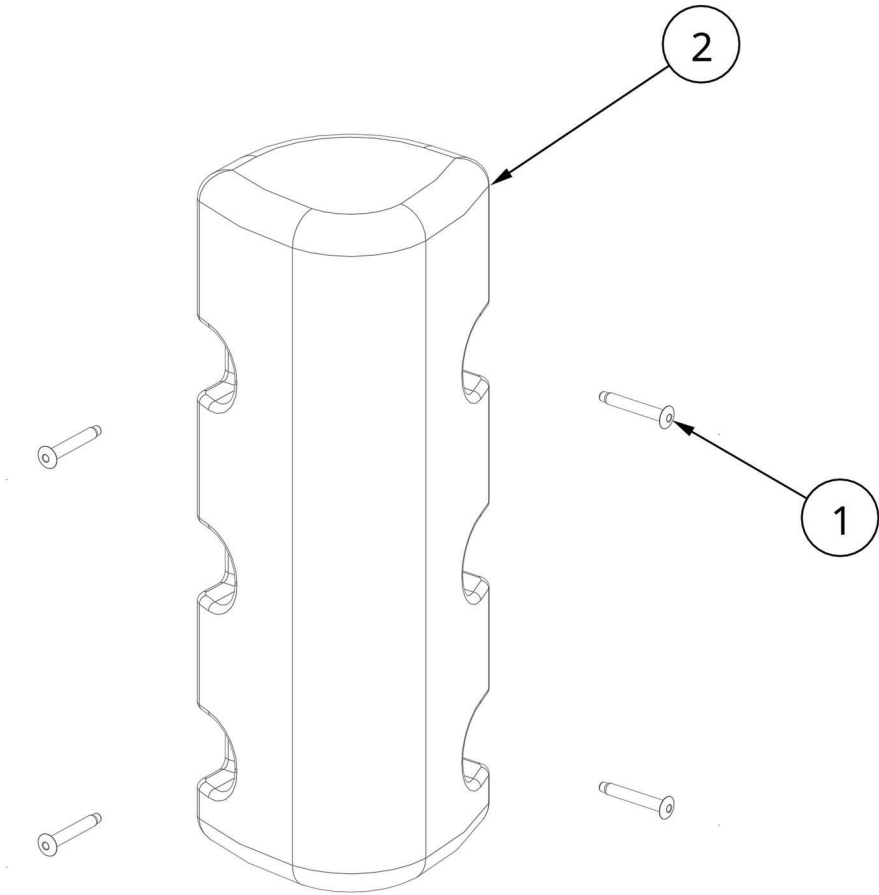
\*DOCK SECTION & WHEEL KIT NOT INCLUDED

### TOOLS REQUIRED

- CORDLESS DRILL
- #9 DRILL BIT
- RIVET TOOL

**BILL OF MATERIALS/EXPLODED VIEW**

P/N 510-04101-02	PREMIUM QA ROLL-IN CORNER BUMPER		
NUMBER	PART NUMBER	QTY.	DESCRIPTION
1	001-06500-00	4	RIVET, ABL6-16 3/16" X 1"
2	010-00501-01	1	BUMPER, TRUSS CORNER - GREY



# INSTALLATION

PLACE THE BUMPER ONTO THE CORNER OF THE DOCK. NOTE THE ORIENTATION, AS THE DIVOTS IN THE BUMPER ARE OFFSET (FIGURE 1.1). ALIGN THE BUMPER SO THAT THE DRILL GUIDES ARE ALIGNED WITH THE RECESSED PART OF THE FRAME TUBES. THERE WILL BE APPROXIMATELY A 5/16" GAP BETWEEN THE BUMPER AND THE DECK SURFACE (FIGURE 1.2).

FIGURE 1.1

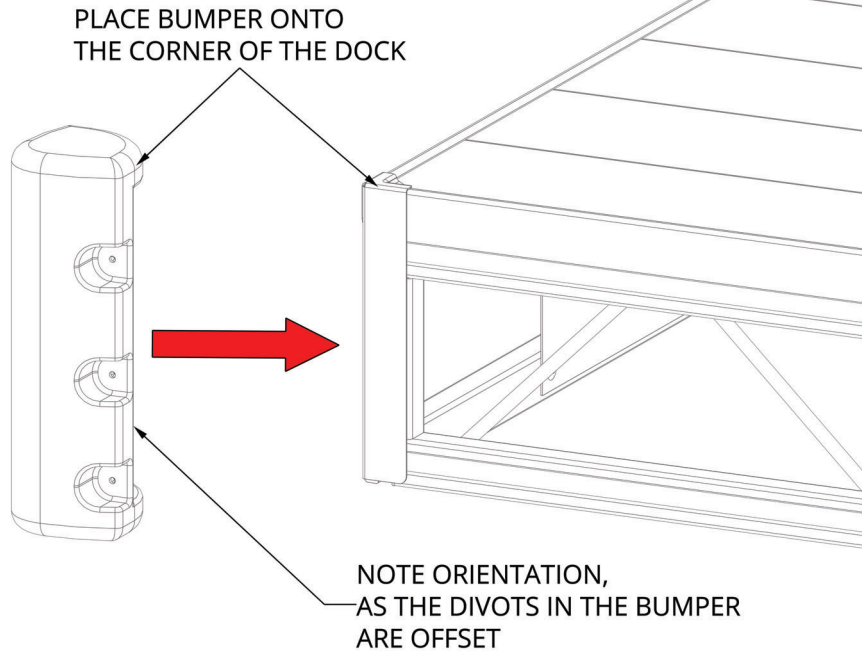
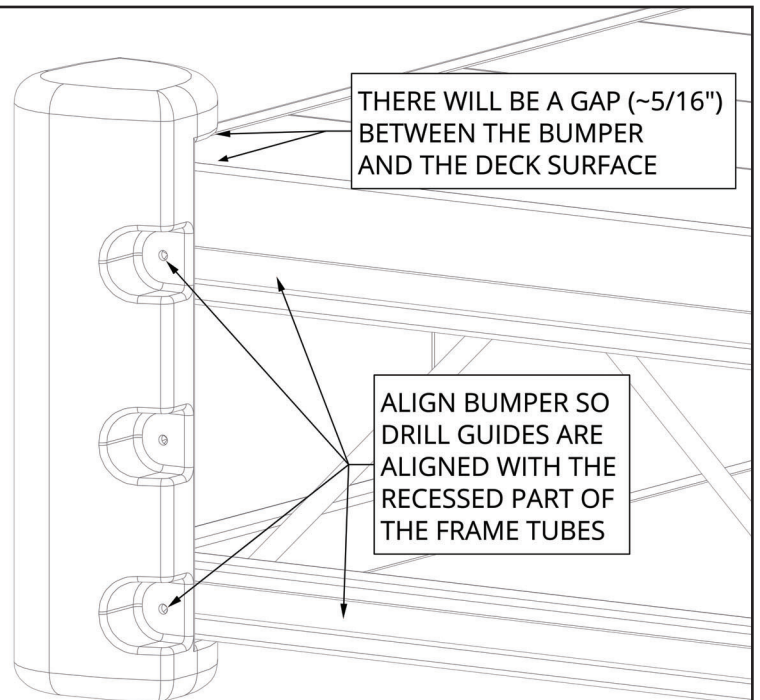
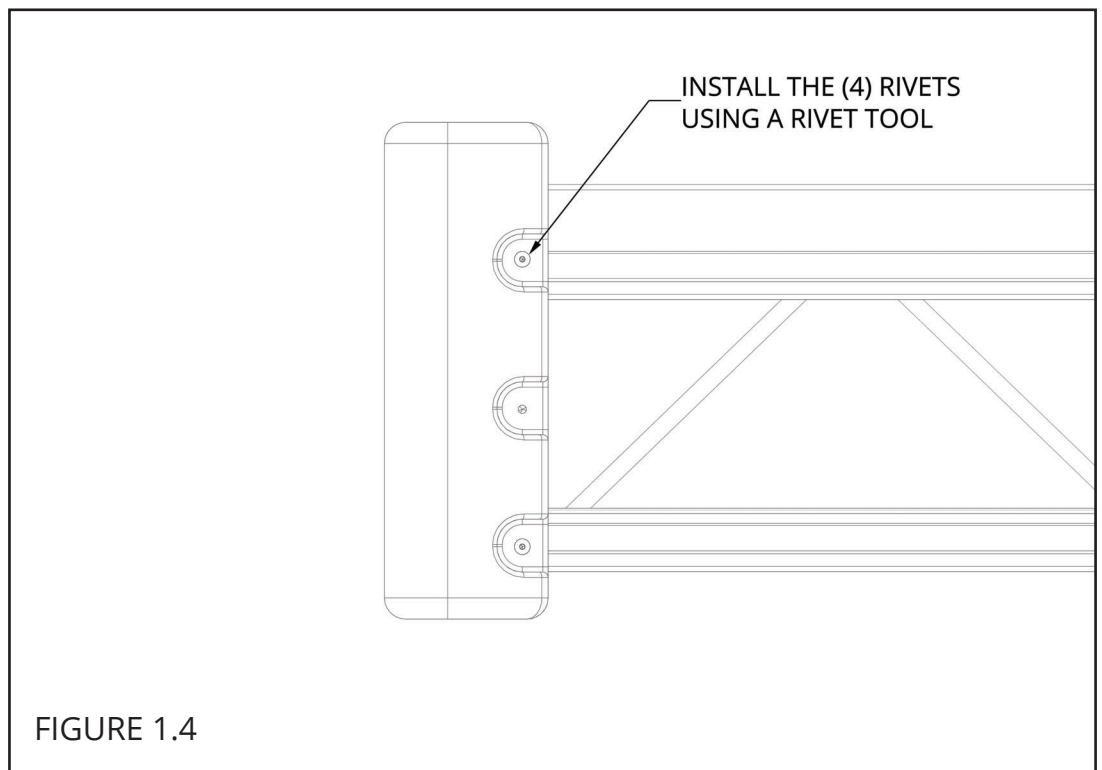
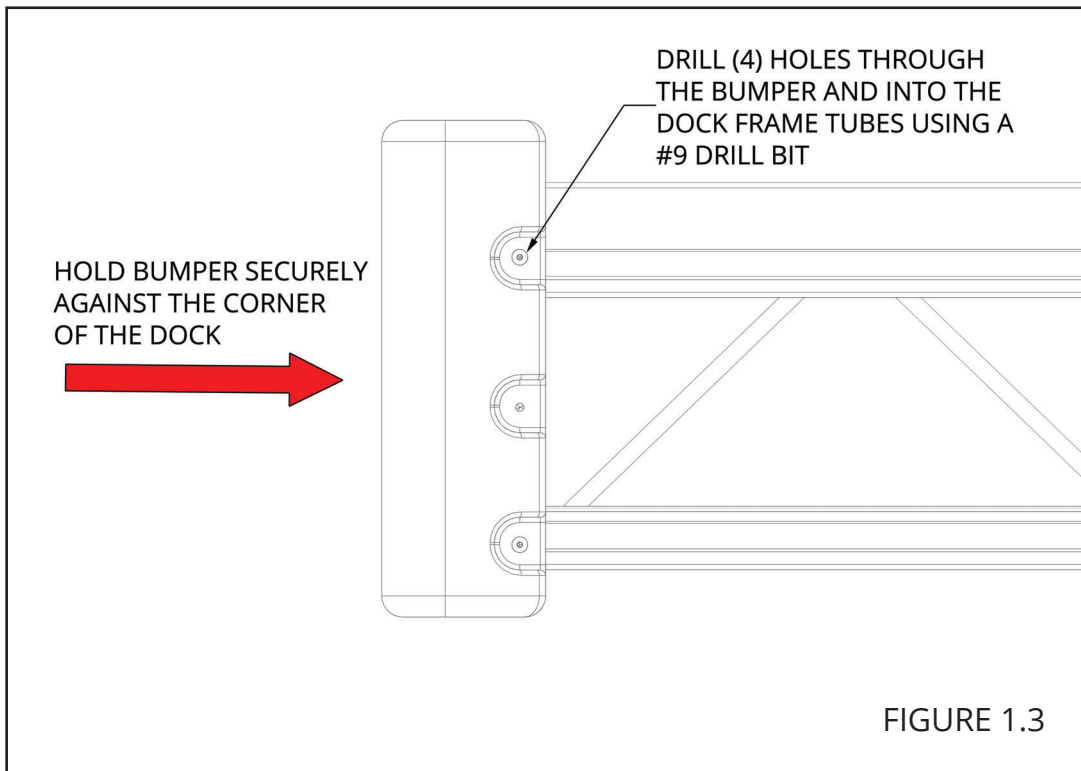


FIGURE 1.2



WHILE HOLDING THE BUMPER SECURELY TO THE CORNER OF THE DOCK, DRILL (4) HOLES THROUGH THE BUMPER AND INTO THE DOCK FRAME TUBES USING A #9 DRILL BIT (FIGURE 1.3). INSTALL (4) 3/16" X 1" RIVETS INTO THE BUMPER USING A RIVET TOOL (FIGURE 1.4).



## ***NOTES***

**NOTES**

## ***NOTES***



FLOE INTERNATIONAL, INC.  
48473 STATE HIGHWAY 65 • MCGREGOR, MN 55760  
[www.floeintl.com](http://www.floeintl.com)

*All material copyright © 2023 FLOE International, Inc.  
Specifications subject to change without notice.*