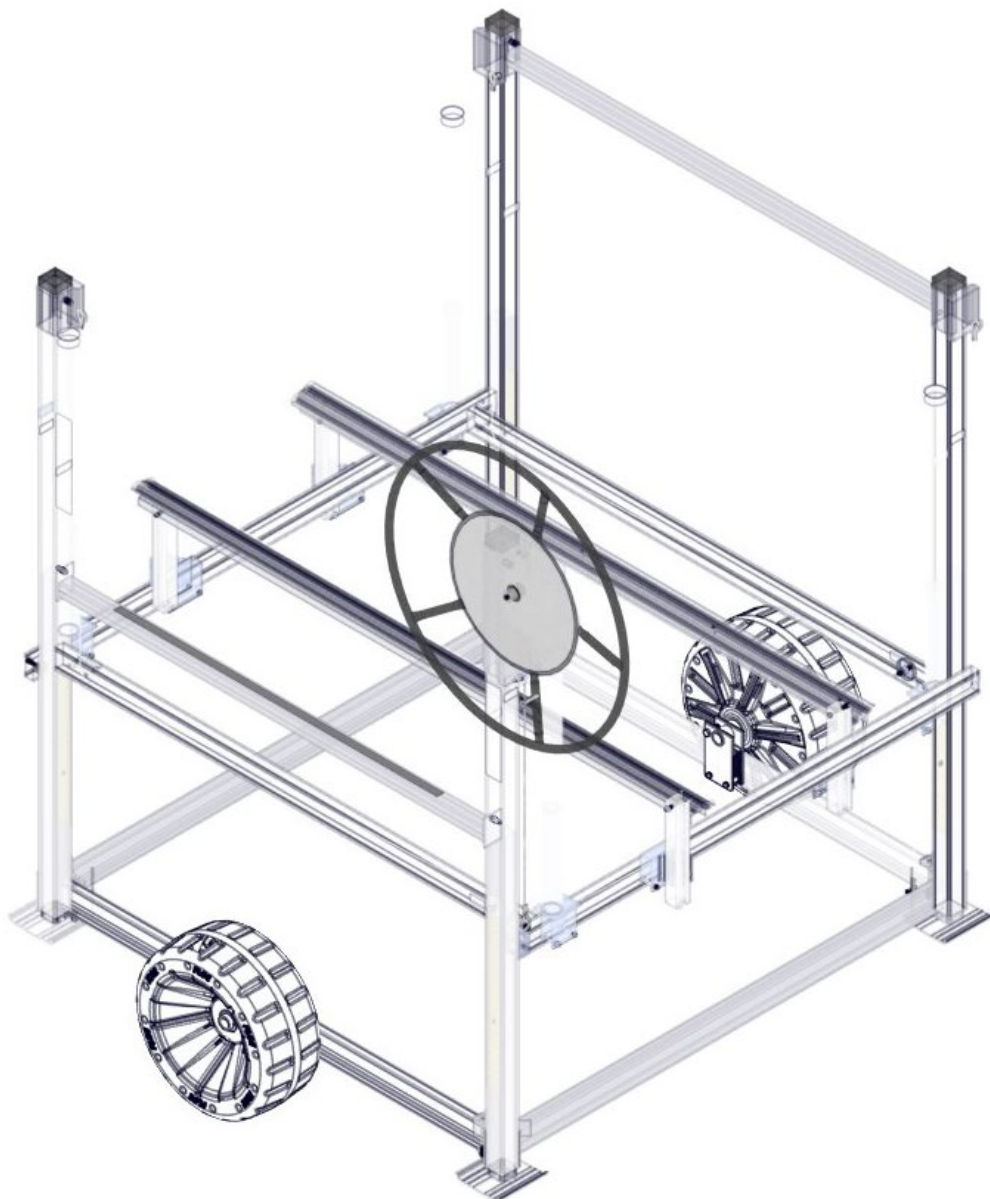


FLOE BOAT LIFT WHEEL KIT

V1600 PWC

ASSEMBLY INSTRUCTIONS

KIT P/N 511-05040-00



TOOLS REQUIRED

- (2) 9/16" SOCKETS/WRENCHES
- (2) 3/4" SOCKETS/WRENCHES
- TORQUE WRENCH
- TAPE MEASURE

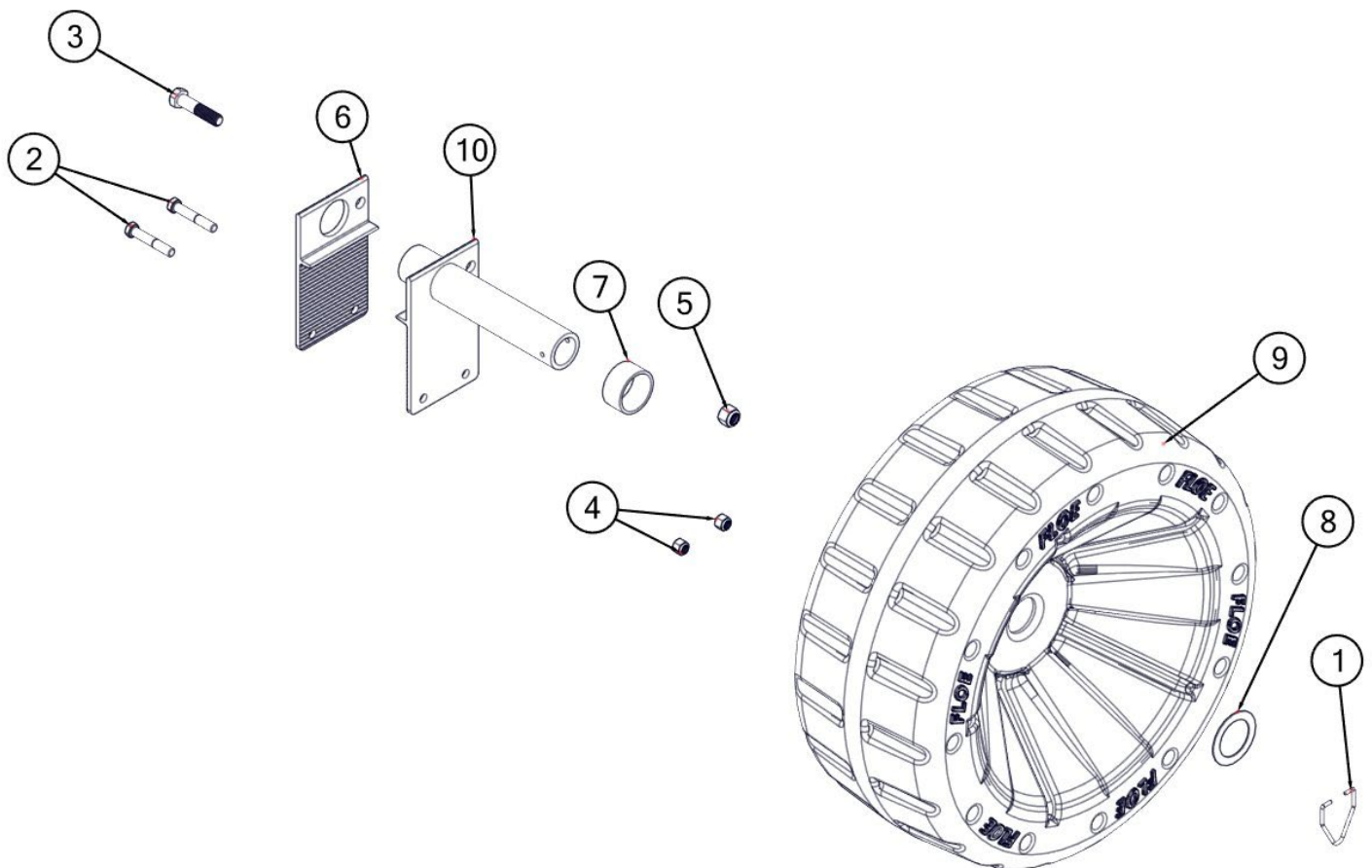
*LIFT NOT INCLUDED

IMPORTANT

WHEELS SHOULD BE DRILLED WHEN
INSTALLED ON THE V1600 PWC LIFT

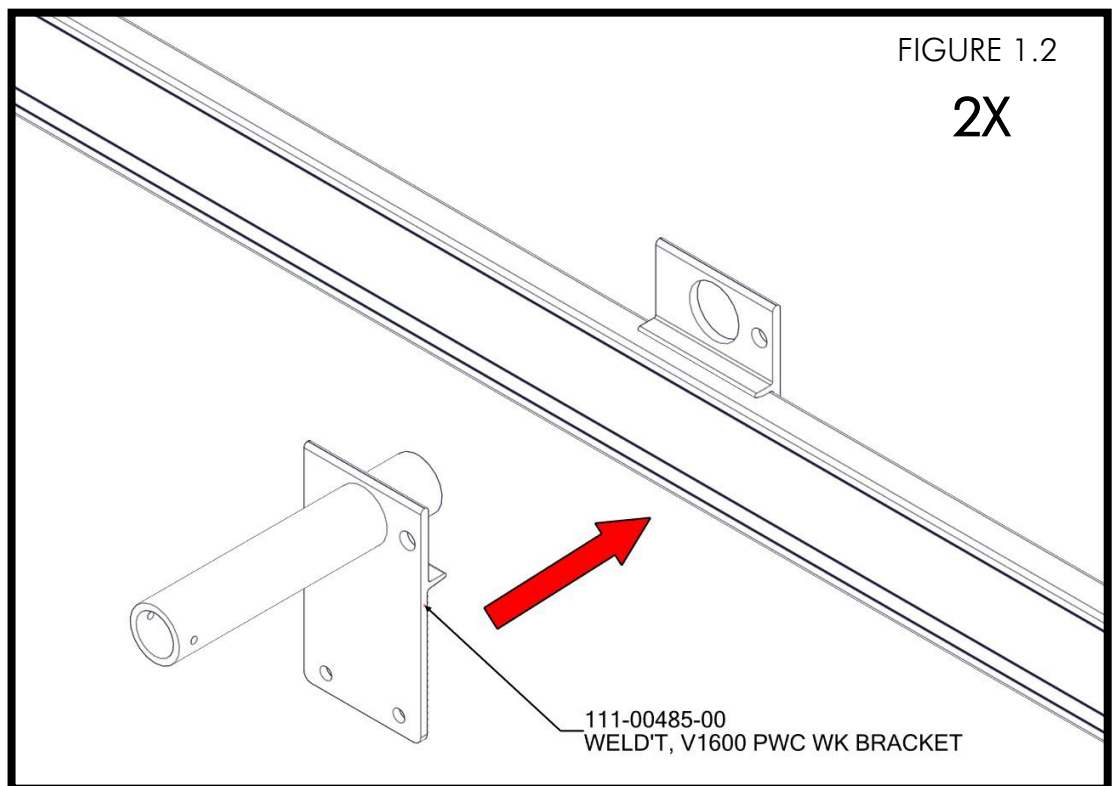
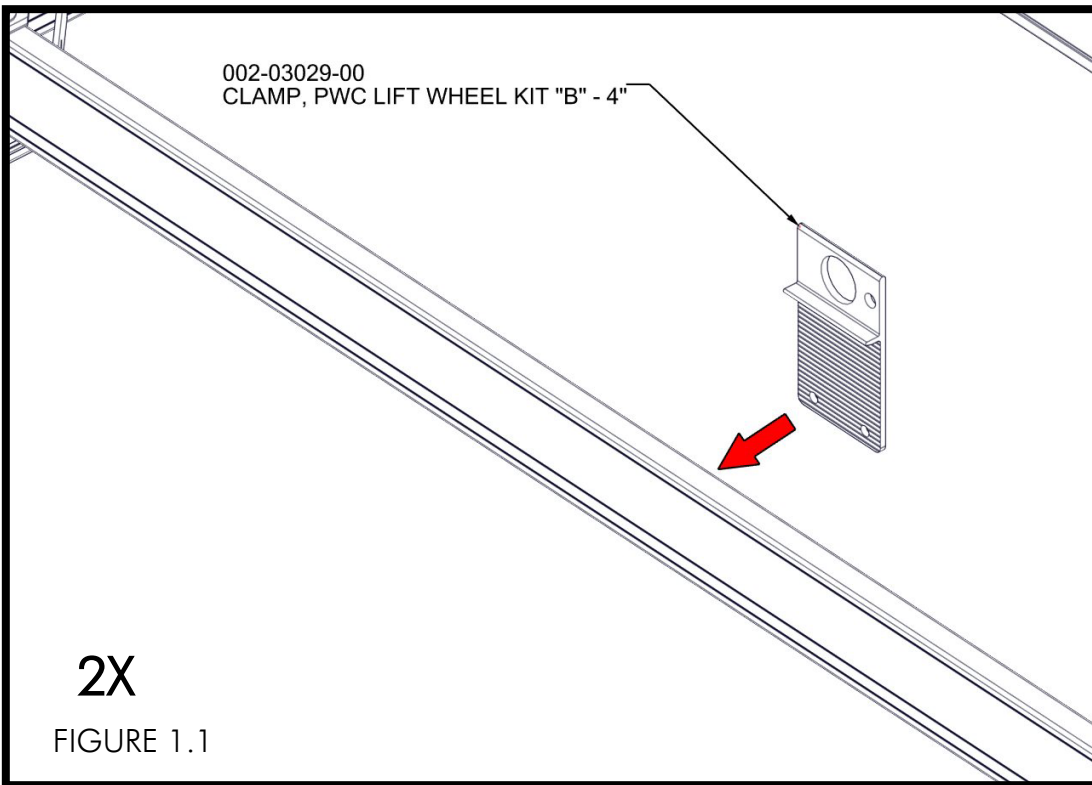
BILL OF MATERIALS/EXPLODED VIEW

P/N 511-05040-00		WHEEL KIT, V1600 PWC W/ DRILLED WHEELS		
NUMBER	PART NUMBER	QTY.	DESCRIPTION	
1	001-26728-00	2	CLIP, STAINLESS STEEL SPINDLE	
2	001-70112-00	4	HHCS, 3/8-16 x 2 1/4" 18-8 ss	
3	001-70212-00	2	HHCS, 1/2-13 x 2 1/4" 18-8 ss	
4	001-76071-00	4	NUT, NYLOCK 3/8-16 ALUM.	
5	001-76072-00	2	NUT, NYLOCK 1/2-13 ALUM.	
6	002-03029-00	2	CLAMP, PWC LIFT WHEEL KIT "B" - 4"	
7	007-00004-00	2	SPACER, PVC - 1"	
8	010-00020-00	2	WASHER, 2.5" O.D. x 1.75" I.D.	
9	010-06001-00	2	WHEEL, PLASTIC (DRILLED)	
10	111-00485-00	2	WELD'T, V1600 PWC WK BRACKET	



STEP 1

PLACE CLAMP ONTO SIDE FRAME BEAMS BETWEEN CORNER POSTS "A" & "B" AND CORNER POSTS "C" & "D" (FIGURE 1.1). SLIDE WELDMENT INTO CLAMP AND ONTO FRAME BEAM (FIGURE 1.2).



POSITION CLAMPS 29 7/8" FROM THE CORNER POST (FIGURE 1.3). ATTACH CLAMPS TOGETHER USING (1) 1/2" X 2 1/4" BOLT, (2) 3/8" X 2 1/4" BOLTS (FIGURE 1.4), (1) 1/2" NYLOCK NUT, AND (2) 3/8" NYLOCK NUTS (FIGURE 1.5).

FIGURE 1.3

2X

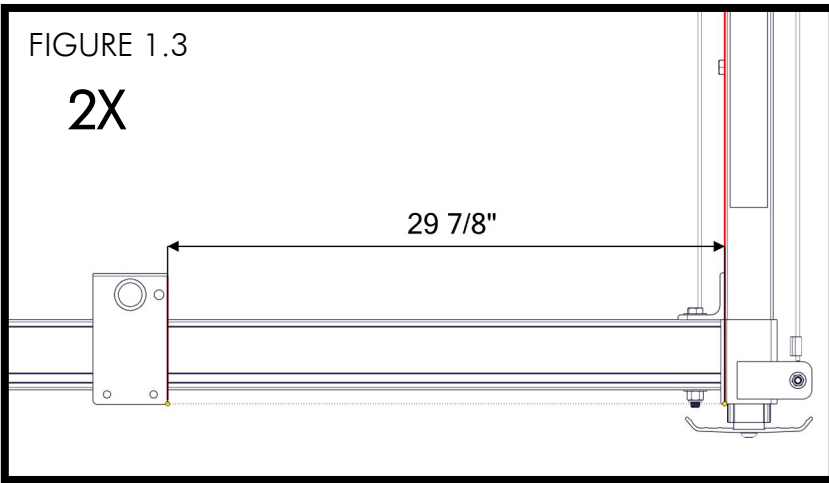


FIGURE 1.4

2X

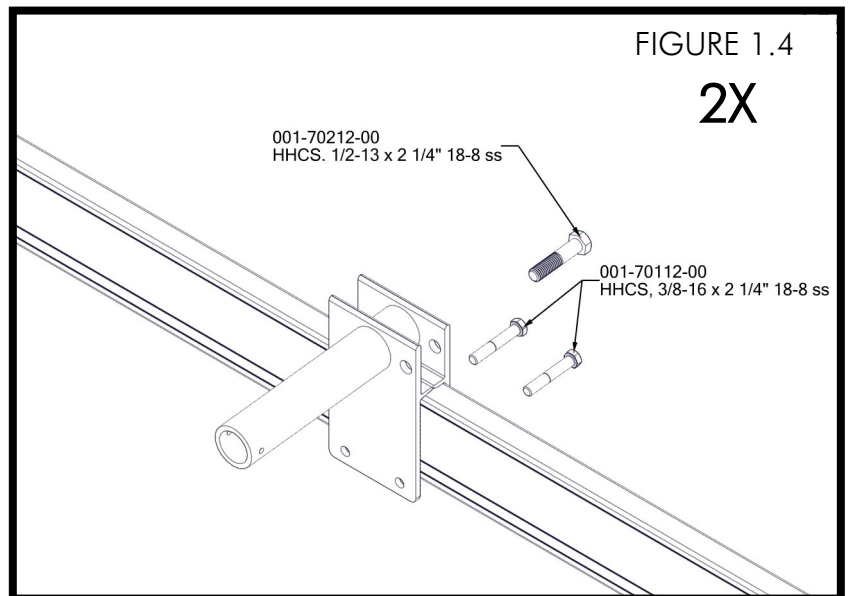
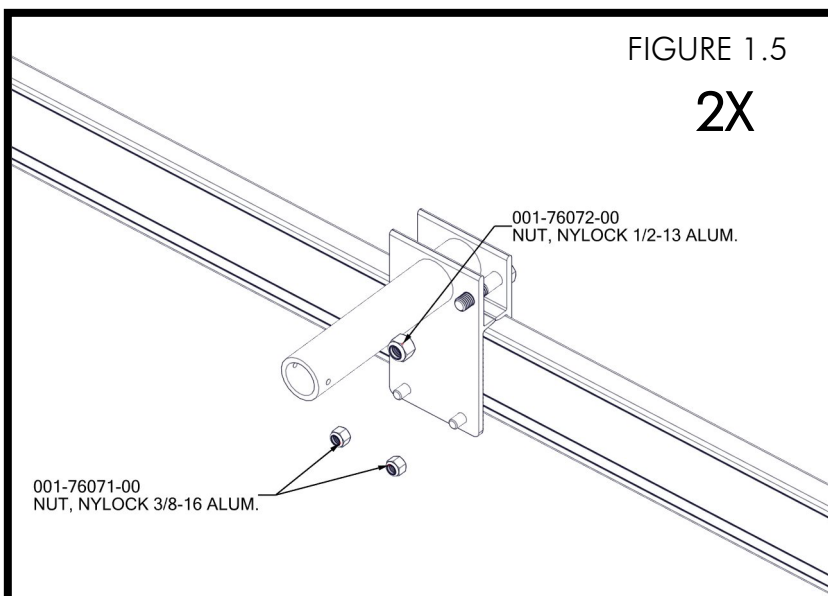
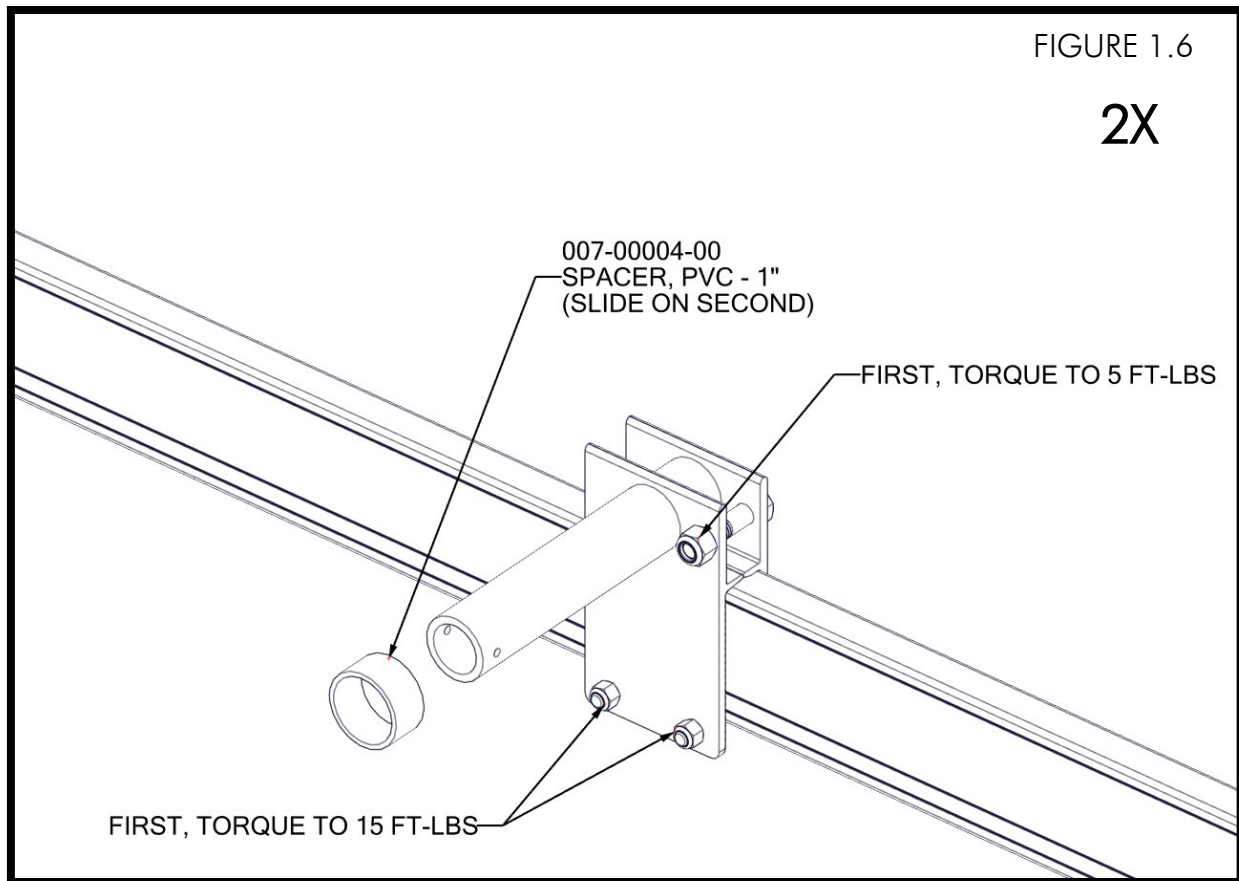


FIGURE 1.5

2X

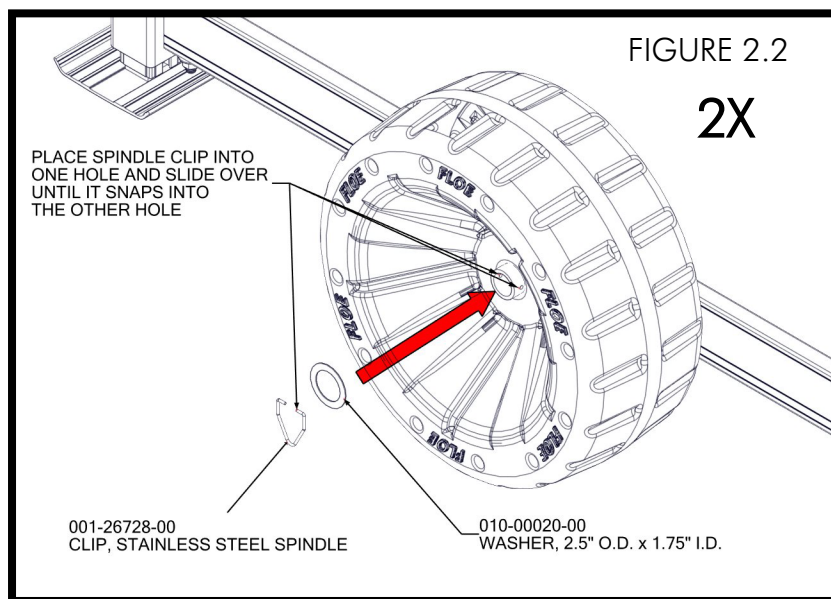
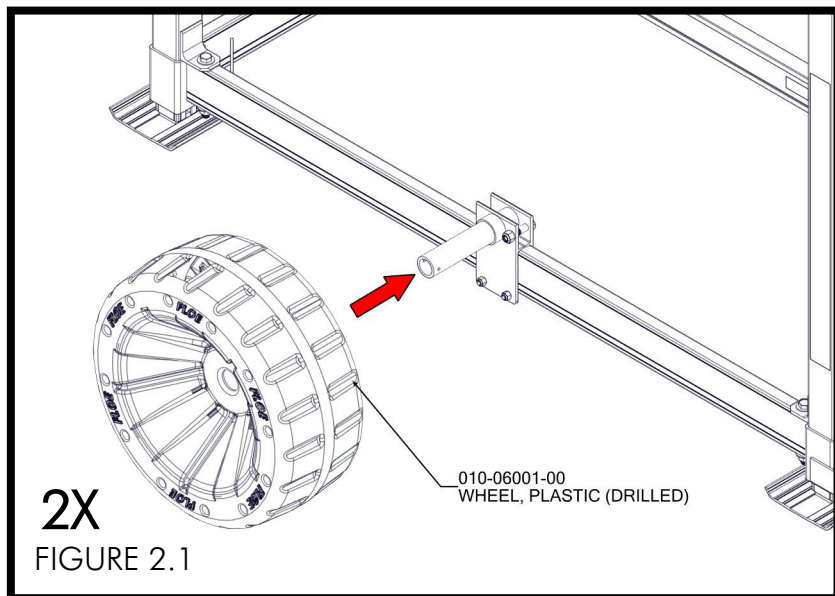


TORQUE 1/2" NUT TO 5 FT-LBS AND 3/8" NUTS TO 15 FT-LBS FIRST, THEN SLIDE SPACER ONTO SPINDLE (FIGURE 1.6)



STEP 2

SLIDE WHEEL ONTO SPINDLE (FIGURE 2.1), THEN WASHER OVER SPINDLE (FIGURE 2.2). PLACE SPINDLE CLIP INTO ONE HOLE ON SPINDLE, THEN SLIDE OVER UNTIL IT SNAPS INTO THE OTHER HOLE (FIGURE 2.2).



IMPORTANT

IT IS IMPORTANT THAT THE LIFT CRADLE IS RAISED AT LEAST 2 FEET (24") WHEN TRANSPORTING THE LIFT IN OR OUT OF THE WATER. THIS WILL PREVENT WHEELS FROM HITTING THE SIDE CRADLE BEAMS, WHICH WOULD PREVENT THE WHEELS FROM TURNING FREELY (FIGURE 2.3).

