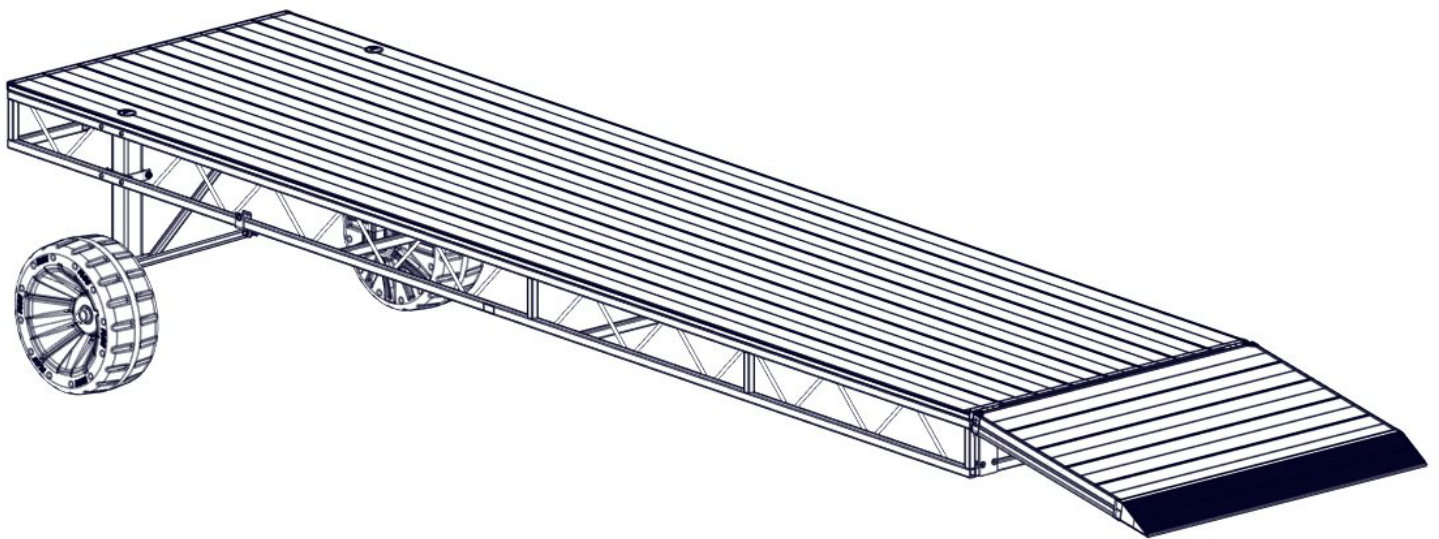


# FLOE STANDARD ROLL-IN SHORE END TRANSITION MOUNT ASSEMBLY INSTRUCTIONS

KIT P/N 510-02343-00 4' & 5' WIDE  
510-02348-00 6' WIDE



TOOLS REQUIRED  
-7/32" HEX BIT  
-9/16" SOCKET/WRENCH  
-TORQUE WRENCH

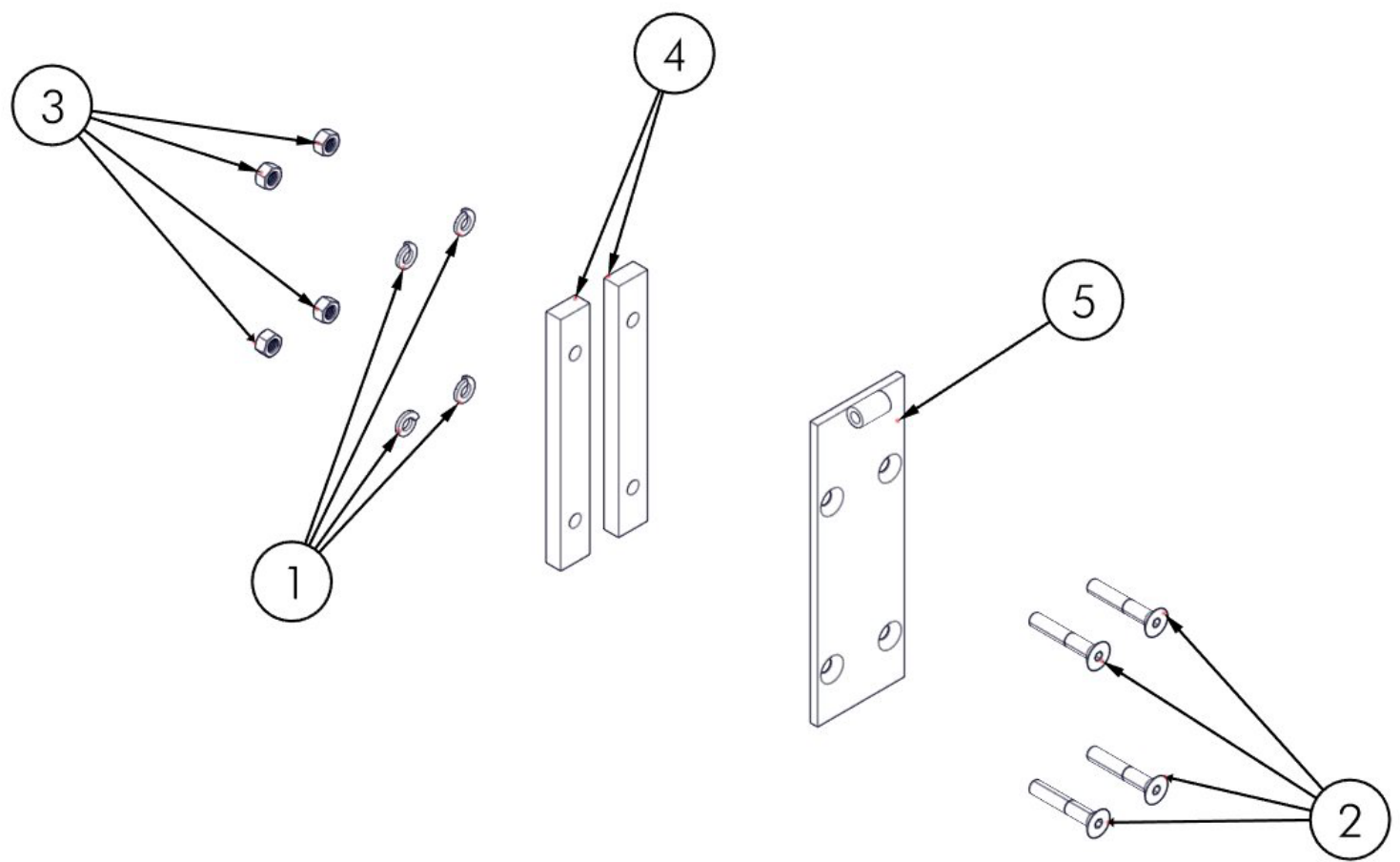
\*DOCK, LEGS, AND SHORE END TRANSITION NOT INCLUDED

INSTRUCTION P/N: 610-02343-00  
RELEASED 12/6/22

© Manufactured by:  
Floe International Inc.  
48473 State Hwy. 65  
McGregor, MN 55760  
[www.floeintl.com](http://www.floeintl.com)

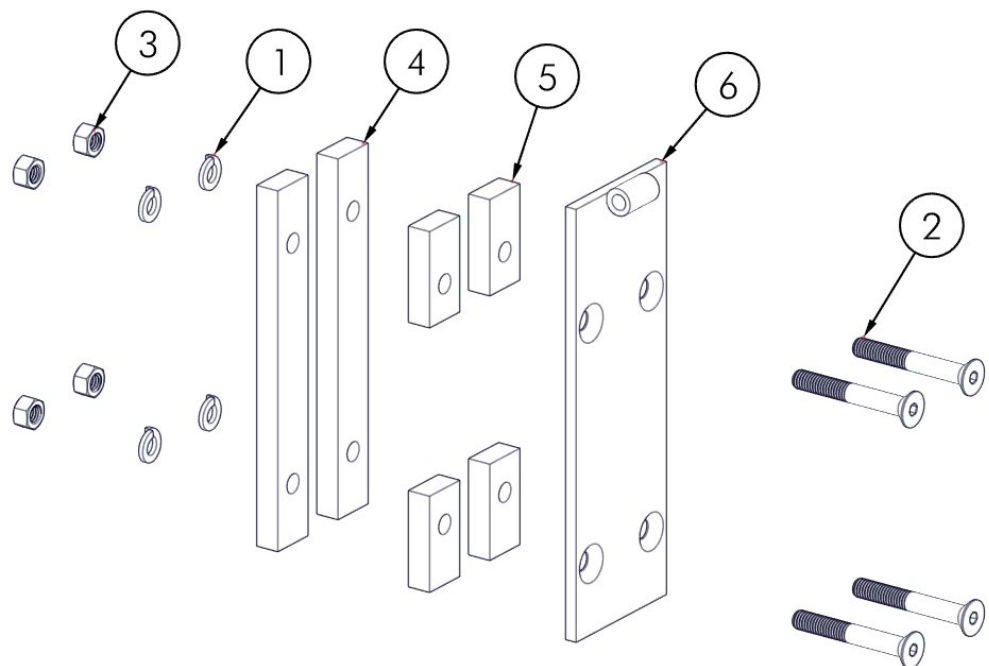
**BILL OF MATERIALS/EXPLODED VIEW**

P/N 510-02343-00	KIT, SE TRANSITION ROLL IN MNT		
NUMBER	PART NUMBER	QTY.	DESCRIPTION
1	001-71067-00	8	LOCK WASHER, 3/8" S/W SS 18-8
2	001-73936-00	8	FHCS, 3/8-16 X 2-1/4" 18-8 SS
3	001-76349-00	8	NUT, 3/8-16 ALUM.
4	002-02203-00	4	PLATE, DOCK ACCESSORY
5	110-00315-00	2	WELD'T, STD ROLL IN SE TRANSITION PIVOTING BRACKET



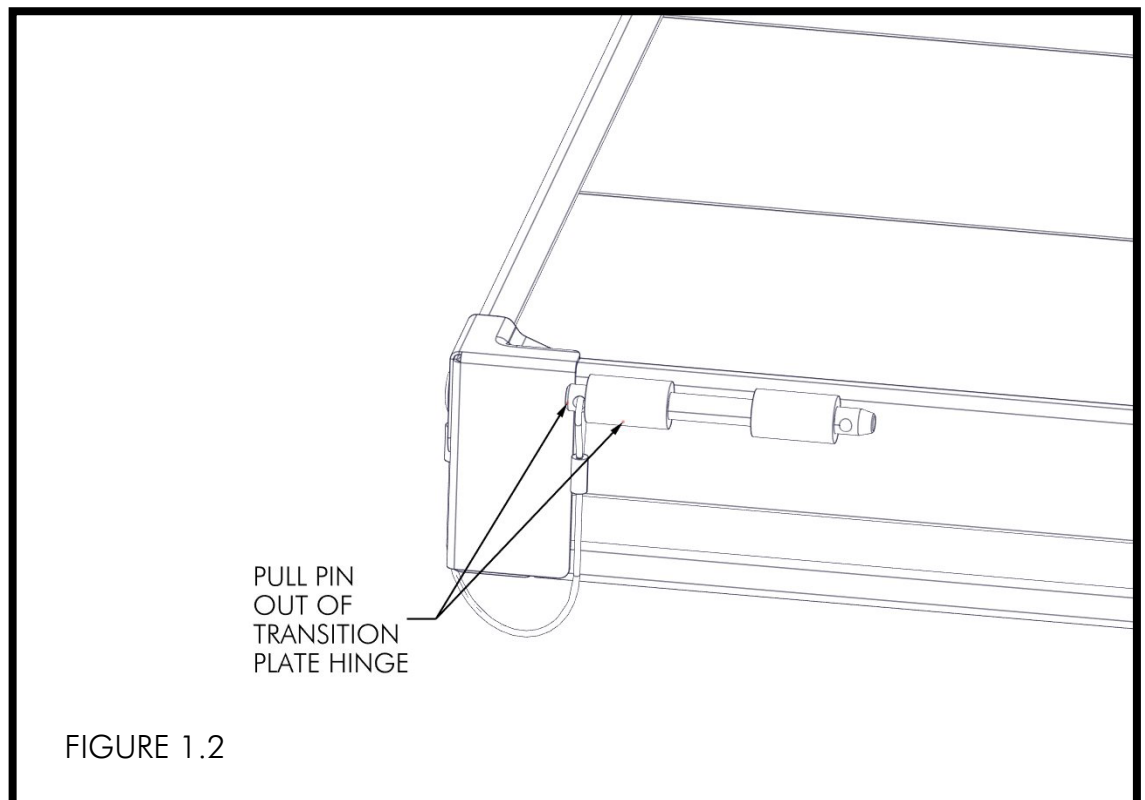
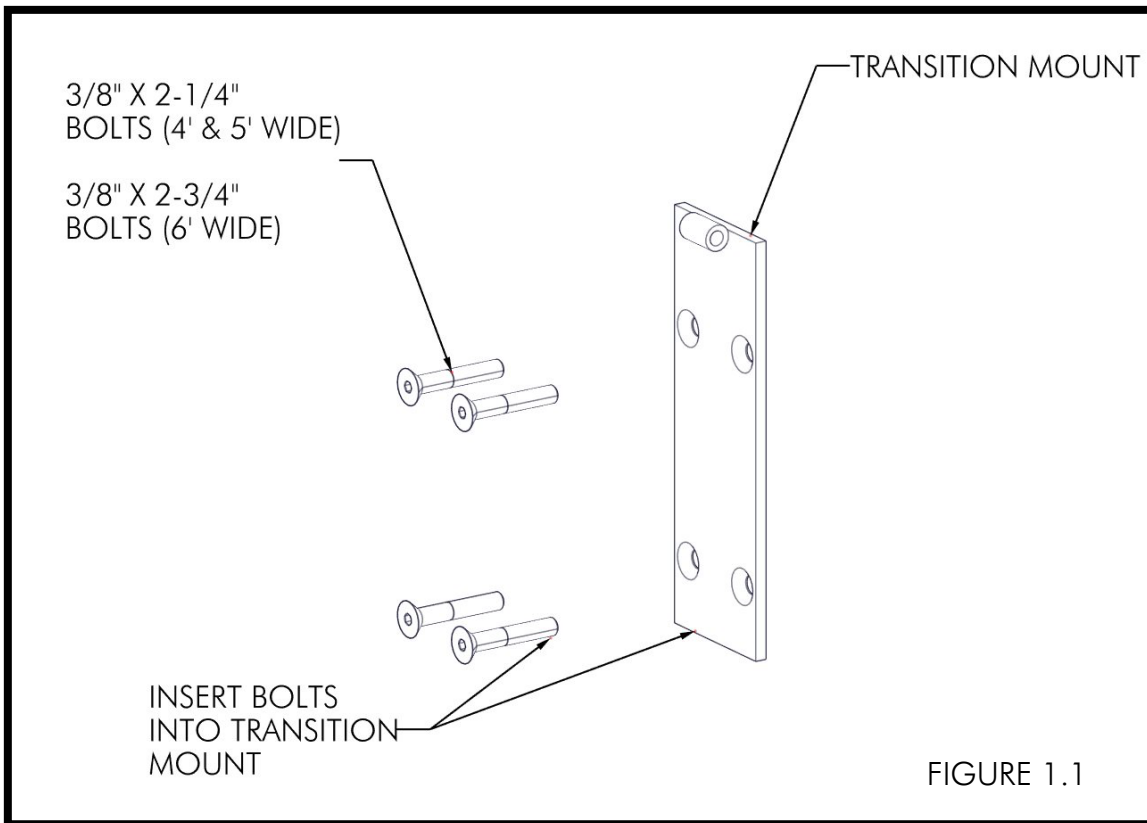
**BILL OF MATERIALS/EXPLODED VIEW**

P/N 510-02348-00	KIT, SE TRANSITION STD. ROLL-IN 6' WIDE		
<u>NUMBER</u>	<u>PART NUMBER</u>	<u>QTY.</u>	<u>DESCRIPTION</u>
1	001-71067-00	12	LOCK WASHER, 3/8" S/W SS 18-8
2	001-73938-00	12	FHCS, 3/8-16 X 2-3/4" 18-8 SS
3	001-76349-00	12	NUT, 3/8-16 ALUM.
4	002-02203-00	6	PLATE, DOCK ACCESSORY
5	002-02204-00	4	SPACER, DOCK ACCESSORY
6	110-00315-00	3	WELD'T, STD ROLL IN SE TRANSITION PIVOTING BRACKET

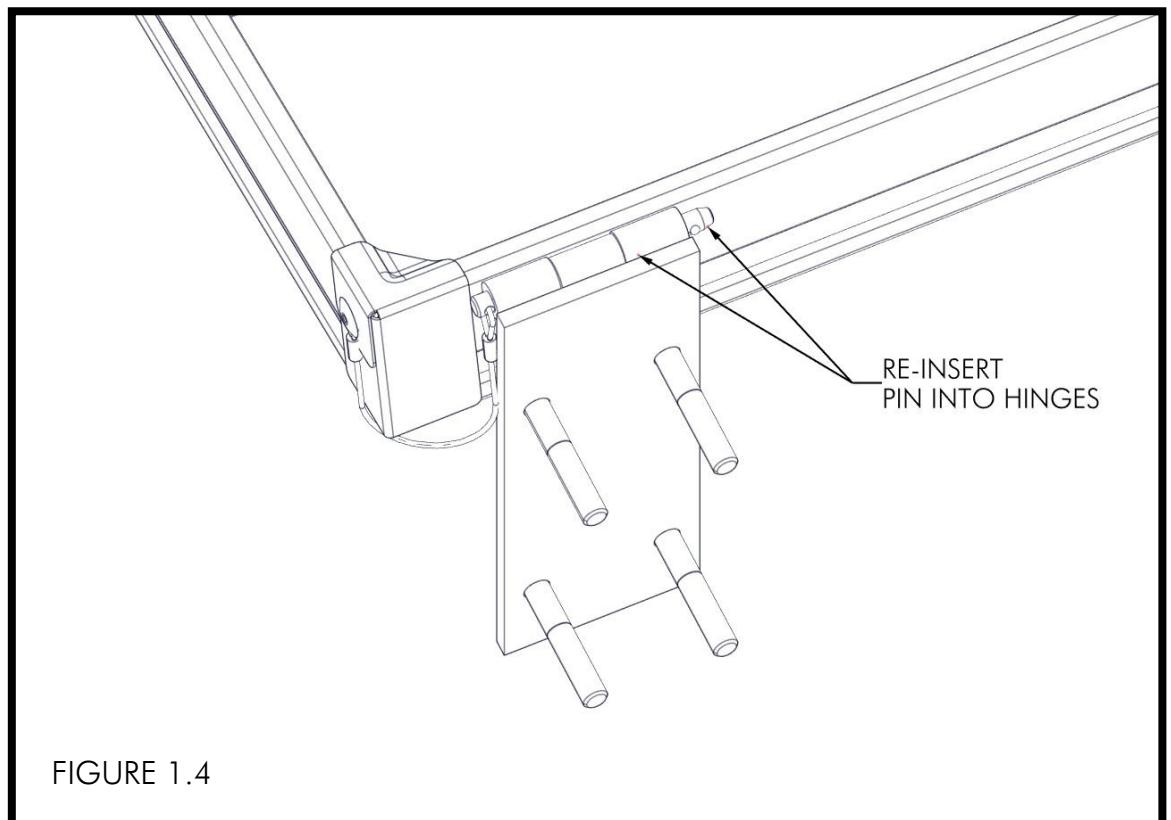
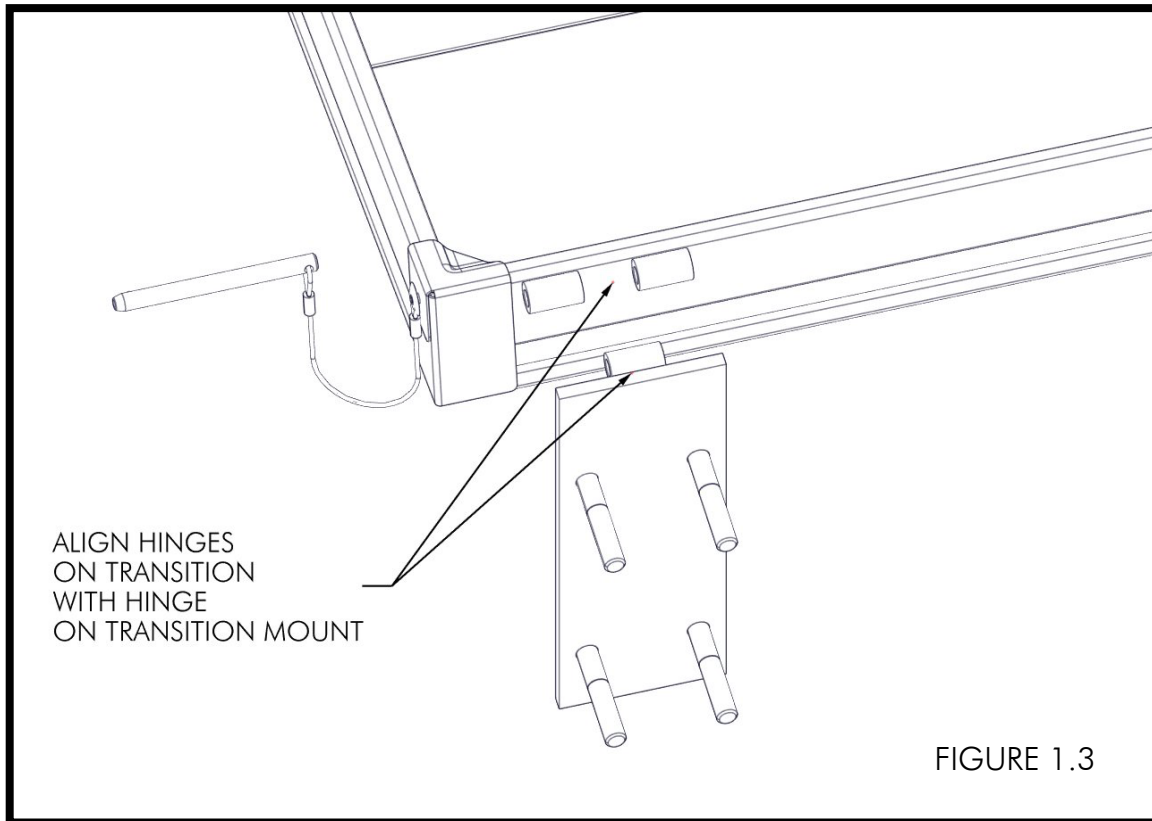


## ASSEMBLY (4' WIDE SHOWN)

INSERT (4) 3/8" X 2-1/4" BOLTS INTO EACH TRANSITION MOUNT. FOR 6' WIDE TRANSITIONS, USE (4) 3/8" X 2-3/4" BOLTS (FIGURE 1.1). REMOVE THE PINS OUT OF THE HINGES ON THE TRANSITION (FIGURE 1.2).



ALIGN THE HINGES ON THE TRANSITION WITH HINGE ON THE TRANSITION MOUNT (FIGURE 1.3).  
RE-INSERT THE PINS ON THE TRANSITION INTO THE HINGES ON THE TRANSITION AND HINGES ON  
THE TRANSITION MOUNT (FIGURE 1.4).



POSITION THE TRANSITION ONTO THE END OF THE DOCK WHILE ENSURING THAT THE SIDE OF THE TRANSITION IS FLUSH WITH THE SIDE OF THE DOCK (FIGURE 1.5). ATTACH THE TRANSITION MOUNTS TO THE DOCK END USING (2) DOCK PLATES, (4) 3/8" LOCK WASHERS, AND (4) 3/8" NUTS PER MOUNT (FIGURE 1.6).

FIGURE 1.5

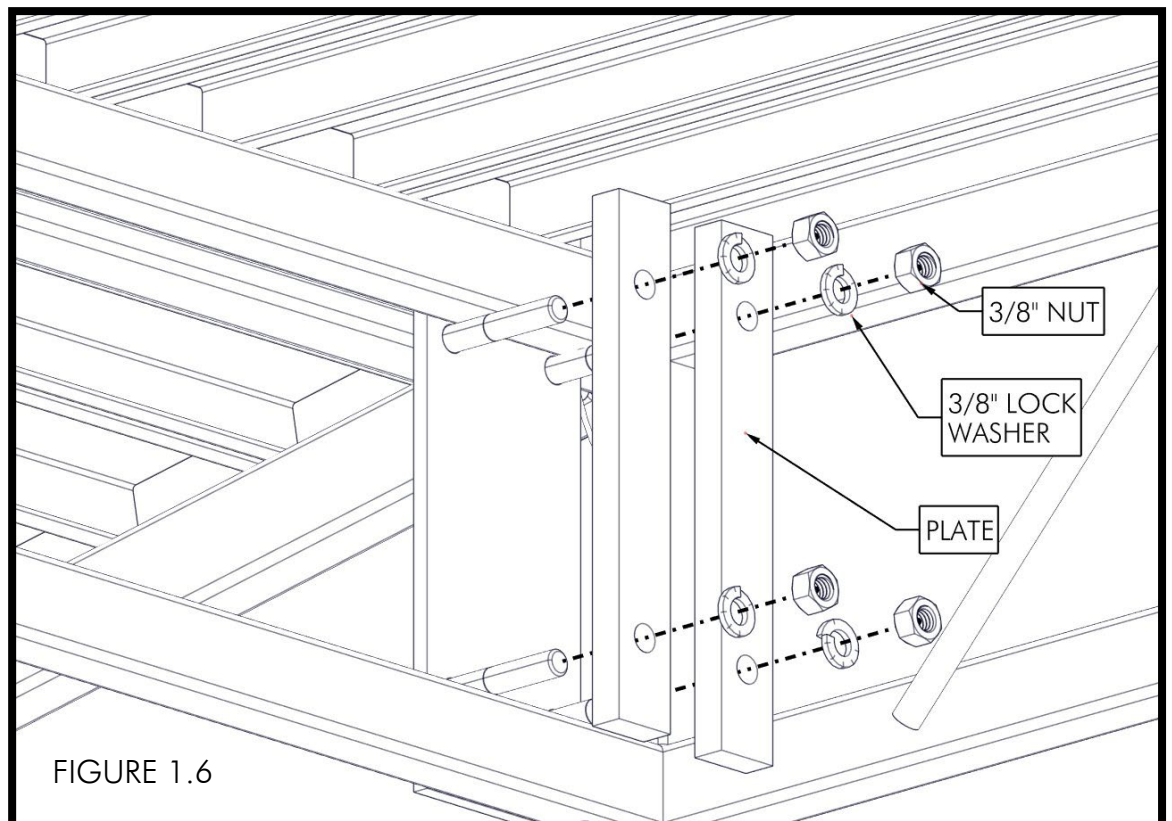
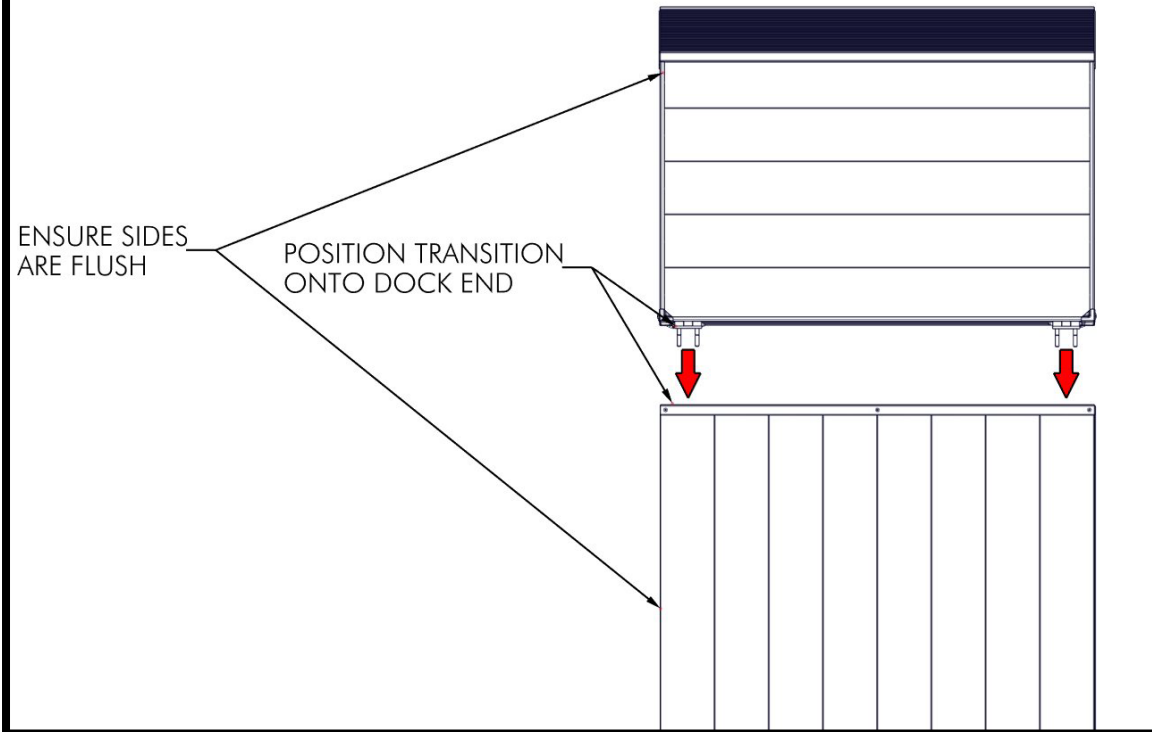
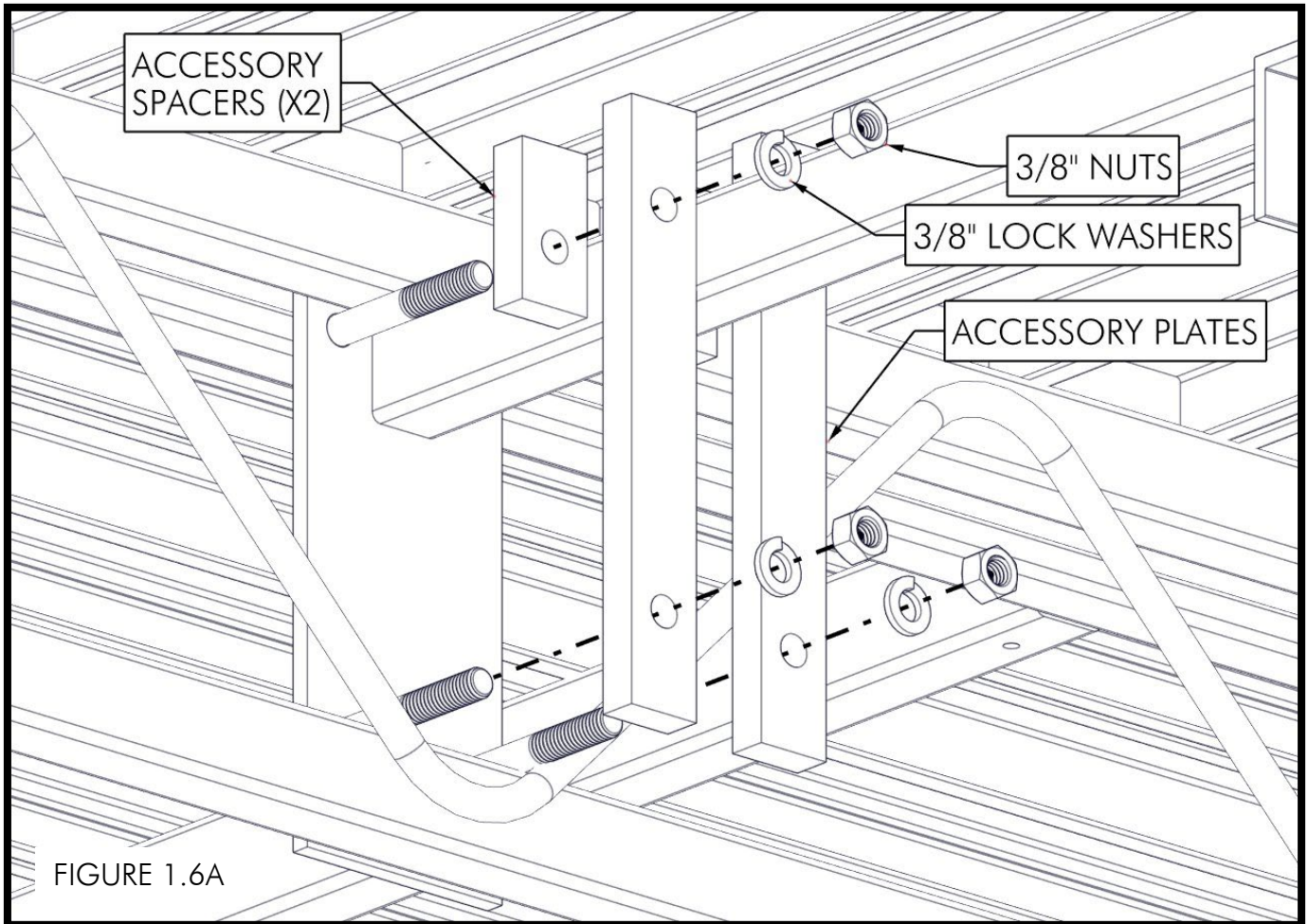


FIGURE 1.6

FOR 6' WIDE TRANSITIONS, ATTACH THE CENTER TRANSITION MOUNT TO THE DOCK END USING (2) ACCESSORY SPACERS (FOR THE UPPER BOLTS), (2) ACCESSORY PLATES, (4) 3/8" LOCK WASHERS, AND (4) 3/8" NUTS PER MOUNT. NOTE: (4) SPACERS ARE INCLUDED IN CASE IF THE WEBBING OR WELDS INTERFERE WITH INSTALLING THE HARDWARE (FIGURE 1.6A).



TORQUE NUTS TO 25 FT-LB (FIGURE 1.7).

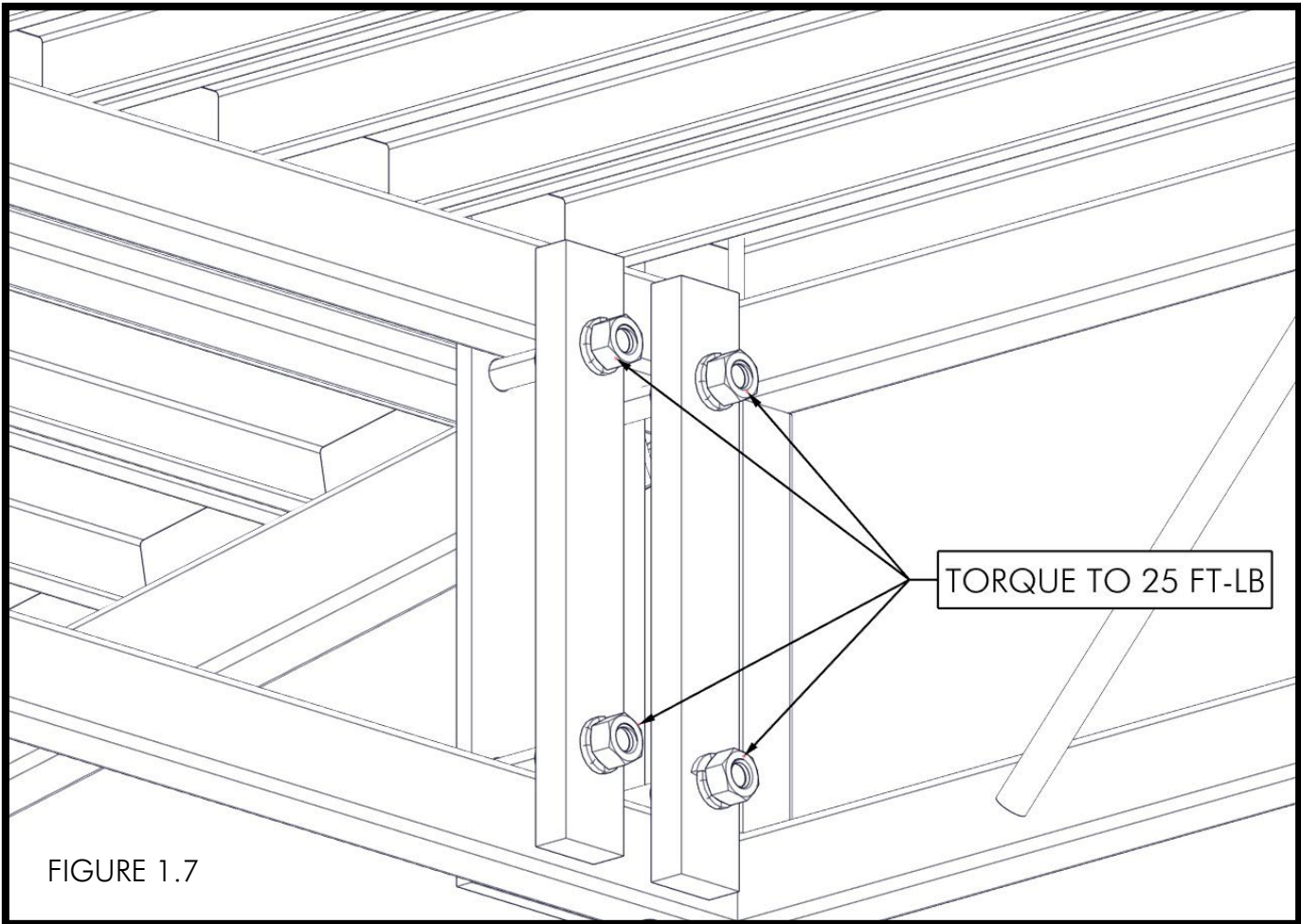


FIGURE 1.7