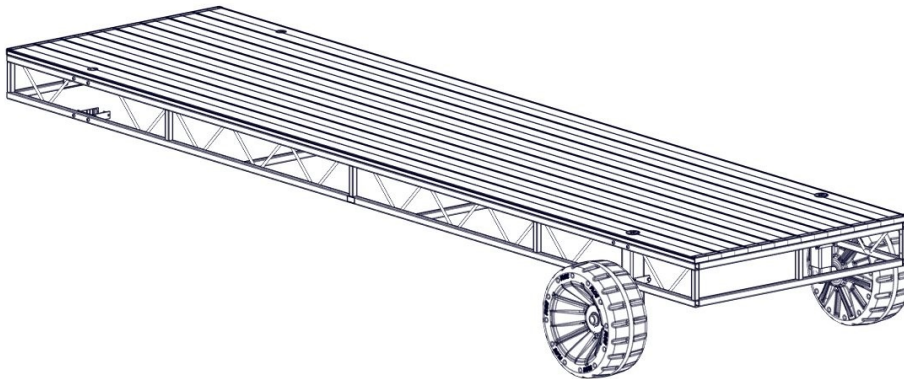


FLOE ROLL IN X-SHALLOW WHEEL KIT

ASSEMBLY INSTRUCTIONS AND OWNERS MANUAL

4', 5', 6' & 8' WIDE DOCK SECTIONS

KIT P/N 510-17100-00



*DOCK NOT INCLUDED

NOTE:

FOR USE IN UP TO
APPROXIMATELY 13" OF
WATER.

WE RECOMMEND THAT THE
LOWER DOCK FRAME IS A
MINIMUM OF 8" ABOVE THE
WATER WHEN PROPERLY
ADJUSTED. HOWEVER, IF YOU
HAVE HIGH WAVE
CONDITIONS THAT
COMMONLY EXCEED 15", WE
RECOMMEND THAT YOU RAISE
YOUR DOCK ACCORDINGLY.

TOOLS REQUIRED

- (2) 9/16" SOCKETS/WRENCHES
- CORDLESS DRILL WITH SOCKET
ADAPTER & 1-1/8" SOCKET OR
FLOE SPEED WRENCH
- TORQUE WRENCH
- TAPE MEASURE
- LEVEL
- BLOCKING MATERIAL



WARNING

NEVER ADJUST YOUR DOCK LEGS WITH
AN IMPACT WRENCH. NEVER ADJUST
YOUR DOCK LEGS WITH MORE THAN 15
FT-LBS OF FORCE. APPLYING TOO MUCH
FORCE TO YOUR DOCK LEGS WILL
DAMAGE THE MECHANISM.

**DOCK OWNERS MANUAL IS LOCATED ONLINE AT
FLOEINTL.COM/MANUALS-AND-INFORMATION**

LEG ADJUSTMENT

NOTE:

FOR USE IN UP TO APPROXIMATELY 13" OF WATER.

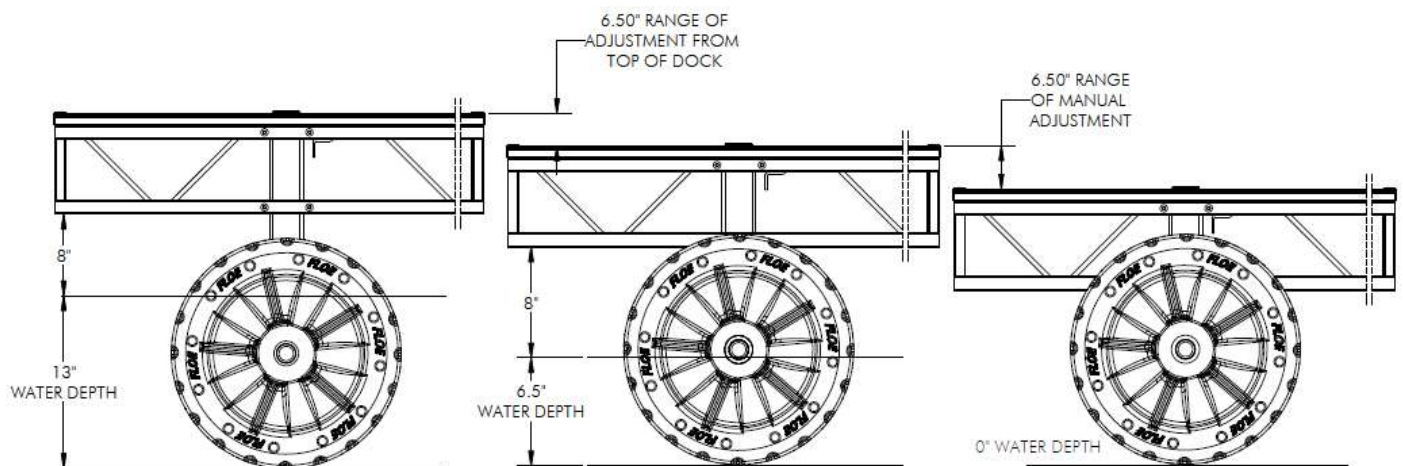
WE RECOMMEND THAT THE LOWER DOCK FRAME IS A MINIMUM OF 8" ABOVE THE WATER WHEN PROPERLY ADJUSTED. HOWEVER, IF YOU HAVE HIGH WAVE CONDITIONS THAT COMMONLY EXCEED 15", WE RECOMMEND THAT YOU RAISE YOUR DOCK ACCORDINGLY.



WARNING



NEVER ADJUST YOUR DOCK LEGS WITH AN IMPACT WRENCH. NEVER ADJUST YOUR DOCK LEGS WITH MORE THAN 15 FT-LBS OF FORCE. APPLYING TOO MUCH FORCE TO YOUR DOCK LEGS WILL DAMAGE THE MECHANISM.



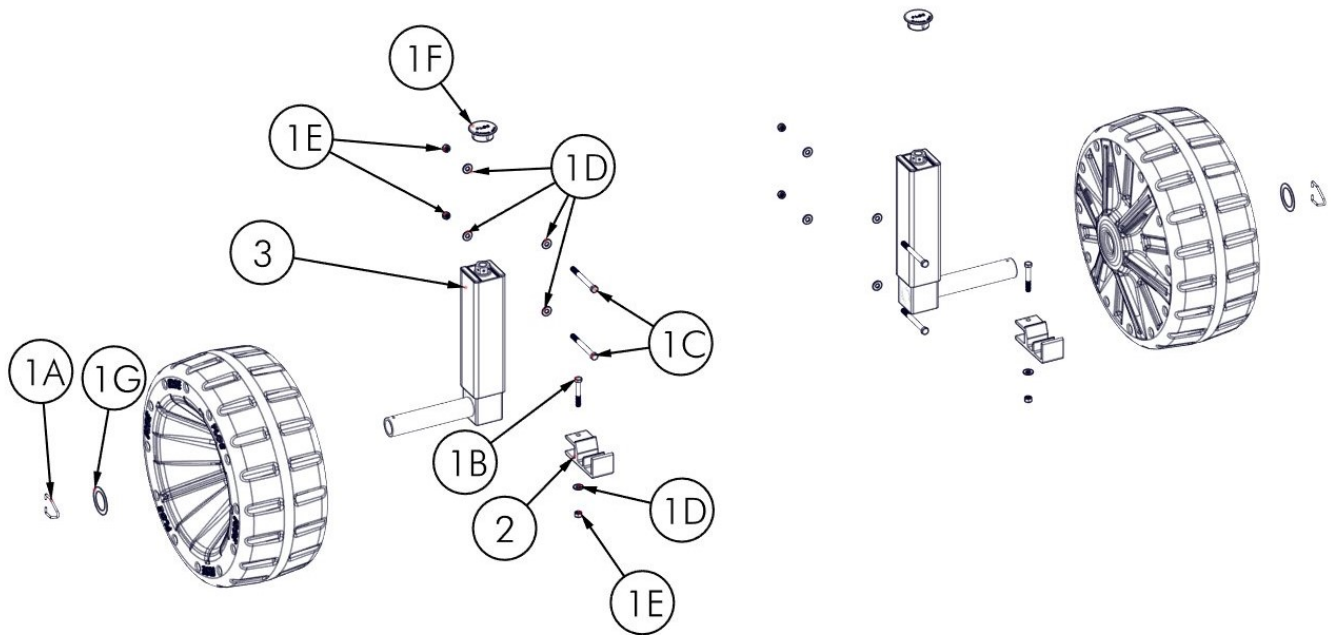
X-SHALLOW WHEEL KIT
FULLY EXTENDED

X-SHALLOW WHEEL KIT
FULLY COLLAPSED

BILL OF MATERIALS/EXPLODED VIEW

510-17100-00	WHEEL KIT, X-SHALLOW (PAIR) BZ		
NUMBER	PART NUMBER	QTY.	DESCRIPTION
1	001-02311-00	1	FASTENERS, SHALLOW W/K PAIR
2	002-02080-00	2	CONNECT, QUICK - DOCK
3	110-01209-00	2	ASS'Y, W/K LEG (X-SHALLOW) BRONZE

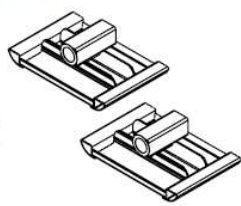
001-02311-00	FASTENERS, SHALLOW W/K PAIR		
NUMBER	PART NUMBER	QTY.	DESCRIPTION
1A	001-26728-00	2	CLIP, STAINLESS STEEL SPINDLE
1B	001-70113-00	2	HHCS, 3/8-16 X 2-1/2" 18-8 SS
1C	001-70119-00	4	HHCS, 3/8-16 X 4" 18-8 SS
1D	001-71017-00	10	FLAT WASHER, 3/8" SAE SS 18-8
1E	001-76349-00	6	NUT, 3/8-16 ALUM.
1F	006-13200-00	2	CAPLUG, 2" ROUND
1G	010-00020-00	2	WASHER, 2.5" O.D. X 1.75" I.D.



SOLD SEPARATELY



Plastic dock wheels
Drilled 010-06001-00
Floating 010-06002-00



Sand pods
P/N 510-17000-00

STEP 1

TURN DOCK UPSIDE DOWN AND BLOCK CORNERS (OR USE A SOFT SURFACE) TO PROTECT THE DECK SURFACE (FIGURE 1.1). INSERT WHEEL KIT LEGS INTO THE POCKETS THAT ARE PRE-INSTALLED ON THE DOCK (FIGURE 1.2).

FIGURE 1.1

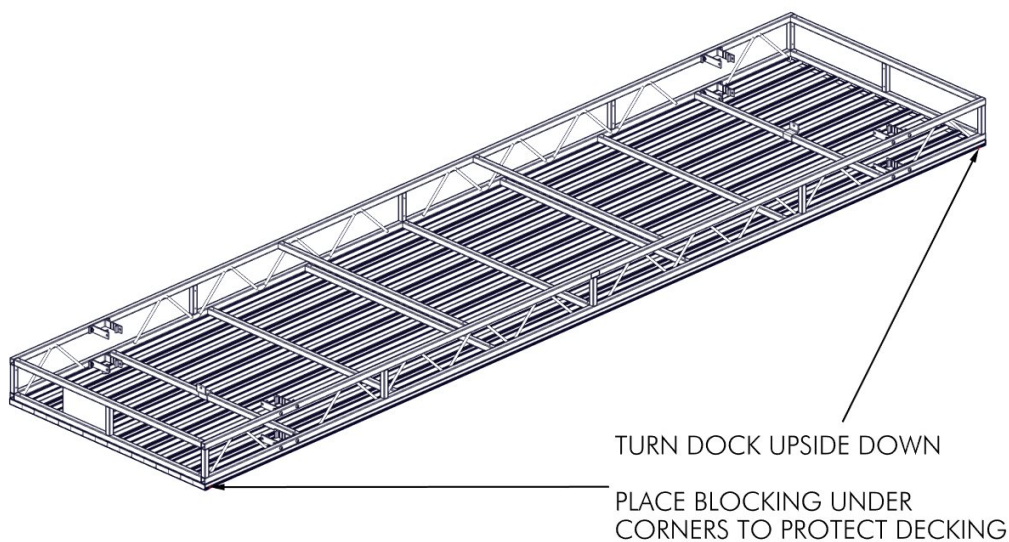
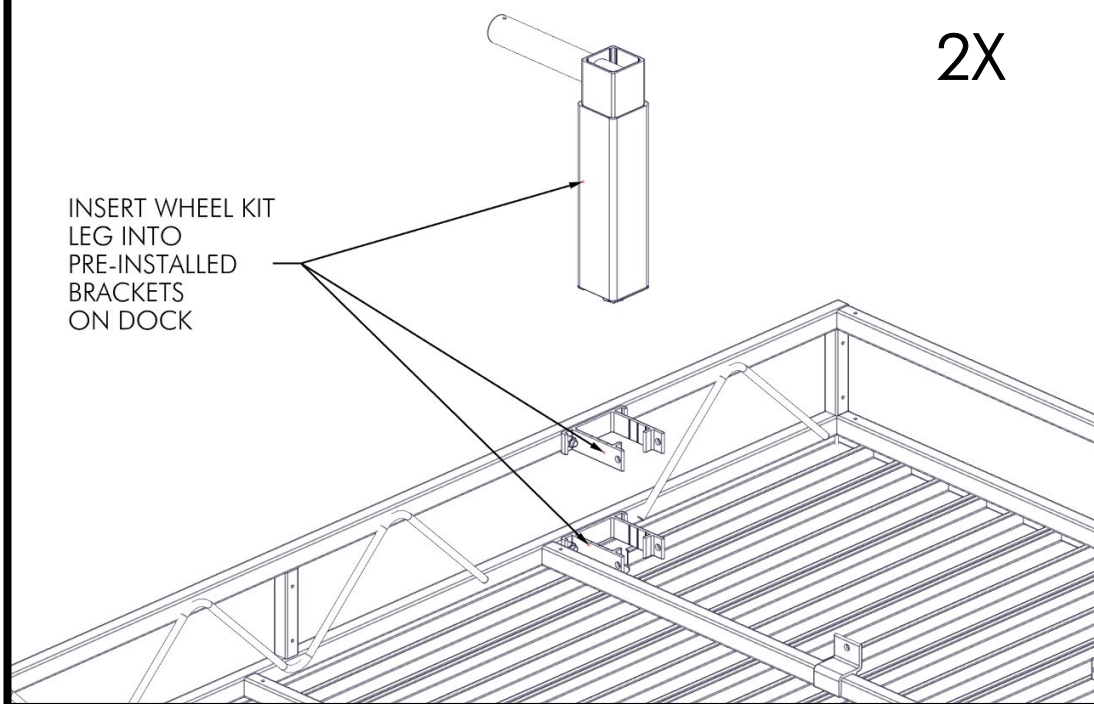


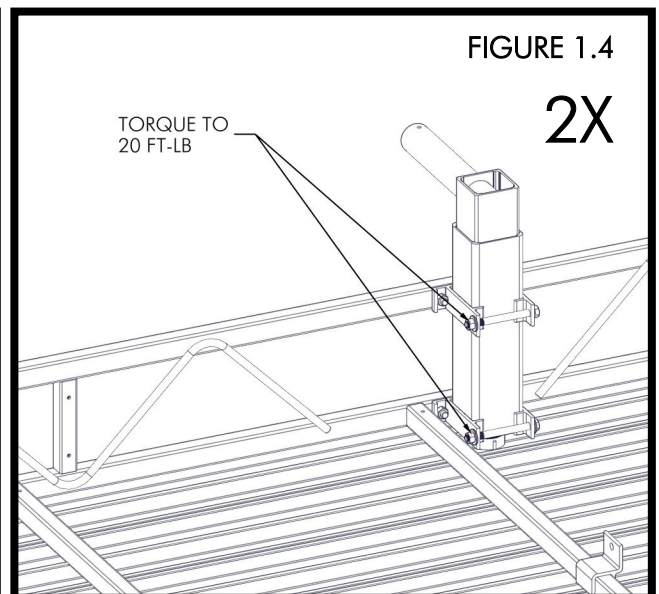
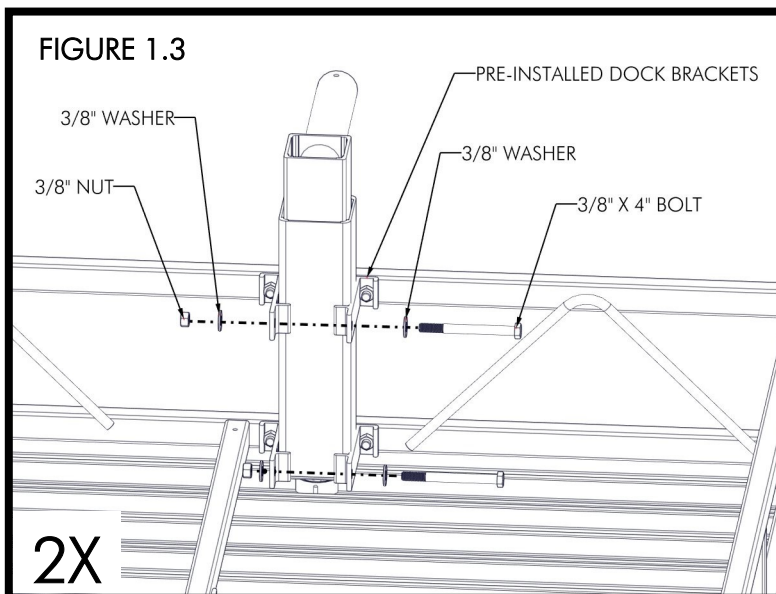
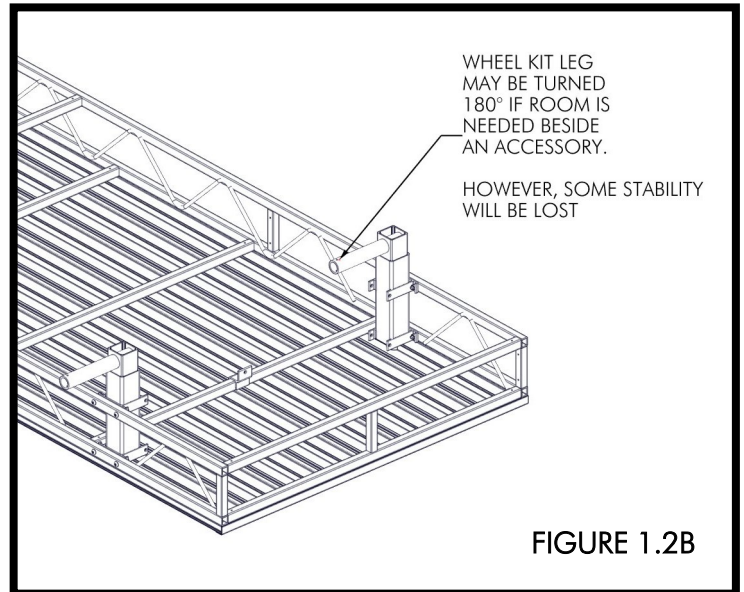
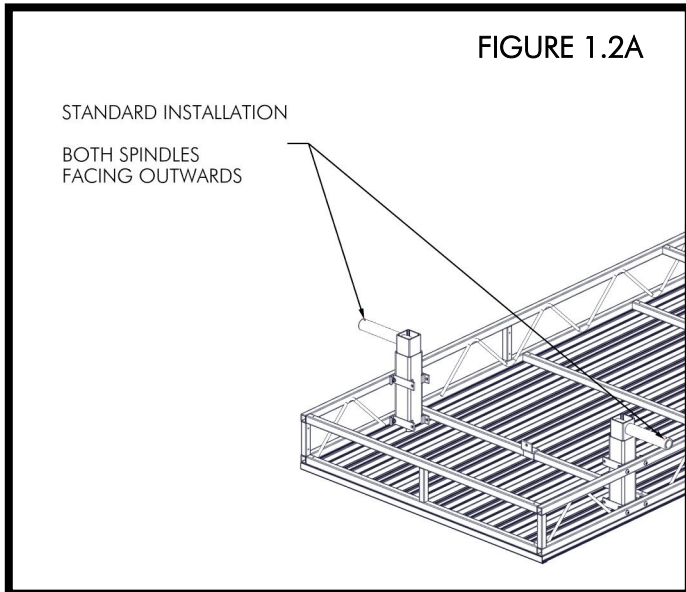
FIGURE 1.2

2X

INSERT WHEEL KIT
LEG INTO
PRE-INSTALLED
BRACKETS
ON DOCK

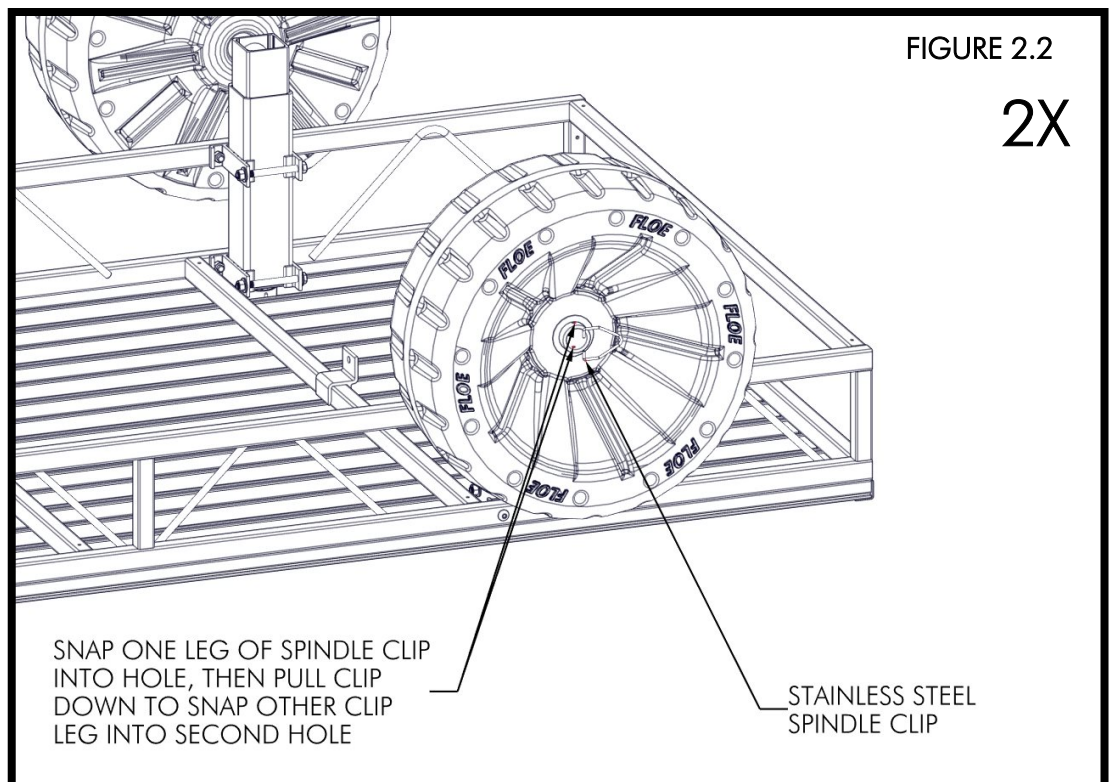
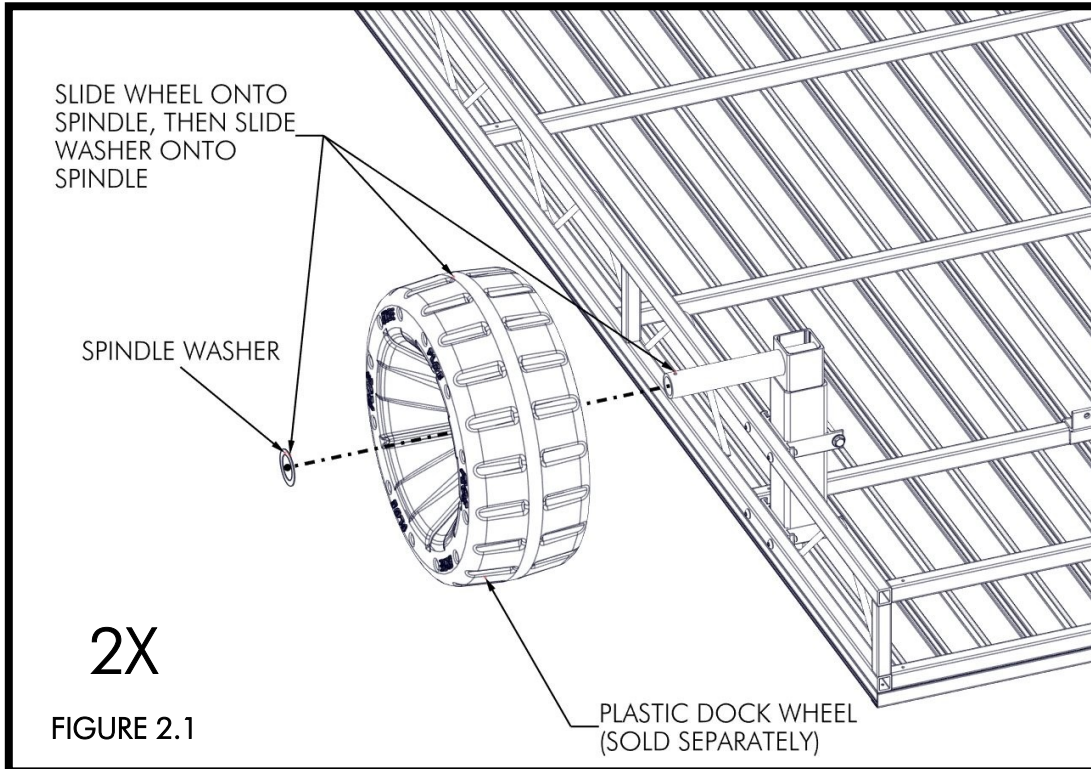


UNDER NORMAL CONDITIONS, THE WHEEL KITS ARE MOUNTED AS SHOWN IN FIGURE 1.2A. IF NECESSARY, WHEEL KITS MAY BE TURNED 180° FOR BOAT LIFT CLEARANCE. HOWEVER, SOME STABILITY MAY BE LOST (FIGURE 1.2B). REFER TO DOCK OWNER'S MANUAL FOR SPECIAL CONDITIONS ON SETTING UP YOUR DOCK. SECURE THE WHEEL KIT LEGS TO THE DOCK USING (1) 3/8" X 4" BOLTS, (2) 3/8" WASHERS, AND (1) 3/8" NUT PER BRACKET (2 BRACKETS PER LEG) (FIGURE 1.3). ONCE ALL HARDWARE IS INSTALLED, TORQUE TO 20 FT-LBS (FIGURE 1.4).



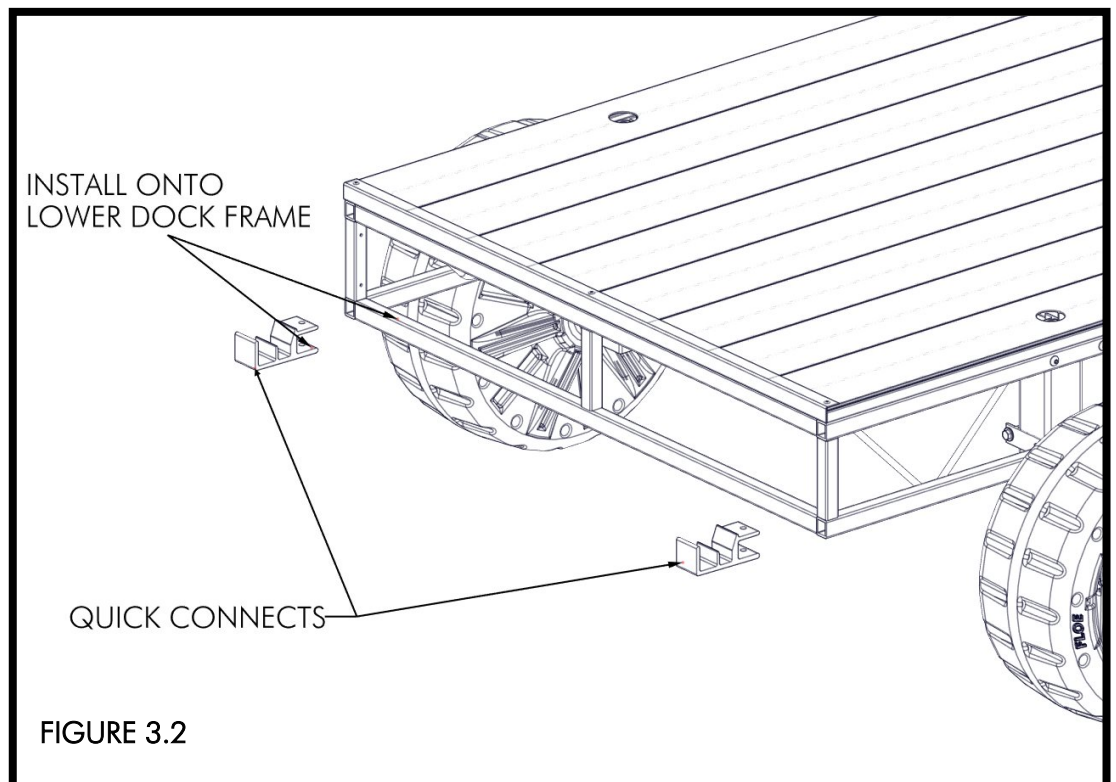
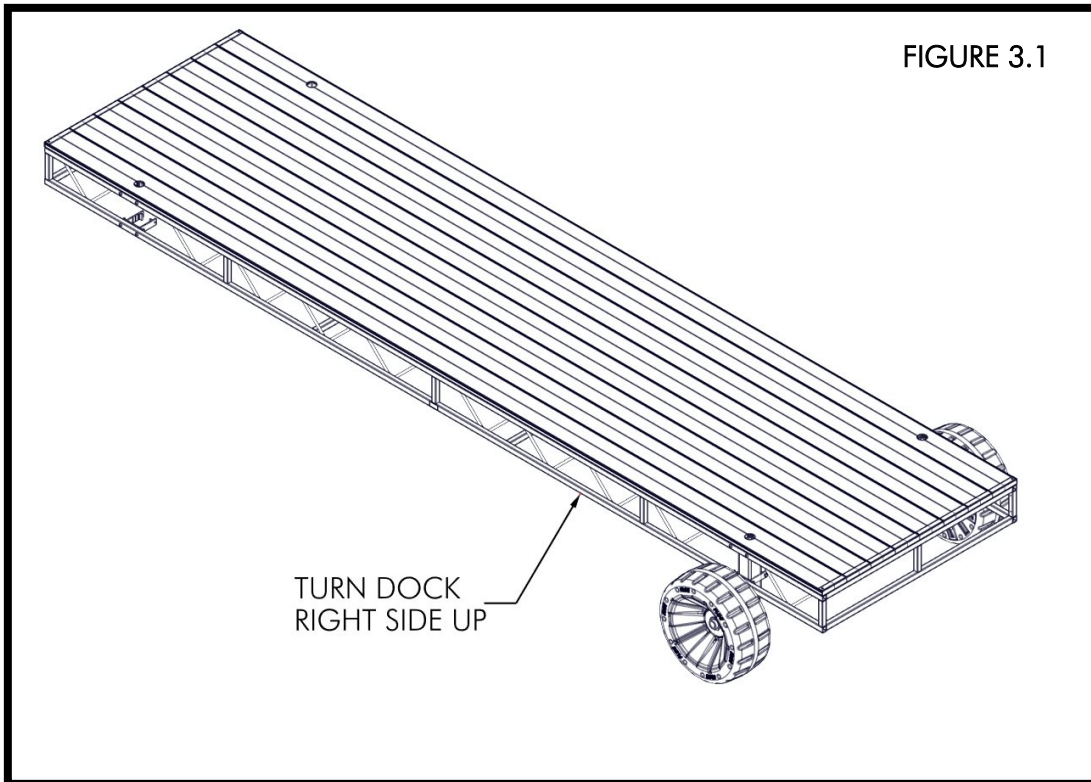
STEP 2

SLIDE WHEEL(S) (SOLD SEPARATELY) ONTO THE SPINDLE ON THE WHEEL KIT AND PLACE A 2-1/2" WASHER ONTO THE SPINDLE (FIGURE 2.1). INSERT SPINDLE CLIP LEG INTO ONE OF THE HOLES IN THE SPINDLE, THEN PULL CLIP DOWN TO SNAP OTHER CLIP LEG INTO THE SECOND HOLE (FIGURE 2.2).

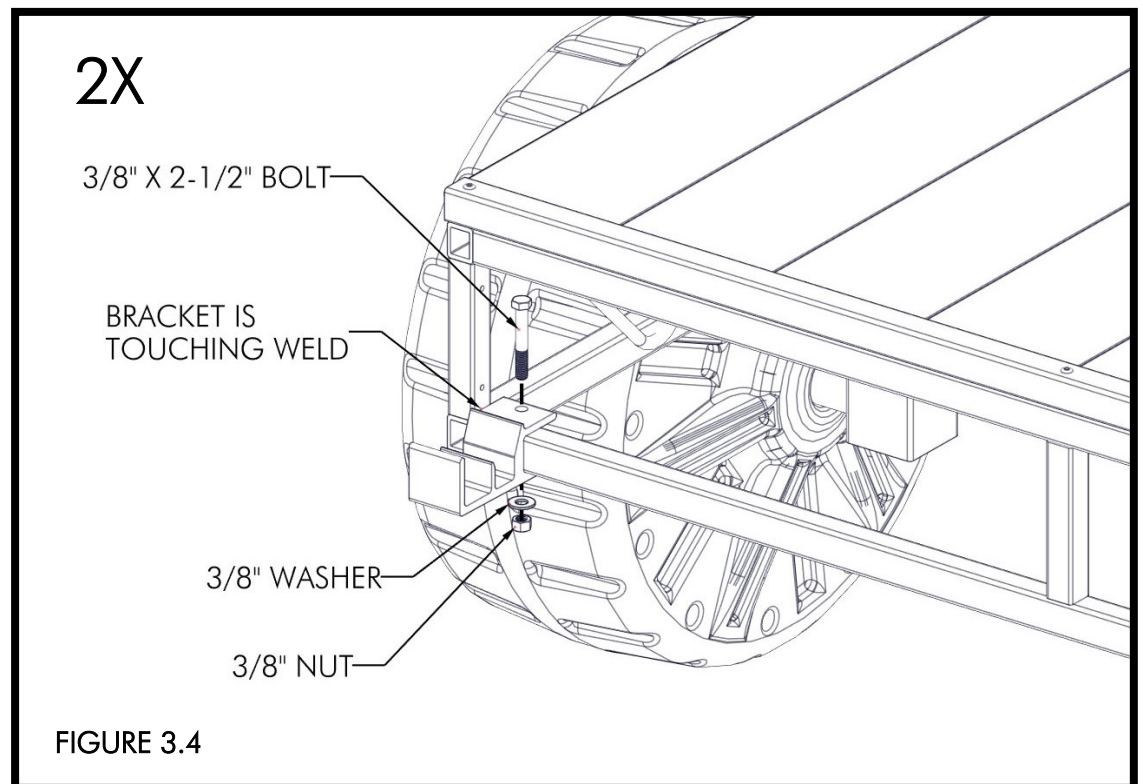
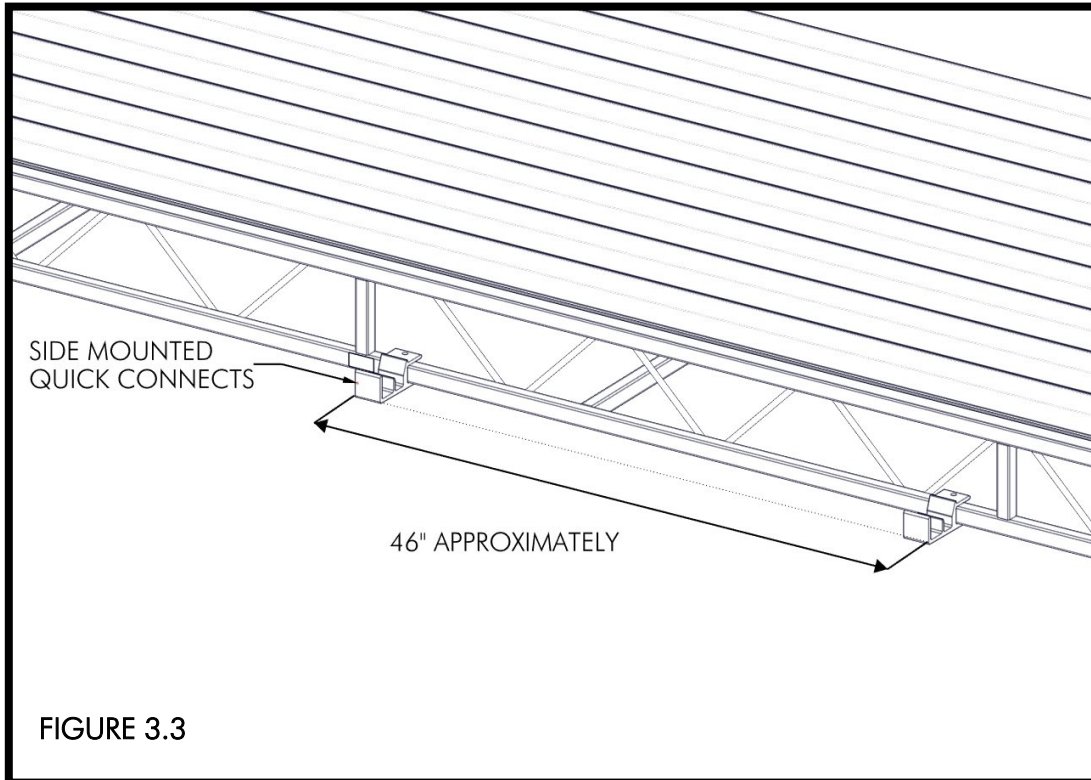


STEP 3

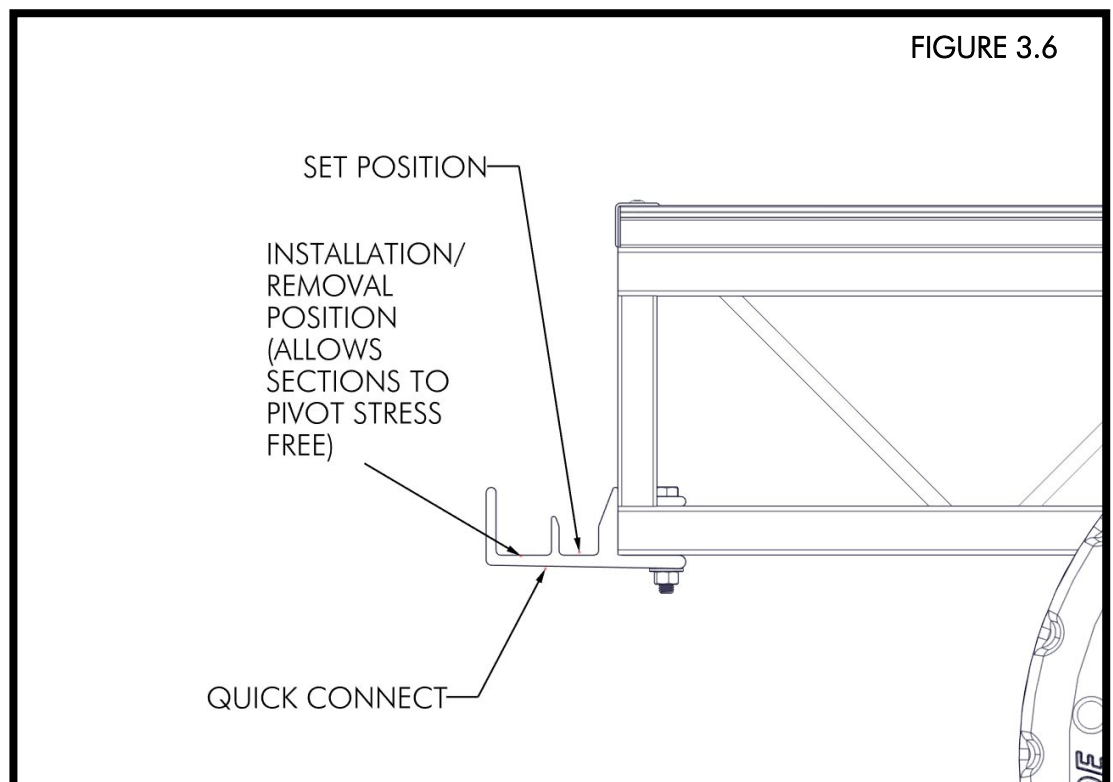
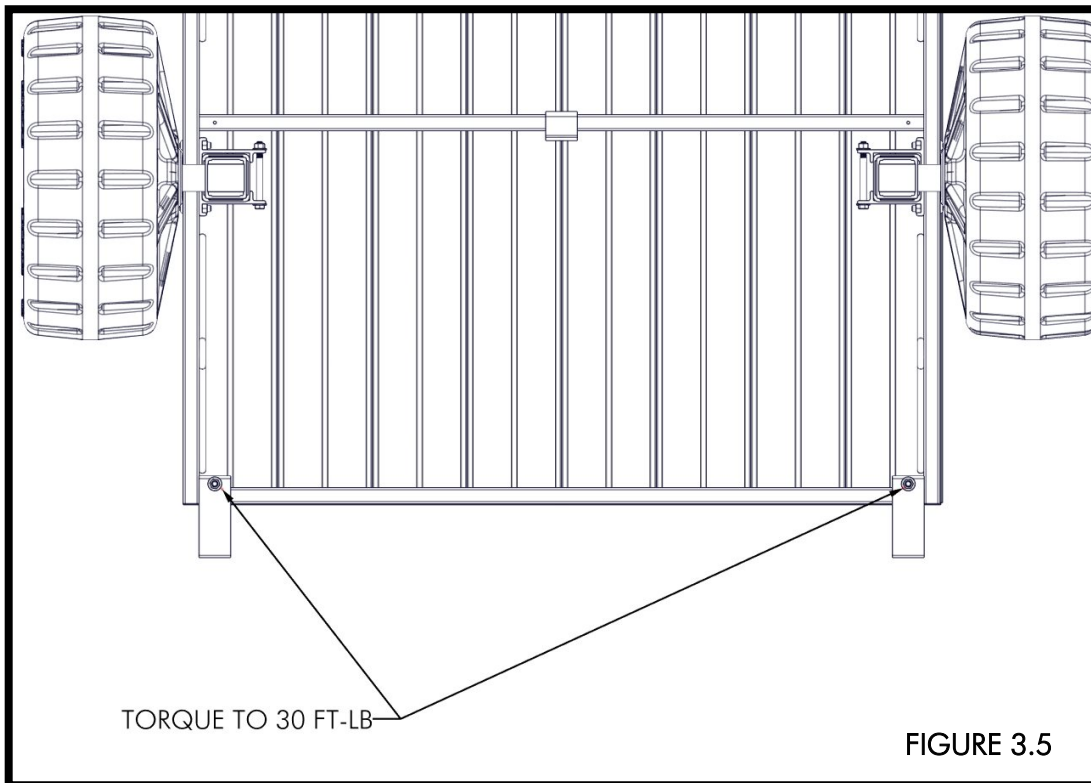
TURN DOCK RIGHT SIDE UP (FIGURE 3.1). ATTACH QUICK CONNECTS TO THE WHEEL KIT END OF THE DOCK SECTION IF ANOTHER SECTION IS TO BE CONNECT TO IT. TO ATTACH DOCK SECTIONS IN A STRAIGHT LINE, QUICK CONNECTS SHOULD BE ASSEMBLED AS SHOWN. SPACE THE QUICK CONNECTS AS FAR OUT AS POSSIBLE (FIGURE 3.2).



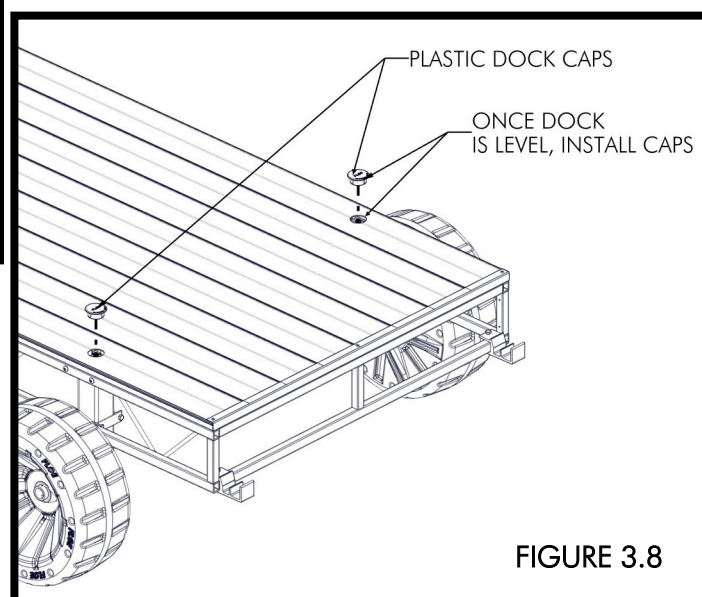
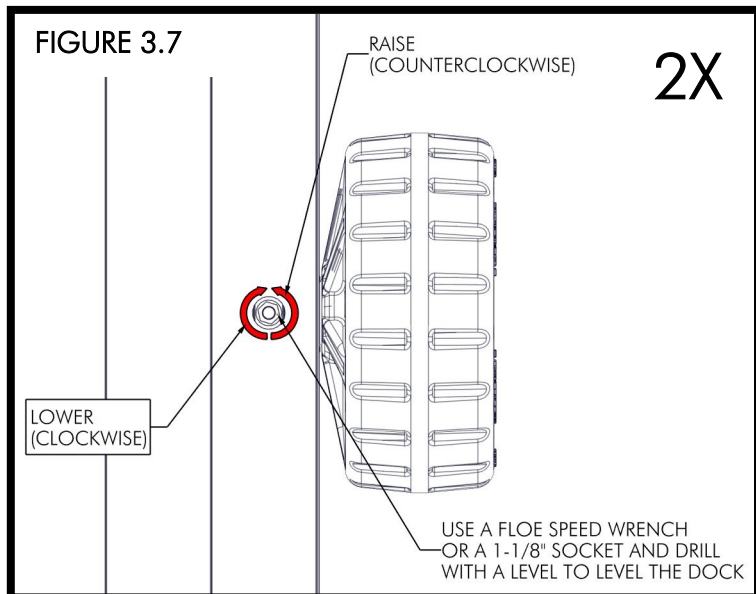
WHEN ANOTHER DOCK SECTION CONNECTS TO A SIDE OF THE DOCK, QUICK CONNECTS SHOULD BE PLACED AS SHOWN (FIGURE 3.3). ATTACH USING (1) 3/8" X 2-1/2" BOLT, (2) 3/8" WASHERS, AND (1) 3/8" NUT PER BRACKET (FIGURE 3.4).



TORQUE TO 30 FT-LBS (FIGURE 3.5). QUICK CONNECTS SHOULD BE SPREAD APART AS FAR AS POSSIBLE TO KEEP THE JOINING SECTION FROM SHIFTING SIDEWAYS. PLACE CONNECTING DOCK SECTIONS IN THE QUICK CONNECT INSTALLATION/REMOVAL POSITION WHEN INSTALLING OR REMOVING MULTIPLE SECTIONS. PUSH THE DOCKS INTO POSITION IN THE WATER. ONCE THE DOCKS ARE IN POSITION, PUT THEM IN THE QUICK CONNECTS SET POSITION (FIGURE 3.6).



USING A FLOE SPEED WRENCH OR 1-1/8" SOCKET AND DRILL, ADJUST THE HEIGHT OF THE DOCK SO THE BOTTOM FRAME OF THE DOCK IS APPROXIMATELY 8" ABOVE THE WATER. *SEE NOTE ON SHEET 1. TURN THE DOCK ADJUSTING NUT ON THE TOP OF THE DOCK CLOCKWISE TO LOWER THE DOCK AND COUNTERCLOCKWISE TO RAISE THE DOCK. USE A LEVEL TO MAKE SURE ALL DOCK SURFACES ARE LEVEL (FIGURE 3.7). ONCE THE DOCK IS SET IN PLACE AND LEVELED, INSERT THE PLASTIC CAPS IN THE ADJUSTMENT NUT HOLE (FIGURE 3.8).



! WARNING !

CORDLESS DRILL MAY COME TO A SUDDEN STOP WHEN THE LEG IS FULLY EXTENDED OR RETRACTED.

BE SURE TO HAVE YOUR CORDLESS DRILL IN CLUTCH MODE WHEN ADJUSTING THE LEGS. USE OF A CORDED DRILL MAY CAUSE ELECTROCUTION. FAILURE TO USE DRILL IN CLUTCH MODE MAY CAUSE INJURY TO YOUR HAND OR ARM.

! WARNING !

NEVER ADJUST YOUR DOCK LEGS WITH AN IMPACT WRENCH. IF YOU CAN NOT TURN THE ADJUSTING NUT, DO NOT FORCE IT – YOU HAVE REACHED THE END OF THE ADJUSTMENT RANGE. DO NOT EXCEED 15 FT-LBS. APPLYING TOO MUCH FORCE TO YOUR DOCK LEGS WILL DAMAGE THE MECHANISM.

NOTES

NOTES

FLOE INTERNATIONAL, INC.

DOCK SYSTEM 15 YEAR LIMITED WARRANTY

FLOE INTERNATIONAL, INC. warrants, to the original purchaser, the FLOE dock system to be free from original defects in materials and workmanship under conditions and loads for which designed, and from the date of consumer purchase, (or if a demo, from the date of first service), as follows:

New Warranty Guidelines - Effective September 1, 2004

Two-Year Parts and Labor Warranty

FLOE INTERNATIONAL, INC. will repair or replace, at their option, any portion of the dock system which fails as a result of a defect in material or workmanship during the first two years after the date of purchase. Items purchased by FLOE INTERNATIONAL, INC. are warranted by the original manufacturer and warranty is extended only to the original retail purchaser. FLOE INTERNATIONAL, INC. reserves the right to inspect and perform repairs at its main facility (F.O.B.) McGregor, Minnesota. This full two-year warranty includes parts and labor on the dock system and accessories including the following:

Aluminum frame structure, wheel kits, leg bracing, support poles, quick-connects, benches, ladders, and bumpers.

Labor charges and mileage covered within 15 miles from FLOE or the authorized FLOE dealership performing the repairs. Additional mileage/travel charges will apply if travel over 15 miles is required. This charge is determined by the repairing dealer and must be paid by the customer to the dealer performing the repairs. Warranty does not cover damage, including broken welds, caused by improper handling, installation or removal, or any damage of any sort caused by the use of power equipment, such as vehicles used to remove docks.

Extended Parts Warranty

In addition to this two-year parts and labor warranty, additional warranty coverage applies to specific parts of the dock and accessories. All warranty coverage beyond two years is for parts only. Labor costs for any warranty claim are not covered past two years.

Aluminum Dock Frame & Aluminum Dock Deck – 15-Year Limited Warranty

Defects in material and workmanship of structural components of the dock frame and deck are covered for 10 years from the date of purchase (excluding paint finish). FLOE will provide replacement parts, on a non pro-rated basis, for ten years from the date of purchase for these items if they are found to be defective in workmanship. After this 10-year parts warranty, an additional five-year pro-rated warranty covers these components as shown below. Aluminum decking warranty does not include paint wear, scratches or denting.

Year After Purchase	Consumer Portion of Current Retail Price
11	40%
12	50%
13	60%
14	70%
15	90%

Carpet and Cedar Dock Decking

With the following exceptions, carpet, cedar and color fade dock decking is covered by the full two-year parts and labor warranty (above). On cedar decks, cracks and splintering are normal characteristics of wood and are not covered by this warranty. There is no further warranty over the two years on cedar deck docks.

In addition to the two-year warranty, carpet docks are warranted to be free from defects in material and workmanship on a pro-rated basis, for up to 10 years as shown below. Warranty does not cover fading, mildew, or wear.

Year After Purchase	Consumer Portion of Current Retail Price	Year After Purchase	Consumer Portion of Current Retail Price
3-5	0%	8	60%
6	40%	9	70%
7	50%	10	90%

Dock Accessories and Wheel Kit — 10-Year Limited Warranty

Defects in material and workmanship of certain accessories of FLOE dock systems are covered under a 10-year pro-rated warranty. Items covered in this 10-year pro-rated warranty include wheel kit legs, wheel kit braces, plastic wheels, benches (except cedar boards), bumpers, ladders, shore-end ramps (except cedar boards), support poles, and hammocks.

The pro-rated schedule of these items is as follows:

Year After Purchase	Consumer Portion of Current Retail Price	Year After Purchase	Consumer Portion of Current Retail Price
3	20%	7	60%
4	30%	8	70%
5	40%	9	80%
6	50%	10	90%

Dock Floats — 12-Year Limited Warranty

Dock floats used on FLOE floating dock systems are warranted to the original owner against cracking, peeling, sloughing, and deterioration from ultraviolet rays, while retaining its resiliency against ice and bumps by watercraft under normal usage.

This warranty does not cover any float drum that has been subject to negligence, misuse, alterations, accidents, storm abuse or improper installation and support.

Floats are covered in the two-year parts and labor warranty. In addition, FLOE will provide replacement floats on a non pro-rated basis for the first eight years and then pro-rated as below. Replacement labor not included.

Year After Purchase	Consumer Portion of Current Retail Price
9	60%
10	70%
11	80%
12	90%

This warranty covers only the cost for replacement of materials due to defects in materials or workmanship, and represents the only warranty authorized by us. In order to receive performance under this warranty, all warranty repairs must be authorized in advance by FLOE INTERNATIONAL, INC.

Additional Warranty Information Including Exclusions and Owner's Rights

FLOE INTERNATIONAL, INC. will not be responsible for any costs incurred for unauthorized repairs or improper assembly. Unauthorized repairs may void the warranty on items repaired! Warranty repairs are subject to a \$20.00 customer (consumer) deductible co-payment. This warranty does not cover damage resulting from overloading of the boat lift, misuse, wind, storm or ice damage, (or any act of God), being struck by any type of watercraft, or negligence. This warranty covers personal use and does not apply to commercial or rental use. The manufacturer is not responsible for damage where repairs have been made or attempted by others. Items purchased by FLOE INTERNATIONAL, INC. are warranted by the original manufacturer and warranty is extended only to the original retail purchaser. FLOE INTERNATIONAL, INC. reserves the right to inspect and perform repairs at its main facility (F.O.B.) McGregor, Minnesota. The customer is responsible for freight charges incurred in transporting the warranty product to and from FLOE or an authorized FLOE dealership, with the exception of claims covered by the two-year parts and labor warranty that provides service up to 15 miles from the dealer. FLOE INTERNATIONAL reserves the right to inspect and perform rework at its main facility (F.O.B.) McGregor, Minnesota. Specifications may change without notice or obligation.

Completing & Submitting Your Warranty Claim

To receive performance under this warranty, contact your authorized FLOE dealer. Be prepared to provide the following information so that the dealer can complete a warranty claim form: receipt and date of purchase; your name, address and telephone numbers; the serial or vehicle identification numbers; and a detailed description of the problem.

THERE ARE NO OTHER EXPRESSED OR IMPLIED WARRANTIES

Our obligations under this warranty are limited to repair or replacement at our discretion, and FLOE SHALL NOT BE LIABLE FOR INCIDENTAL OR CONSEQUENTIAL DAMAGES OF ANY KIND.

This Warranty gives you specific legal rights and you may have other rights which may vary from state to state.

Instantly register your FLOE products online!

www.floeintl.com/registration



WARRANTY REGISTRATION

NOTE: FLOE products must be registered within 15 days of purchase to validate warranty. Please photocopy and fill out the form below and place in an envelope with proper postage or quickly register online. Please complete all information requested. FLOE INTERNATIONAL, INC. is not responsible for lost, stolen or misplaced warranty registrations. If you are mailing in your registration please address it to: FLOE International Inc., Warranty Registration Dept. 48473 State Hwy 65, McGregor, MN 55760-9514

NAME: _____ PHONE: _____ / _____

ADDRESS: _____ CITY: _____ STATE: _____ ZIP: _____

DATE PURCHASED: ____/____/____ DEALER PURCHASED FROM: _____

E-mail: _____

☐ Yes please ☐ No you cannot contact me via e-mail with great offers and special promotions from FLOE International and it's quality authorized dealers.

PRODUCT PURCHASED *Please check all that apply*

☐ FLOE TRAILER.....Size: _____ Model: _____ VIN#: _____

☐ POLARIS TRAILERSize: _____ Model: _____ VIN#: _____

☐ TRAILER ENCLOSURE.....Size: _____ Model: _____

☐ BOAT LIFT SYSTEM..... Model: _____

☐ ROLL-IN DOCKDECKING IS: ☐ Cedar - ☐ Carpeted - ☐ Aluminum - ☐ Aluma-Grain

☐ FLOATING DOCKDECKING IS: ☐ Cedar - ☐ Aluminum - ☐ Aluma-Grain

NOTE: Please list Size for each Dock Component.

Size: _____ x _____ Size: _____ x _____ Size: _____ x _____ Size: _____ x _____ Size: _____ x _____

Size: _____ x _____ Size: _____ x _____ Size: _____ x _____ Size: _____ x _____ Size: _____ x _____

Accessory: _____ Accessory: _____ Accessory: _____

Accessory: _____ Accessory: _____ Accessory: _____

TELL US ABOUT YOURSELF

How did you hear about FLOE: _____

Family Income: ☐ 25,000 - 50,000 ☐ 50,000 - 75,000 ☐ 75,000 - 100,000 ☐ 100,000 - 125,000 ☐ 125,000 - 150,000 ☐ over 150,000

Your Occupation: ☐ Professional/Technical ☐ Upper Management/Executive ☐ Middle Management ☐ Sales/Marketing
☐ Clerical/Service Worker ☐ Tradesman/Machine Operator/ Laborer

Spouses Occupation: ☐ Professional/Technical ☐ Upper Management/Executive ☐ Middle Management ☐ Sales/Marketing
☐ Clerical/Service Worker ☐ Tradesman/Machine Operator/ Laborer

Age Range: ☐ 18 - 29 ☐ 30 - 45 ☐ 46 - 55 ☐ over 55

Education: ☐ High School ☐ 2 year college ☐ 4 year college ☐ Graduate school

What most influenced you to buy a FLOE product: (select one)

☐ Advertisement ☐ Quality ☐ Warranty ☐ Price ☐ Style/Appearance ☐ Features/Benefits

