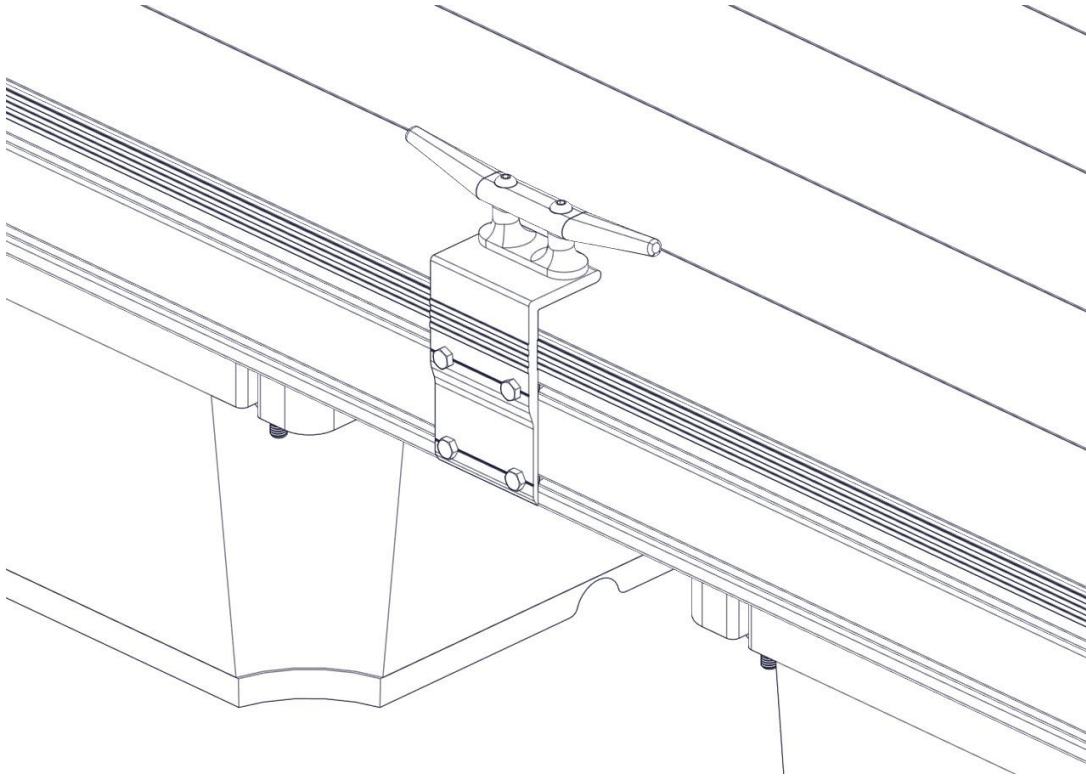


# FLOE FLOATING DOCK CLEAT ATTACHMENT KIT ASSEMBLY INSTRUCTIONS



KIT P/N 510-02361-00



\*DOCK SECTION NOT INCLUDED

**NOTE:**

CLEAT IS SOLD SEPARATELY.

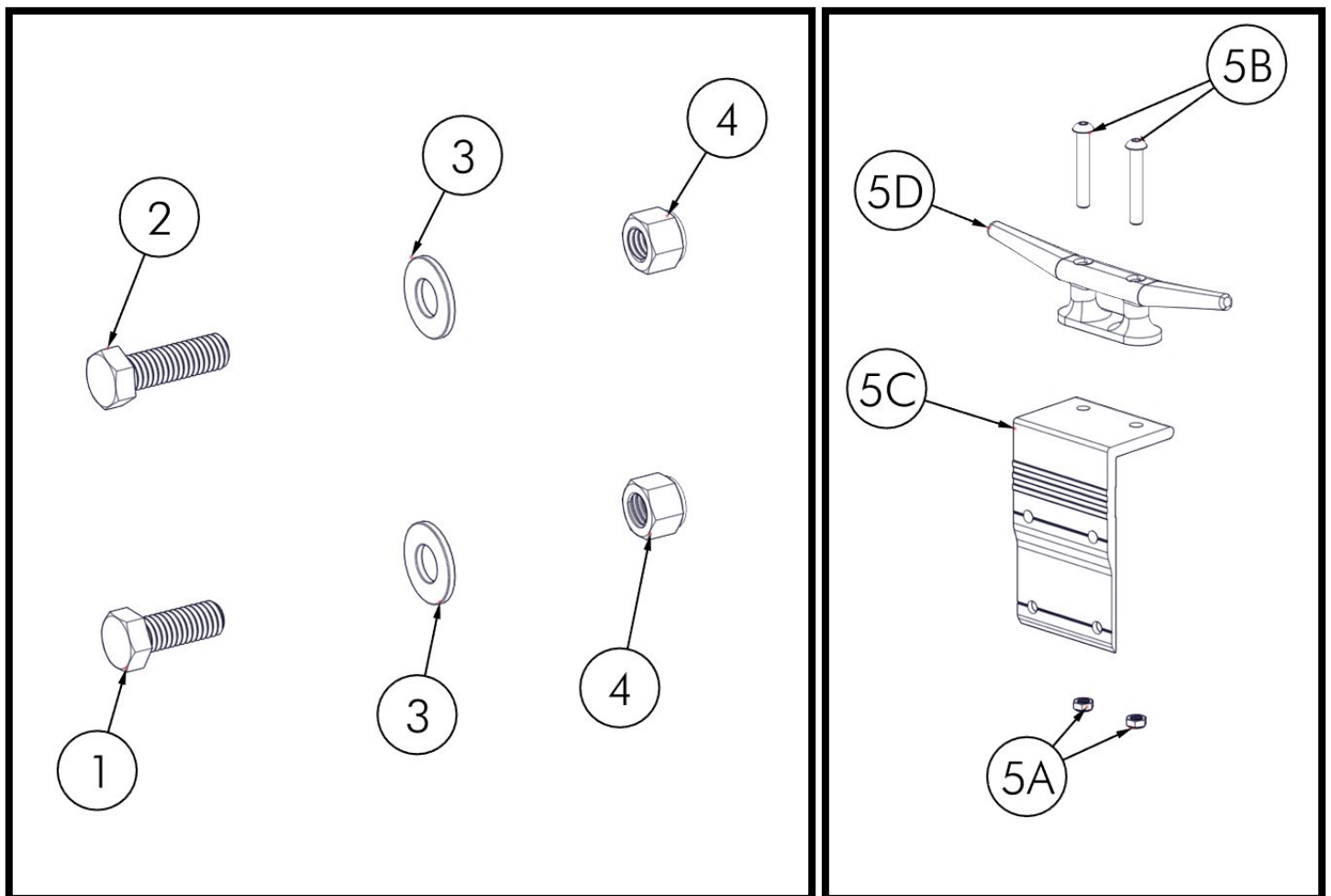
TOOLS REQUIRED

- 9/16" SOCKET/WRENCH
- TORQUE WRENCH

# BILL OF MATERIALS

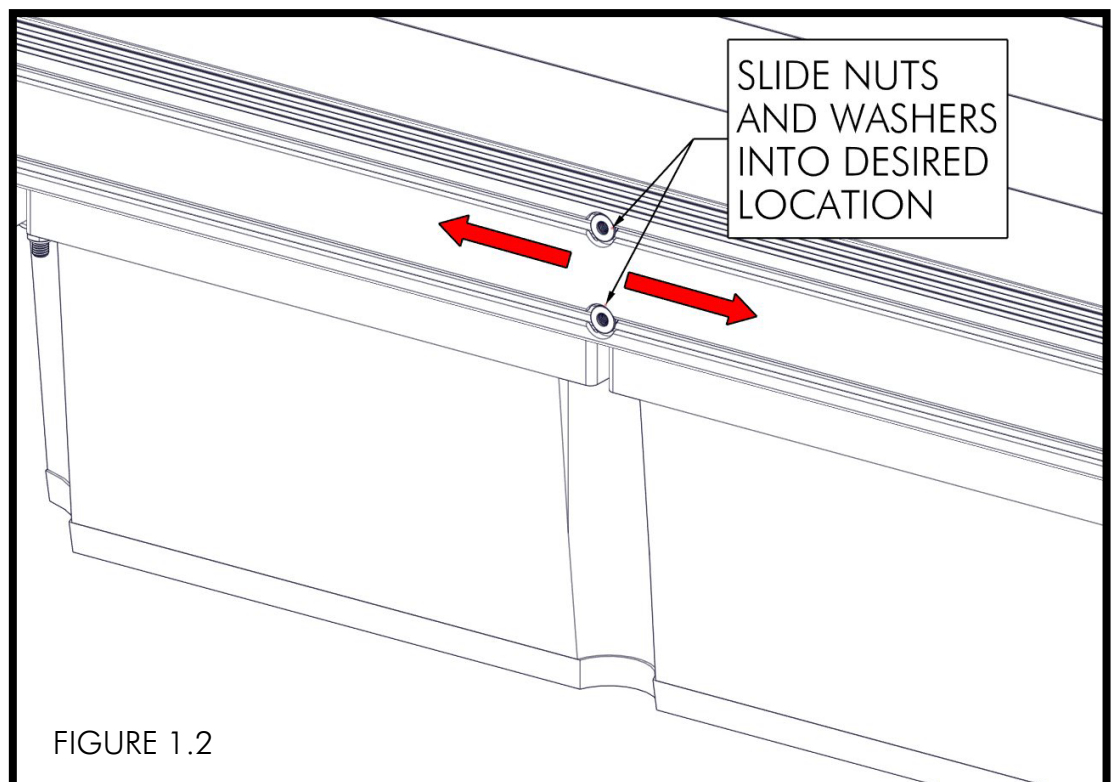
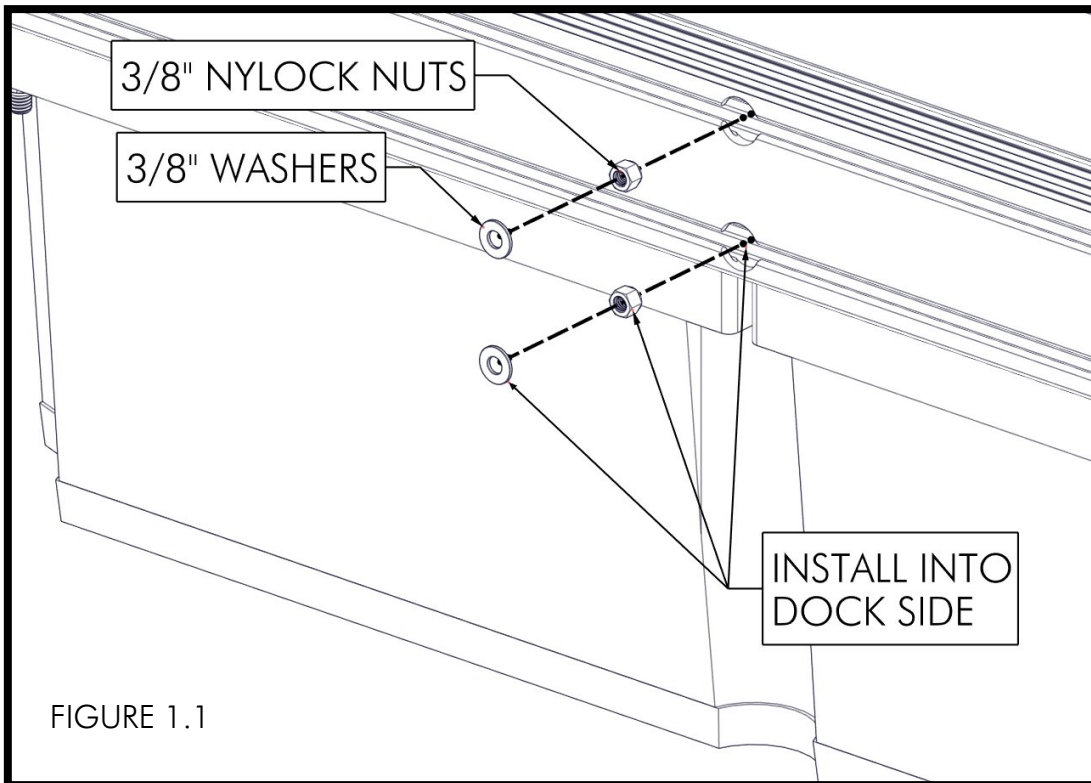
P/N 510-02361-00		KIT, CLEAT MTG. HRDW. FLOATING DOCK	
NUMBER	PART NUMBER	DESCRIPTION	QTY
1	001-70105-00	HHCS, 3/8-16 X 1" 18-8 SS	2
2	001-70107-00	HHCS, 3/8-16 X 1-1/4" 18-8 SS	2
3	001-71017-00	FLAT WASHER, 3/8" SAE SS 18-8	4
4	001-76071-00	NUT, NYLOCK 3/8-16 ALUM.	4

P/N 510-05360-01		CLEAT, CAST ALUM. 10" (NOTE: NOT INCLUDED WITH 510-02362-00)	
NUMBER	PART NUMBER	DESCRIPTION	QTY
5	110-00078-00	ASS'Y, CLEAT BRACKET 10" CAST ALUM	1
5A	001-37026-00	NUT, 3/8-16 JAM NYLOCK - ZINC	2
5B	001-73821-00	BHCS, 3/8-16 X 2-1/2" SS 18-8	2
5C	002-02532-00	ANGLE, DOCK CLEAT - 4"	1
5D	510-34300-00	DOCK CLEAT, 10" CAST ALUM	1



## ASSEMBLY

FIRST, DETERMINE WHERE THE CLEAT WILL BE INSTALLED ON THE DOCK SYSTEM. INSERT (2) 3/8" NYLOCK NUTS AND (2) 3/8" WASHERS INTO THE HOLES ON EACH TRACK IN THE SIDE OF THE DOCK (FIGURE 1.1) AND SLIDE TO THE DESIRED LOCATION (FIGURE 1.2).



INSERT (2) 3/8" X 1" BOLTS AND (2) 3/8" X 1-1/4" BOLTS INTO THE CLEAT BRACKET AND INTO THE CORRESPONDING NUTS AND WASHERS AS SHOWN (FIGURE 1.3). TORQUE TO 40 FT-LB (FIGURE 1.4)

