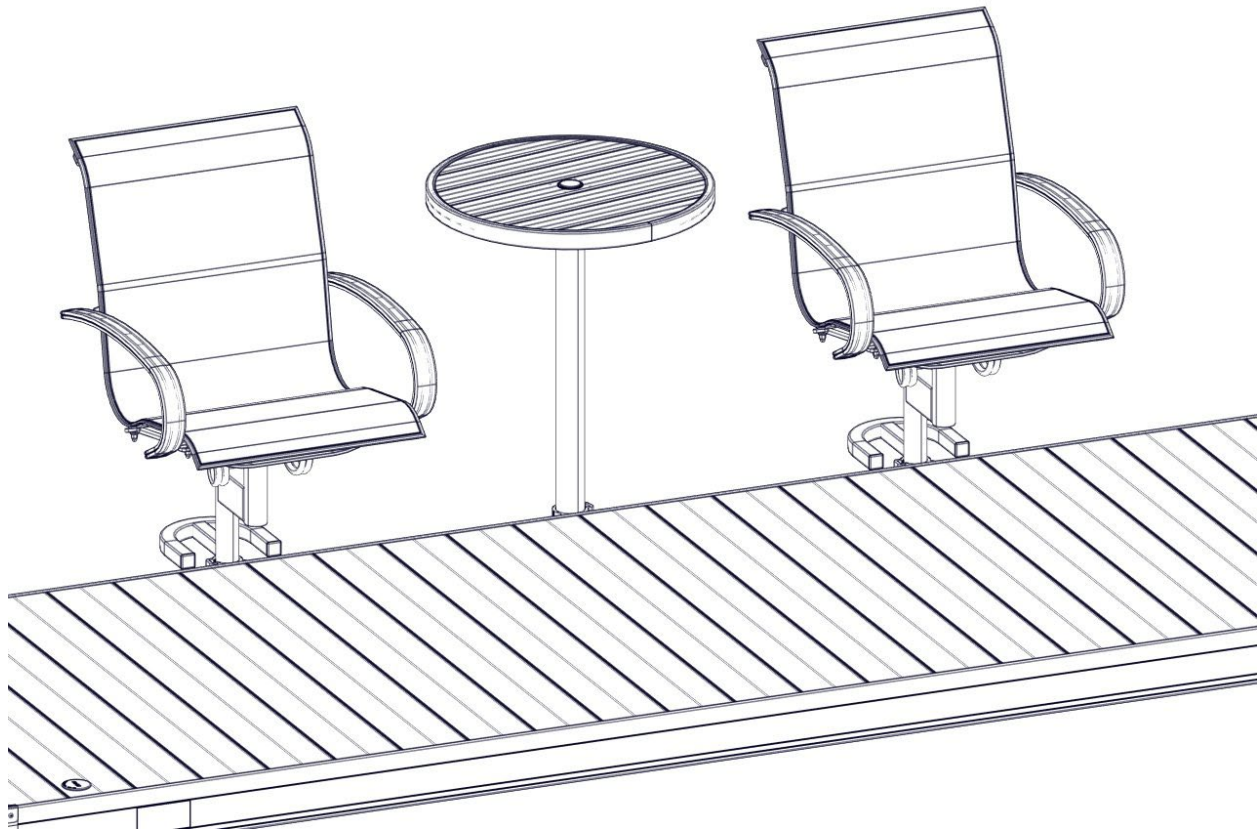


# FLOE STANDARD SECTIONAL DOCK FURNITURE ATTACHMENT KIT

## ASSEMBLY INSTRUCTIONS

KIT P/N 510-00458-00 CHAIR MOUNTING

P/N 510-00459-00 TABLE MOUNTING



\*DOCK SECTION NOT INCLUDED

### **NOTE:**

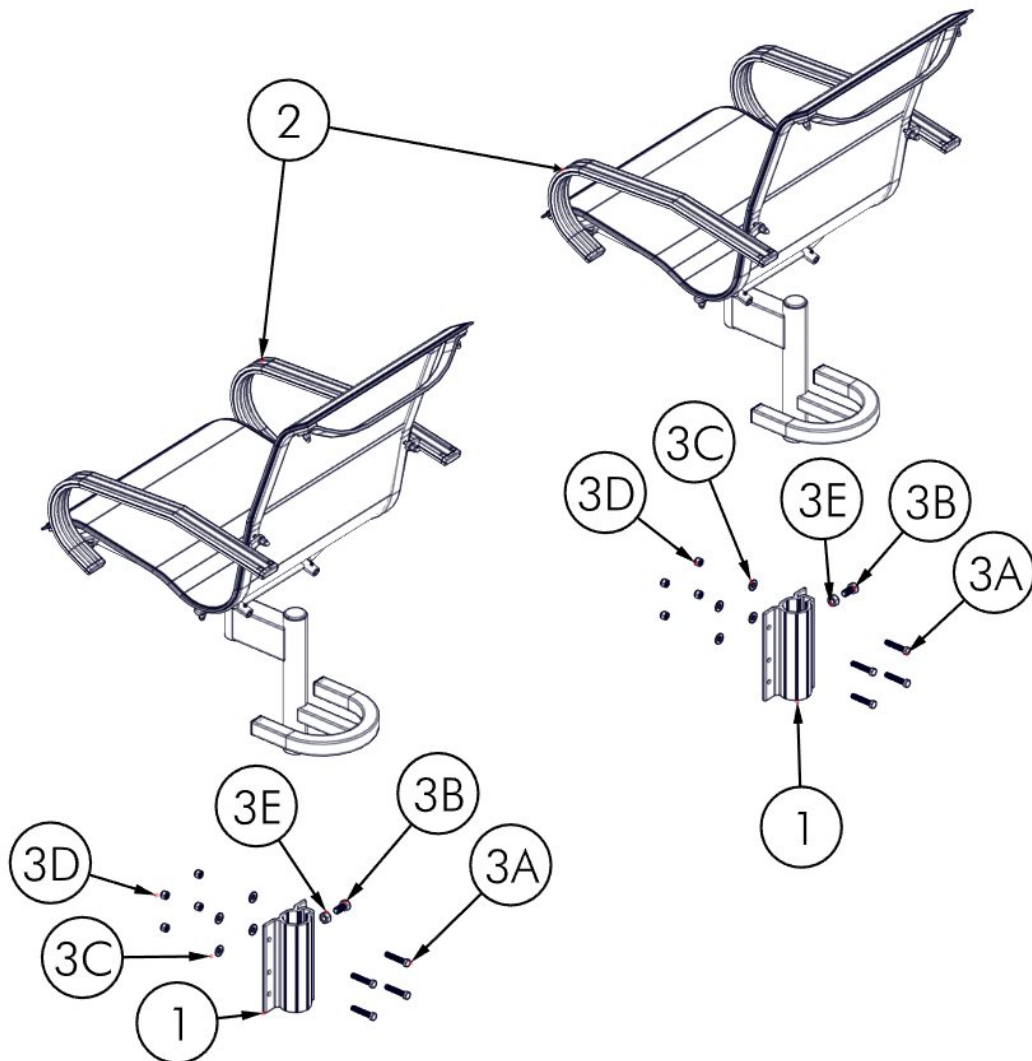
REFER TO THE FURNITURE INSTRUCTIONS  
FOR INSTALLATION OF CHAIRS & TABLE.

### TOOLS REQUIRED

- (2) 9/16" SOCKETS/WRENCHES
- 3/4" SOCKET WRENCH
- TAPE MEASURE
- TORQUE WRENCH
- FRAMING SQUARE
- MARKER
- CORDLESS DRILL
- 13/32" DRILL BIT
- HAMMER
- CENTER PUNCH

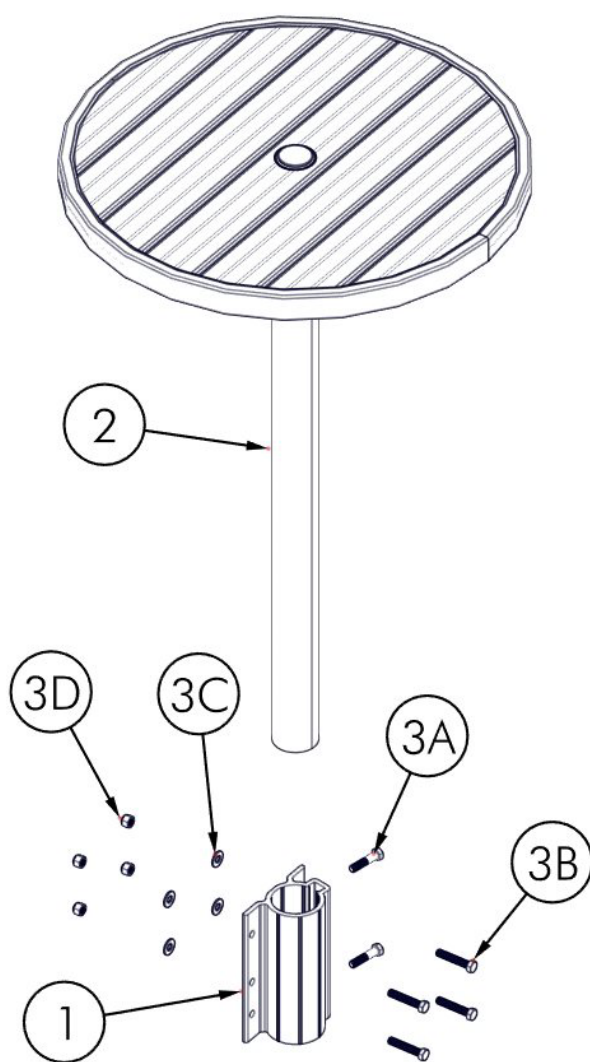
## BILL OF MATERIALS/EXPLODED VIEW

P/N 510-00458-00	CHAIRS, STANDARD SECTIONAL DOCK (2 CHAIRS)		
NUMBER	PART NUMBER	DESCRIPTION	QTY
	210-07019-00	POCKETS, CHAIR (2) (INCLUDES ITEM #1)	1
1	002-07019-00	POCKET, CHAIR MOUNT	2
2	310-00425-00	KIT, DOCK CHAIRS (PAIR)	1
3	510-02368-00	HDWR, STD. SCTN'L. CHAIR MTG.	1
3A	001-70111-00	HHCS, 3/8-16 X 2" 18-8 SS	8
3B	001-70205-00	HHCS, 1/2-13 X 1" SS 18-8	2
3C	001-71017-00	FLAT WASHER, 3/8" SAE SS 18-8	8
3D	001-76071-00	NUT, NYLOCK 3/8-16 ALUM.	8
3E	001-76350-00	NUT, 1/2-13 ALUM.	2



## BILL OF MATERIALS/EXPLODED VIEW

P/N 510-00459-00	TABLE, STANDARD SECTIONAL DOCK		
NUMBER	PART NUMBER	DESCRIPTION	QTY
	210-07020-00	POCKET, TABLE (1) (INCLUDES ITEM #1)	1
1	002-07020-00	POCKET, TABLE MOUNT	1
2	310-00430-00	KIT, DOCK TABLE	1
3	510-02369-00	HDWR, STD. SCTN'L. TABLE MTG.	1
3A	001-70110-00	HHCS, 3/8-16 X 1-3/4" 18-8 SS	2
3B	001-70111-00	HHCS, 3/8-16 X 2" 18-8 SS	4
3C	001-71017-00	FLAT WASHER, 3/8" SAE SS 18-8	4
3D	001-76071-00	NUT, NYLOCK 3/8-16 ALUM.	4

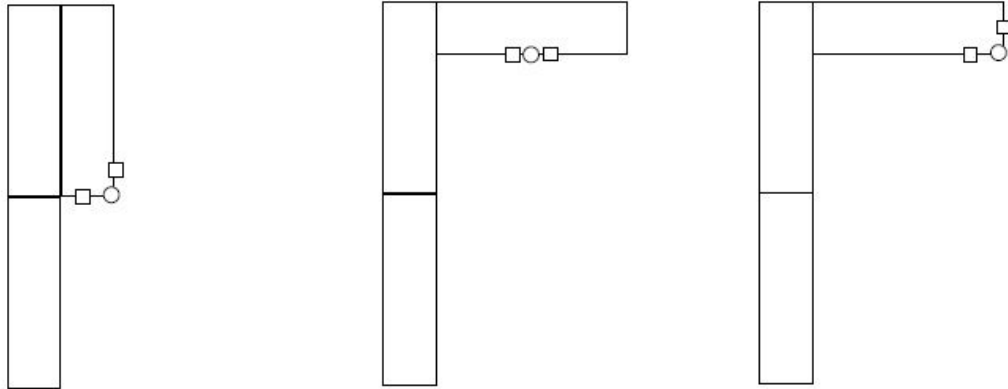


## RECOMMENDED INSTALLATION LAYOUTS

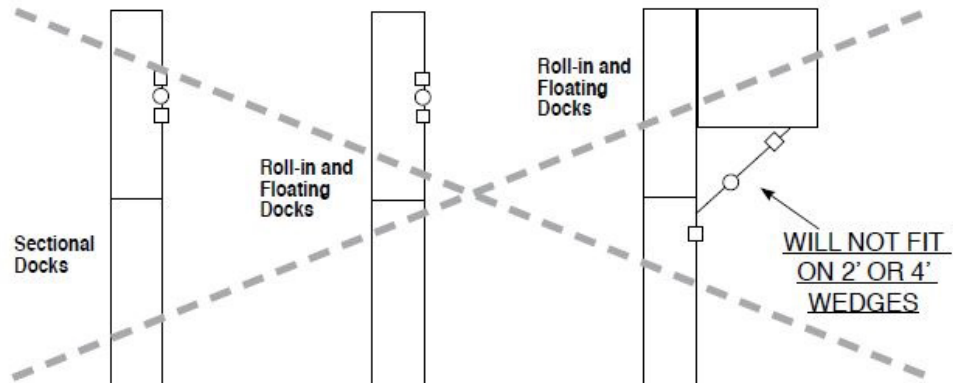
REFER TO THE IMAGES BELOW FOR THE TYPE OF DOCK YOU ARE INSTALLING THE FURNITURE ON TO DETERMINE WHICH LAYOUT IS BEST FOR YOUR CONFIGURATION. **NOTE: THERE ARE SEVERAL CONFIGURATIONS THAT ARE NOT RECOMMENDED.**

**WARNING: ENSURE THAT SAFETY QUICK CONNECTS ARE USED ON ROLL-IN AND SECTIONAL DOCKS SO THE DOCK SECTIONS DO NOT SEPARATE**

### RECOMMENDED SAMPLE SECTIONAL DOCK LAYOUTS



### NOT RECOMMENDED LAYOUT FOR FLOATING, ROLL-IN OR SECTIONALS



## ASSEMBLY

FIRST, DETERMINE WHERE THE FURNITURE WILL BE INSTALLED ON THE DOCK SYSTEM. START WITH THE TABLE POCKET. USING A FRAMING SQUARE, MARK A VERTICAL LINE ACROSS THE TOP AND BOTTOM SERRATIONS (THESE SERRATIONS ARE 3" APART AND ARE INTENDED TO ACT AS A HOLE SPACING REFERENCE). MARK A SECOND LINE 4-3/16" FROM THE FIRST LINE. USE A HAMMER AND CENTER PUNCH TO MAKE A DIMPLE FOR THE DRILL BIT. THIS HELPS PREVENT THE DRILL FROM WANDERING. KEEP THE DRILL BIT PERPENDICULAR TO THE DOCK FRAME WHILE DRILLING (FIGURE 1.1). INSERT (4) 3/8" X 2" BOLTS INTO THE POCKET AND MOUNT THE POCKET ONTO THE DOCK SIDE (FIGURE 1.2).

FIGURE 1.1

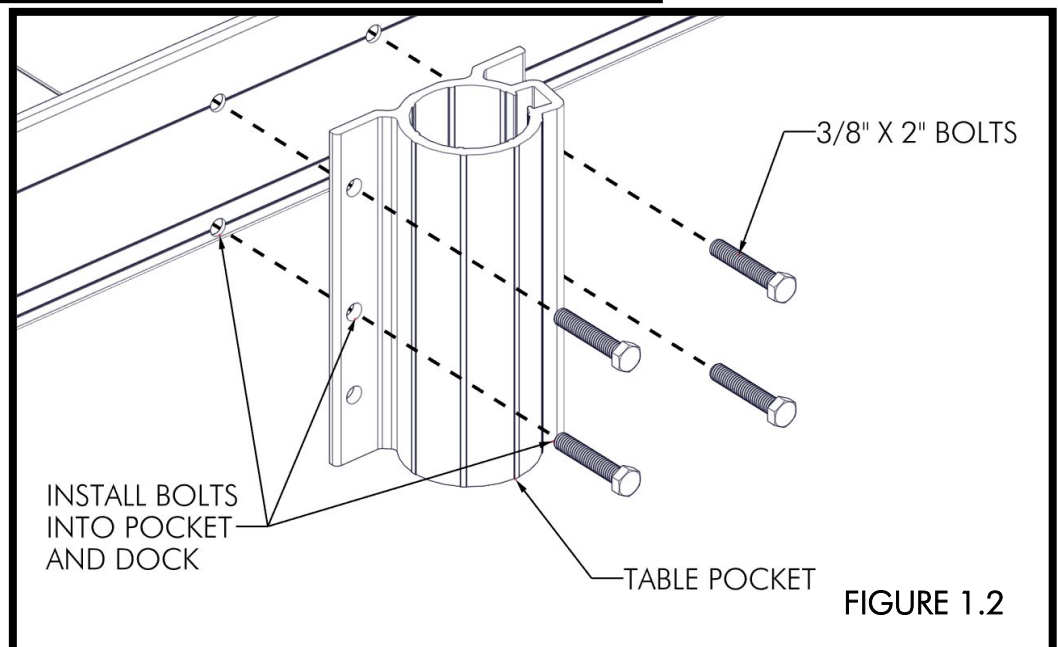
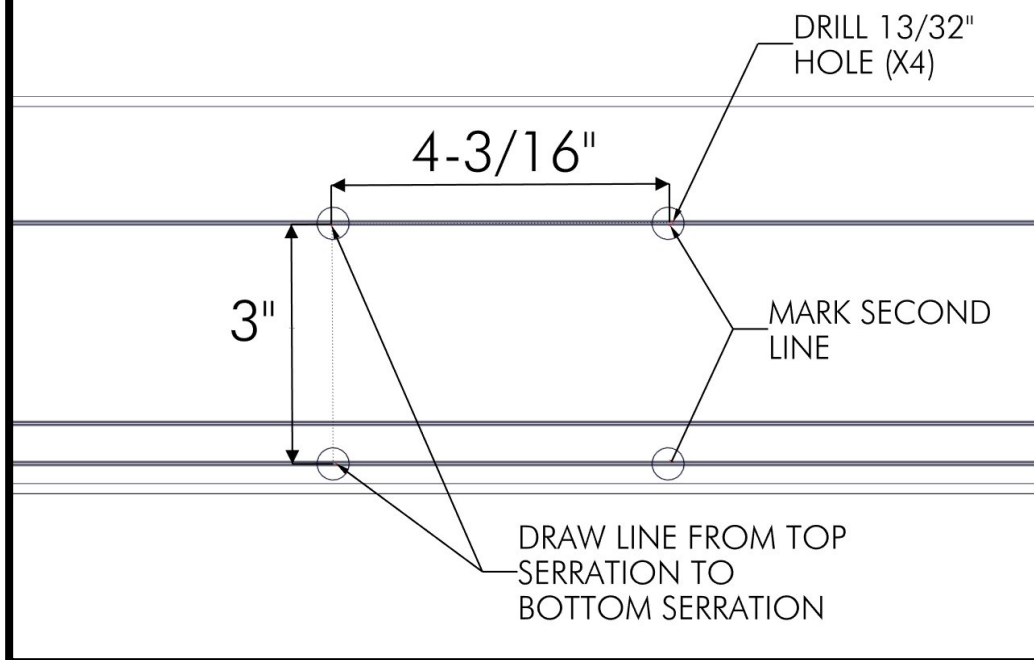
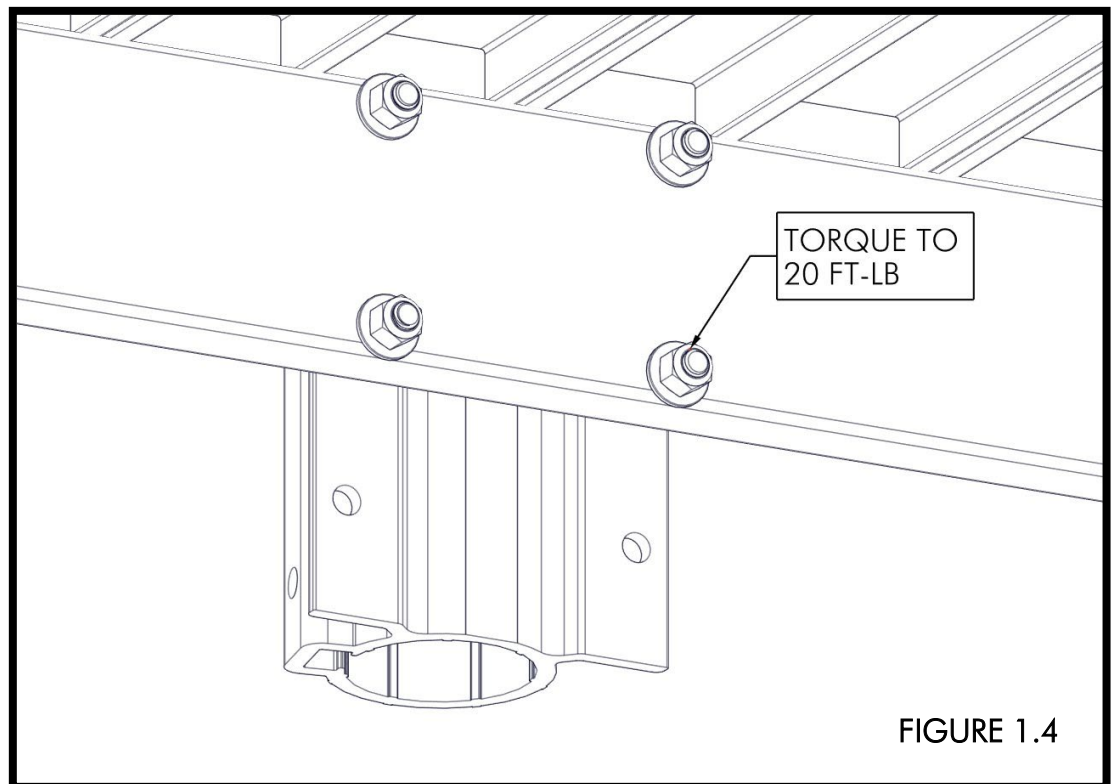
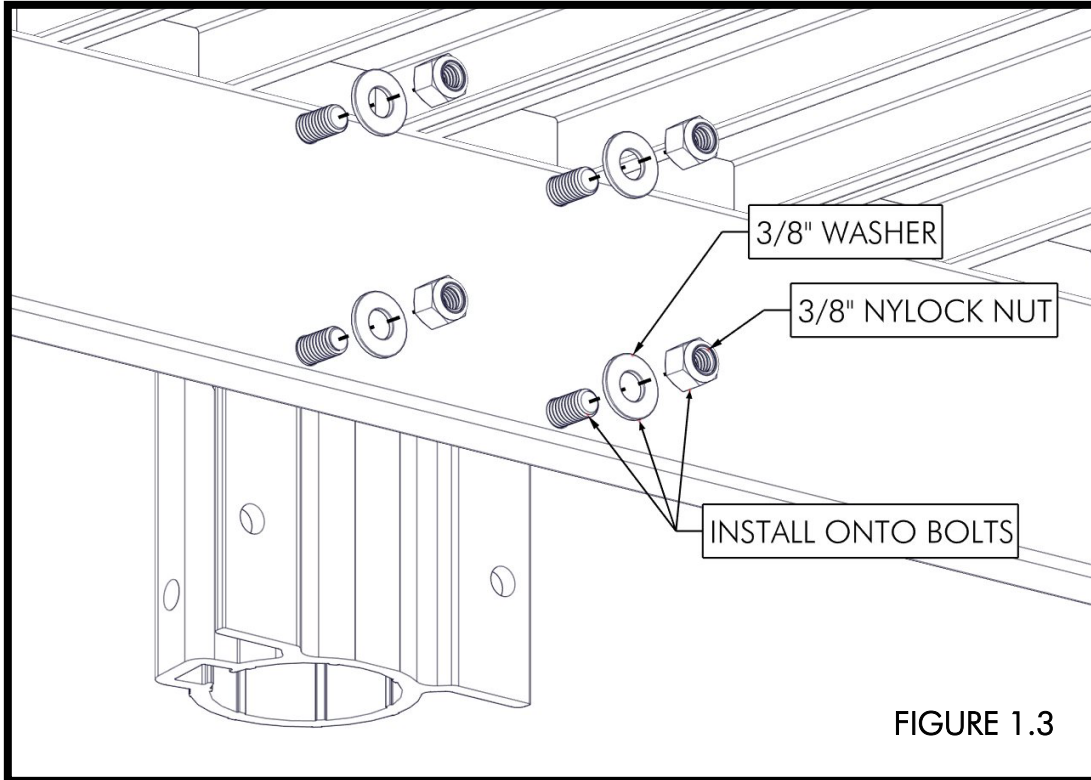


FIGURE 1.2

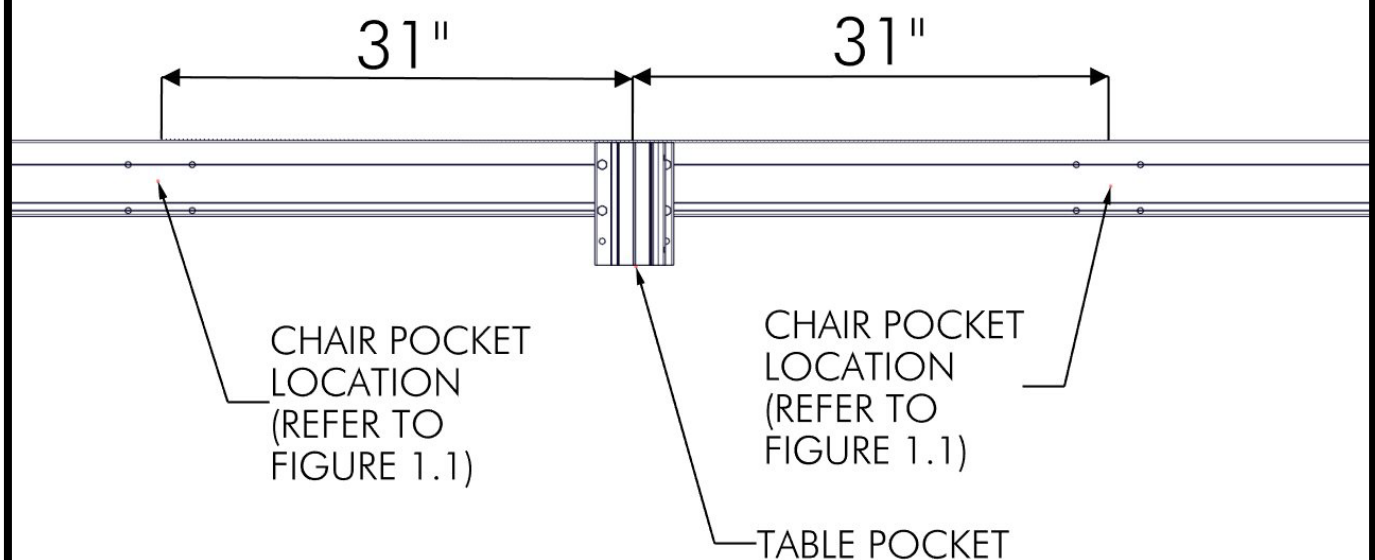
PLACE A 3/8" WASHER AND 3/8" NYLOCK NUT ONTO EACH BOLT (FIGURE 1.3). ENSURING THAT THE POCKETS ARE PERPENDICULAR TO THE DOCK SURFACE, TORQUE THE NUTS TO 20 FT-LB (FIGURE 1.4).





WHILE REFERRING TO FIGURE 1.1, REPEAT THIS PROCESS FOR THE (2) CHAIR POCKETS WHILE POSITIONING THEM 31" APART FROM THE TABLE POCKET, CENTER OF POCKET TO CENTER OF POCKET. THIS IS TO PREVENT THE CHAIR'S ARM RESTS FROM HITTING THE TABLE AND POSSIBLY DAMAGING EITHER THE TABLE OR CHAIRS (FIGURE 1.5). REFER TO THE FURNITURE INSTRUCTIONS ON INSTALLING THE CHAIRS AND TABLE.

FIGURE 1.5



NOTE:  
IF THE TABLE WILL NOT BE INSTALLED, THE CHAIR POCKETS MUST BE INSTALLED  
A MINIMUM OF 30" APART

