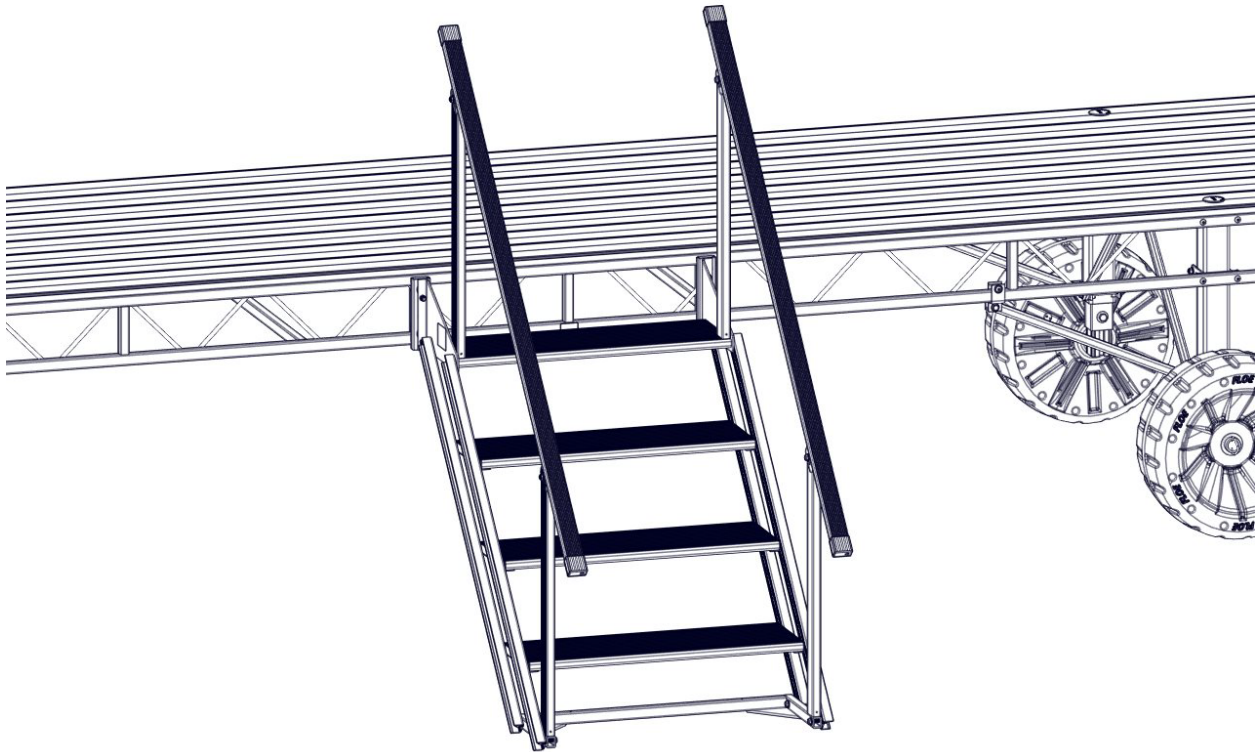


# FLOE STANDARD ROLL-IN DOCK STEP ATTACHMENT KIT ASSEMBLY INSTRUCTIONS



KIT P/N 510-02327-00



\*DOCK SECTION AND LEGS NOT INCLUDED

## **NOTE:**

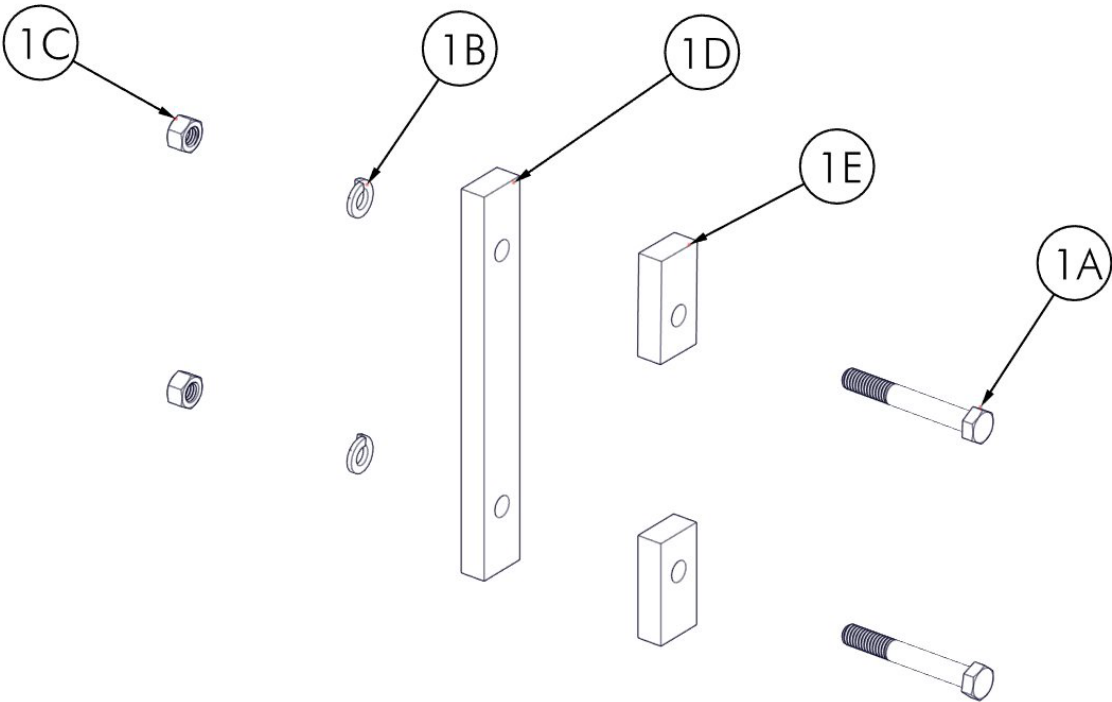
DOCK STEPS ARE SOLD SEPARATELY.  
REFER TO THE INSTRUCTIONS INCLUDED  
WITH THE KIT.

## TOOLS REQUIRED

- (2) 9/16" SOCKETS/WRENCHES
- TORQUE WRENCH
- TAPE MEASURE
- FRAMING SQUARE

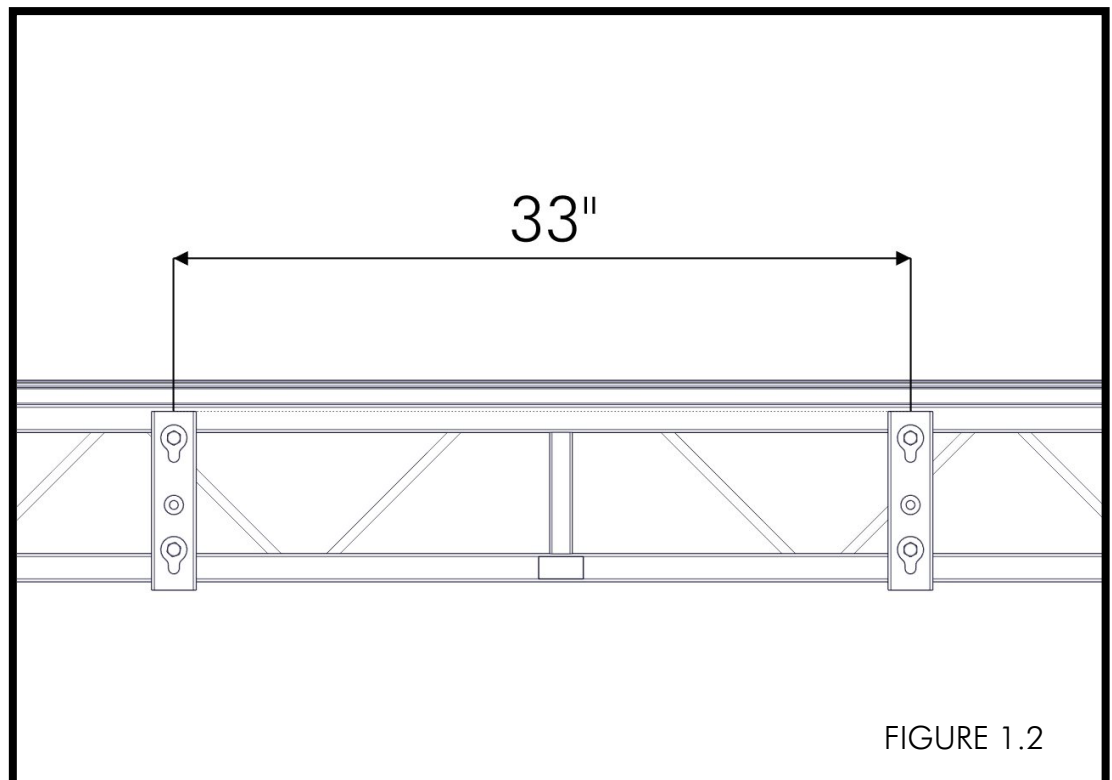
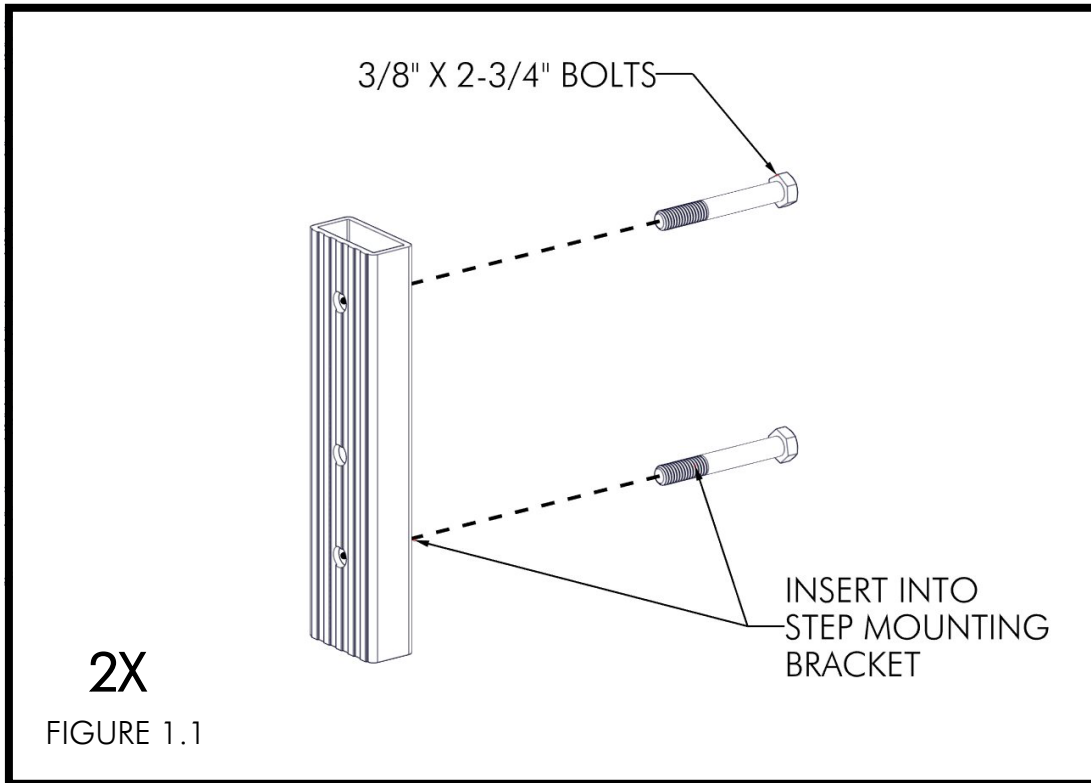
**BILL OF MATERIALS/EXPLODED VIEW**

P/N 510-02327-00	KIT, STEP MOUNTING HARDWARE STD. ROLL-IN		
NUMBER	PART NUMBER	DESCRIPTION	QTY
1A	001-70114-00	HHCS, 3/8-16 X 2-3/4" 18-8 SS	4
1B	001-71067-00	LOCK WASHER, 3/8" S/W SS 18-8	4
1C	001-76349-00	NUT, 3/8-16 ALUM.	4
1D	002-02203-00	PLATE, DOCK ACCESSORY	2
1E	002-02204-00	SPACER, DOCK ACCESSORY	4

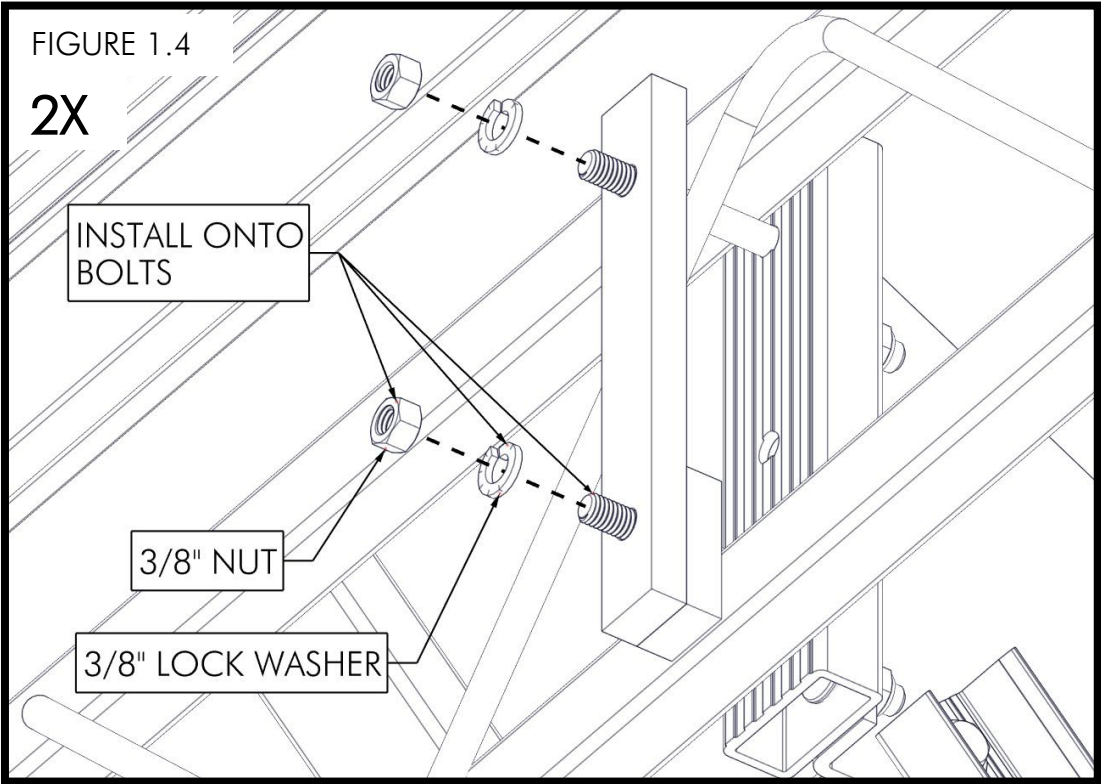
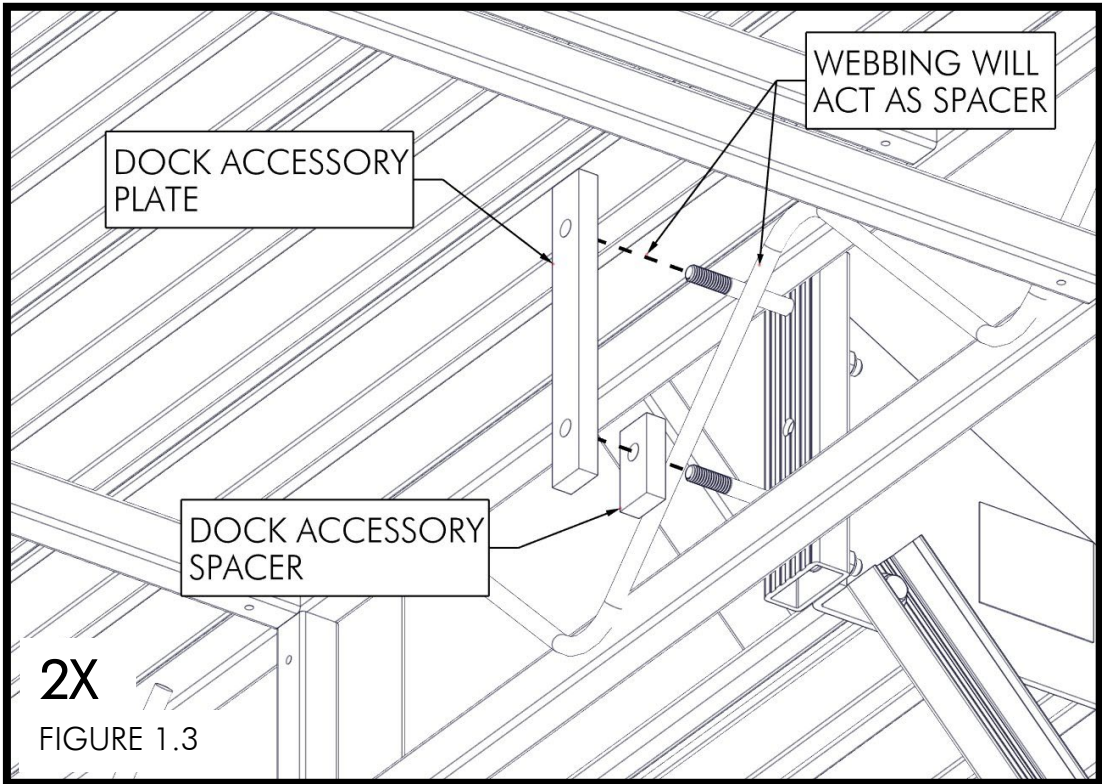


## ASSEMBLY

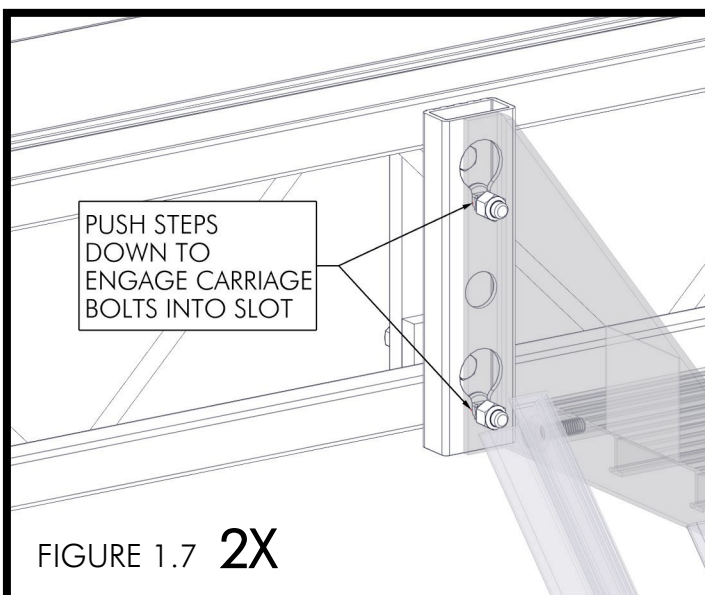
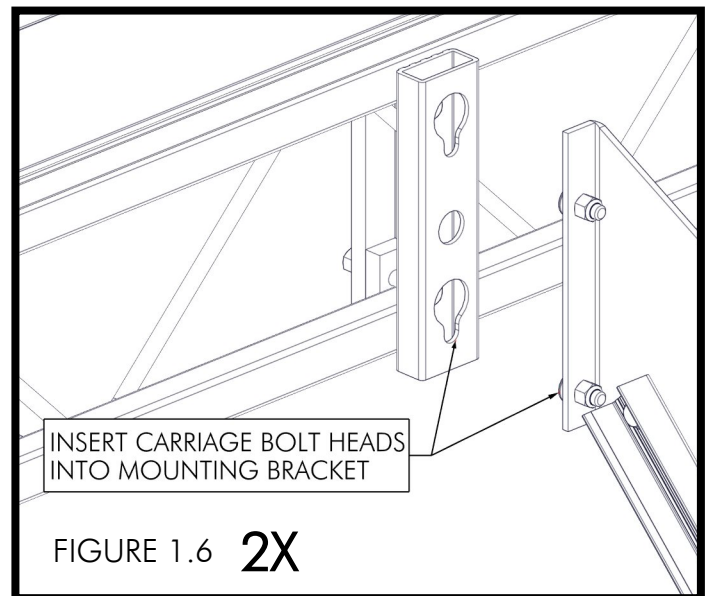
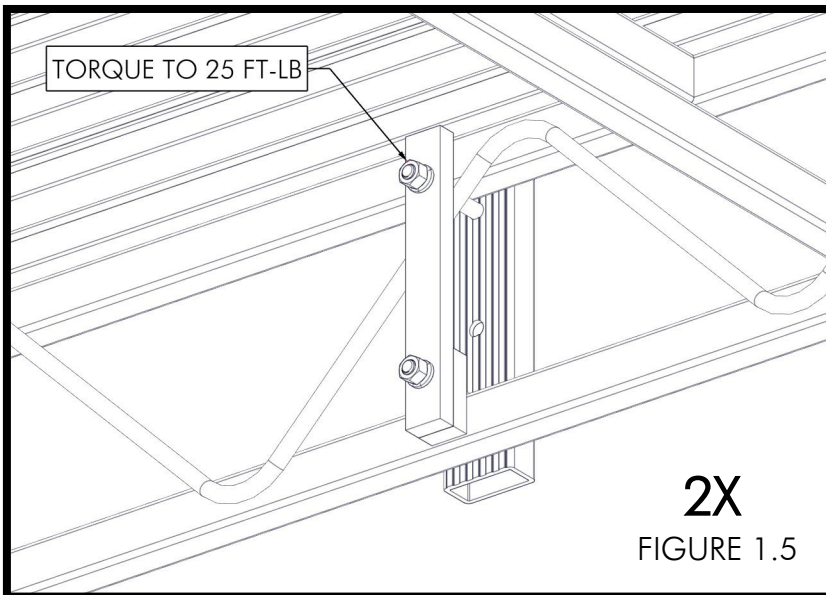
FIRST, DETERMINE WHERE THE DOCKS STEPS WILL BE INSTALLED ON THE DOCK SYSTEM. INSERT (2) 3/8" X 2-3/4" BOLTS INTO EACH DOCK STEP MOUNTING BRACKET (INLCUDED WITH DOCK STEPS) (FIGURE 1.1). POSITION MOUNTS 33" APART, CENTER TO CENTER (FIGURE 1.2).



INSTALL THE SPACERS AND DOCK PLATES ON THE BOLTS ON THE INSIDE OF THE DOCK FRAME (IF NECESSARY, WEBBING MAY BE USED AS A SPACER) (FIGURE 1.3). INSTALL A 3/8" LOCK WASHER AND 3/8" NUT ONTO EACH BOLT (FIGURE 1.4).



WHILE ENSURING THAT THE BRACKETS ARE SQUARE TO THE TOP OF THE DOCK, TORQUE ALL NUTS TO 25 FT-LB (FIGURE 1.5). INSERT THE HEADS OF THE CARRIAGE BOLTS PRE-INSTALLED ON THE DOCK STEPS INTO THE MOUNTING BRACKETS (FIGURE 1.6). PUSH DOWN ON THE STEPS TO ENSURE THAT THE CARRIAGE BOLTS ARE ENGAGED INTO THE SLOTS IN THE MOUNTING BRACKET (FIGURE 1.7).



**NOTES**

**NOTES**



