

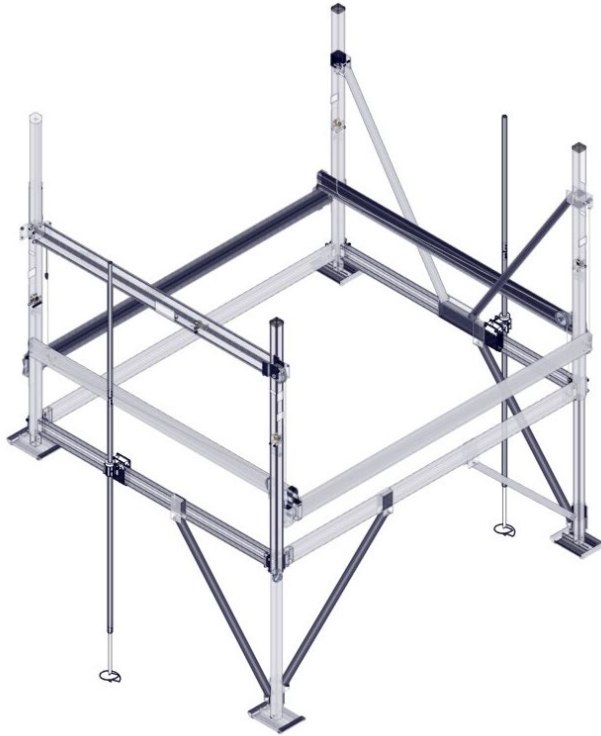
FLOE DEEP WATER ANCHORING SYSTEM

VSD3800-8000



ASSEMBLY INSTRUCTIONS

KIT P/N 512-00052-00, 512-00053-00



IMPORTANT

**DO NOT USE AN IMPACT
OR CORDLESS DRILL TO
INSTALL LIFT ANCHORS.**

TOOLS REQUIRED

- (2) 9/16" SOCKETS/WRENCHES
- 1 1/8" SOCKET (6 POINT ONLY)
- 1/2" DRIVE RATCHET
- TORQUE WRENCH
- TAPE MEASURE
- 5/32 HEX BIT SOCKET

*LIFT NOT INCLUDED

STORAGE DISCLAIMER

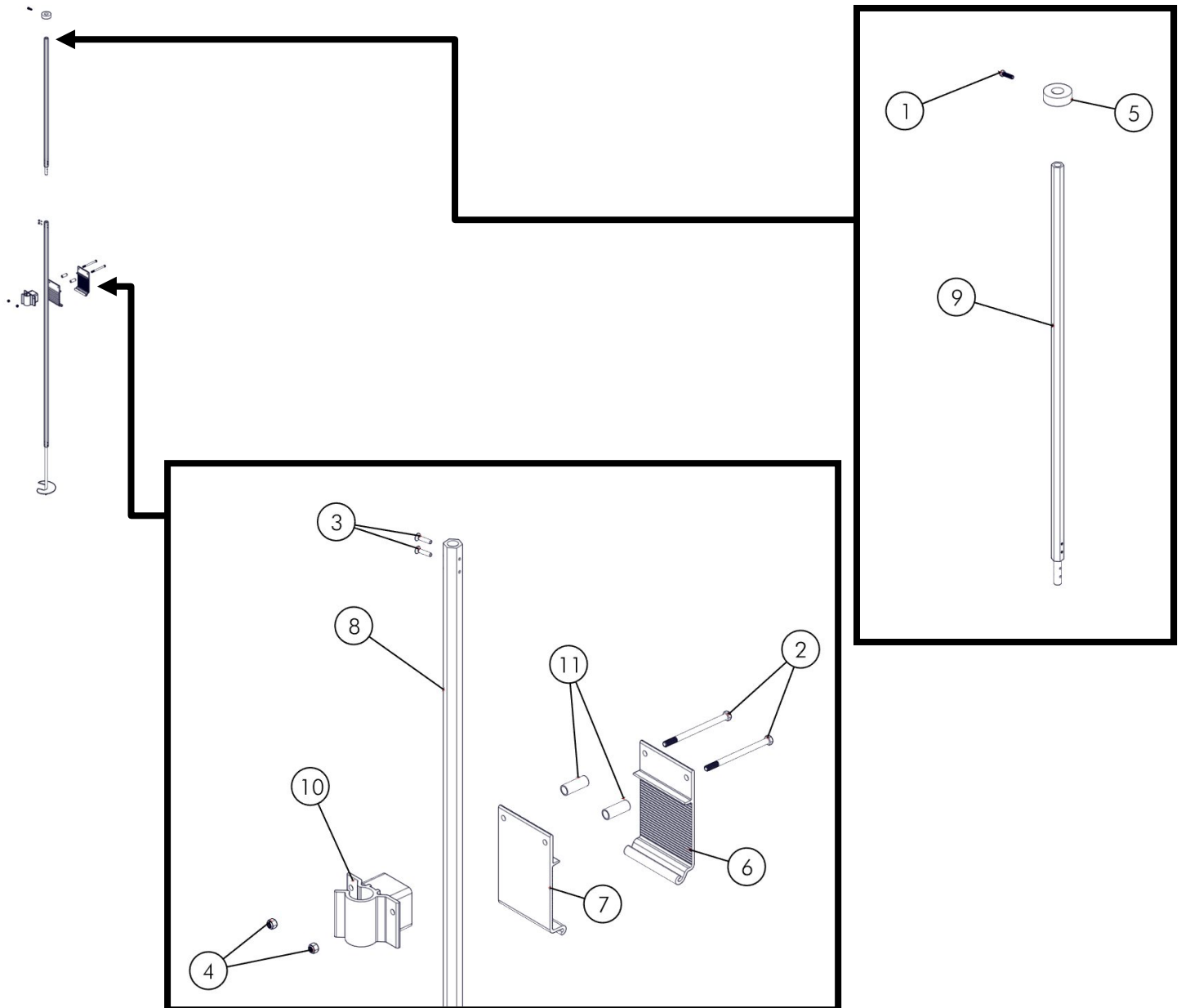
**WHEN STORING THE ANCHORING SYSTEM, THE MAIN TUBE WITH AUGER
MUST BE CLEANED THOROUGHLY OF ANY DEBRIS (MUD, SAND, ETC.) AND
PLACED UPSIDE DOWN (AUGER POINTING UPWARDS).**

INSTALLATION RECOMMENDATION

**TWO SETS OF ANCHORING SYSTEMS (FOUR TOTAL ANCHORS) MUST BE USED
WHEN INSTALLING A MAXIS CANOPY AND ARE RECOMMENDED ON FREE
STANDING CANOPIES IN HIGHER WIND CONDITION AREAS (ABOVE 30 MPH).**

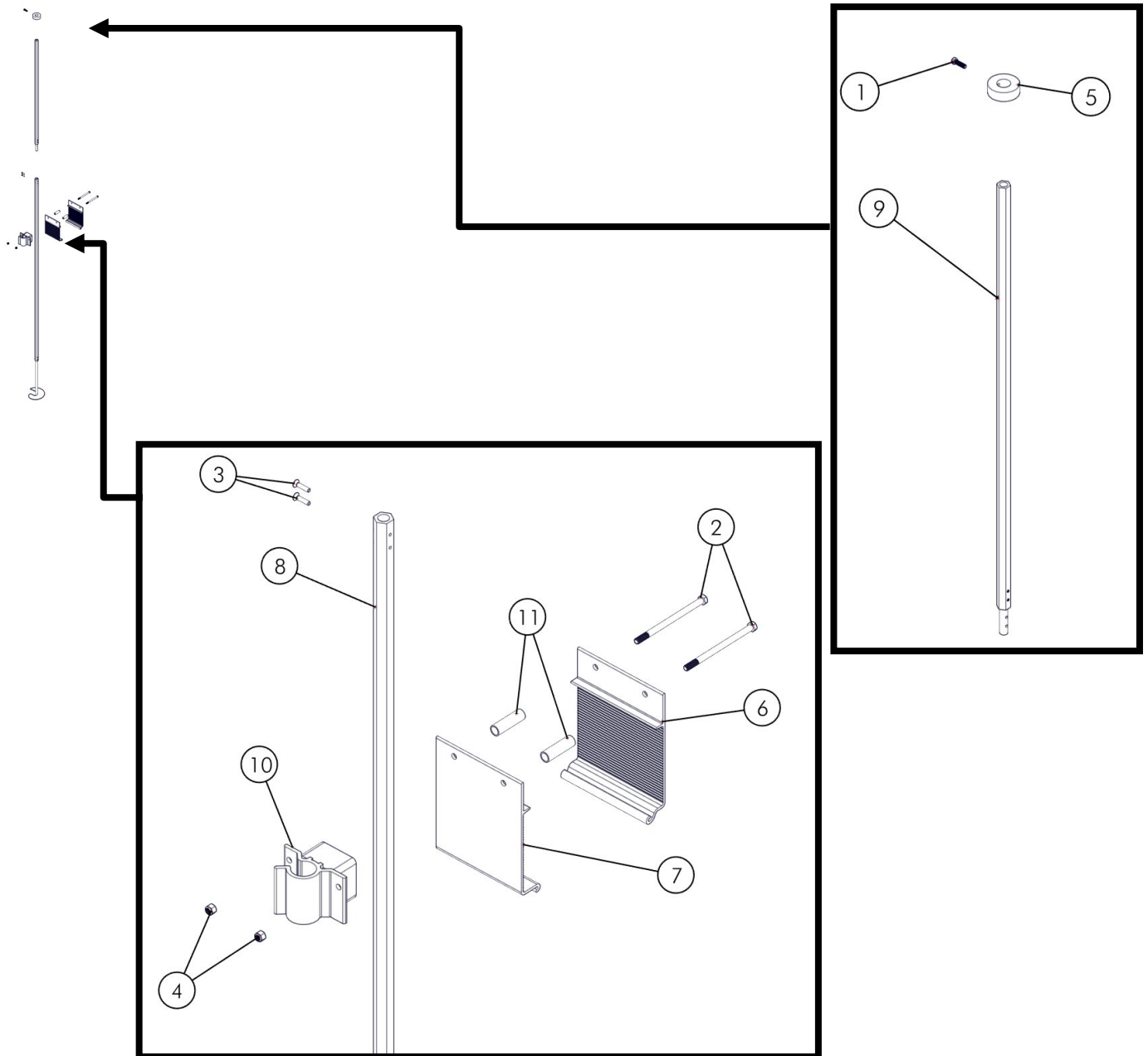
BILL OF MATERIALS/EXPLODED VIEW

P/N 512-00052-00	ANCHORING SYSTEM, 3800-5K DEEP		
NUMBER	PART NUMBER	QTY.	DESCRIPTION
1	001-70107-00	2	HHCS, 3/8-16 x 1 1/4" 18-8 ss
2	001-70124-00	4	HHCS, 3/8-16 x 5 1/2" 18-8 ss
3	001-72771-00	4	FHCS, 1/4-20 x 1-1/8" 18-8 ss
4	001-76071-00	4	NUT, NYLOCK 3/8-16 ALUM.
5	002-00198-00	2	SET COLLAR, ANCHORING SYSTEM
6	002-00241-00	2	CLAMP, ANCHORING SYSTEM (FEMALE) SMALL
7	002-00242-00	2	CLAMP, ANCHORING SYSTEM (MALE) SMALL
8	111-00504-00	2	ASS'Y, BOAT LIFT ANCHOR DEEP
9	111-00505-00	2	ASS'Y, DEEP WATER ANCHOR EXTENSION
10	111-00506-01	2	WELD'T, ANCHOR POCKET DEEP WATER
11	911-10803-00	4	TUBE, .72 OD x .065 - 1.875"

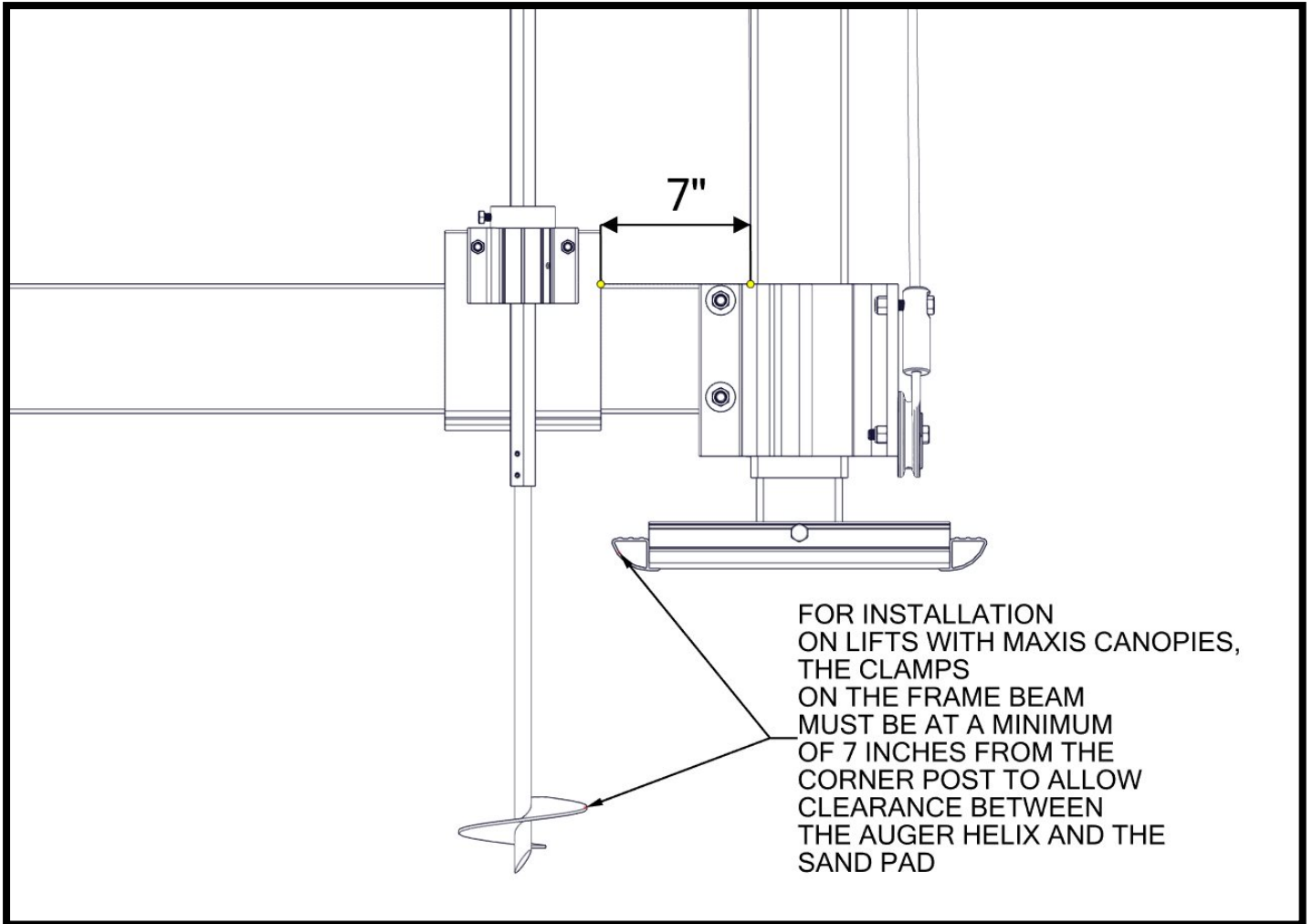


BILL OF MATERIALS/EXPLODED VIEW

P/N 512-00053-00		ANCHORING SYSTEM, 65-8K DEEP	
NUMBER	PART NUMBER	QTY.	DESCRIPTION
1	001-70107-00	2	HHCS, 3/8-16 x 1 1/4" 18-8 ss
2	001-70125-00	4	HHCS, 3/8-16 x 6" 18-8 ss
3	001-72771-00	4	FHCS, 1/4-20 x 1-1/8" 18-8 ss
4	001-76071-00	4	NUT, NYLOCK 3/8-16 ALUM.
5	002-00198-00	2	SET COLLAR, ANCHORING SYSTEM
6	002-00243-00	2	CLAMP, ANCHORING SYSTEM (FEMALE) LARGE
7	002-00244-00	2	CLAMP, ANCHORING SYSTEM (MALE) LARGE
8	111-00504-00	2	ASS'Y, BOAT LIFT ANCHOR DEEP
9	111-00505-00	2	ASS'Y, DEEP WATER ANCHOR EXTENSION
10	111-00506-01	2	WELD'T, ANCHOR POCKET DEEP WATER
11	911-10810-00	4	TUBE, .72 OD x .065 - 2.406"



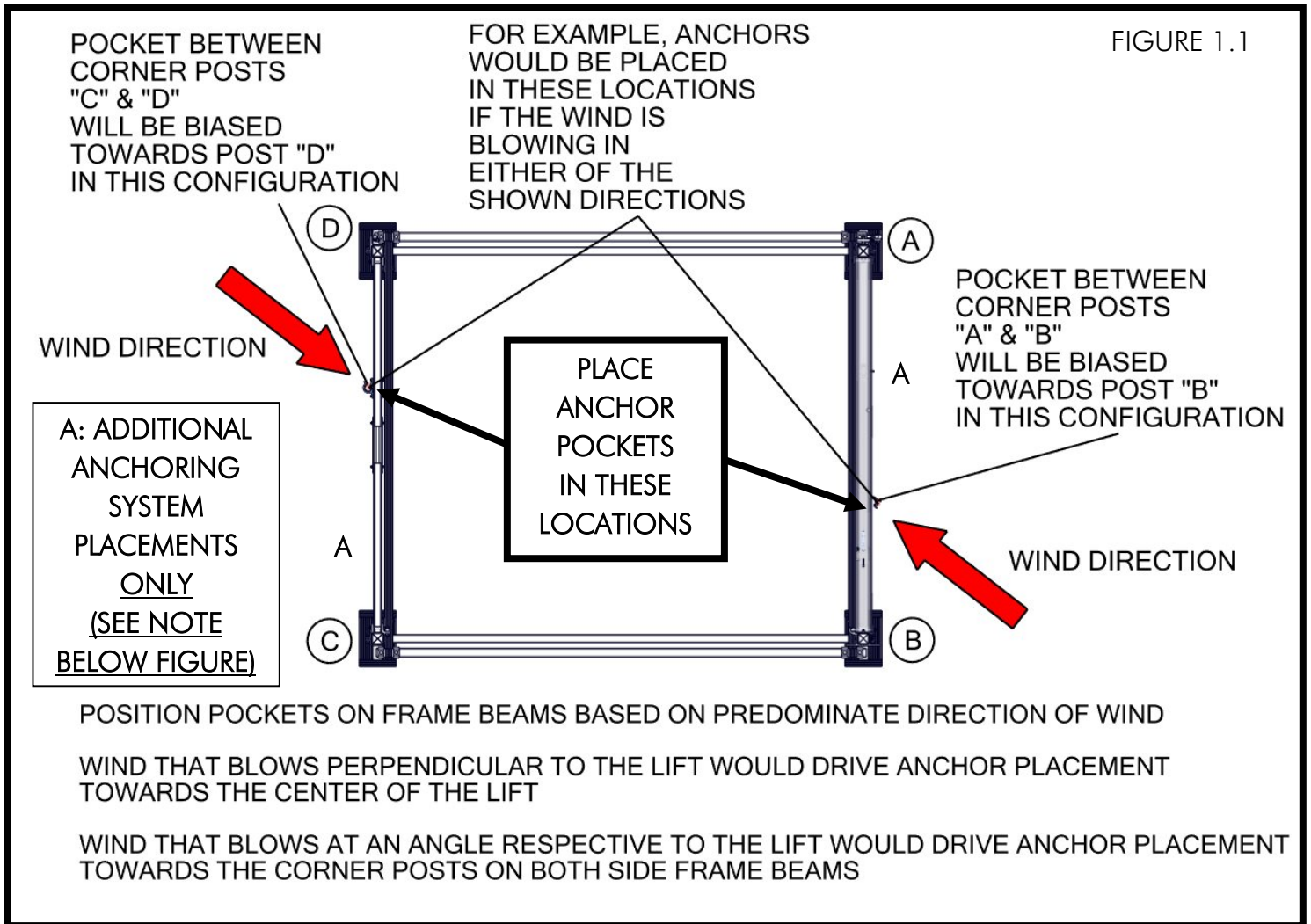
PLACEMENT (LIFTS WITH MAXIS CANOPIES)



STEP 1

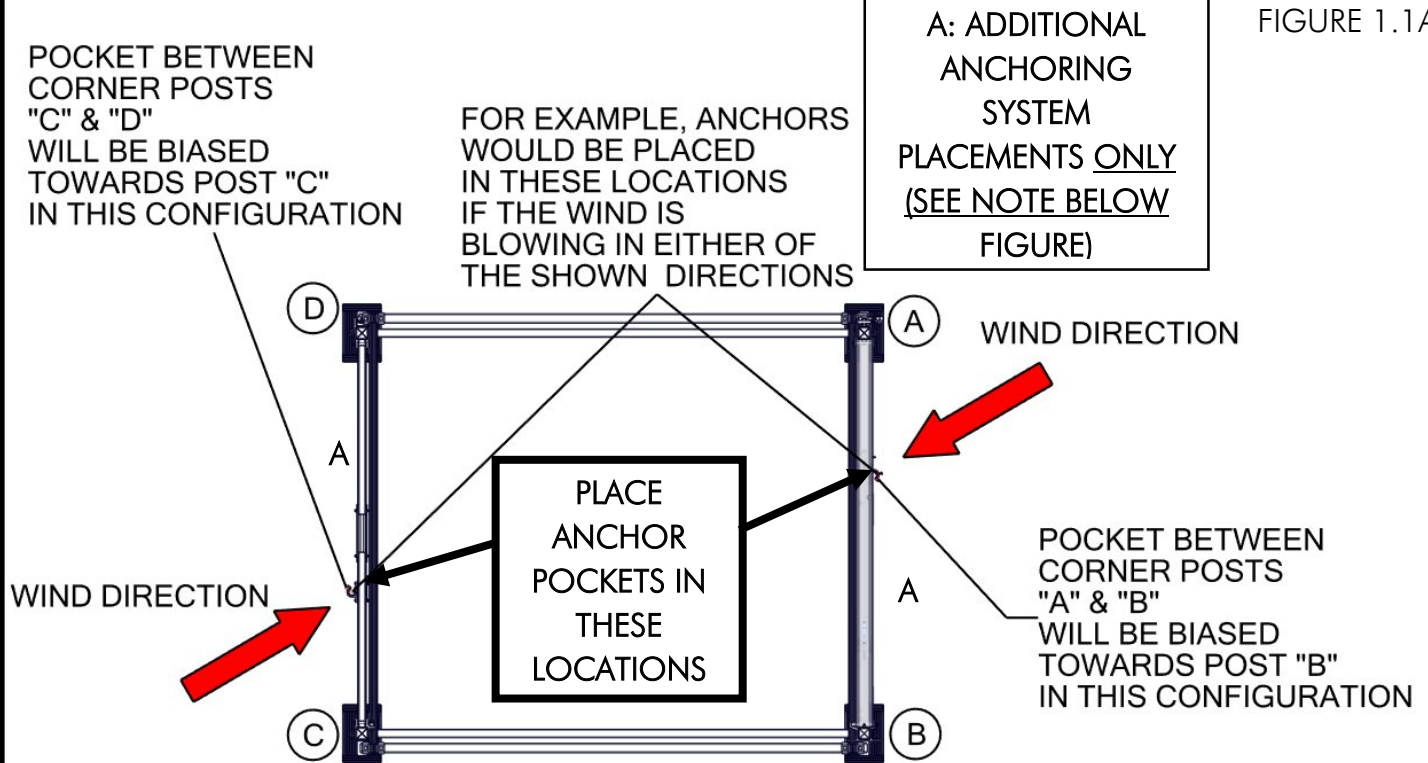
BEFORE INSTALLATION, SEE FIGURES 1.1 & 1.1A. PER THIS EXAMPLE, POCKETS WOULD BE PLACED IN THE SPECIFIED LOCATIONS. AN ADDITIONAL ANCHORING SYSTEM, IF REQUIRED, WOULD BE PLACED IN POSITIONS DENOTED BY "A".

INSTALLATION RECOMMENDATION: TWO SETS OF ANCHORING SYSTEMS (FOUR TOTAL ANCHORS) MUST BE USED WHEN INSTALLING A MAXIS CANOPY AND ARE RECOMMENDED ON FREE STANDING CANOPIES IN HIGHER WIND CONDITION AREAS (ABOVE 30 MPH).



NOTE: LIFTS IN LOCATIONS WHERE AVERAGE WIND CONDITIONS EXCEED 30 MPH WILL REQUIRE AN ADDITIONAL ANCHORING SYSTEM KIT. THIS ADDITIONAL KIT WOULD BE MOUNTED IN THE DENOTED (A) POSITIONS IN FIGURE 1.1 AND ADJUSTED SIMILARLY TO THE OTHER ANCHORS.

FIGURE 1.1A



POSITION POCKETS ON FRAME BEAMS BASED ON PREDOMINATE DIRECTION OF WIND

WIND THAT BLOWS PERPENDICULAR TO THE LIFT WOULD DRIVE ANCHOR PLACEMENT TOWARDS THE CENTER OF THE LIFT

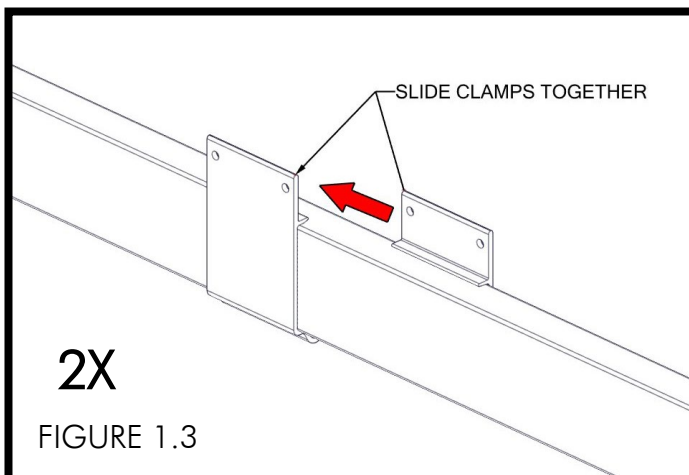
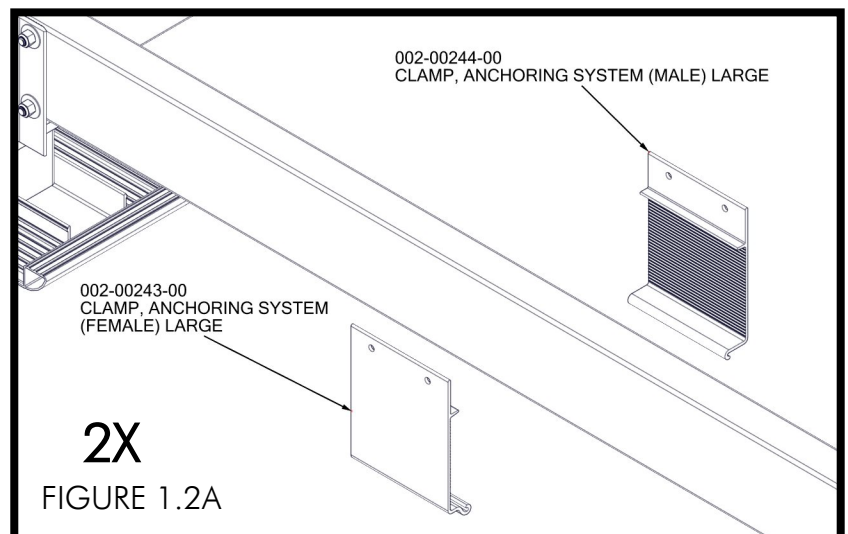
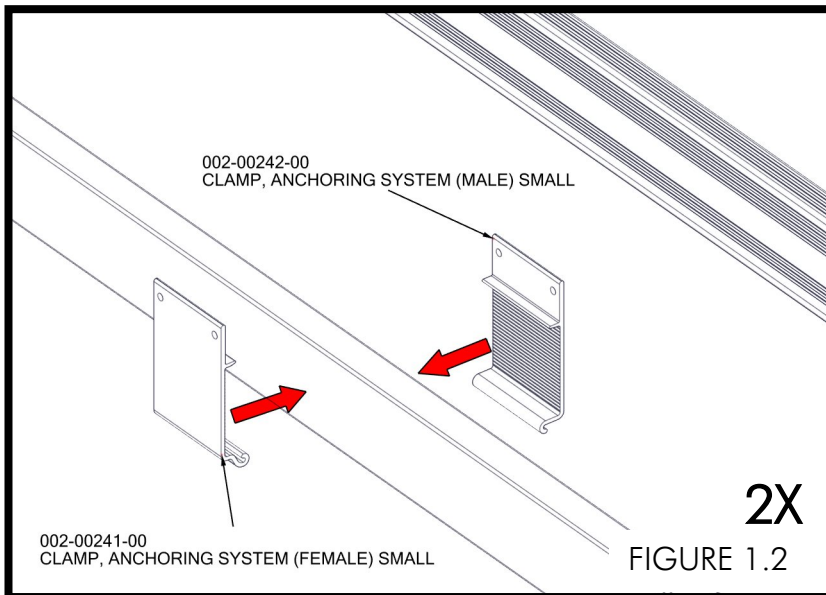
WIND THAT BLOWS AT AN ANGLE RESPECTIVE TO THE LIFT WOULD DRIVE ANCHOR PLACEMENT TOWARDS THE CORNER POSTS ON BOTH SIDE FRAME BEAMS

NOTE: LIFTS IN LOCATIONS WHERE AVERAGE WIND CONDITIONS EXCEED 30 MPH WILL REQUIRE AN ADDITIONAL ANCHORING SYSTEM KIT. THIS ADDITIONAL KIT WOULD BE MOUNTED IN THE DENOTED (A) POSITIONS IN FIGURE 1.1A AND ADJUSTED SIMILARLY TO THE OTHER ANCHORS.

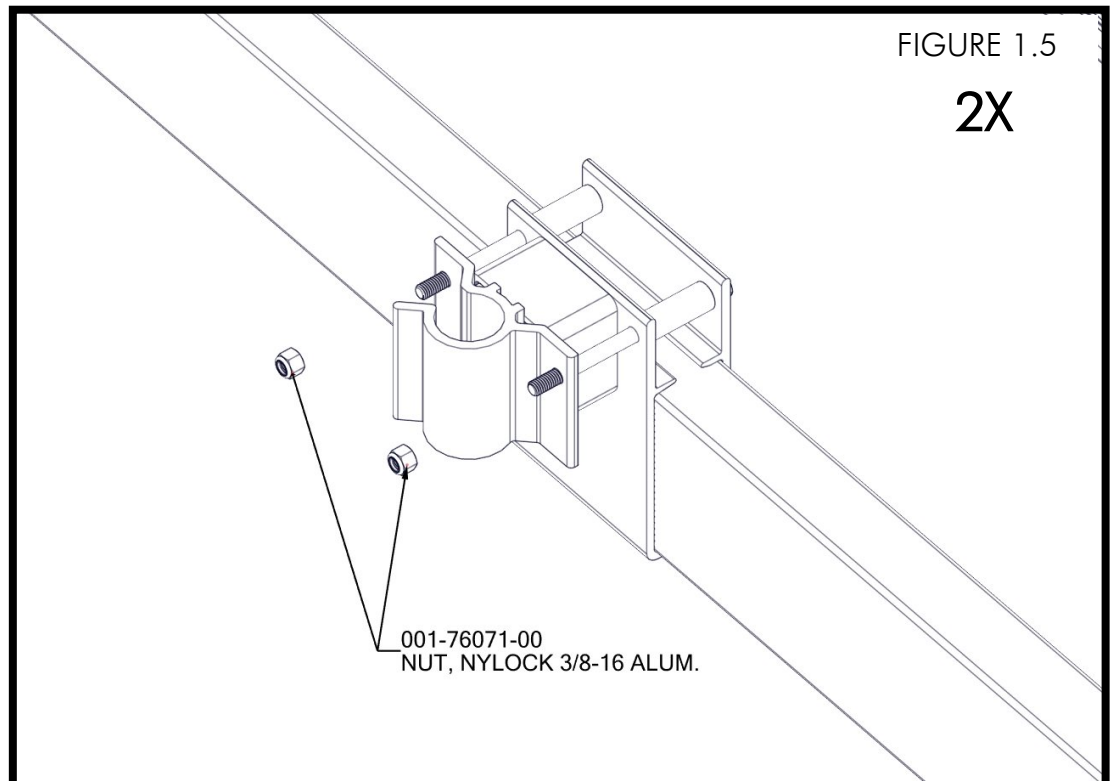
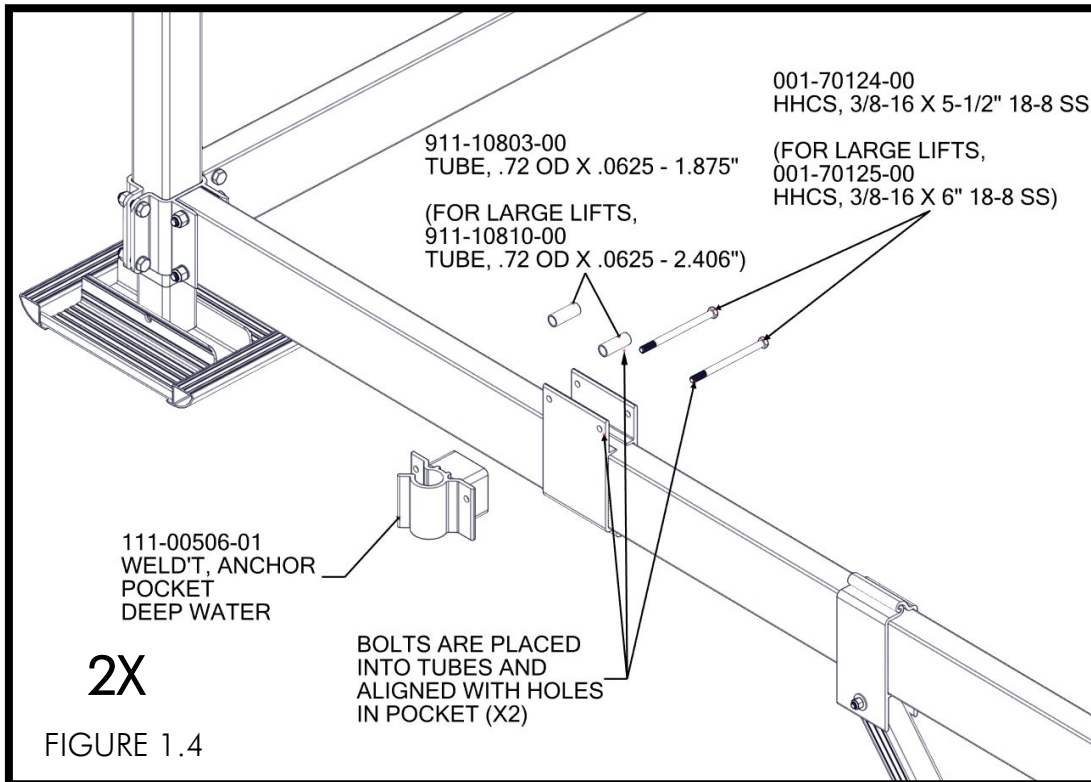
INSTALLATION RECOMMENDATION

TWO SETS OF ANCHORING SYSTEMS (FOUR TOTAL ANCHORS) MUST BE USED WHEN INSTALLING A MAXIS CANOPY AND ARE RECOMMENDED ON FREE STANDING CANOPIES IN HIGHER WIND CONDITION AREAS (ABOVE 30 MPH).

PLACE CLAMPS ONTO SIDE FRAME BEAMS BETWEEN CORNER POSTS "A" & "B" AND CORNER POSTS "C" & "D" (SMALL LIFTS: FIGURE 1.2, LARGE LIFTS: FIGURE 1.2A). SLIDE CLAMPS TOGETHER (FIGURE 1.3).

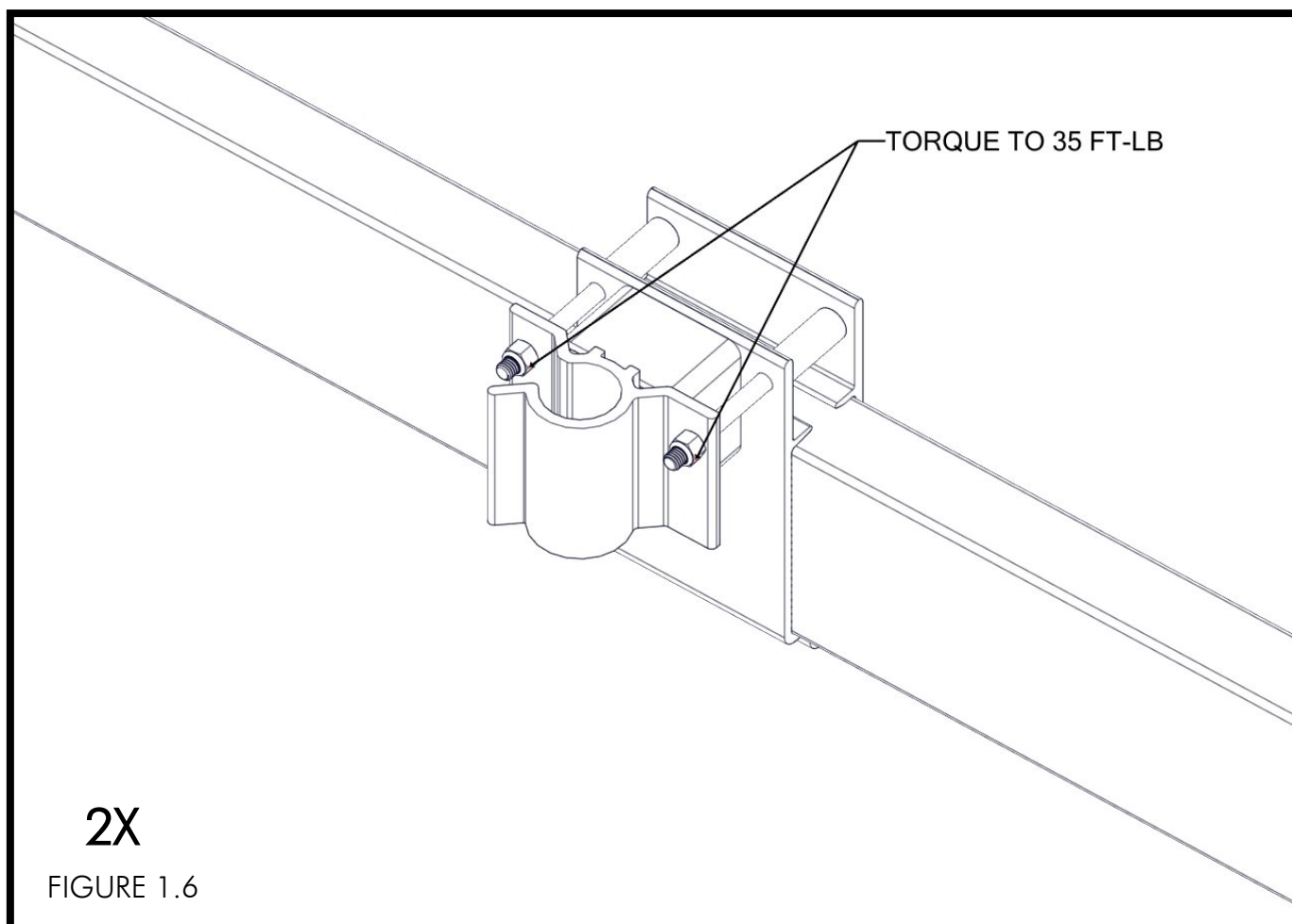


ATTACH ANCHOR POCKET TO CLAMPS USING (2) 3/8" x 3 1/2" BOLTS AND (2) 1 7/8" LONG TUBES. BOLTS ARE PLACED INTO TUBES AND ALIGNED WITH HOLES (FIGURE 1.4). FOR LARGE LIFTS, USE (2) 3/8" X 3 3/4" BOLTS. PLACE 3/8" NUTS ON BOLTS (FIGURE 1.5).



ONCE PLACEMENT IS FINALIZED, TORQUE TO 35 FT-LBS (FIGURE 1.6).

IMPORTANT NOTE: POCKET PLACEMENT MAY HAVE TO BE ADJUSTED BASED UPON POSSIBLE OBSTRUCTIONS ON LAKE BOTTOM OR ABILITY TO DRIVE AUGER TO FULL DEPTH.



STEP 2

INSTALL THE SPLICE END OF THE ANCHOR EXTENSION INTO THE SHAFT OF THE ANCHOR ASSEMBLY (FIGURE 2.1). TURN EXTENSION TO ALIGN THE HOLES IN THE SPLICE WITH THE HOLES IN THE ANCHOR ASSEMBLY SHAFT. SECURE THE EXTENSION TO THE ASSEMBLY WITH (2) 1/4-20 X 1 1/8" FLAT HEAD BOLTS (FIGURE 2.2). TORQUE BOLTS TO MAX 10 FT-LBS (FIGURE 2.3)

FIGURE 2.1

2X



FIGURE 2.2

2X

001-72771-00
FHCS, 1/4-20 X 1 1/8" 18-8 SS

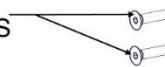


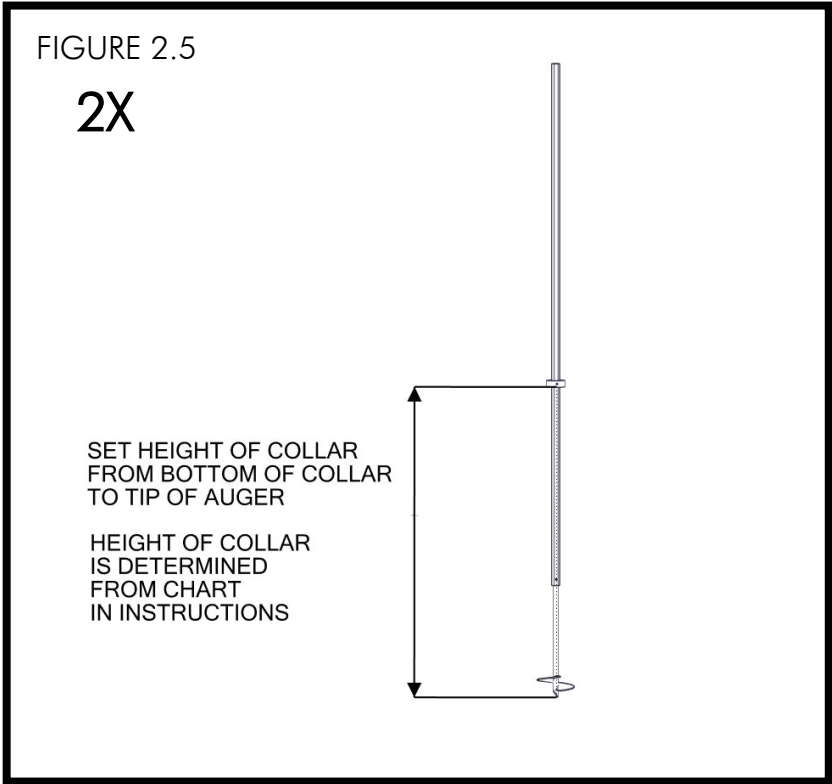
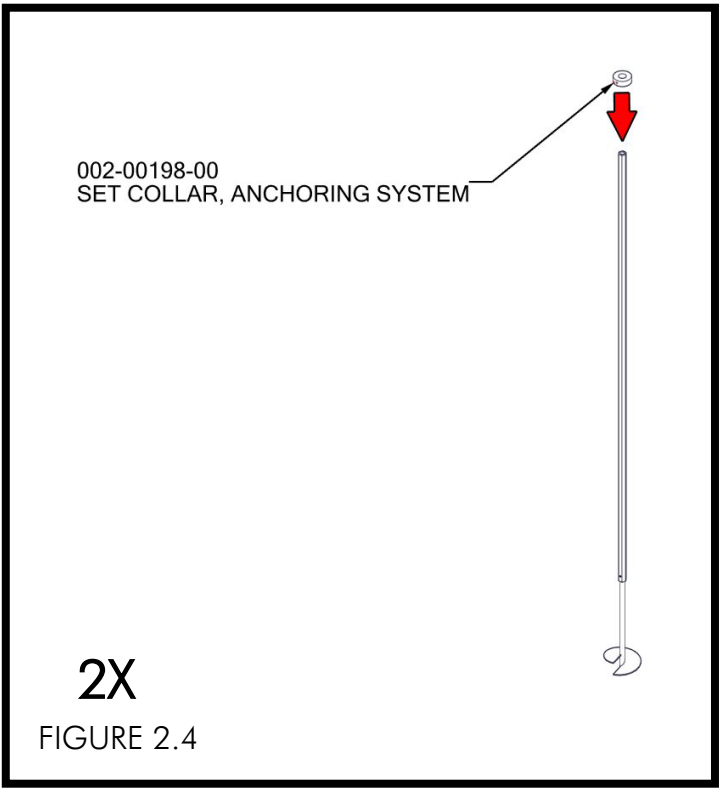
FIGURE 2.3

2X

TORQUE TO 10 FT-LB MAX



SLIDE COLLAR OVER ANCHOR TUBE (FIGURE 2.4). SET HEIGHT OF COLLAR BY TAKING THE MEASUREMENT FROM THE BOTTOM OF COLLAR TO THE TIP OF THE AUGER (FIGURE 2.5). SEE TABLES ON SHEETS 14-17 FOR COLLAR HEIGHT MEASUREMENTS AND FIGURE ON SHEET 13 FOR ADDITIONAL GUIDELINES.



ONCE POSITION IS SET, SECURE COLLAR TO HEX TUBE USING (1) 3/8" X 1 1/4" BOLT (FIGURE 2.6) AND TORQUE TO 20 FT-LBS (FIGURE 2.7).

FIGURE 2.6

2X

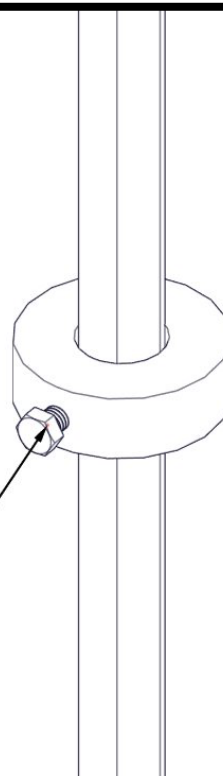
001-70107-00
HHCS, 3/8-16 x 1 1/4" 18-8 ss



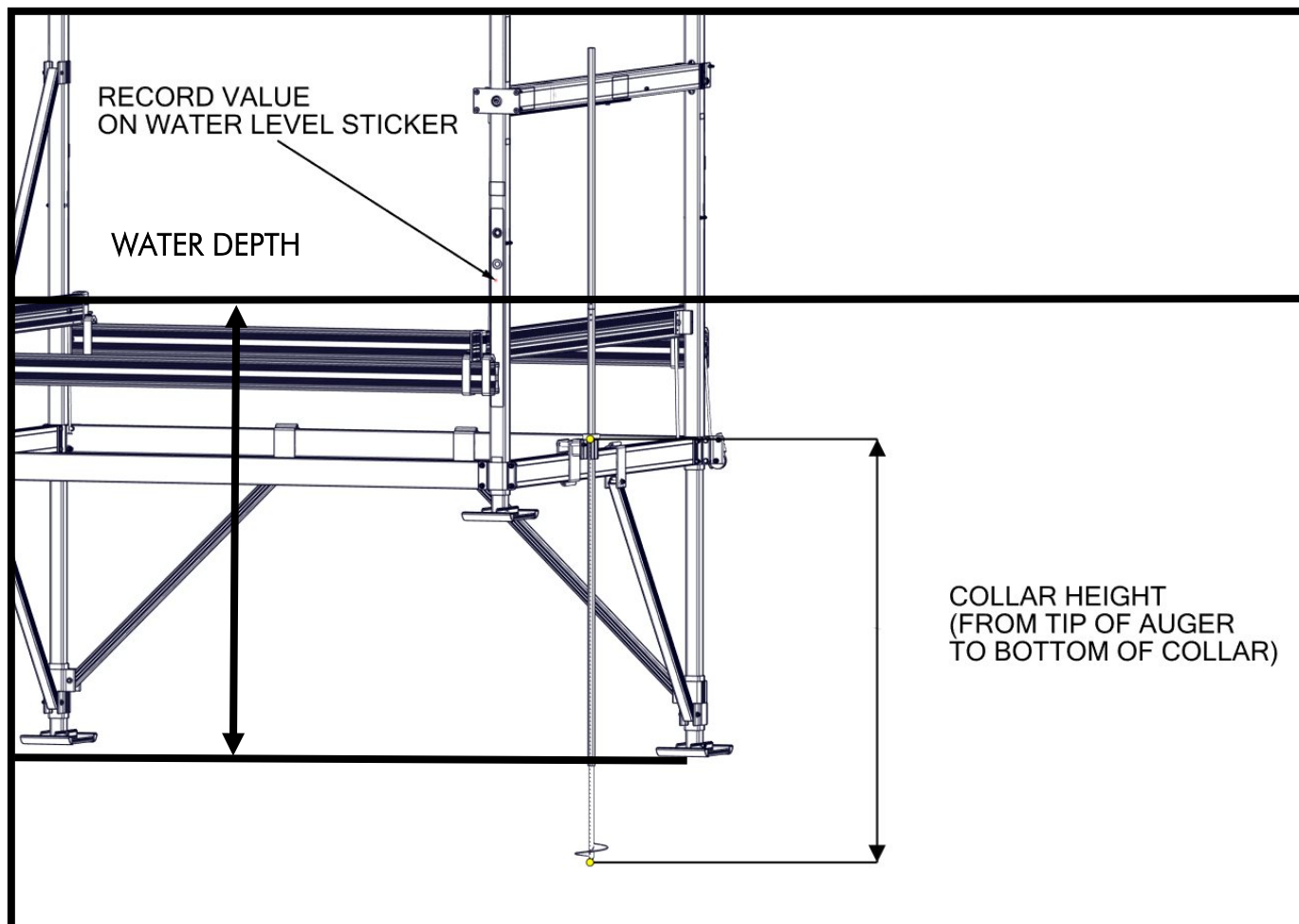
FIGURE 2.7

2X

TORQUE TO 20 FT-LBS



FIRST, MEASURE WATER DEPTH. THEN, RECORD MEASUREMENT ON WATER DEPTH STICKER. USE THESE VALUES ON THE TABLES ON SHEETS 14 & 15 FOR SMALL LIFTS OR SHEETS 16 & 17 FOR LARGE LIFTS.



TO DETERMINE COLLAR HEIGHT, THE FOLLOWING TABLES ON SHEETS 14 & 15 ARE USED FOR SMALL LIFTS. REFER TO FIGURE 2.2 AND SHEET 13 ON HOW TO MEASURE FOR COLLAR HEIGHT.
NOTE: STICKER HEIGHT IS OPTIMUM WATER LEVEL ONLY.

EASY LEVEL STICKER HEIGHT - SMALL LIFTS (INCHES)												
		26	27	28	29	30	31	32	33	34	35	36
WATER DEPTH (INCHES)	79	82	83	84	85	86	87	88	89	90	91	92
	80	83	84	85	86	87	88	89	90	91	92	93
	81	84	85	86	87	88	89	90	91	92	93	94
	82	85	86	87	88	89	90	91	92	93	94	95
	83	86	87	88	89	90	91	92	93	94	95	96
	84	87	88	89	90	91	92	93	94	95	96	97
	85	88	89	90	91	92	93	94	95	96	97	98
	86	89	90	91	92	93	94	95	96	97	98	99
	87	90	91	92	93	94	95	96	97	98	99	100
	88	91	92	93	94	95	96	97	98	99	100	101
	89	92	93	94	95	96	97	98	99	100	101	102
	90	93	94	95	96	97	98	99	100	101	102	103
	91	94	95	96	97	98	99	100	101	102	103	104
	92	95	96	97	98	99	100	101	102	103	104	105
	93	96	97	98	99	100	101	102	103	104	105	106
	94	97	98	99	100	101	102	103	104	105	106	107

		EASY LEVEL STICKER HEIGHT - SMALL LIFTS (INCHES)										
		26	27	28	29	30	31	32	33	34	35	36
	95	98	99	100	101	102	103	104	105	106	107	108
	96	99	100	101	102	103	104	105	106	107	108	109
	97	100	101	102	103	104	105	106	107	108	109	110
	98	101	102	103	104	105	106	107	108	109	110	111
	99	102	103	104	105	106	107	108	109	110	111	112
	100	103	104	105	106	107	108	109	110	111	112	113
	101	104	105	106	107	108	109	110	111	112	113	114
	102	105	106	107	108	109	110	111	112	113	114	115
	103	106	107	108	109	110	111	112	113	114	115	116
	104	107	108	109	110	111	112	113	114	115	116	117
	105	108	109	110	111	112	113	114	115	116	117	118
	106	109	110	111	112	113	114	115	116	117	118	119
	107	110	111	112	113	114	115	116	117	118	119	120
	108	111	112	113	114	115	116	117	118	119	120	121
	109	112	113	114	115	116	117	118	119	120	121	122

FOR EXAMPLE, A WATER DEPTH OF 100 INCHES AND RECORDED HEIGHT ON THE WATER LEVEL STICKER OF 35 INCHES WOULD RESULT IN A COLLAR HEIGHT OF 112 INCHES.

TO DETERMINE COLLAR HEIGHT, THE FOLLOWING TABLES ON SHEETS 16 & 17 ARE USED FOR LARGE LIFTS. REFER TO FIGURE 2.2 AND SHEET 13 ON HOW TO MEASURE FOR COLLAR HEIGHT.

NOTE: STICKER HEIGHT IS OPTIMUM WATER LEVEL ONLY.

		STICKER HEIGHT - LARGE LIFTS														
		28	29	30	31	32	33	34	35	36	37	38	39	40	41	42
WATER DEPTH (INCHES)	81	85	86	87	88	89	90	91	92	93	94	95	96	97	98	99
	82	86	87	88	89	90	91	92	93	94	95	96	97	98	99	100
	83	87	88	89	90	91	92	93	94	95	96	97	98	99	100	101
	84	88	89	90	91	92	93	94	95	96	97	98	99	100	101	102
	85	89	90	91	92	93	94	95	96	97	98	99	100	101	102	103
	86	90	91	92	93	94	95	96	97	98	99	100	101	102	103	104
	87	91	92	93	94	95	96	97	98	99	100	101	102	103	104	105
	88	92	93	94	95	96	97	98	99	100	101	102	103	104	105	106
	89	93	94	95	96	97	98	99	100	101	102	103	104	105	106	107
	90	94	95	96	97	98	99	100	101	102	103	104	105	106	107	108
	91	95	96	97	98	99	100	101	102	103	104	105	106	107	108	109
	92	96	97	98	99	100	101	102	103	104	105	106	107	108	109	110
	93	97	98	99	100	101	102	103	104	105	106	107	108	109	110	111
	94	98	99	100	101	102	103	104	105	106	107	108	109	110	111	112
	95	99	100	101	102	103	104	105	106	107	108	109	110	111	112	113
	96	100	101	102	103	104	105	106	107	108	109	110	111	112	113	114
	97	101	102	103	104	105	106	107	108	109	110	111	112	113	114	115
	98	102	103	104	105	106	107	108	109	110	111	112	113	114	115	116
	99	103	104	105	106	107	108	109	110	111	112	113	114	115	116	117
	100	104	105	106	107	108	109	110	111	112	113	114	115	116	117	118

		STICKER HEIGHT - LARGE LIFTS														
		28	29	30	31	32	33	34	35	36	37	38	39	40	41	42
WATER DEPTH (INCHES)	101	105	106	107	108	109	110	111	112	113	114	115	116	117	118	119
	102	106	107	108	109	110	111	112	113	114	115	116	117	118	119	120
	103	107	108	109	110	111	112	113	114	115	116	117	118	119	120	121
	104	108	109	110	111	112	113	114	115	116	117	118	119	120	121	122
	105	109	110	111	112	113	114	115	116	117	118	119	120	121	122	123
	106	110	111	112	113	114	115	116	117	118	119	120	121	122	123	124
	107	111	112	113	114	115	116	117	118	119	120	121	122	123	124	125
	108	112	113	114	115	116	117	118	119	120	121	122	123	124	125	126
	109	113	114	115	116	117	118	119	120	121	122	123	124	125	126	127
	110	114	115	116	117	118	119	120	121	122	123	124	125	126	127	128
	111	115	116	117	118	119	120	121	122	123	124	125	126	127	128	129
	112	116	117	118	119	120	121	122	123	124	125	126	127	128	129	130
	113	117	118	119	120	121	122	123	124	125	126	127	128	129	130	131
	114	118	119	120	121	122	123	124	125	126	127	128	129	130	131	132
	115	119	120	121	122	123	124	125	126	127	128	129	130	131	132	133
	116	120	121	122	123	124	125	126	127	128	129	130	131	132	133	134

FOR EXAMPLE, A WATER DEPTH OF 107 INCHES AND RECORDED HEIGHT ON THE WATER LEVEL STICKER OF 41 INCHES WOULD RESULT IN A COLLAR HEIGHT OF 124 INCHES.

BRING ANCHOR ASSEMBLY TOWARDS LIFT UNTIL AUGER TOUCHES FRAME BEAM (FIGURE 2.8). LIFT THE ANCHOR ASSEMBLY AND STOP WHEN THE AUGER HELIX TOUCHES THE BOTTOM OF THE FRAME BEAM (FIGURE 2.9).

FIGURE 2.8

2X

BRING ANCHOR ASSEMBLY
TOWARDS LIFT UNTIL AUGER
TOUCHES FRAME BEAM

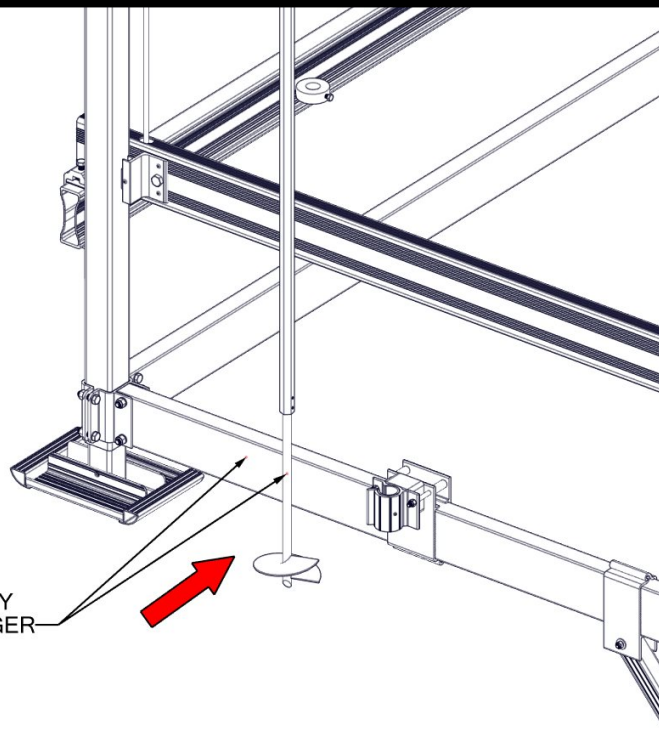
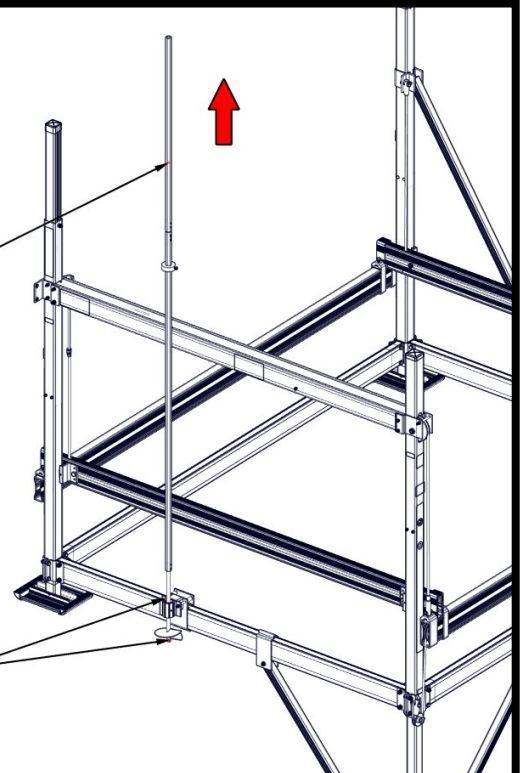


FIGURE 2.9

2X

LIFT ANCHOR ASSEMBLY

STOP WHEN
AUGER HELIX TOUCHES
BOTTOM OF FRAME BEAM



SLIDE THE ANCHOR ASSEMBLY TOWARDS THE POCKET. NOTE THAT ONLY THE AUGER SHAFT WILL SLIDE INTO THE POCKET, THE HEX SHAFT WILL NOT (FIGURE 2.10). LOWER THE ANCHOR INTO POCKET UNTIL AUGER TOUCHES LAKE BOTTOM (FIGURE 2.11).

FIGURE 2.10

2X

NOTE: ONLY THE AUGER SHAFT
WILL SLIDE INTO POCKET.
HEX SHAFT WILL NOT.

SLIDE ANCHOR ASSEMBLY
TOWARDS POCKET

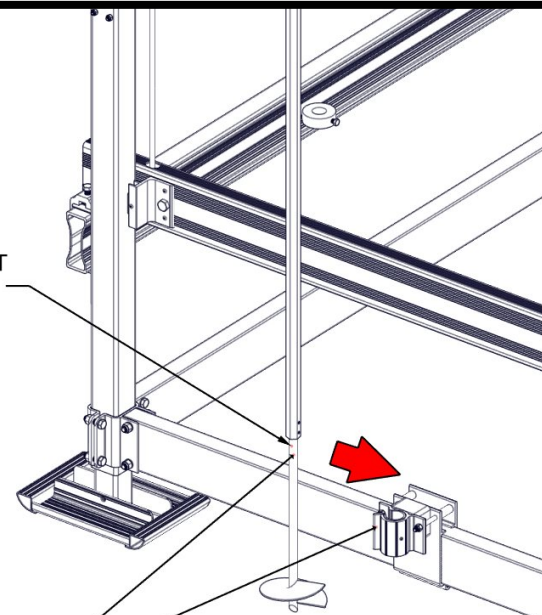
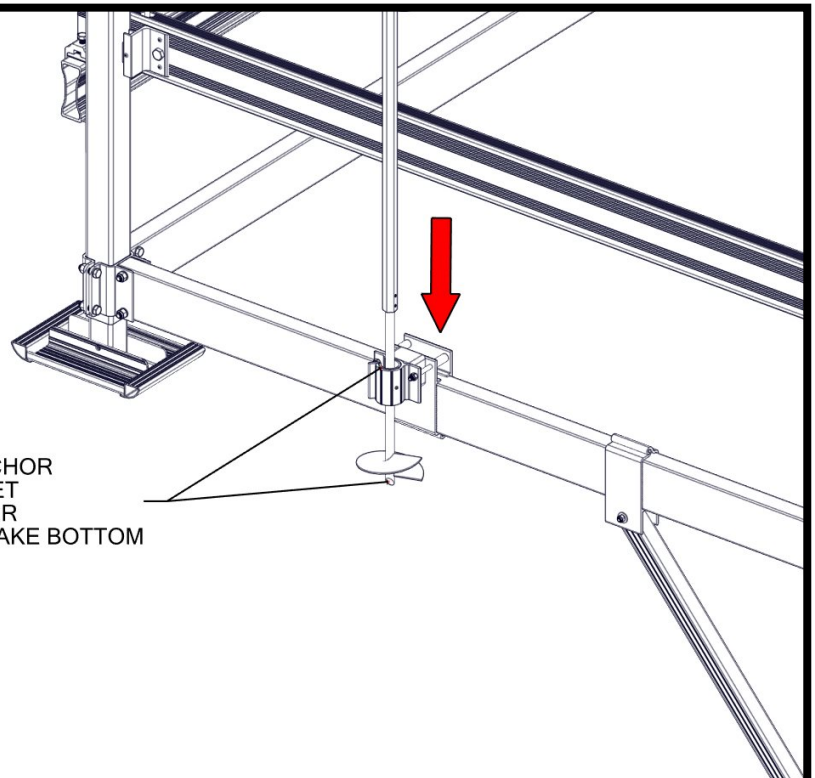


FIGURE 2.11

2X

LOWER ANCHOR
INTO POCKET
UNTIL AUGER
TOUCHES LAKE
BOTTOM



IF ADDITIONAL ADJUSTMENT IS REQUIRED, LOOSEN 3/8" NUTS AND SLIDE POCKETS ON FRAME BEAM WITH ANCHOR ASSEMBLIES UNTIL DESIRED POSITION IS FOUND. ONCE POSITION IS SET, RE-TORQUE NUTS TO 35 FT-LBS (FIGURE 2.12).

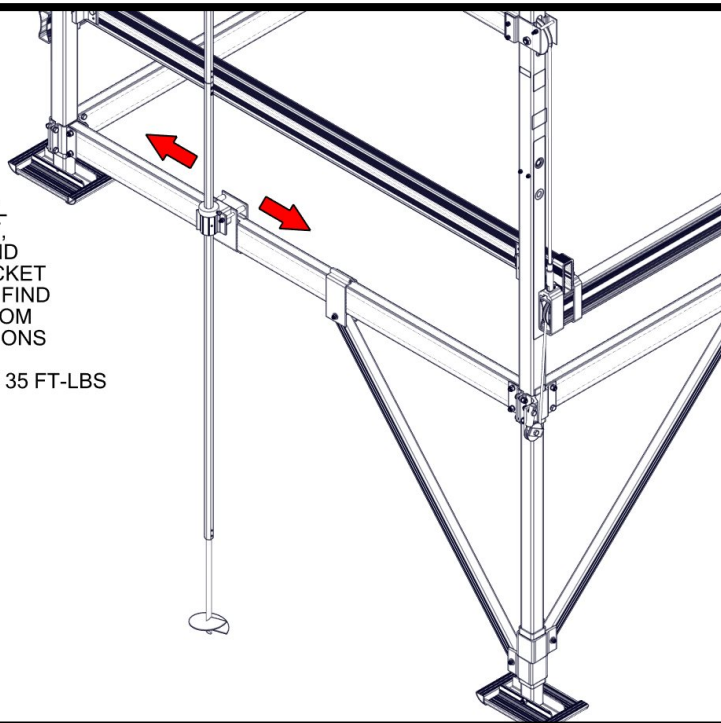
DRIVE ANCHOR ASSEMBLY INTO LAKE BOTTOM USING 1 1/8" 6 POINT SOCKET & 1/2" DRIVE RATCHET UNTIL COLLAR TOUCHES TOP OF ANCHOR POCKET (FIGURE 2.13).

FIGURE 2.12

2X

TO ADJUST FOR FINAL ANCHOR PLACEMENT, LOOSEN 3/8" NUTS AND MOVE ANCHOR & POCKET BACK AND FORTH TO FIND SUITABLE LAKE BOTTOM WITHOUT OBSTRUCTIONS

RE-TORQUE NUTS TO 35 FT-LBS



IMPORTANT

DO NOT
USE AN
IMPACT OR
CORDLESS
DRILL TO
INSTALL
LIFT
ANCHORS.

IMPORTANT NOTE:

ONLY USE A 6
POINT SOCKET.
12 POINT SOCKETS
MAY CAUSE
DAMAGE TO HEX
SHAFT.



6 POINT SOCKET



12 POINT SOCKET
DO NOT USE

FIGURE 2.13

2X

DRIVE ANCHOR
WITH 1-1/8" SOCKET
AND RATCHET
INTO LAKE BOTTOM
UNTIL COLLAR
TOUCHES TOP OF
ANCHOR POCKET

