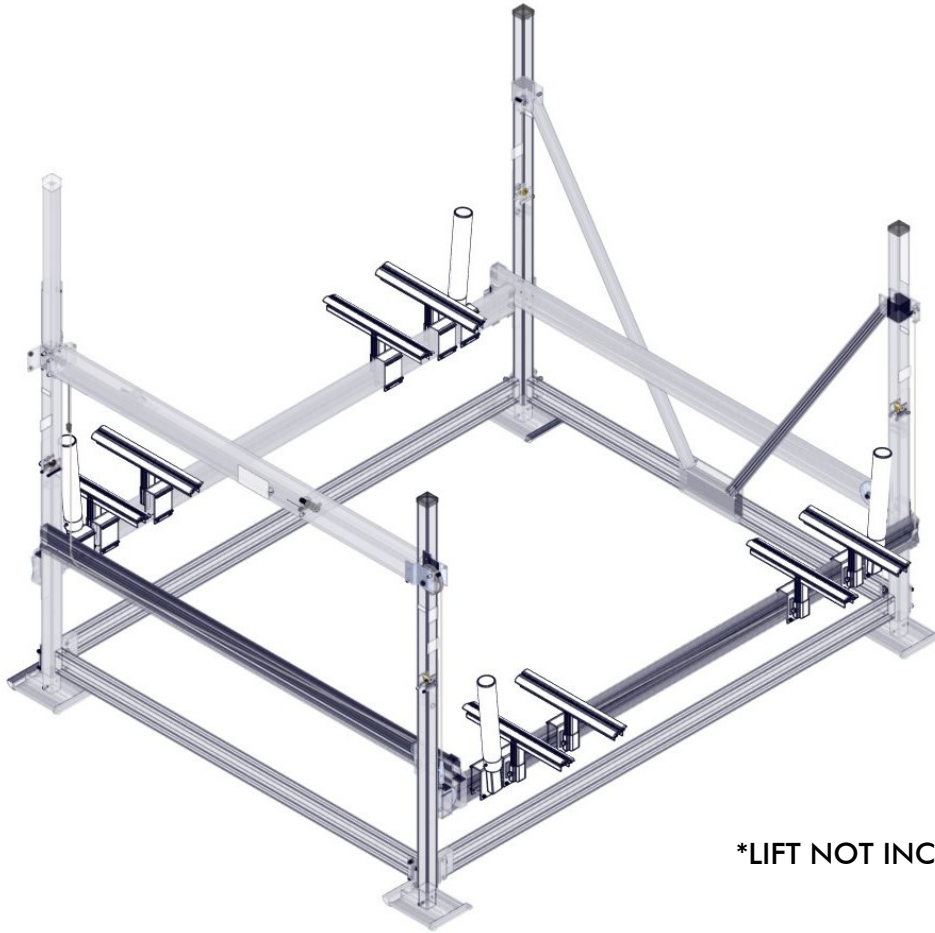


FLOE PONTOON CRADLE PADS

ASSEMBLY INSTRUCTIONS

KIT P/N 511-02490-00 (SMALL LIFTS), 511-02495-00 (LARGE LIFTS),
511-02498-00 (TRI-TOON ADD-ON, LARGE LIFTS)



TOOLS REQUIRED

- (2) 7/16" SOCKETS/WRENCHES
- (2) 9/16" SOCKET/WRENCH
- (2) 3/4" SOCKET/WRENCH
- TAPE MEASURE
- TORQUE WRENCH

*LIFT NOT INCLUDED

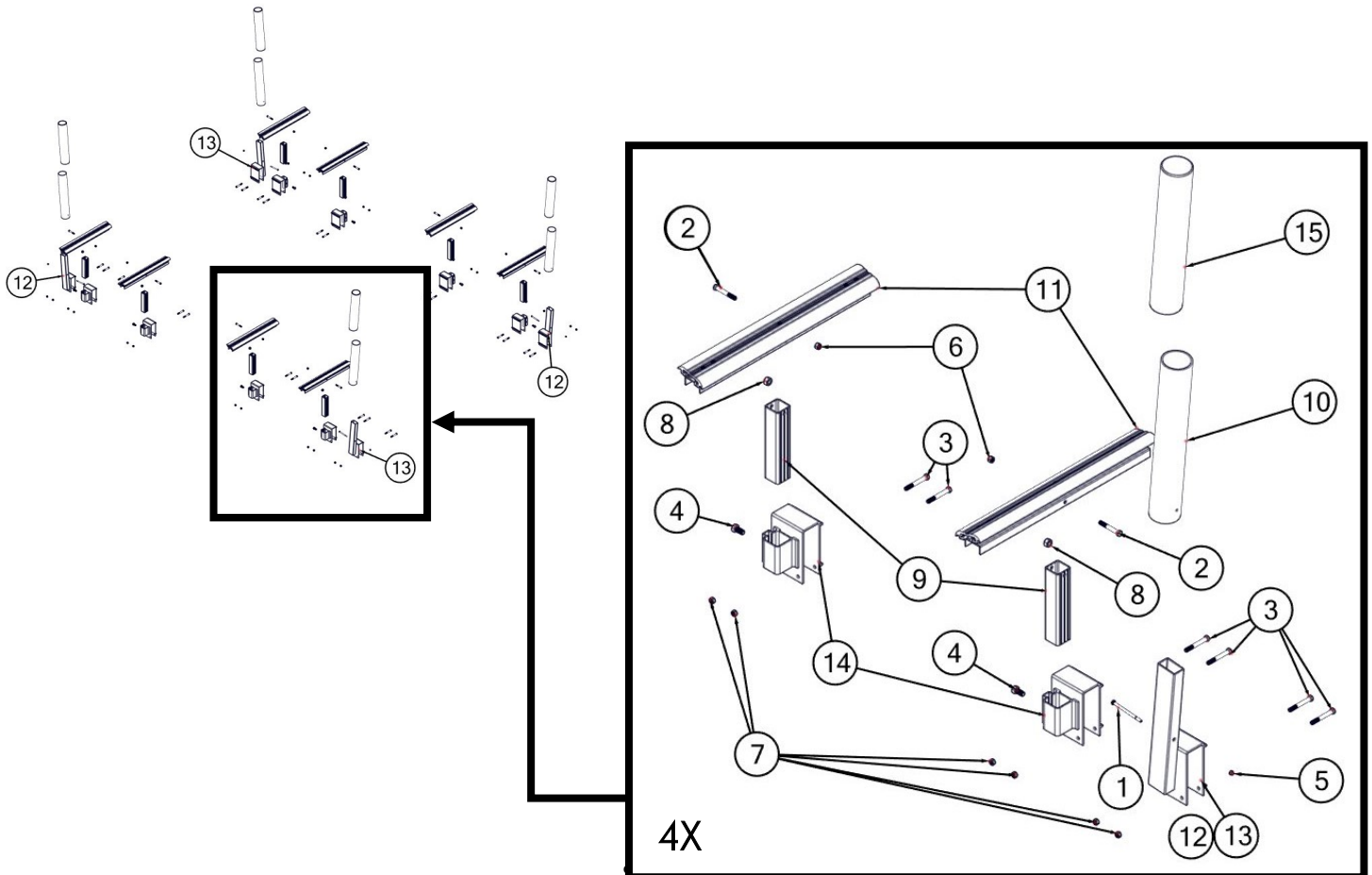
BUNK/CRADLE PAD DISCLAIMER

DUE TO THE LARGE VARIETY OF BOAT HULL DESIGNS, WE STRONGLY RECOMMEND THAT YOU CONSULT WITH YOUR BOAT'S MANUFACTURER TO ENSURE THAT YOUR ARE SUPPORTING YOUR BOAT PROPERLY TO AVOID ANY POTENTIAL DAMAGE.

BILL OF MATERIALS

P/N 511-02490-00		CRADLE PADS, PONTOON W/ GUIDE-INS SM		
NUMBER	PART NUMBER	QTY.	DESCRIPTION	
1	001-70019-00	4	HHCS, 1/4-20 x 4" 18-8 ss	
2	001-70114-00	8	HHCS, 3/8-16 x 2 3/4" 18-8 ss	
3	001-70115-00	24	HHCS, 3/8-16 x 3" 18-8 ss	
4	001-70205-00	8	HHCS, 1/2-13 x 1" SS 18-8	
5	001-75001-00	4	NUT, NYLOCK 1/4-20 ALUM	
6	001-76071-00	8	NUT, NYLOCK 3/8-16 ALUM.	
7	001-76349-00	24	NUT, 3/8-16 ALUM.	
8	001-76350-00	8	NUT, 1/2-13 ALUM.	
9	002-04156-00	8	TUBE, PONTOON CRADLE PAD – 9"	
10	002-04159-00	4	PIPE, PONTOON CRADLE PAD – 20.5"	
11	111-00374-00	8	ASS'Y, PONTOON CRADLE PAD	
12	111-00375-00	2	WELD'T, PONTOON GUIDE-IN SIDE A	
13	111-00376-00	2	WELD'T, PONTOON GUIDE-IN SIDE B	
14	111-00377-00	8	WELD'T, CLAMP POCKET PONTOON	
15	511-02860-00	4	VERT. GUIDE-IN COVERS 18.5" GREY	

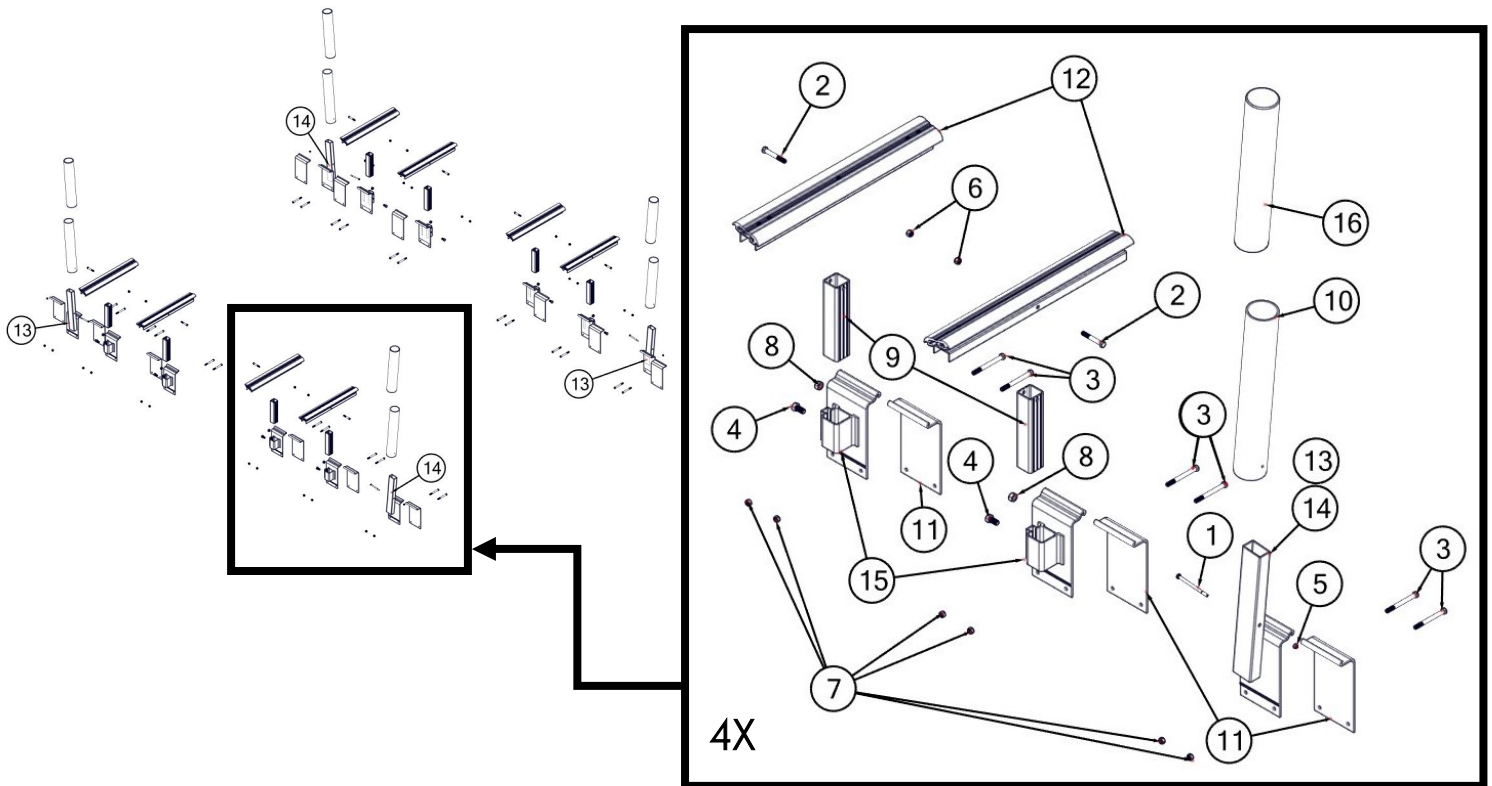
EXPLODED VIEW



BILL OF MATERIALS

P/N 511-02495-00		CRADLE PADS, PONTOON W/ GUIDE-INS LG		
NUMBER	PART NUMBER	QTY.	DESCRIPTION	
1	001-70019-00	4	HHCS, 1/4-20 x 4" 18-8 ss	
2	001-70114-00	8	HHCS, 3/8-16 x 2 3/4" 18-8 ss	
3	001-70119-00	24	HHCS, 3/8-16 x 4" 18-8 ss	
4	001-70205-00	8	HHCS, 1/2-13 x 1" SS 18-8	
5	001-75001-00	4	NUT, NYLOCK 1/4-20 ALUM	
6	001-76071-00	8	NUT, NYLOCK 3/8-16 ALUM.	
7	001-76349-00	24	NUT, 3/8-16 ALUM.	
8	001-76350-00	8	NUT, 1/2-13 ALUM.	
9	002-04156-00	8	TUBE, PONTOON CRADLE PAD – 9"	
10	002-04159-00	4	PIPE, PONTOON CRADLE PAD – 20.5"	
11	002-04285-00	12	CLAMP, BUNK CRADLE (MALE)	
12	111-00374-00	8	ASS'Y, PONTOON CRADLE PAD	
13	111-00378-00	2	WELD'T, PONTOON GUIDE-IN SIDE A	
14	111-00379-00	2	WELD'T, PONTOON GUIDE-IN SIDE B	
15	111-00380-00	8	WELD'T, CLAMP POCKET - PONTOON	
16	511-02860-00	4	VERT. GUIDE-IN COVERS 18.5" GREY	

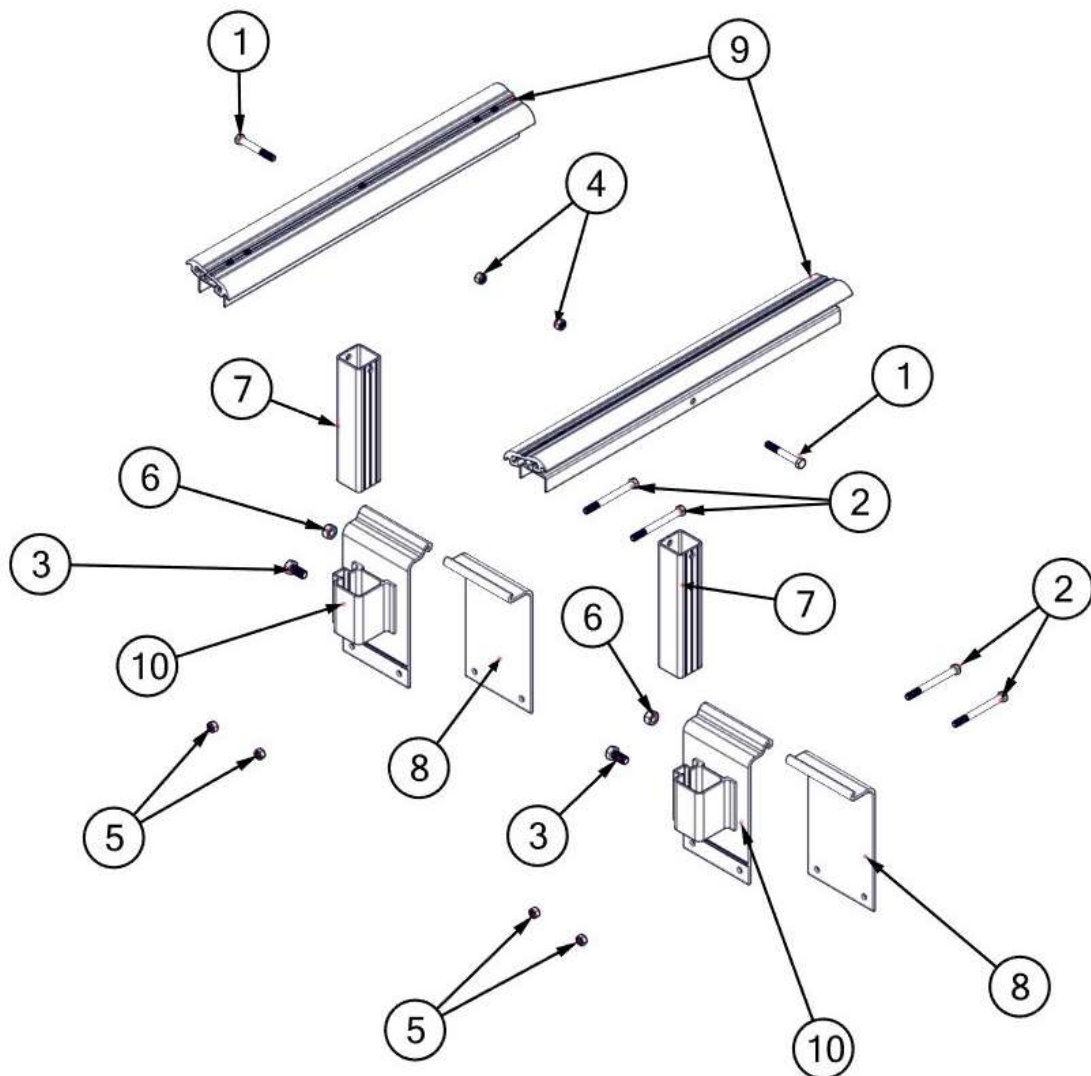
EXPLODED VIEW



BILL OF MATERIALS

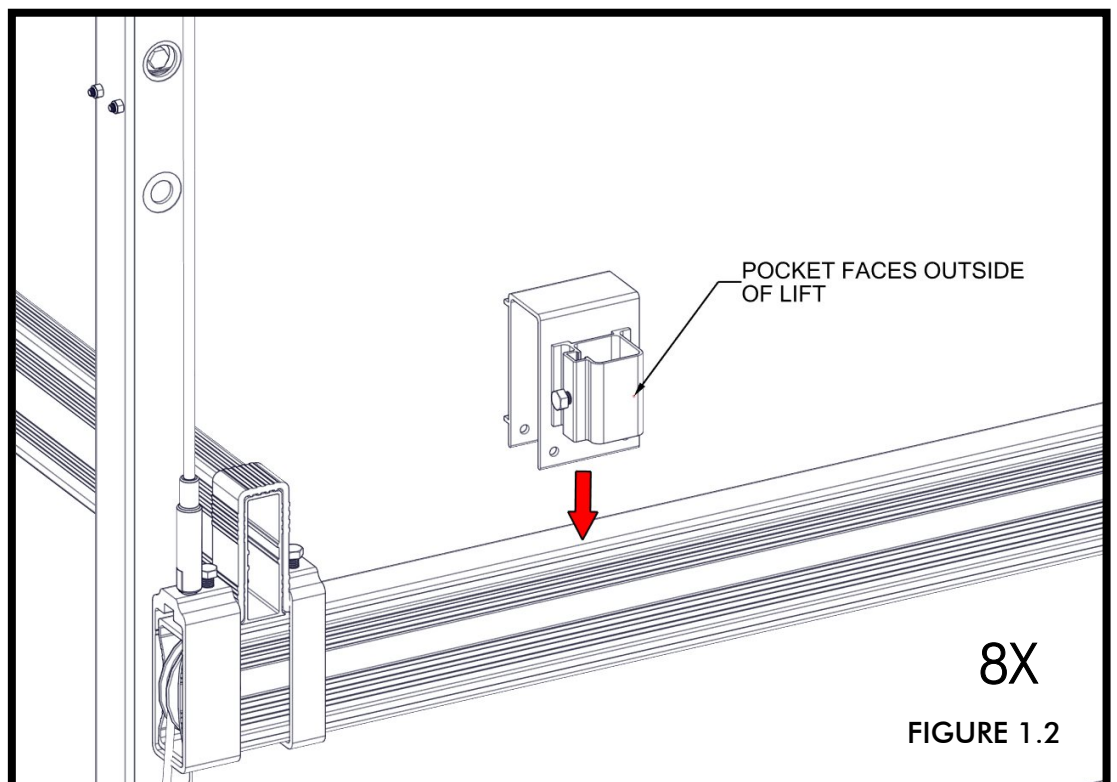
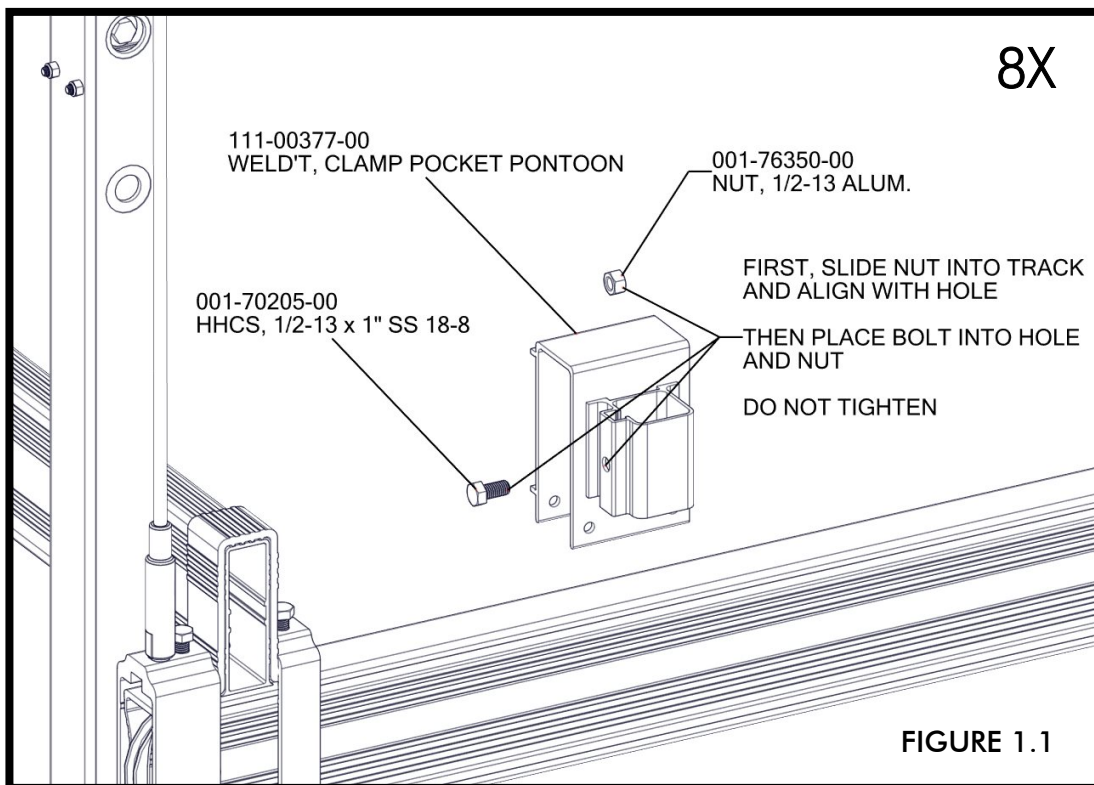
P/N 511-02498-00		CRADLE PADS, TRI-TOON ADD-ON LG.		
NUMBER	PART NUMBER	QTY.	DESCRIPTION	
1	001-70114-00	4	HHCS, 3/8-16 x 2 3/4" 18-8 ss	
2	001-70119-00	8	HHCS, 3/8-16 x 4" 18-8 ss	
3	001-70205-00	4	HHCS, 1/2-13 x 1" SS 18-8	
4	001-76071-00	4	NUT, NYLOCK 3/8-16 ALUM.	
5	001-76349-00	8	NUT, 3/8-16 ALUM.	
6	001-76350-00	4	NUT, 1/2-13 ALUM.	
7	002-04156-00	4	TUBE, PONTOON CRADLE PAD - 9"	
8	002-04285-00	4	CLAMP, BUNK CRADLE (MALE)	
9	111-00374-00	4	ASS'Y, PONTOON CRADLE PAD	
10	111-00380-00	4	WELD'T, CLAMP POCKET - PONTOON	

EXPLODED VIEW

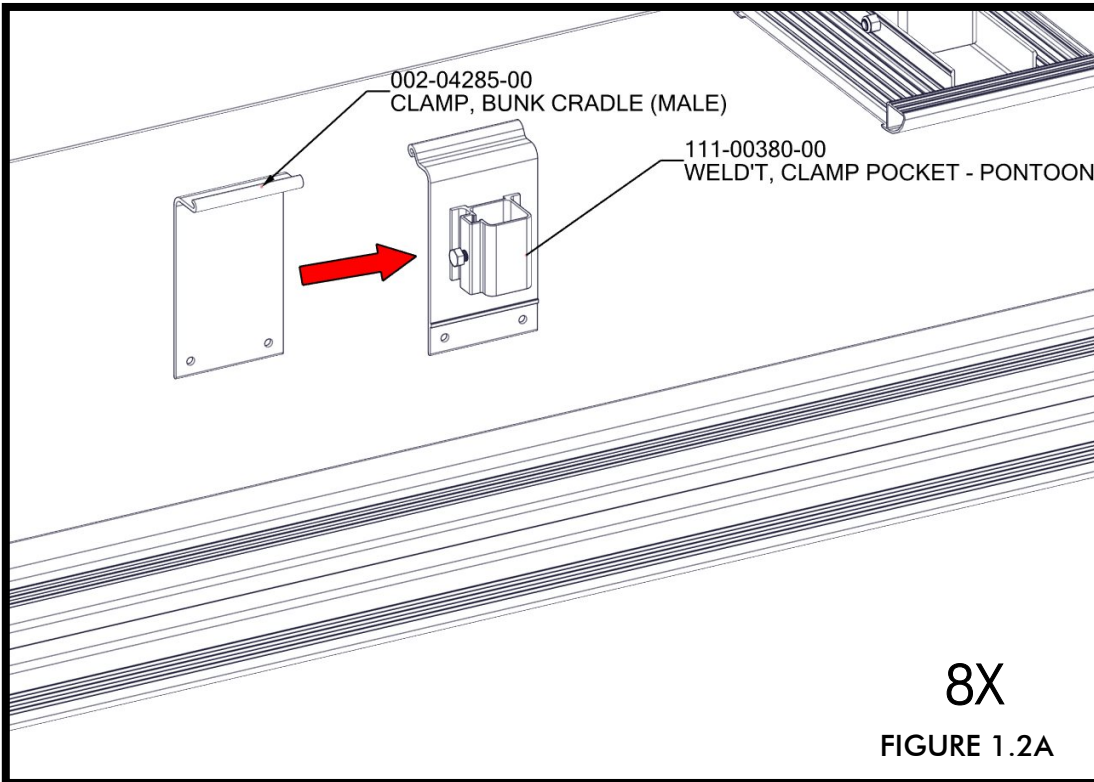


STEP 1

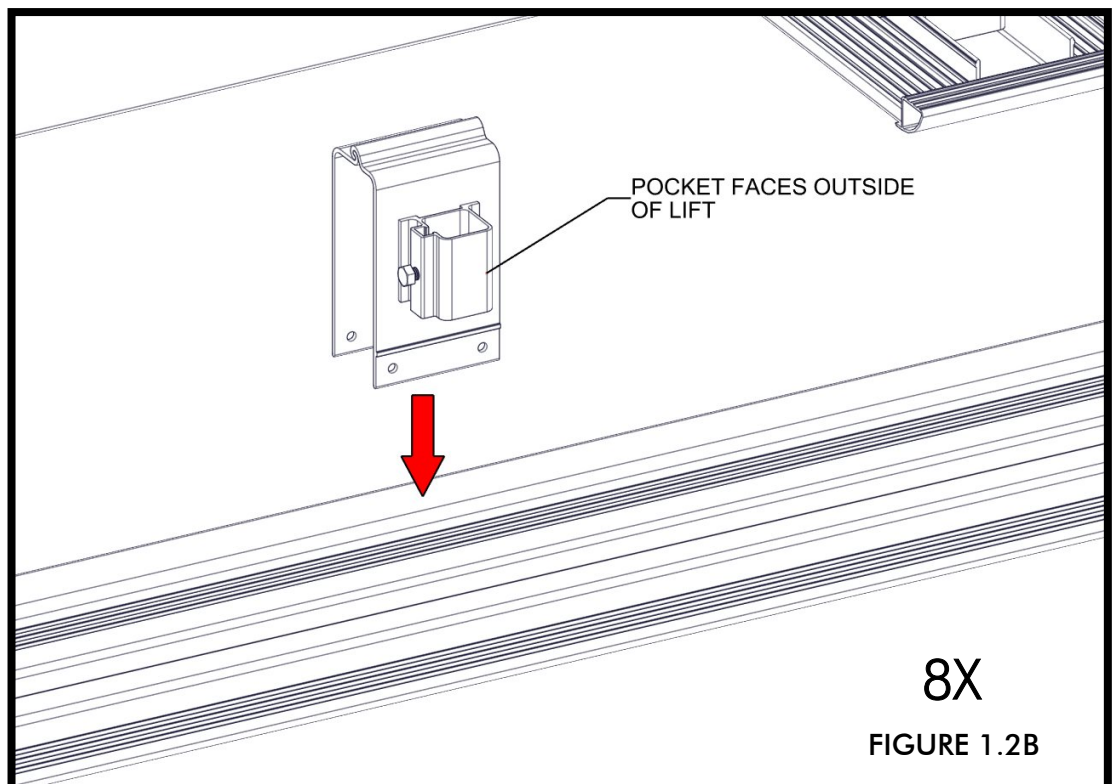
PLACE (1) 1/2" NUT AND (1) 1/2" X 1" BOLT INTO CLAMP POCKETS (FIGURE 1.1). SLIDE CLAMPS ONTO CRADLE BEAM WITH POCKETS FACING OUTWARDS (FIGURE 1.2).



FOR LARGE LIFTS, SLIDE CLAMPS TOGETHER (FIGURE 1.2A), THEN SLIDE ONTO CRADLE BEAM WITH POCKETS FACING OUTWARDS (FIGURE 1.2B).

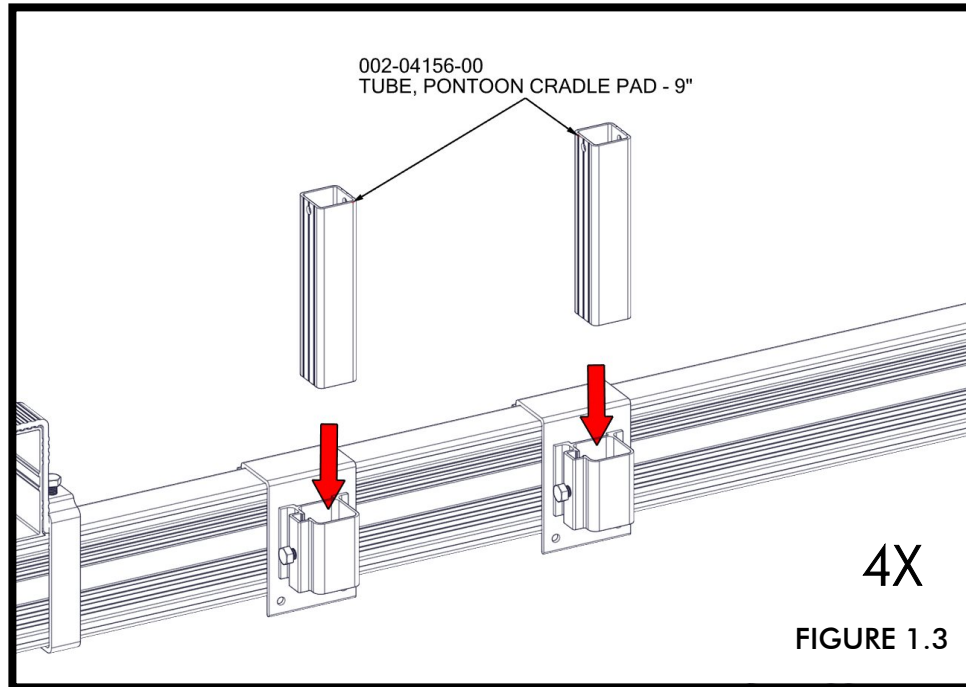


**NOTE: IF
INSTALLING
TRI-TOON
KIT, REPEAT
1.2A & 1.2B
FOR THE (4)
ADDITIONAL
CRADLE
CLAMPS**



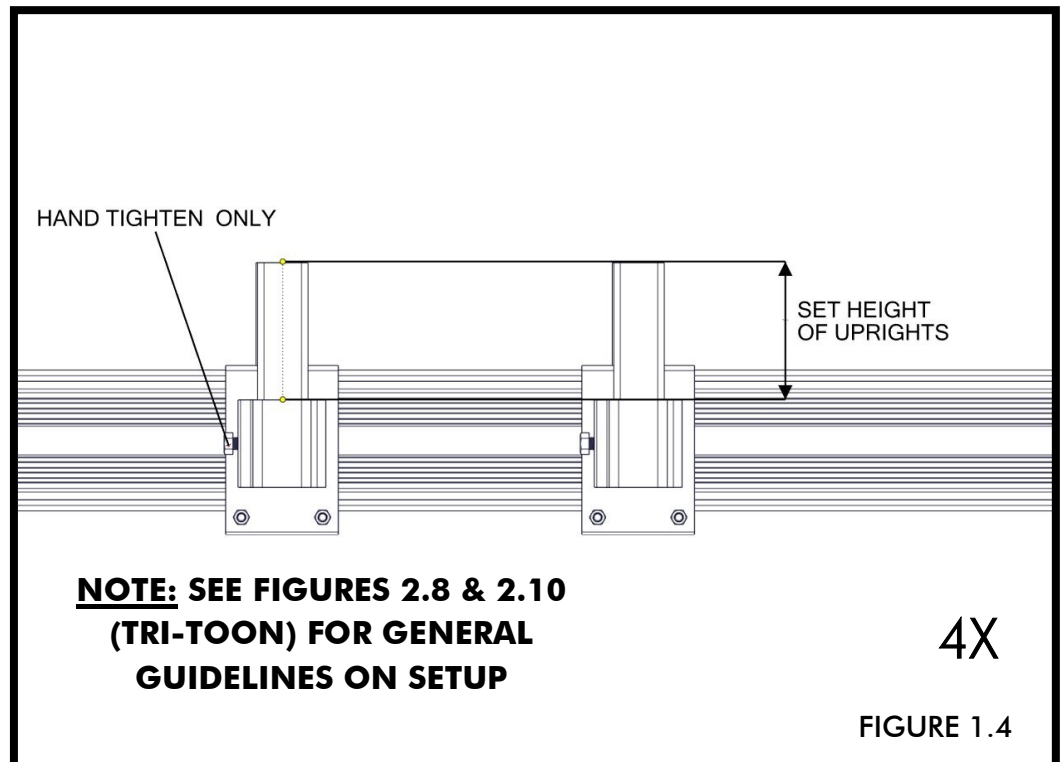
INSERT UPRIGHT TUBES INTO CLAMP WELDMENTS (FIGURE 1.3). ADJUST HEIGHT AND HAND TIGHTEN FASTENERS ONLY (FIGURE 1.4).

**NOTE: IF
INSTALLING
TRI-TOON
KIT, REPEAT
FOR THE (4)
ADDITIONAL
TUBES**

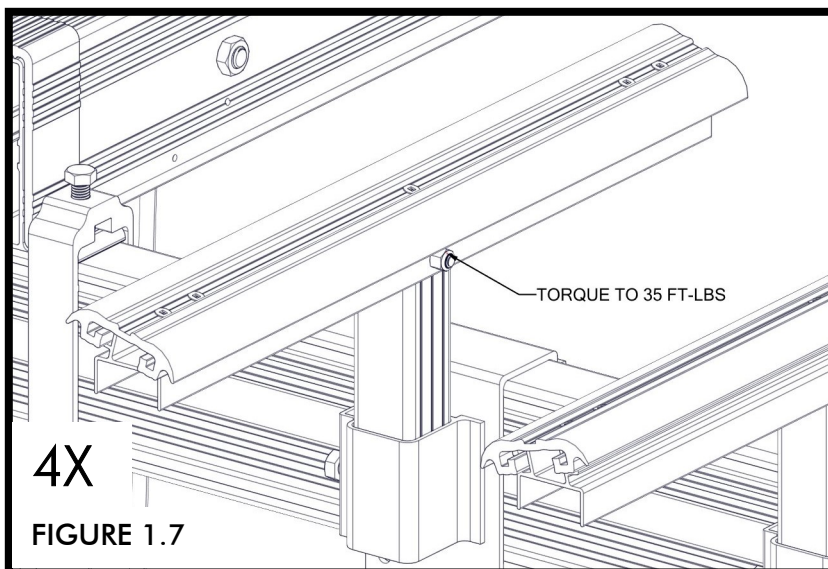
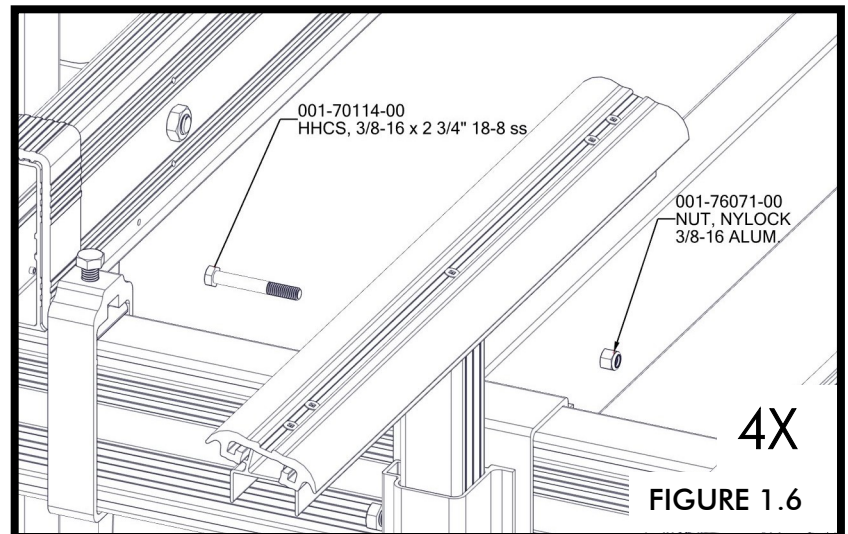
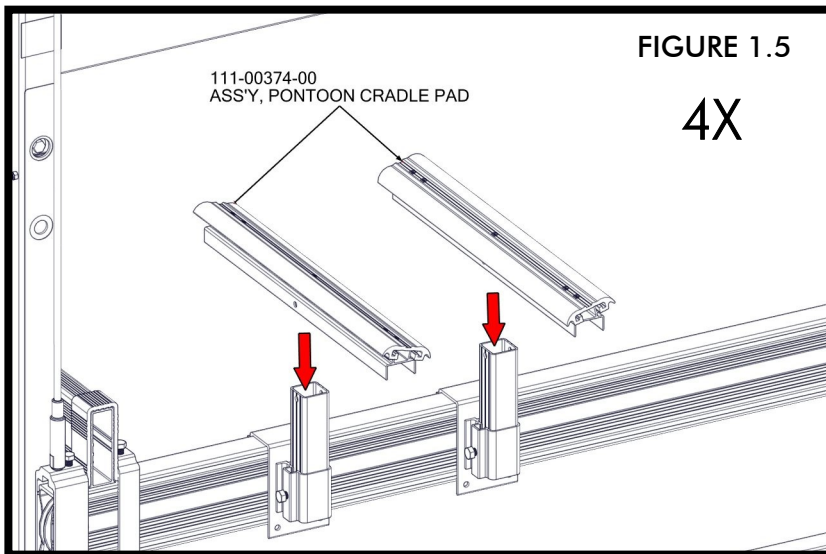


**BUNK/CRADLE PAD
DISCLAIMER**

**DUE TO THE LARGE
VARIETY OF BOAT
HULL DESIGNS, WE
STRONGLY
RECOMMEND THAT
YOU CONSULT WITH
YOUR BOAT'S
MANUFACTURER TO
ENSURE THAT YOUR
ARE SUPPORTING
YOUR BOAT
PROPERLY TO AVOID
ANY POTENTIAL
DAMAGE.**



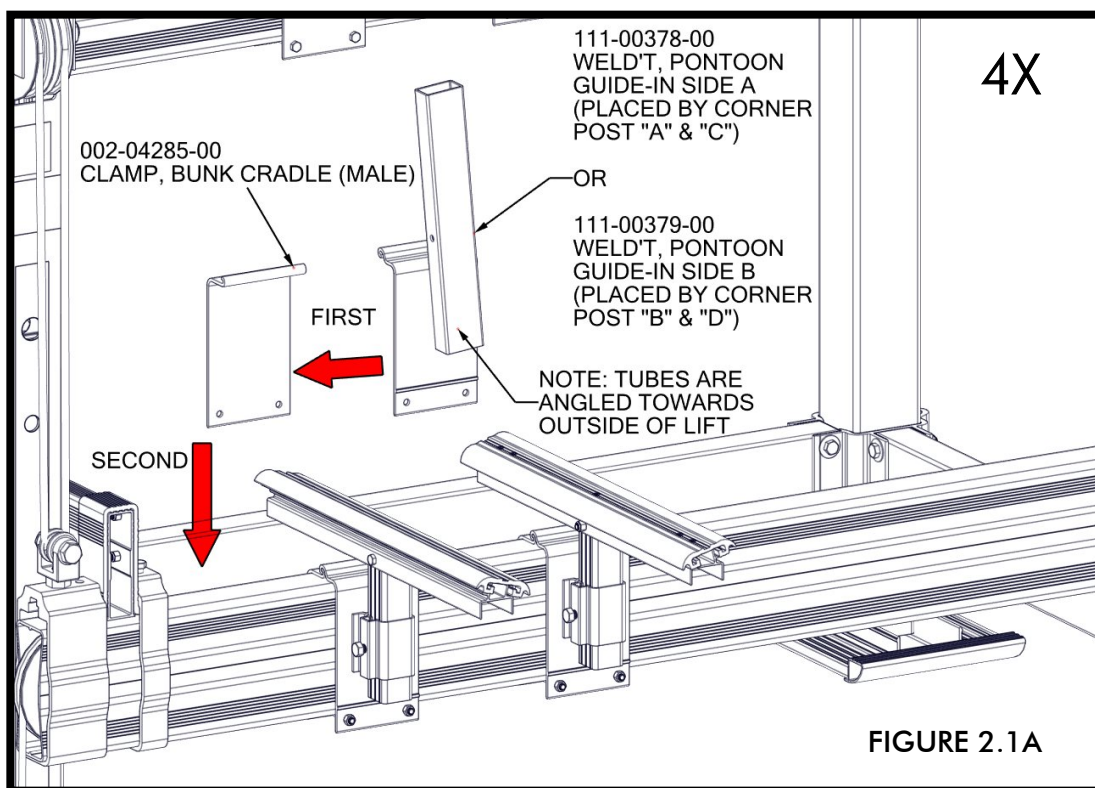
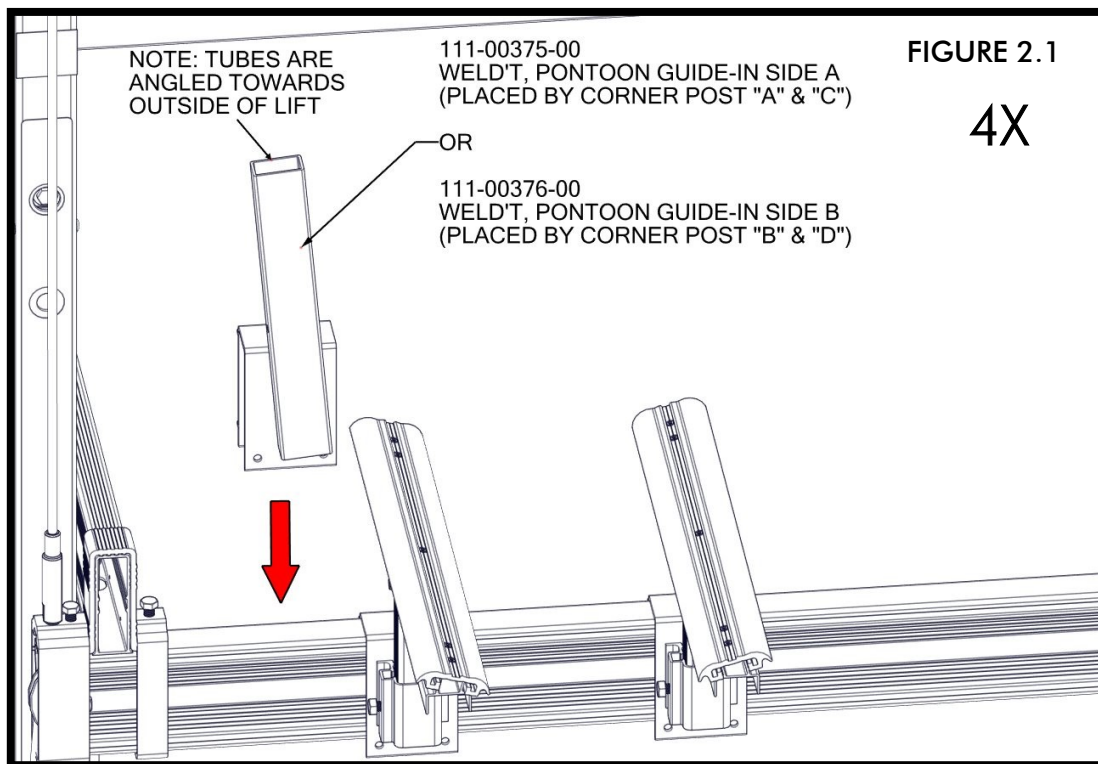
SLIDE CRADLE PADS ONTO UPRIGHTS (FIGURE 1.5) AND ATTACH USING (1) 3/8" x 2 3/4" BOLT AND (1) 3/8" NYLOCK NUT (FIGURE 1.6). TORQUE TO 35 FT-LBS (FIGURE 1.7)



**NOTE: IF INSTALLING TRI-
TOON KIT, REPEAT 1.5-1.7
FOR THE (4) ADDITIONAL
CRADLE PADS**

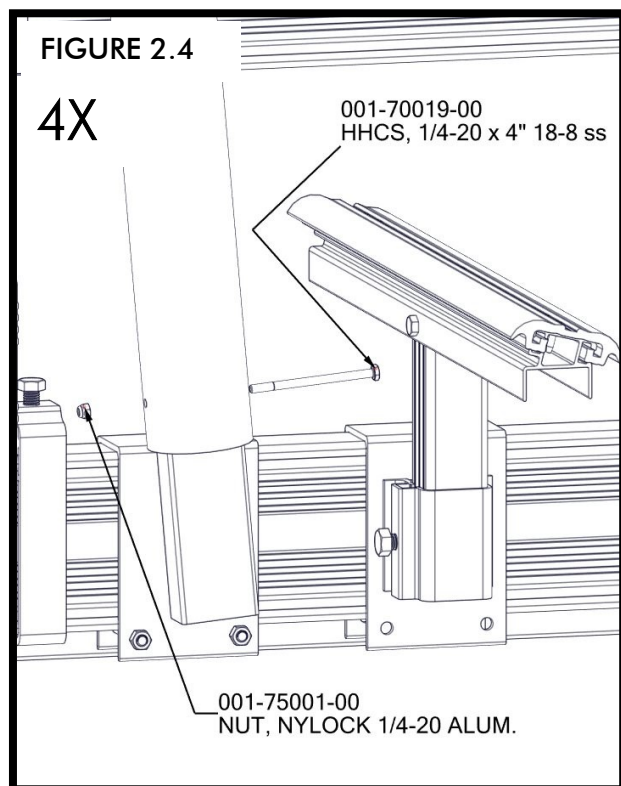
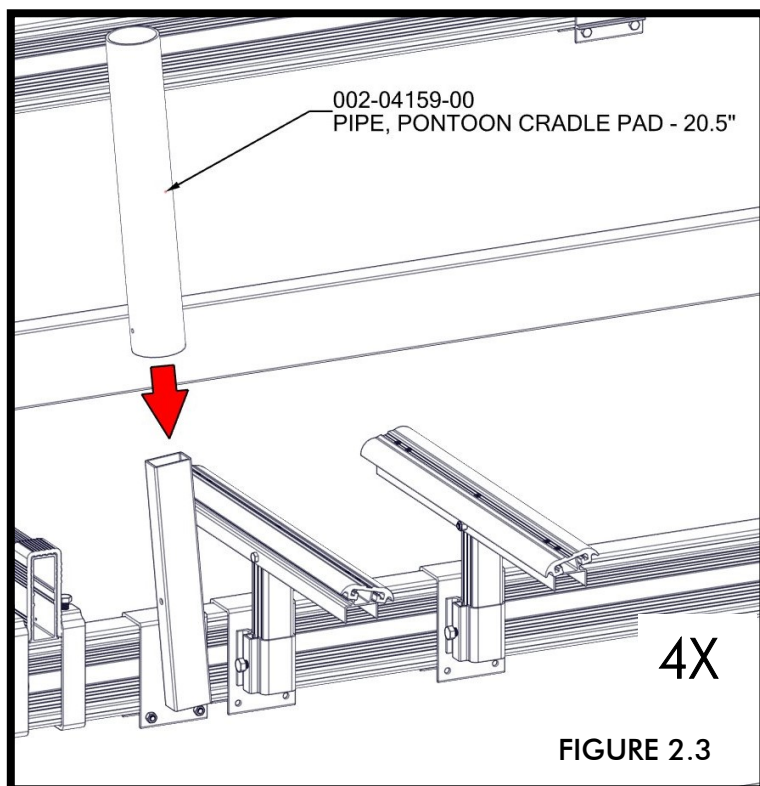
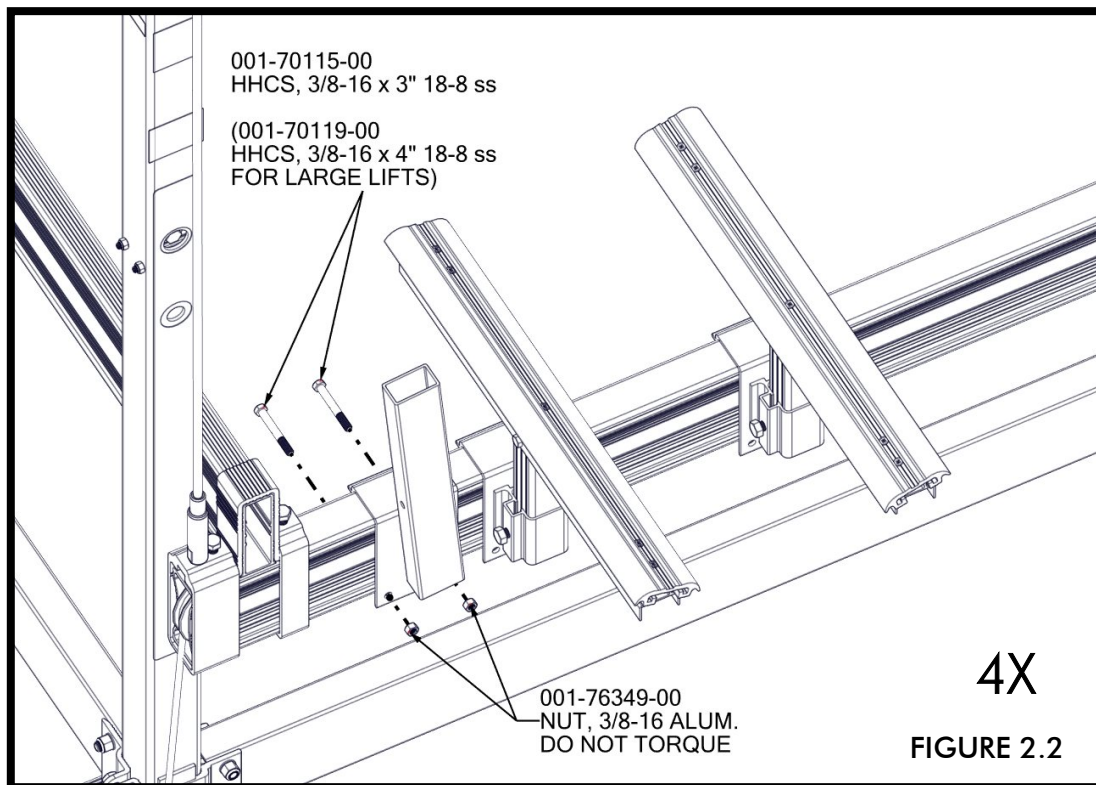
STEP 2

SLIDE GUIDE-IN WELDMENTS ONTO CRADLE BEAMS WITH TUBES ANGLED TOWARDS OUTSIDE OF LIFT (FIGURE 2.1). FOR LARGE LIFTS, SLIDE WELDMENT AND CLAMP TOGETHER, THEN SLIDE ONTO CRADLE BEAMS (FIGURE 2.1A)

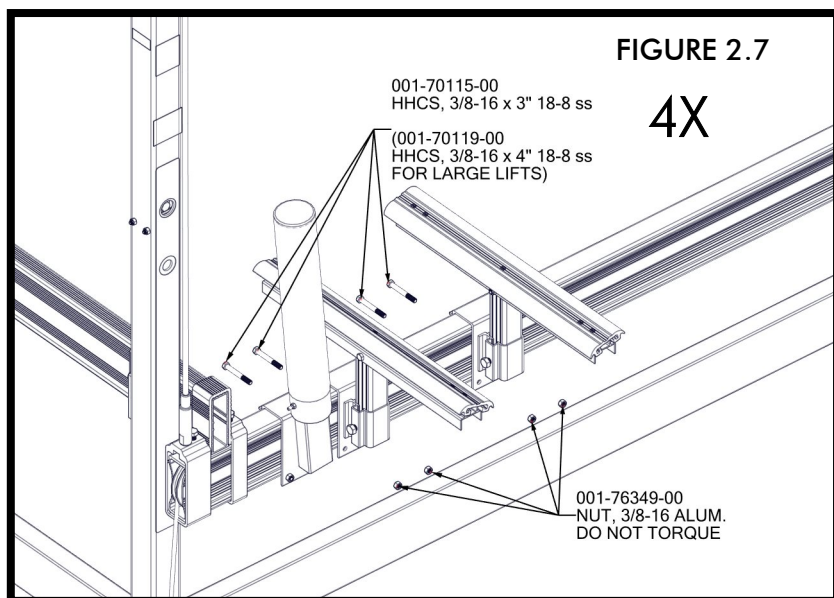
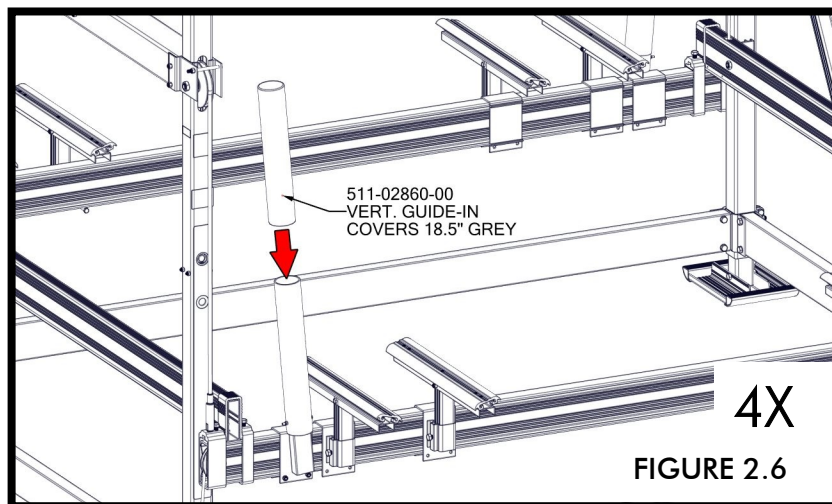
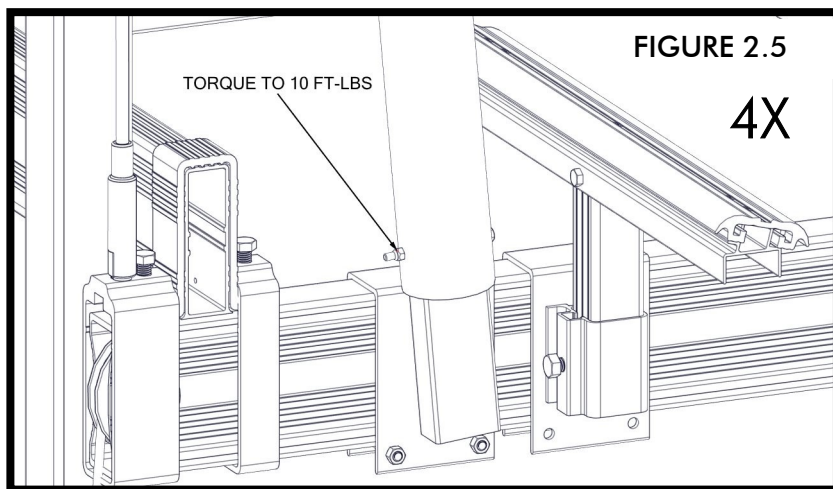


ATTACH GUIDE-IN WELDMENTS TO CRADLE BEAM USING (2) 3/8" X 3" BOLTS AND (2) 3/8" NUTS (FIGURE 2.2). (FOR LARGE LIFTS, USE (2) 3/8" X 4" BOLTS AND (2) 3/8" NUTS). DO NOT TORQUE.

SLIDE PVC TUBES OVER GUIDE-IN WELDMENTS (FIGURE 2.3) AND ATTACH USING (1) 1/4" X 4" BOLT AND (1) 1/4" NYLOCK NUT (FIGURE 2.4).



TORQUE NUTS TO 10 FT-LBS (FIGURE 2.5), THEN SLIDE GUIDE-IN COVERS OVER PVC TUBES (FIGURE 2.6). ATTACH POCKET WELDMENTS TO CRADLE BEAM USING (2) 3/8" X 3" BOLTS AND (2) 3/8" NUTS (FIGURE 2.7). (FOR LARGE LIFTS, USE (2) 3/8" X 4" BOLTS AND (2) 3/8" NUTS). DO NOT TORQUE.



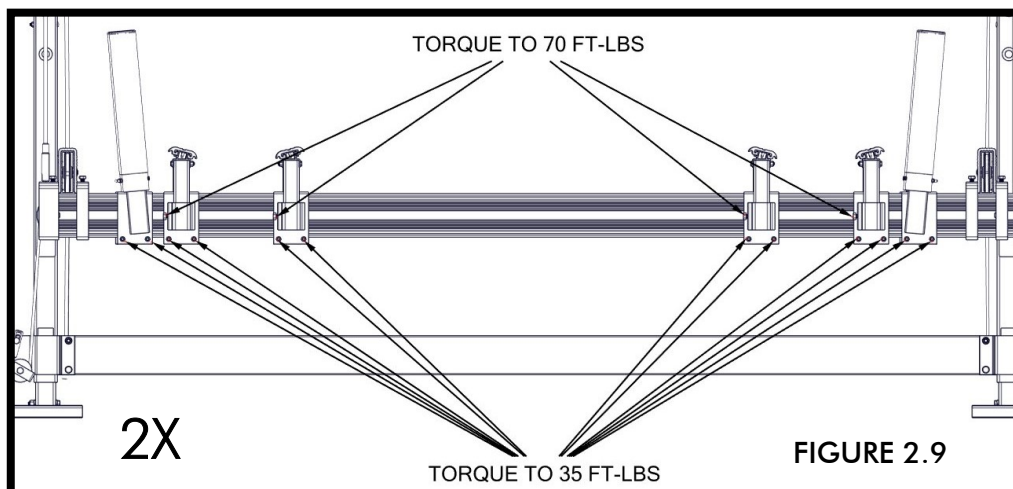
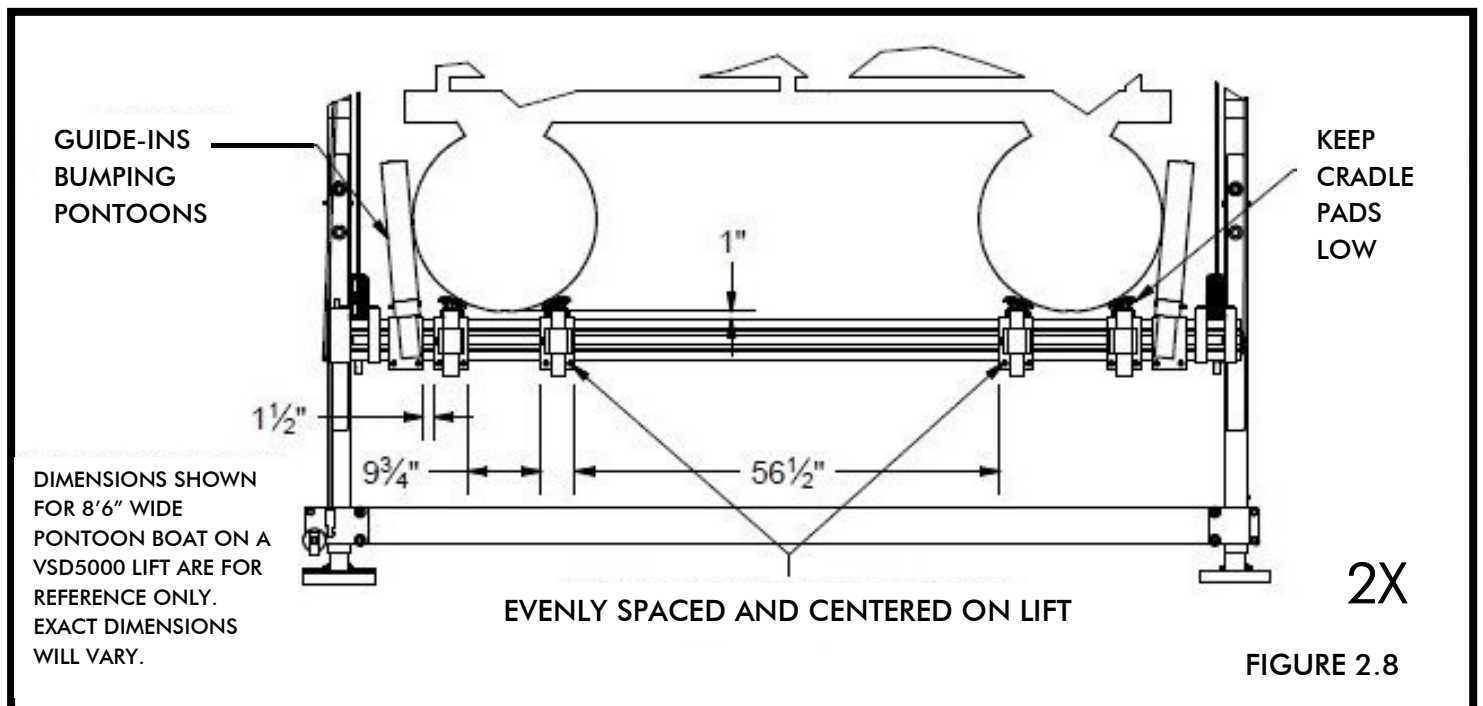
FOLLOW THESE GUIDELINES FOR USING AND LOCATING THE PONTOON BUNKS (FIGURE 2.8).

-THE WIDTH OF THE CRADLE PADS SHOULD KEEP THE PONTOONS OFF THE CRADLE BEAMS BY APPROX. 1".

-THE CRADLE PADS SHOULD BE KEPT AS LOW AS POSSIBLE (NOT QUITE TOUCHING THE CLAMP).

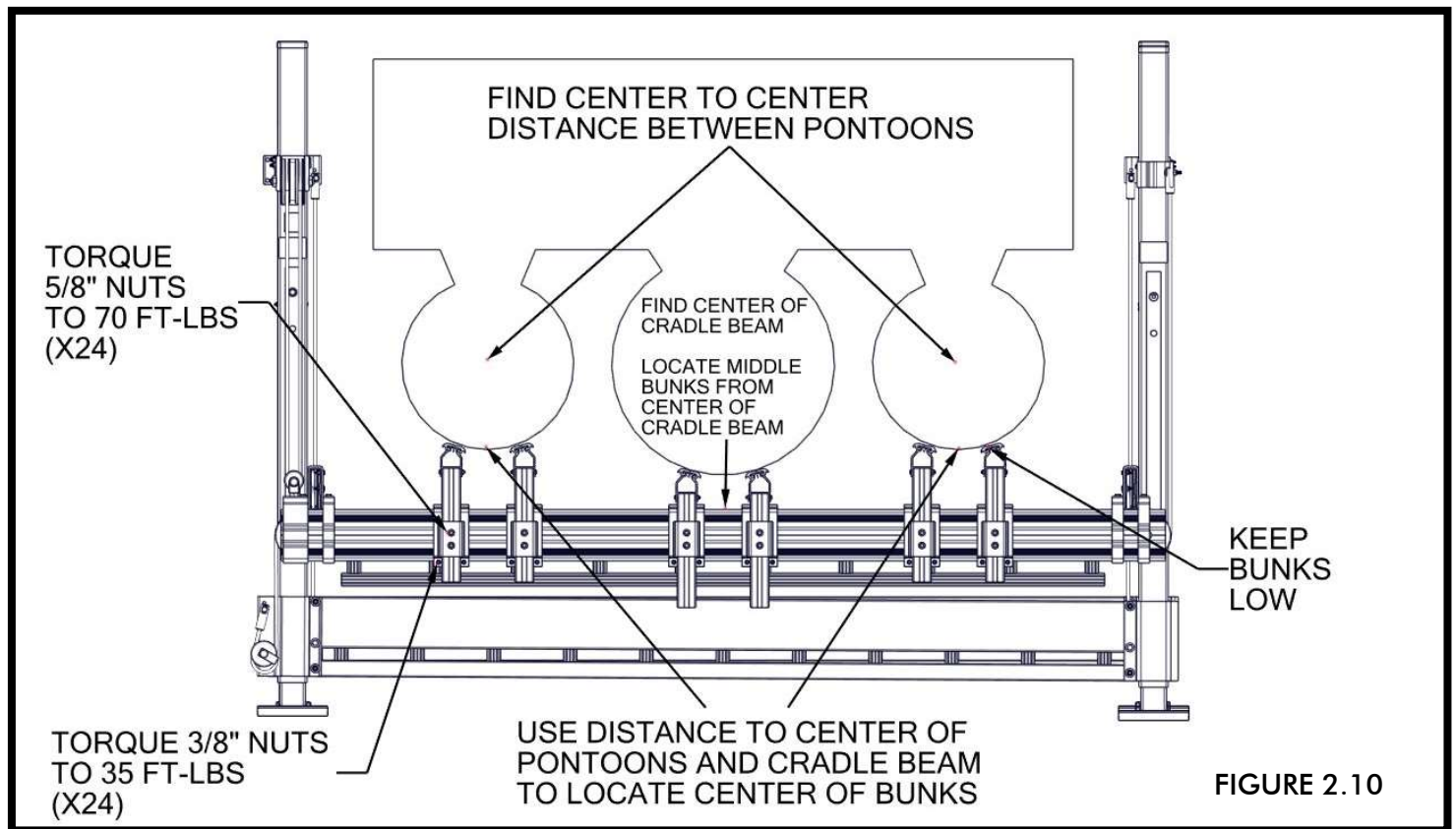
-THE REAR OF A 21' PONTOON BOAT SHOULD OVERHAND PAST THE LIFT BY 3 FEET. FOR EVERY ADDITIONAL FOOT IN LENGTH OF THE BOAT, IT SHOULD OVERHANG BY AN ADDITIONAL 6 INCHES BEYOND THE REAR OF THE LIFT. THESE ARE GENERAL GUIDELINES THAT CAN BE ADJUSTED FOR AN INDIVIDUAL'S CIRCUMSTANCES.

ONCE CRADLE PADS ARE IN THEIR FINAL LOCATION, TORQUE 3/8" NUTS ON CRADLE CLAMPS TO 35 FT-LBS AND 1/2" NUTS ON CRADLE CLAMPS TO 70 FT-LBS (FIGURE 2.9).



FOLLOW THESE GUIDELINES FOR USING AND LOCATING THE PONTOON CRADLE PAD BUNKS (FIGURE 2.10).

- THE WIDTH OF THE CRADLE PAD BUNKS SHOULD KEEP THE PONTOONS OFF THE CRADLE BEAMS.
- THE BUNKS SHOULD BE KEPT AS LOW AS POSSIBLE (NOT QUITE TOUCHING THE CLAMP).
- TO PLACE CRADLE PAD BUNKS, FIND CENTER BETWEEN PONTOONS AND CENTER OF THE BOAT FROM PONTOONS AND TRANSLATE MEASUREMENT TO CRADLE BEAM TO DETERMINE CENTER OF EACH PAIR OF CRADLE PAD BUNKS. LOCATE MIDDLE CRADLE PAD BUNKS AROUND CENTER OF CRADLE BEAM.
- THE REAR OF A 21' PONTOON BOAT SHOULD OVERHAND PAST THE LIFT BY 3 FEET. FOR EVERY ADDITIONAL FOOT IN LENGTH OF THE BOAT, IT SHOULD OVERHANG BY AN ADDITIONAL 6 INCHES BEYOND THE REAR OF THE LIFT. THESE ARE GENERAL GUIDELINES THAT CAN BE ADJUSTED FOR AN INDIVIDUAL'S CIRCUMSTANCES.
- ONCE BUNKS ARE IN THEIR FINAL LOCATION, TORQUE 3/8" NUTS ON CRADLE CLAMPS TO 35 FT-LBS AND 5/8" NUTS ON CRADLE CLAMPS TO 70 FT-LBS (FIGURE 2.10).



NOTES

NOTES

