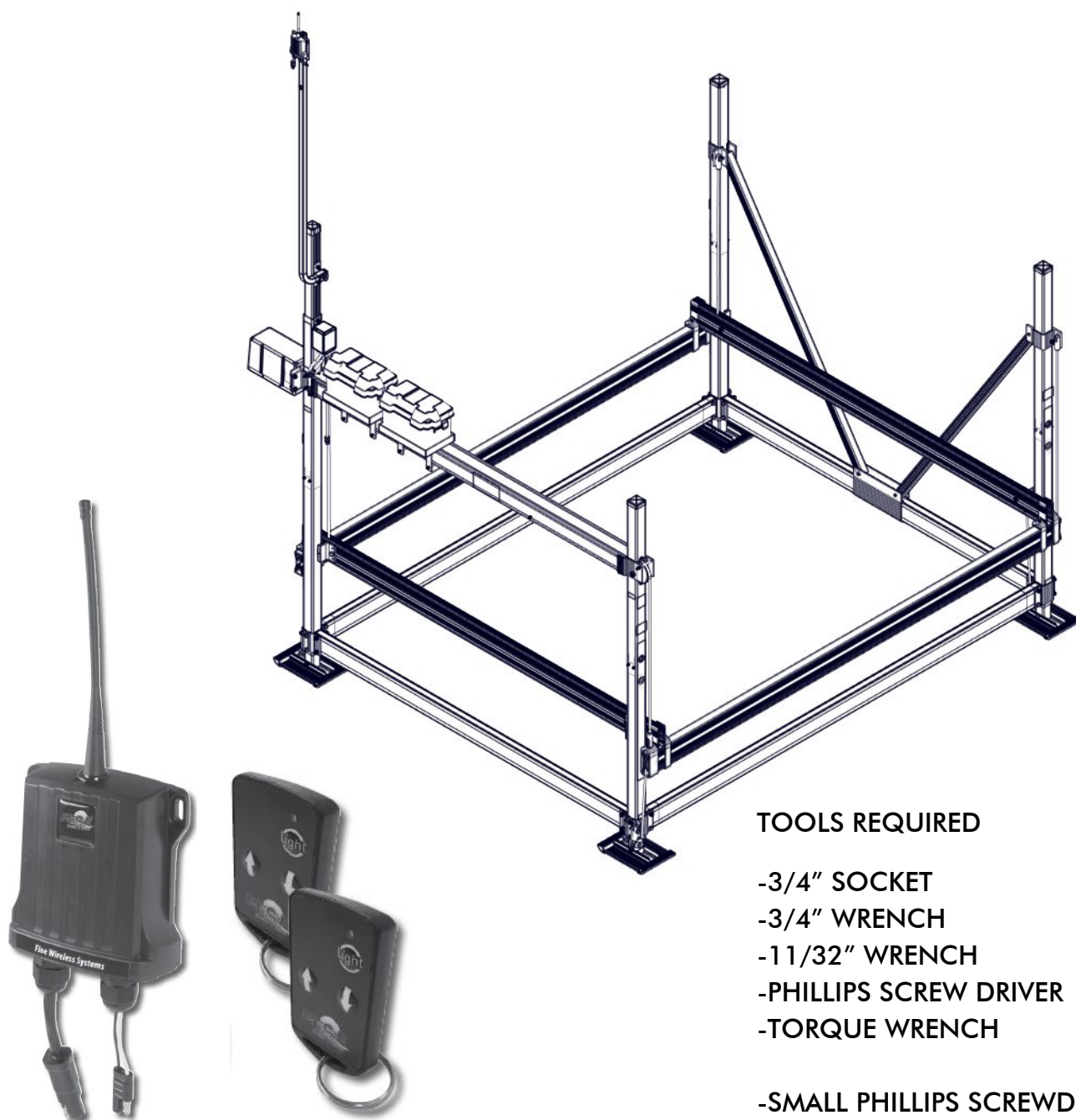


# FLOE WIRELESS TRANSMITTER & REMOTE ASSEMBLY INSTRUCTIONS

KIT P/N 511-00832-00



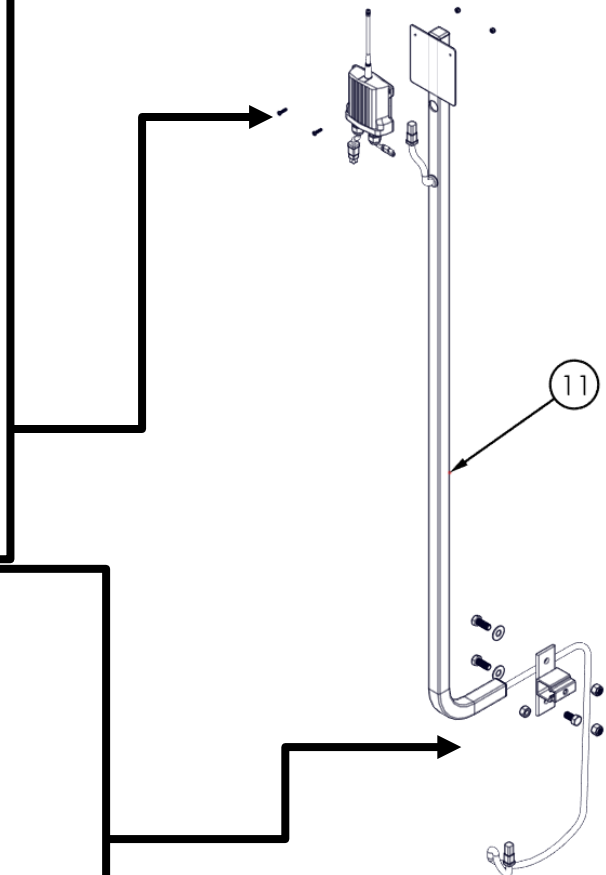
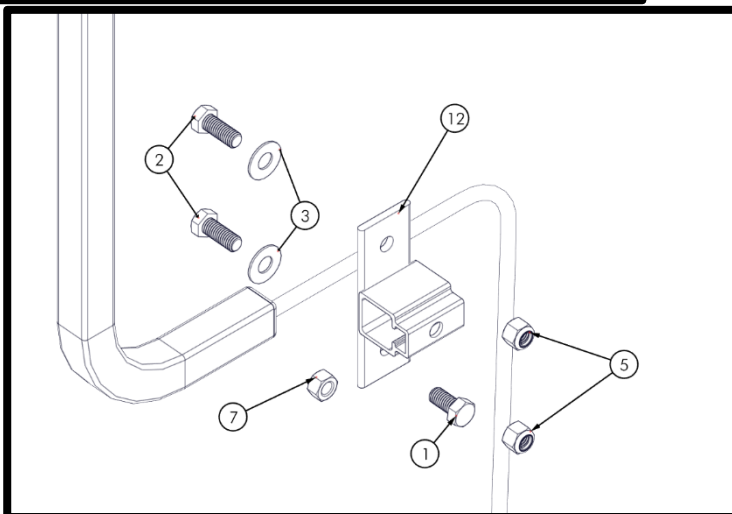
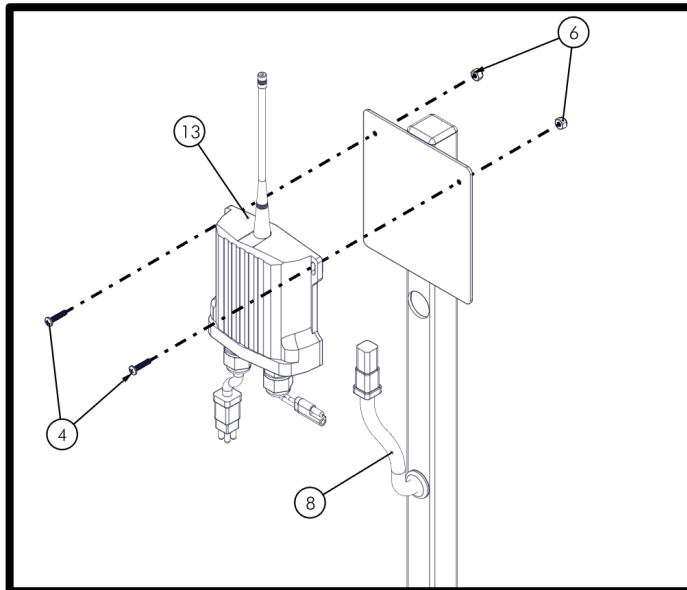
## TOOLS REQUIRED

- 3/4" SOCKET
- 3/4" WRENCH
- 1 1/32" WRENCH
- PHILLIPS SCREW DRIVER
- TORQUE WRENCH
  
- SMALL PHILLIPS SCREWDRIVER  
SET (BATTERY REPLACEMENT)

**\*LIFT FRAME AND CANOPY NOT INCLUDED**

## BILL OF MATERIALS/EXPLODED VIEW

P/N 511-00832-00		KIT, WIRELESS REMOTE	
NUMBER	PART NUMBER	QTY.	DESCRIPTION
1	001-70205-00	1	HHCS, 1/2-13 X 1" 18-8 SS
2	001-70207-00	2	HHCS, 1/2-13 X 1-1/4" 18-8 SS
3	001-71021-00	2	FLAT WASHER, 1/2" 18-8 SS
4	001-72525-00	2	RPHMS, 8-32 X 3/4" SS
5	001-76072-00	2	NUT, NYLOCK 1/2-13 ALUM.
6	001-76209-00	2	NUT, NYLOCK 8-32 ALUM.
7	001-76350-00	1	NUT, 1/2-13 ALUM.
8	007-05287-00	1	WIRELESS RECEIVER EXTENSION
9	007-05294-00	1	PLUG, WIRED REMOTE BYPASS
10	014-02310-00	5 YD	VELCRO, 1/2" DOUBLE SIDE BLACK
11	111-00032-00	1	ASS'Y, RADIO REMOTE MAST
12	111-00122-00	1	WELD'T, BRACKET – MAST MOUNT
13	511-00870-00	1	WIRELESS, RADIO REMOTE & TRANS.



# INSTALLATION

## STEP 1

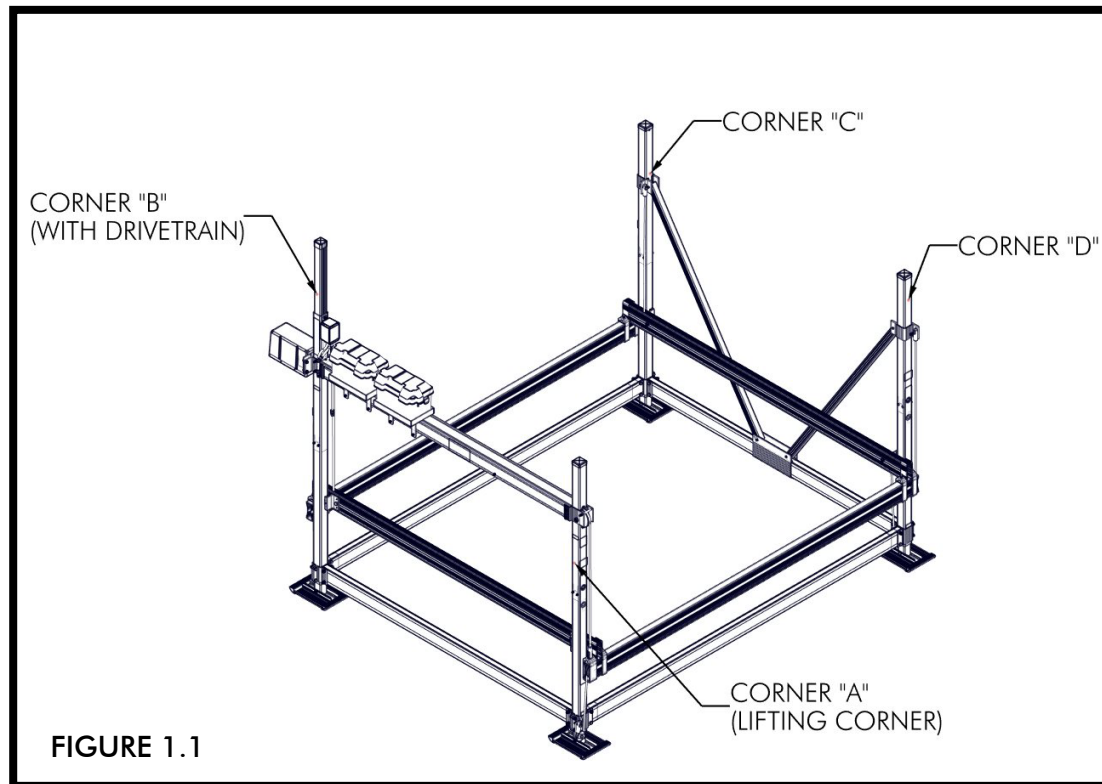
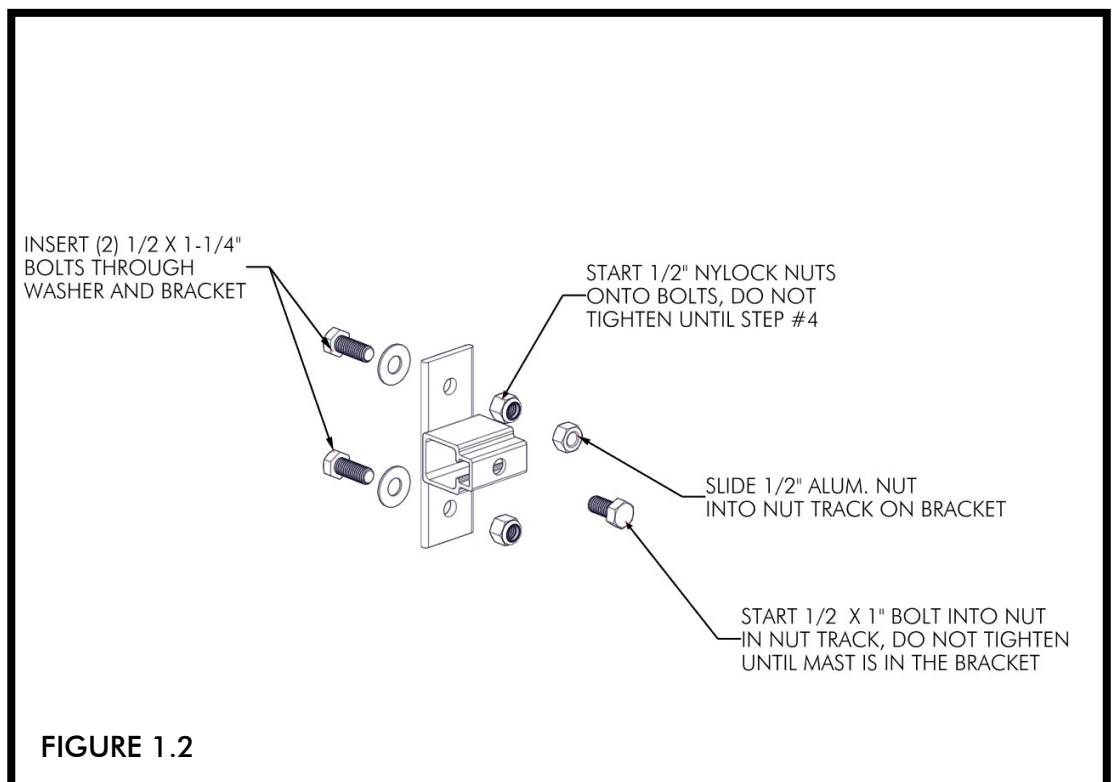


FIGURE 1.1  
SHOWS AN  
OVERVIEW OF  
THE NAMING OF  
EACH CORNER  
POST TO ASSIST  
IN MAST  
PLACEMENT.

FOR TYPICAL  
INSTALLATIONS,  
THE MAST WILL BE  
PLACED ON THE  
CORNER POST  
NEAREST THE LIFT  
DRIVETRAIN  
(CORNER "B").



## STEP 2

### **NOTE:**

FOR LIFTS WITH A CANOPY  
INSTALLED, THE BRACKET  
AND RAIL WILL HAVE TO BE  
REMOVED FROM THE DESIRED  
SUPPORT LEG FOR THIS STEP

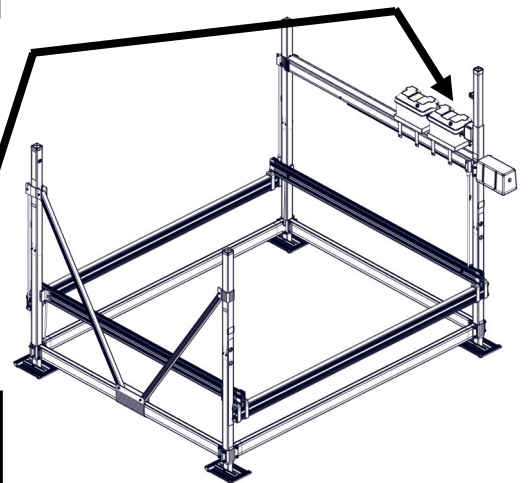
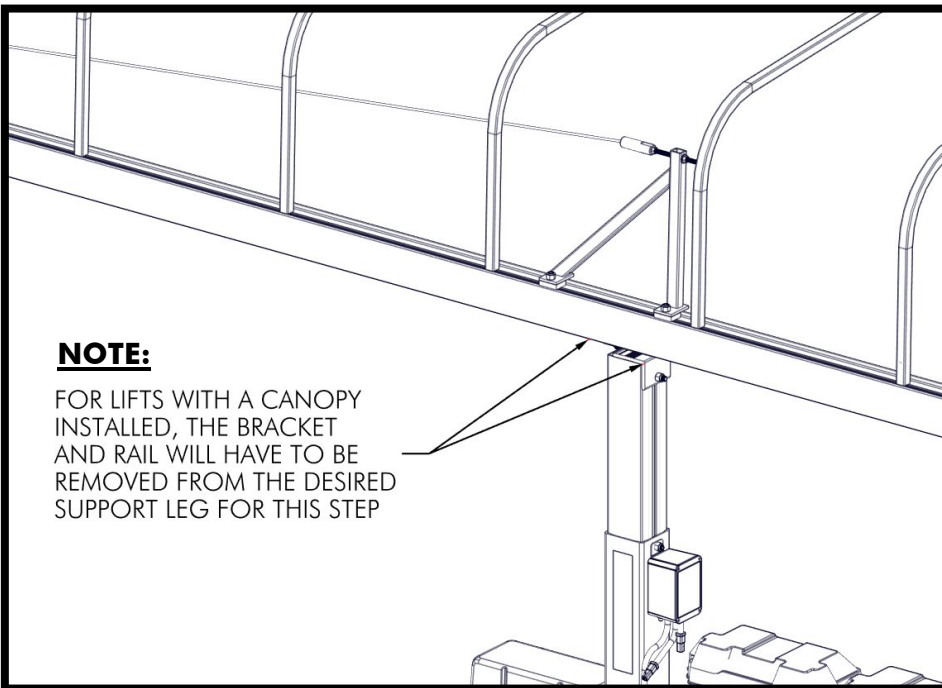
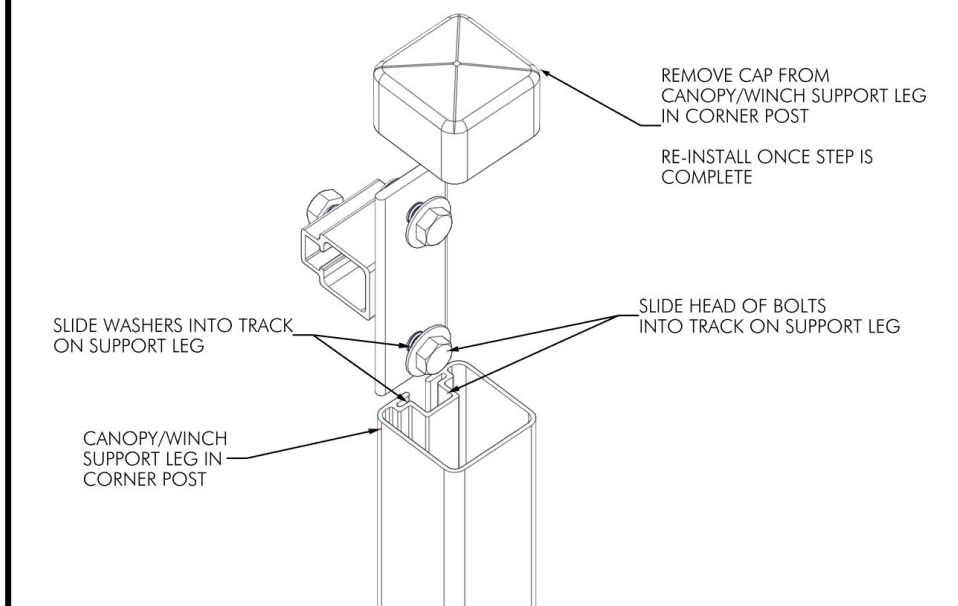


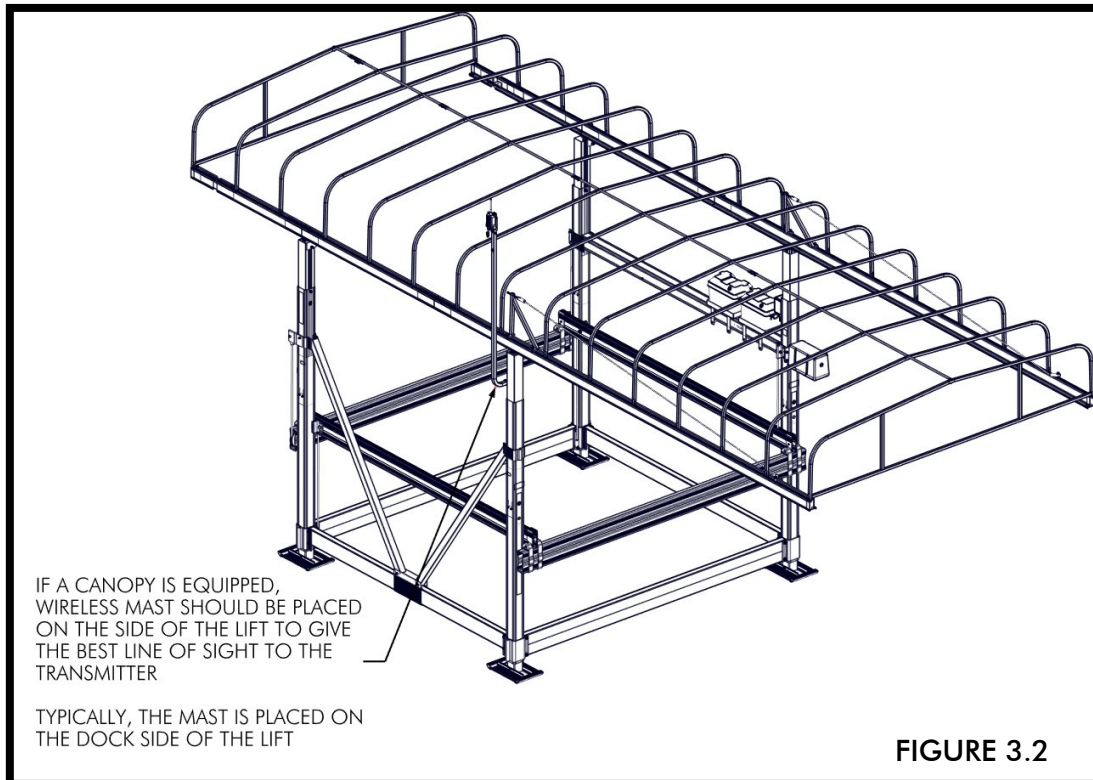
FIGURE 2.1



**NOTE:**  
FOR TYPICAL  
INSTALLATIONS, THE  
WIRELESS MAST WILL BE  
PLACED ON THE  
CORNER POST NEAREST  
THE LIFT DRIVE  
(CORNER POST "B")



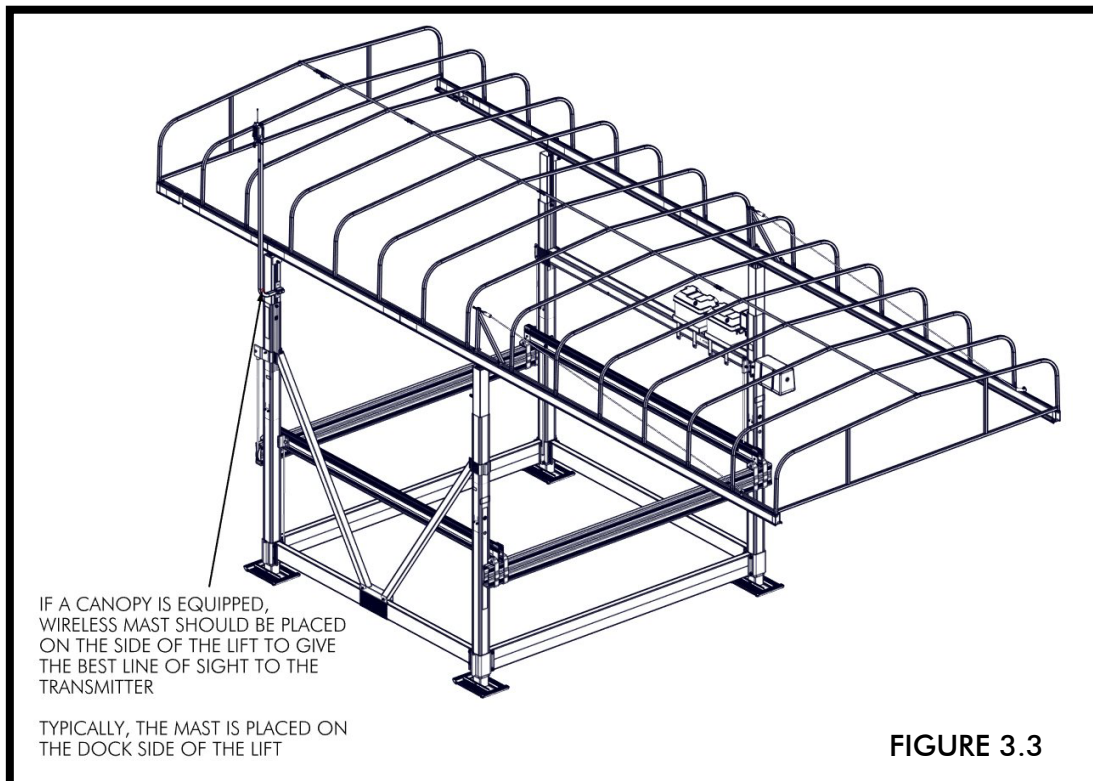
### STEP 3

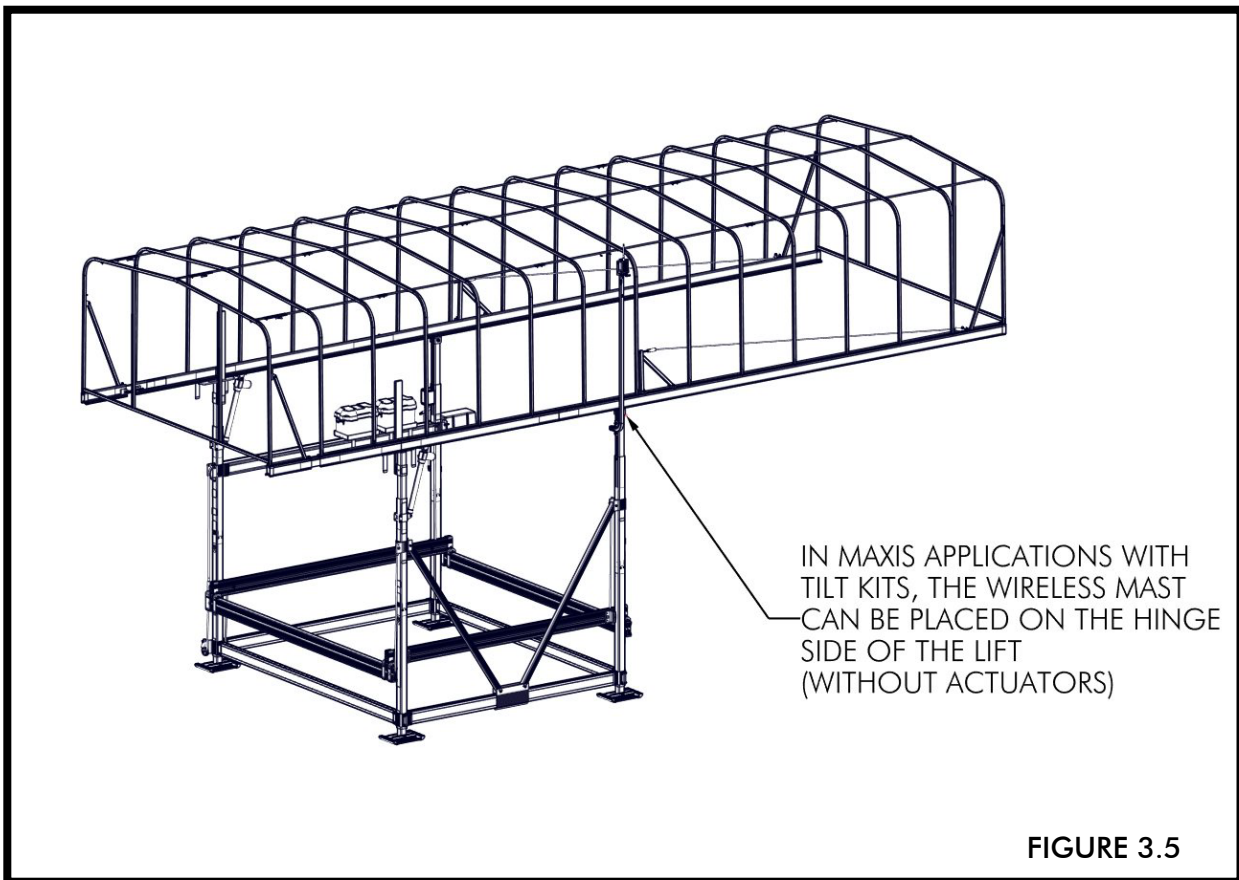
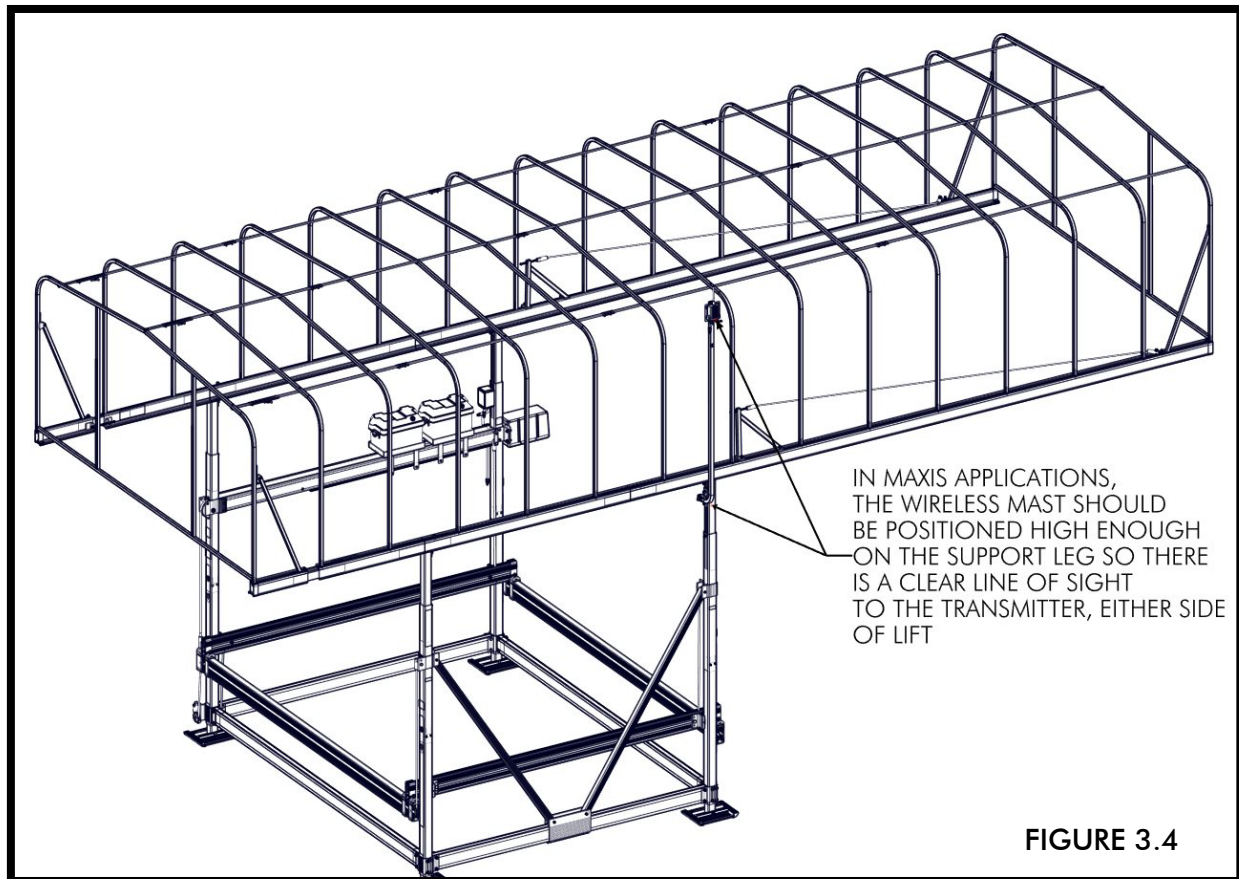


**NOTE:**  
FOR  
INSTALLATIONS  
ON LIFTS WITH  
CANOPIES  
(STANDARD OR  
MAXIS), THE  
WIRELESS MAST  
CAN BE PLACED  
ON ANY ONE  
OF THE CORNER  
POSTS TO GIVE  
THE BEST LINE  
OF SIGHT TO  
THE  
TRANSMITTER,  
TYPICALLY THE  
DOCK SIDE OF  
THE LIFT.

FIGURE 3.2  
SHOWS THE  
MAST ON THE  
"C" POST.

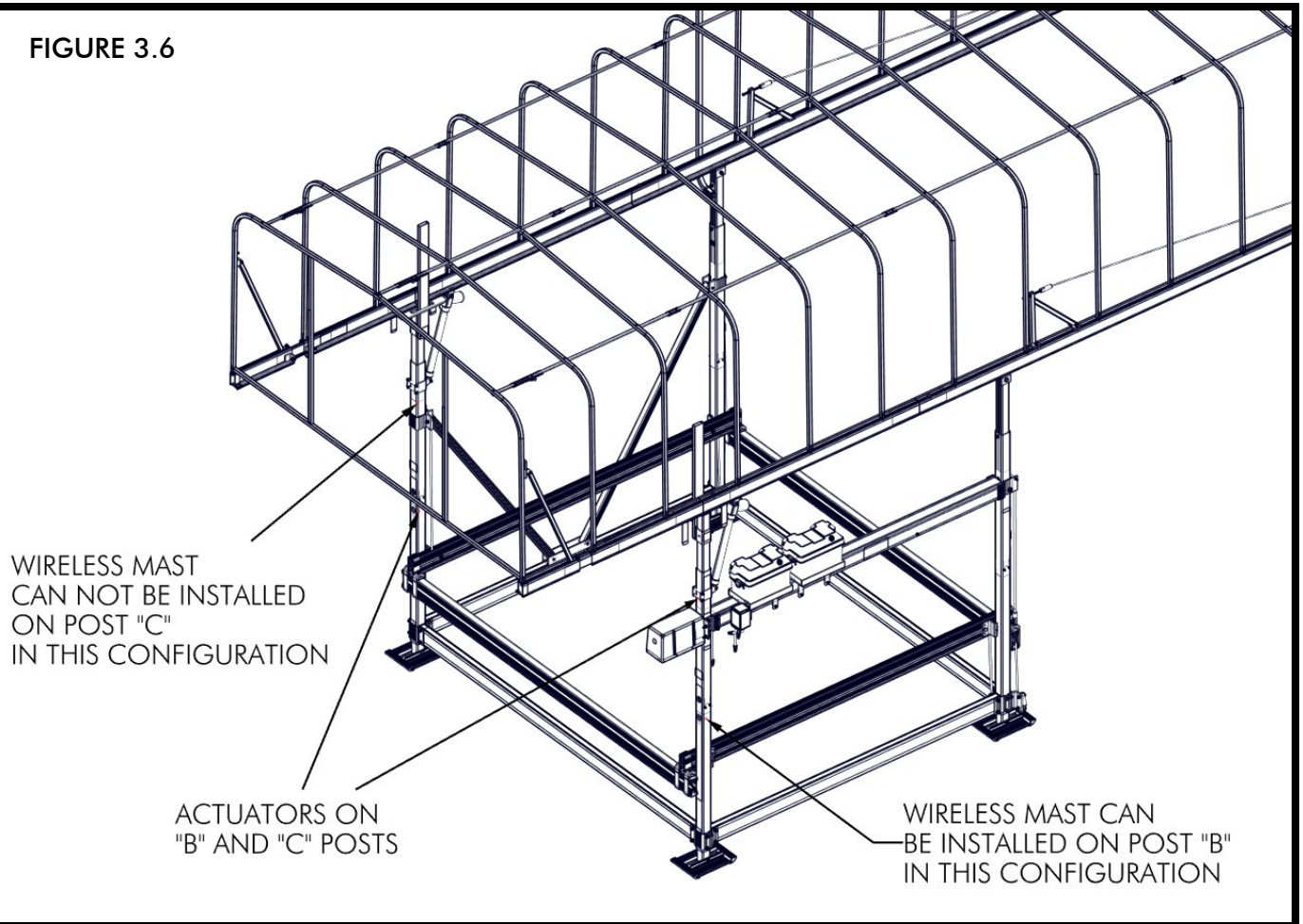
FIGURE 3.3  
SHOWS THE  
MAST ON THE  
"D" POST.





### STEP 3

FIGURE 3.6



**NOTE:**

WIRELESS MAST CAN NOT BE INSTALLED ON THE SAME POST AS ONE WITH A TILT KIT ACTUATOR ON THE V-BRACE SIDE OF THE LIFT (CORNER POST "C" OR "D", DEPENDING ON MAXIS TILT KIT SETUP). WIRING WILL INTERFERE WITH MOVEMENT OF CANOPY.



## STEP 4

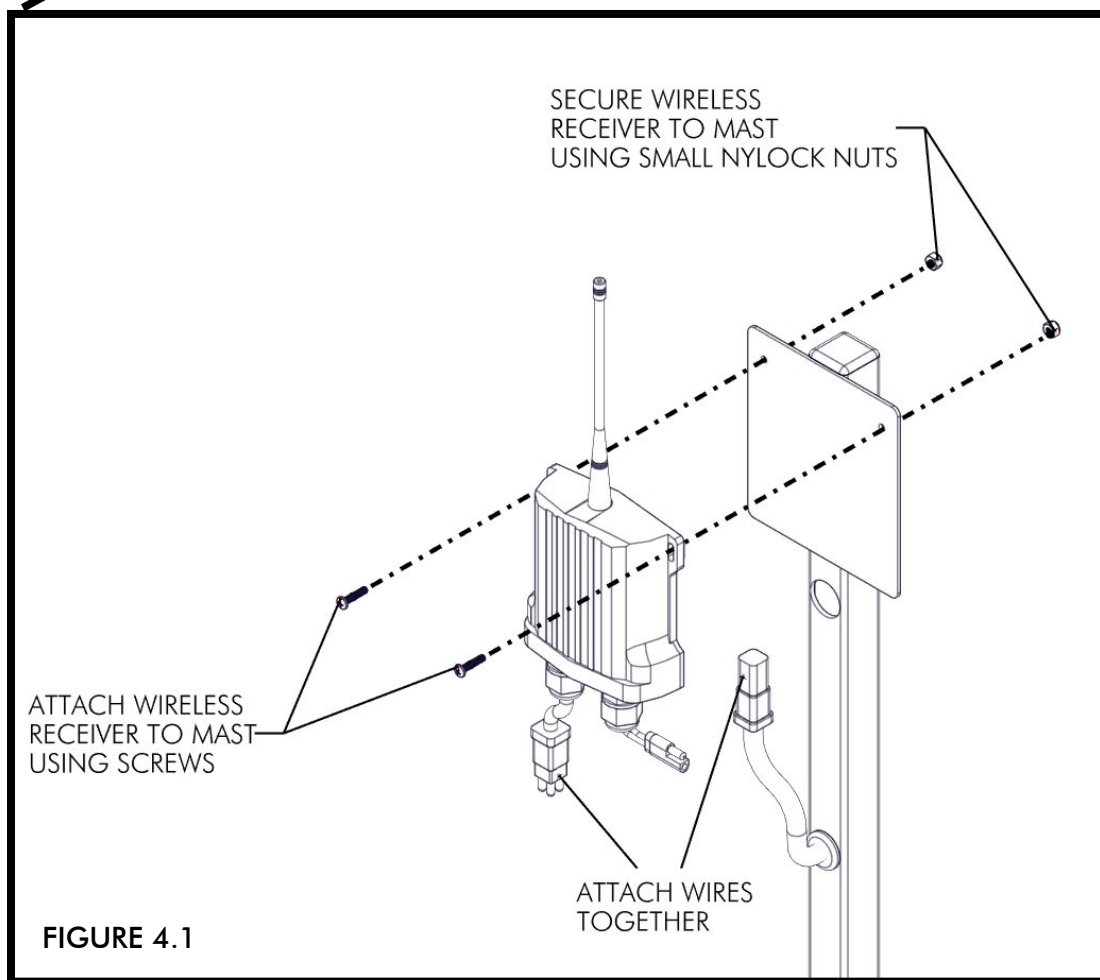
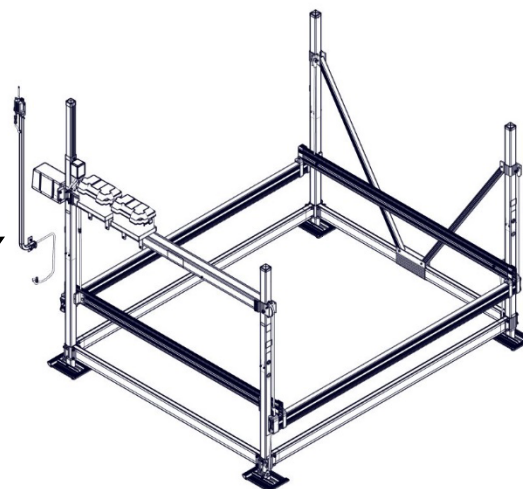


FIGURE 4.1

## STEP 5

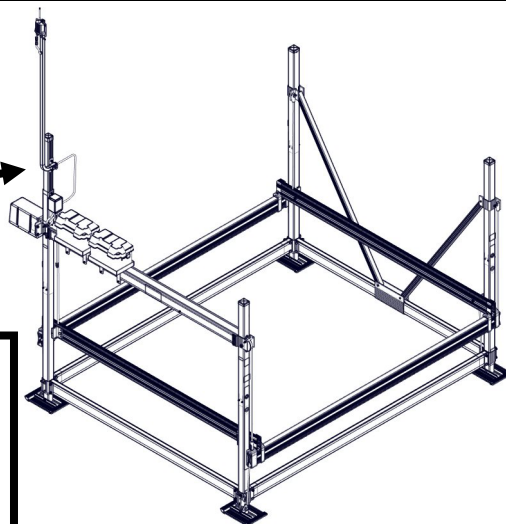
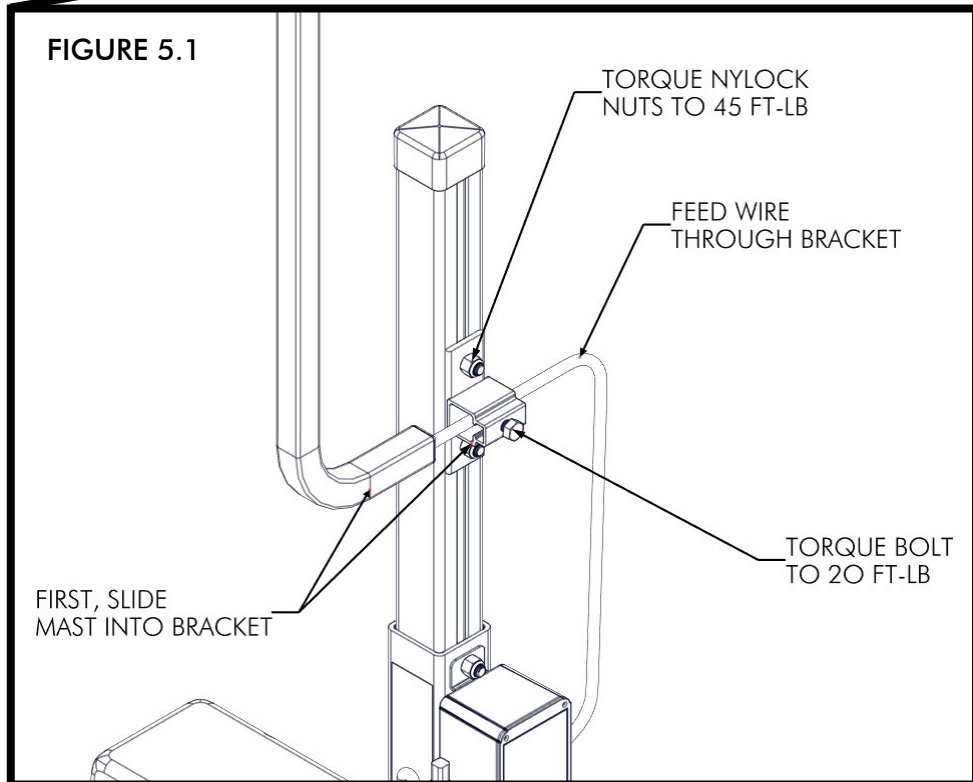
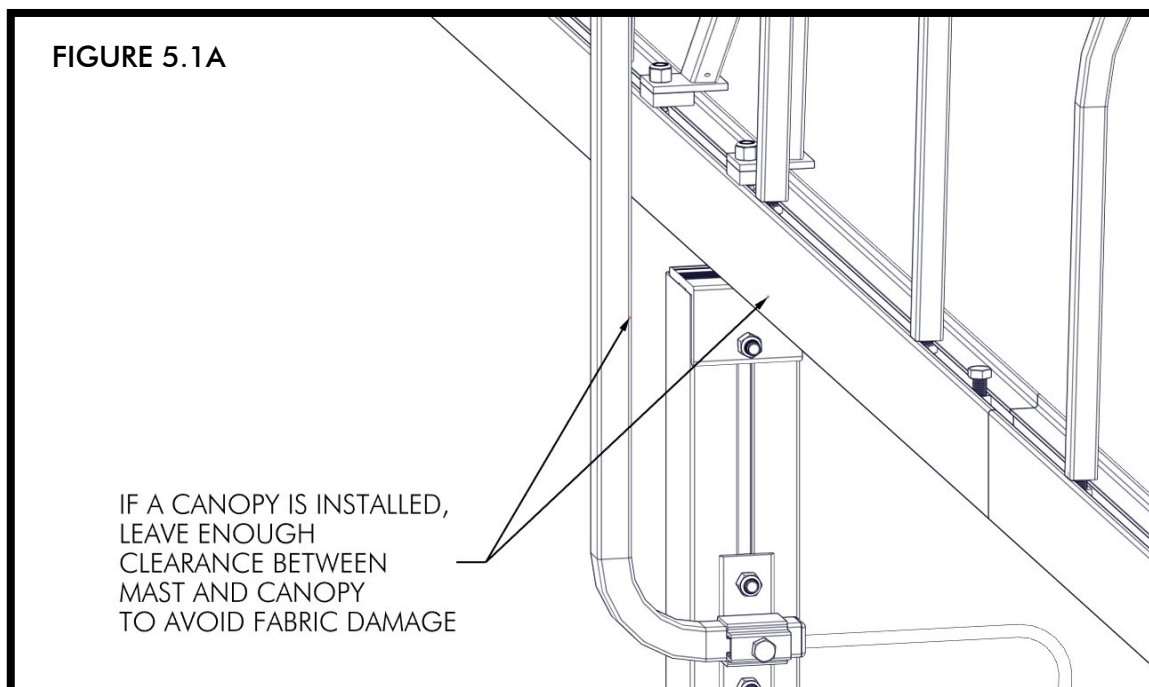


FIGURE 5.1



**NOTE:**  
FOR CANOPY  
INSTALLATIONS, PLACE  
MAST BRACKET HIGH  
ENOUGH ON CANOPY  
SUPPORT LEG TO GIVE  
A CLEAR LINE OF SIGHT  
TO THE TRANSMITTER.

FIGURE 5.1A



## STEP 5

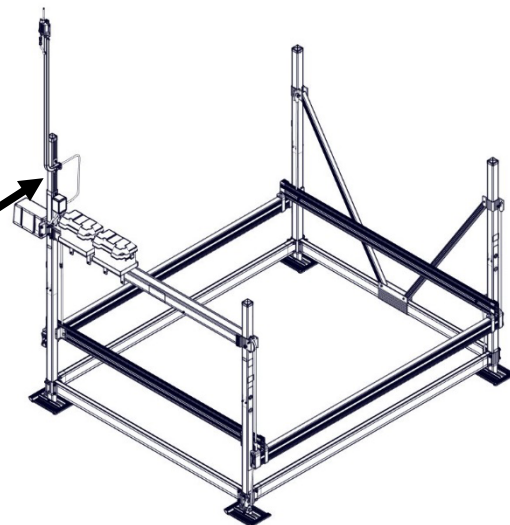
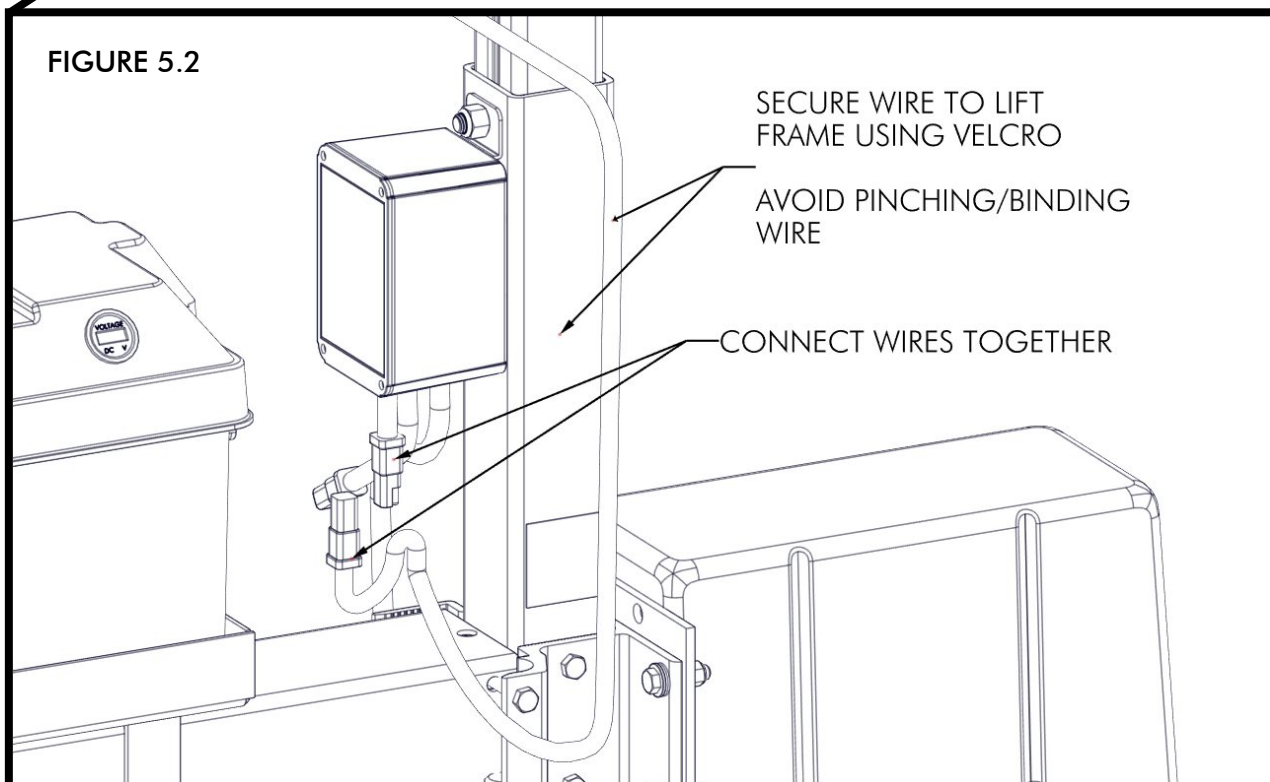


FIGURE 5.2

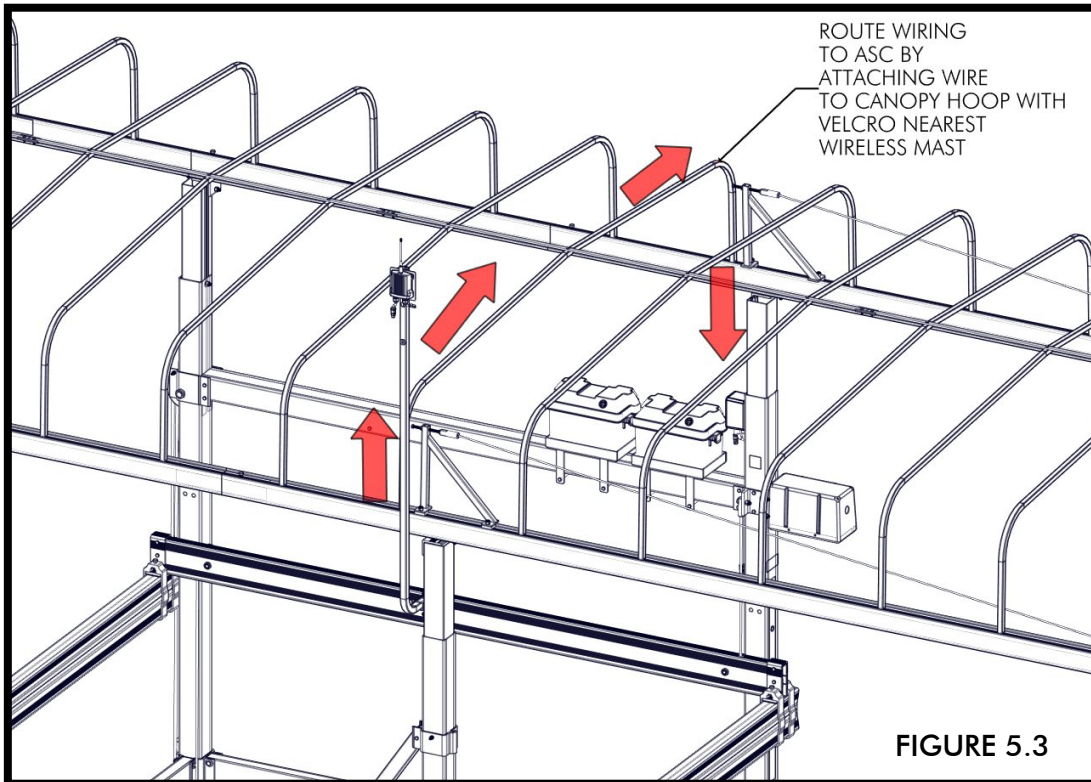




## STEP 5

### NOTE:

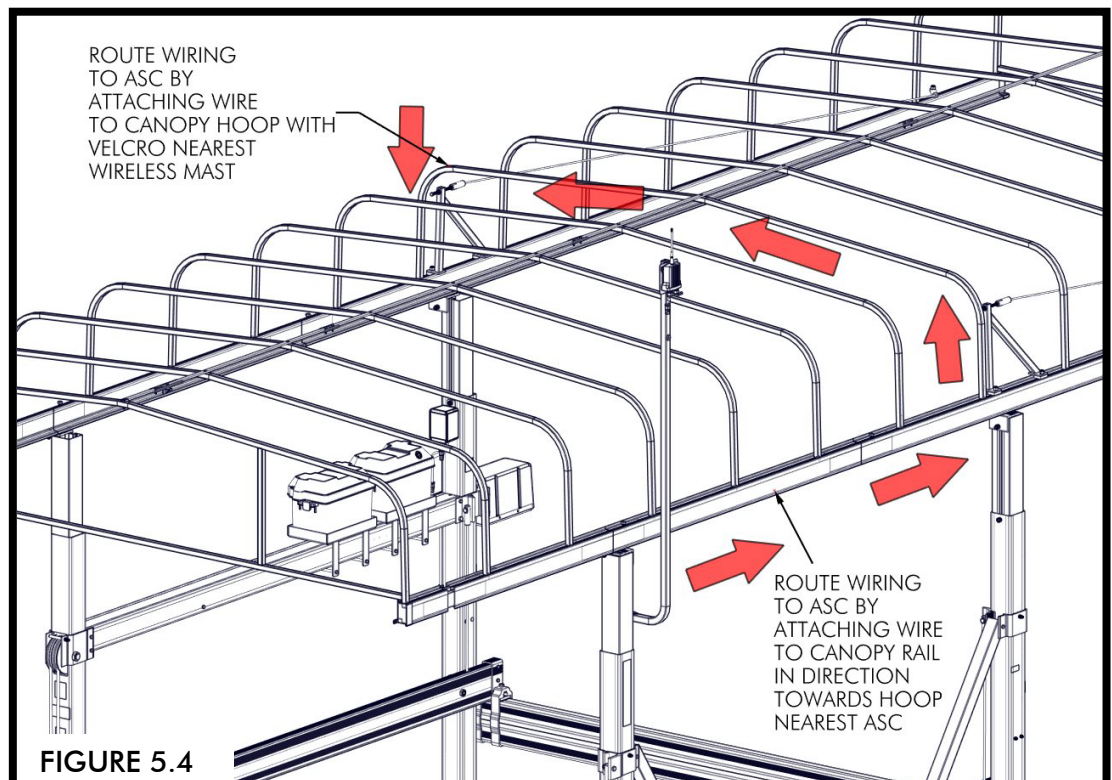
FOR INSTALLATIONS ON LIFTS WITH CANOPIES (STANDARD OR MAXIS), ROUTE WIRING FROM MAST TO ASC USING EXTENSION WIRE. MAY REQUIRE MULTIPLE EXTENSIONS.  
(SOLD SEPARATELY, P/N 007-05374-00, 8 FT LENGTH)



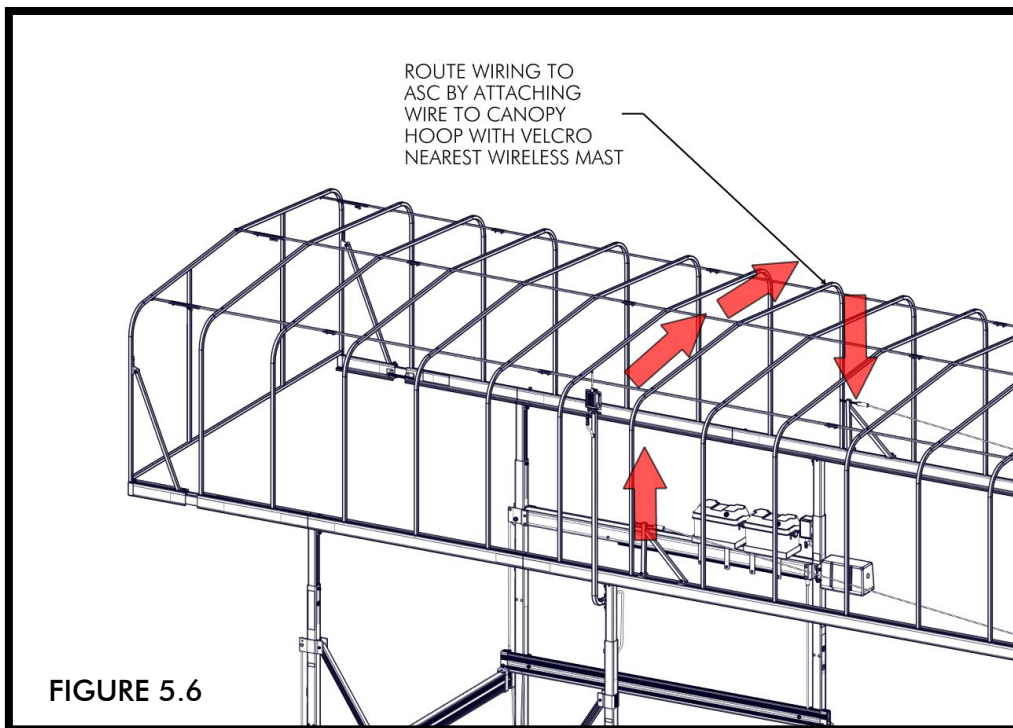
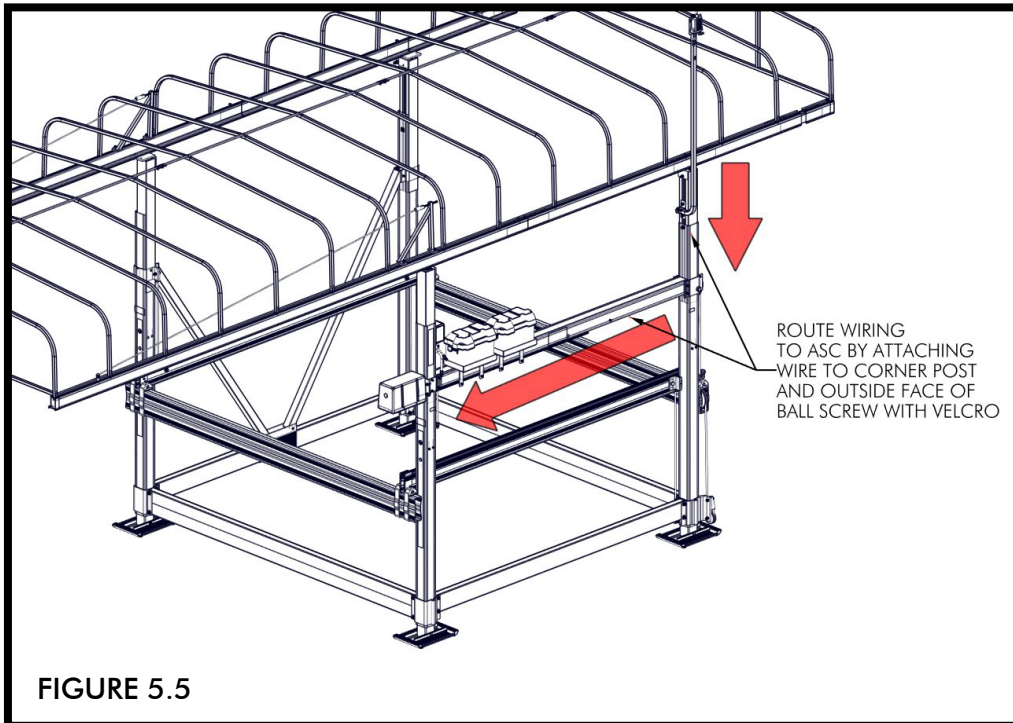
### NOTE:

IF INSTALLING ON THE "C" POST, SEE FIGURE 5.3

IF INSTALLING ON THE "D" POST, SEE FIGURE 5.4

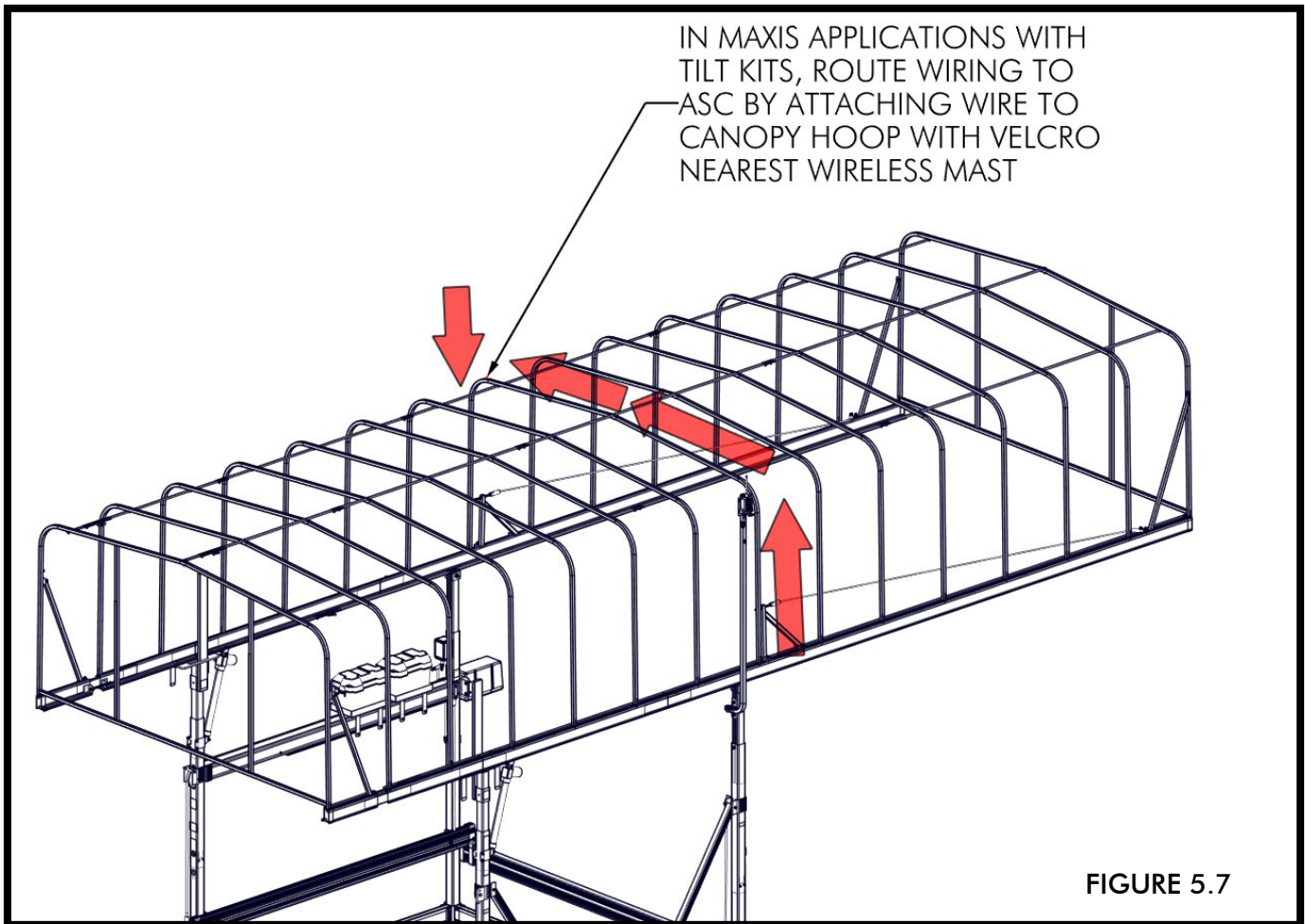


## STEP 5



**NOTE:**  
WIRE ROUTING FROM CORNER "A" IS SHOWN IN FIGURE 5.5. WIRE ROUTING FROM CORNER "C" IS SHOWN IN FIGURE 5.6.

## STEP 5



### NOTE:

FOR MAXIS TILT KIT APPLICATIONS INSTALLED IN THE STANDARD CONFIGURATION (ACTUATORS INSTALLED ON "A" AND "D" POSTS).

WIRE ROUTING FROM CORNER "C" IS SHOWN. REFER TO FIGURES 5.1 AND 5.2 ON WIRE ROUTING ON THE "B" POST.

REFER TO FIGURE 5.5 ON WIRE ROUTING FROM THE "A" POST.

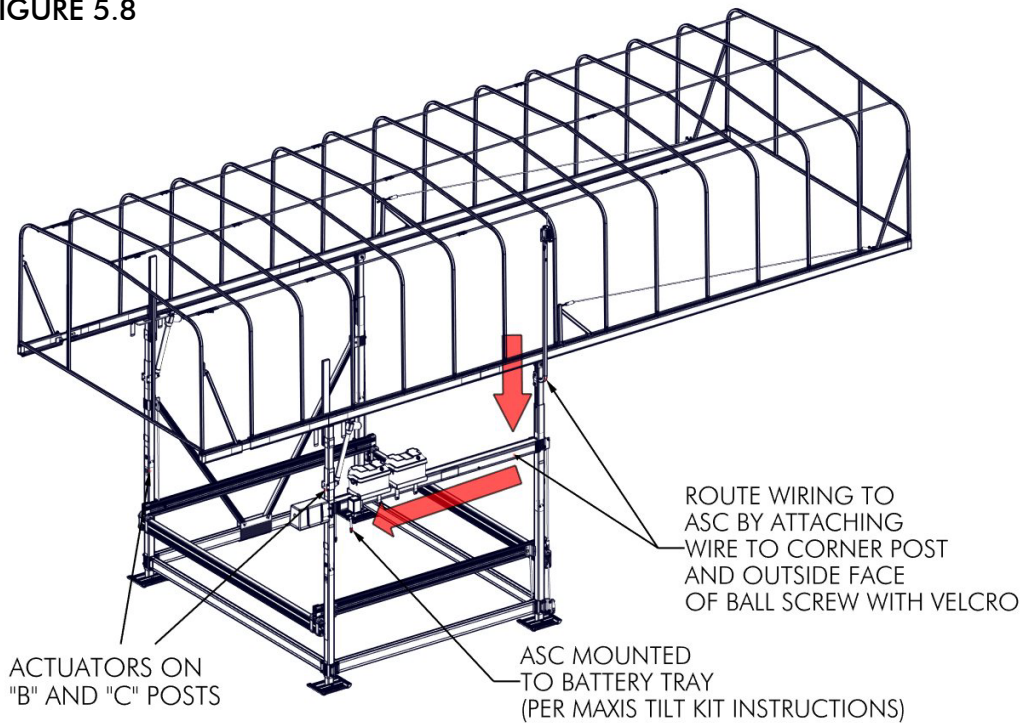
### NOTE:

WIRELESS MAST CAN NOT BE INSTALLED ON THE SAME POST AS ONE WITH A TILT KIT ACTUATOR ON THE V-BRACE SIDE OF THE LIFT (CORNER POST "C" OR "D", DEPENDING ON MAXIS TILT KIT SETUP). WIRING WILL INTERFERE WITH MOVEMENT OF CANOPY.



## STEP 5

FIGURE 5.8



### NOTE:

FOR MAXIS TILT KIT APPLICATIONS INSTALLED IN THE ALTERNATE CONFIGURATION (ACTUATORS INSTALLED ON "B" AND "C" POSTS)

IF INSTALLING ON THE "A" POST, SEE FIGURE 5.8

IF INSTALLING ON THE "D" POST, SEE FIGURE 5.9

IF INSTALLING ON THE "B" POST, SEE FIGURES 5.1 AND 5.2

ROUTE WIRING TO ASC BY ATTACHING WIRE TO CANOPY HOOP WITH VELCRO NEAREST WIRELESS MAST

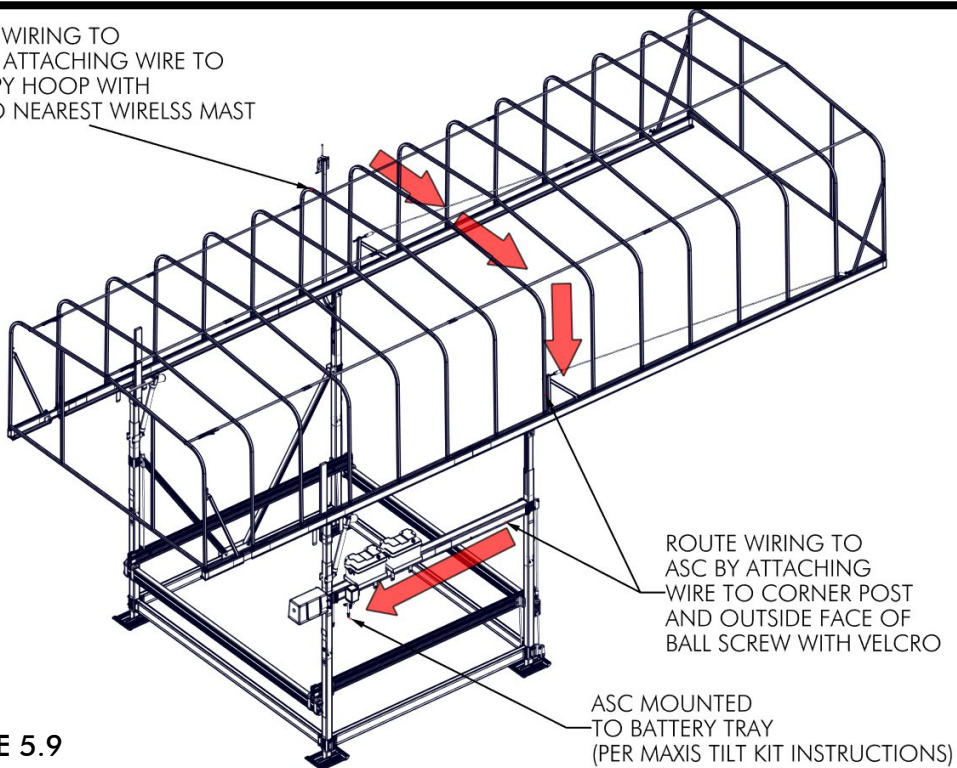
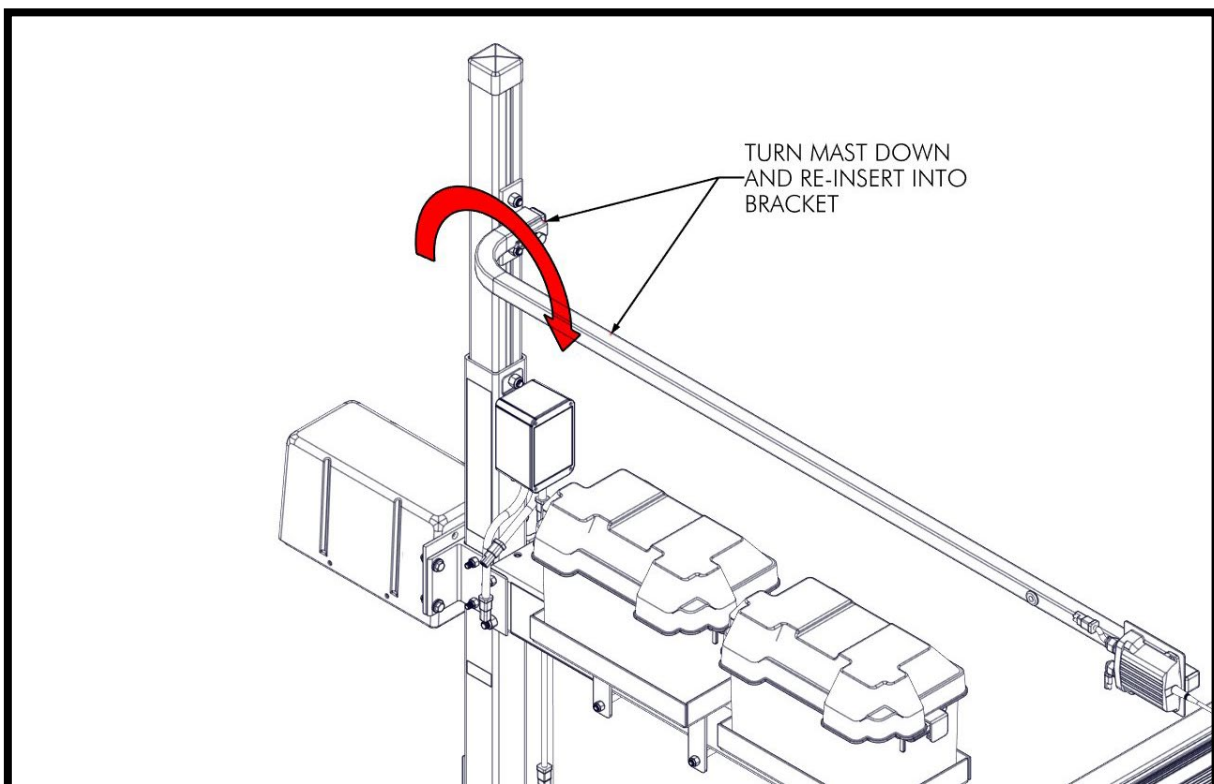
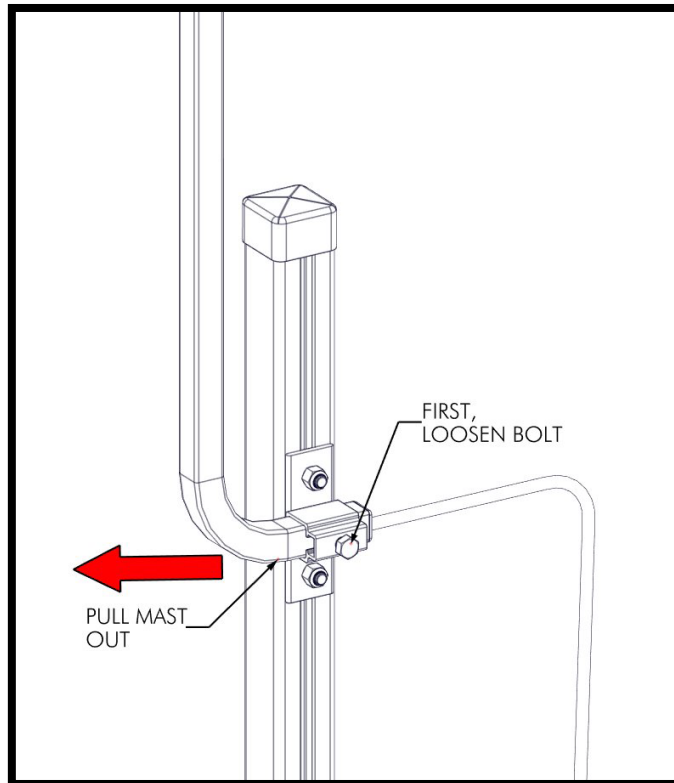


FIGURE 5.9

## **WIRELESS REMOTE REPROGRAMMING – MAST SETUP**

-TO PREPARE A REMOTE RECEIVER FOR REPROGRAMMING, FOLLOW THIS PROCEDURE. REVERSE ORDER FOR RE-INSTALLATION.



## **WIRELESS REMOTE PROGRAMMING – PAIRING RECEIVER TO TRANSMITTER FOB**





## **REMOTE BATTERY REPLACEMENT – OLDER STYLE**

A CR2032 3V COIN BATTERY IS USED

A SMALL PHILLIPS SCREWDRIVER IS REQUIRED TO REPLACE THE REMOTE BATTERY

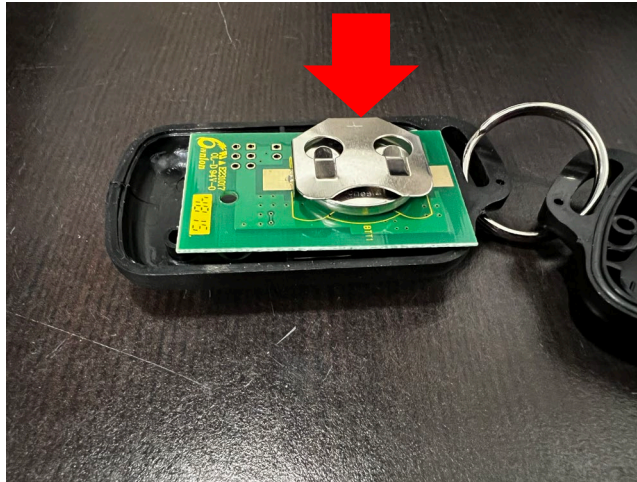
FOR OLDER STYLE REMOTES,



-REMOVE THE PHILLIPS SCREWS HOLDING THE BACK COVER ON THE REMOTE AND REMOVE THE COVER



-REMOVE THE BATTERY FROM THE CIRCUIT BOARD BY PUSHING ON THE BATTERY ON THE SIDE INDICATED



-INSTALL THE NEW BATTERY BY PUSHING IT INTO THE HOLDER, POSITIVE SIDE OF THE BATTERY UP



-RE-INSTALL THE COVER AND SCREWS



## **REMOTE BATTERY REPLACEMENT – CURRENT STYLE**

A CR2032 3V COIN BATTERY IS USED

A SMALL PHILLIPS SCREWDRIVER IS REQUIRED TO REPLACE THE REMOTE BATTERY

FOR CURRENT STYLE REMOTES.



-REMOVE THE PHILLIPS SCREWS HOLDING THE BACK COVER ON THE REMOTE AND REMOVE THE COVER





-REMOVE THE BATTERY FROM THE REMOTE



-INSTALL THE NEW BATTERY INTO THE REMOTE, POSITIVE SIDE OF THE BATTERY UP



-RE-INSTALL THE COVER AND SCREWS

