

FLOE SINGLE WATER ACCESSORY RACK

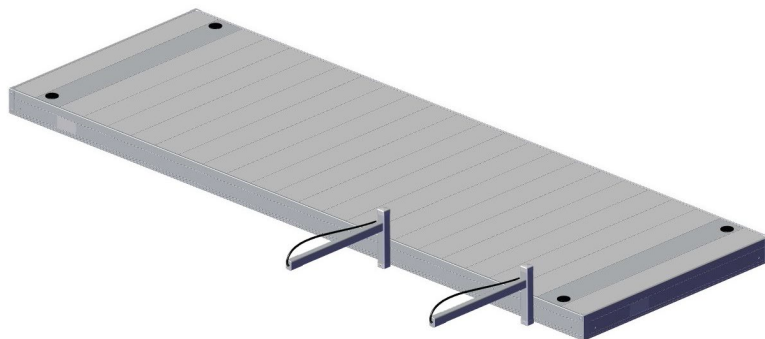
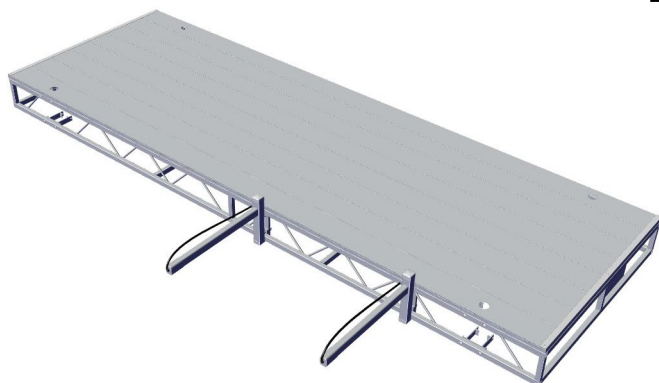
KIT – RACK, SINGLE WATER ACCESSORY

ASSEMBLY INSTRUCTIONS

P/N: 510-41570-00



SCAN QR CODE BELOW FOR LINK TO ASSEMBY VIDEO
(ALSO COVERS ATTACHMENT TO QUICK ATTACH
SECTIONAL DOCK)



NOTE:
FOR QUICK ATTACH DOCKS, 510-02572-00
KIT, QA BRKT. VERT. BUMPER/WATER ACCESSORY
IS REQUIRED

TOOLS REQUIRED
-(2) 9/16"
SOCKETS/WRENCHES
-TORQUE WRENCH
-TAPE MEASURE
-CORDLESS DRILL
-3/8" DRILL BIT

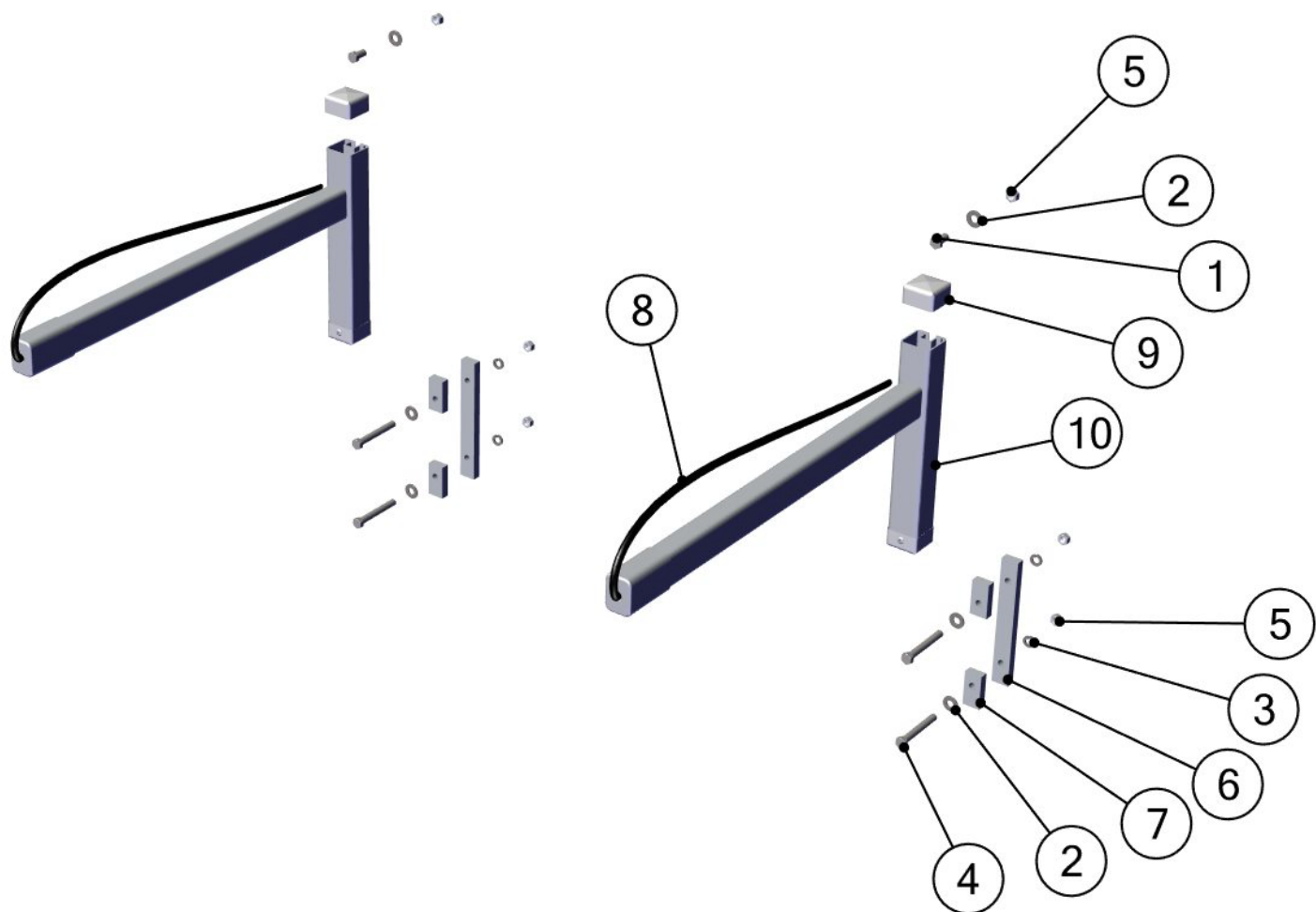
INSTRUCTION P/N: 610-41570-00

RELEASED: 11/30/21

© Manufactured by:
Floe International Inc.
48473 State Hwy. 65
McGregor, MN 55760
www.floeintl.com

BILL OF MATERIALS/ EXPLODED VIEW

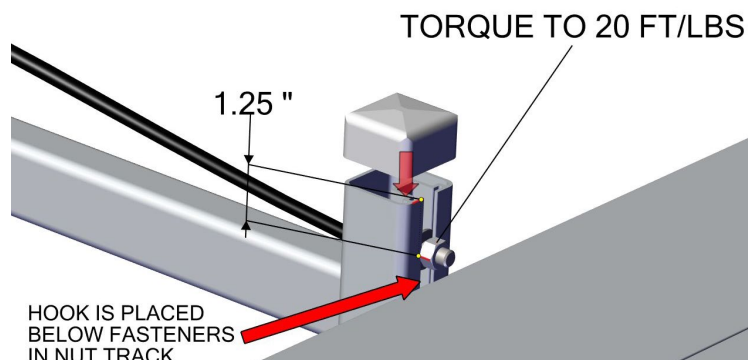
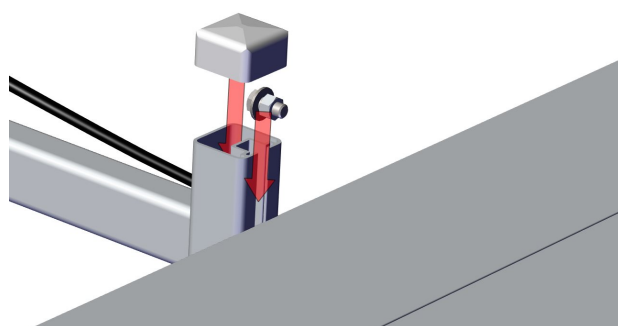
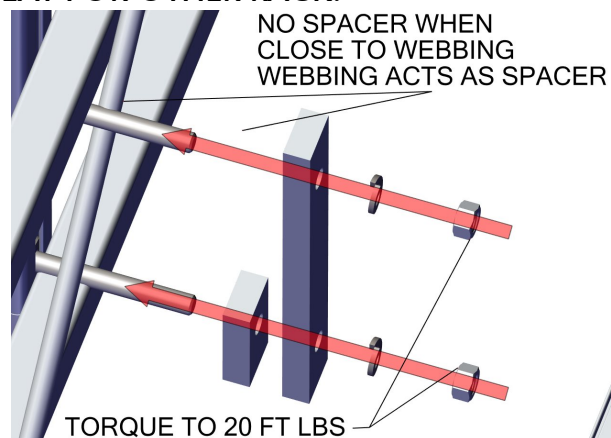
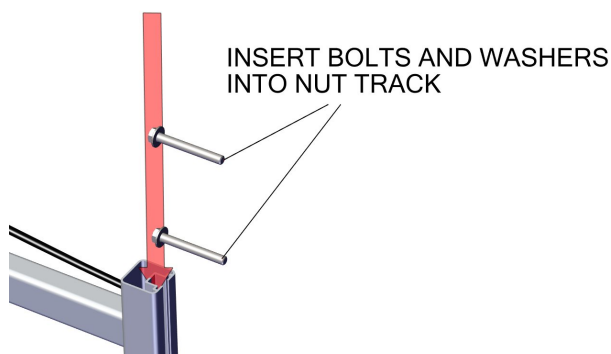
P/N 510-41570-00		RACK, SINGLE WATER ACCESSORY	
NUMBER	PART NUMBER	DESCRIPTION	QTY.
1	001-70103-00	HHCS, 3/8-16 X 3/4" 18-8 SS	4
2	001-71017-00	FLATWASHER, 3/8" SAE SS 18-8	8
3	001-71067-00	LOCKWASHER, 3/8" S/W SS 18-8	4
4	001-71191-00	HHCS, 3/8-16 X 3" SS FULL THREAD	4
5	001-76349-00	NUT, 3/8-16 ALUM	8
6	002-02203-00	PLATE, DOCK ACCESSORY	2
7	002-02204-00	SPACER, DOCK ACCESSORY	4
8	010-00100-00	SHOCK CORD, LOOP AND HOOK	2
9	010-00310-00	CAP, GREY 1.7 X 1.7 X 1 W/ VHB	2
10	110-00123-00	ASS'Y, SINGLE WATER ACCESSORY RACK (INCLUDES ITEM #8 & 9)	2



INSTALLATION

ROLL-IN DOCK ATTACHMENT

- PLACE 2 FLATWASHERS (001-71017-00) ONTO 2 3" FULL THREAD BOLTS (001-71191-00).
- INSERT FULL THREAD BOLTS AND WASHERS INTO THE NUT TRACK OF THE RACK (110-00123-00).
- SLIDE THE BOLTS THROUGH THE DOCK SIDE. SLIDE SPACERS (002-02203-00) AND A PLATE (002-02204-00) ONTO THE BOLTS.
- **NOTE: NO SPACER IS USED IF WEBBING IS CLOSE TO THE BOLT. WEBBING ACTS AS SPACER.**
- SLIDE LOCKWASHERS (001-71067-00) OVER THE BOLTS AND SECURE WITH ALUMINUM NUTS (001-76349-00).
- **TORQUE TO 20 FT/LBS.**
- INSERT BOLT AND WASHERS INTO THE NUT TRACK FROM THE TOP. SECURE WITH AN ALUMINUM NUT ~1.25" FROM THE TOP OF THE RACK. **TORQUE TO 20 FT/LBS. HOOK ON SHOCK CORD IS PLACED BELOW FASTENERS IN NUT TRACK.**
- PLACE CAPS OVER ON RACK TOP.
- DECIDE SPACING FOR SUPPORTS AND REPEAT FOR OTHER RACK.



SECTIONAL DOCK ATTACHMENT

- DRILL 4 3/8" HOLES INTO THE SIDE OF THE SECTIONAL DOCK, USING THE 2 UPPER INDICATOR LINES AS GUIDES. SPACE THE HOLES AT THE DESIRED WIDTH OF THE RACK.
- PLACE 2 FLATWASHERS (001-71017-00) ONTO 2 3" FULL THREAD BOLTS (001-71191-00).
- INSERT FULL THREAD BOLTS AND WASHERS INTO THE NUT TRACK OF THE RACK (911-18705-00).
- SLIDE THE BOLTS THROUGH THE DOCK SIDE HOLES.
- SLIDE LOCKWASHERS (001-71067-00) OVER BOLTS AND SECURE WITH ALUMINUM NUTS (001-76349-00). **TORQUE TO 20 FT/LBS.**
- INSERT BOLT AND WASHERS INTO THE NUT TRACK FROM THE TOP. SECURE WITH NUTS ~1.25" FROM THE TOP OF THE RACK. **TORQUE TO 20 FT/LBS.**
HOOK ON SHOCK CORD IS PLACED BELOW FASTENERS IN NUT TRACK.
- PLACE CAPS OVER ON RACK TOPS.
- DECIDE SPACING FOR SUPPORTS AND REPEAT FOR OTHER RACK.

