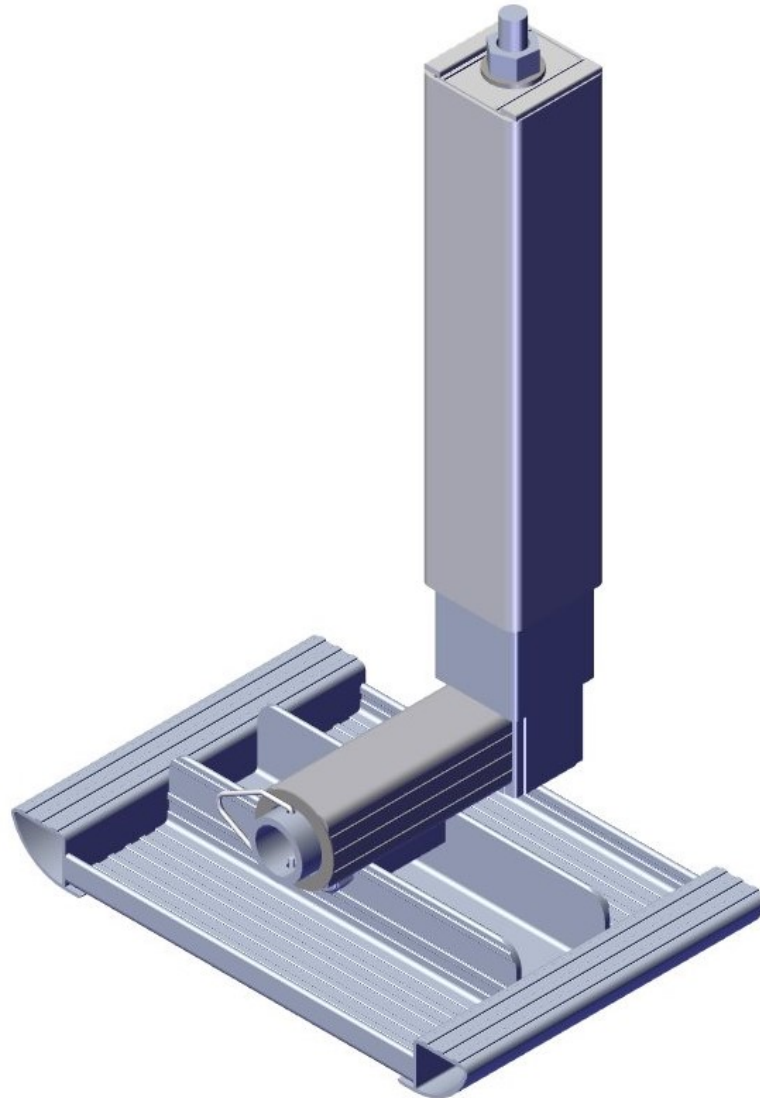


**STATIONARY DOCK SAND PAD
ASSEMBLY INSTRUCTIONS
510-17000-00**



TOOLS REQUIRED

- TORQUE WRENCH
- 3/4" SOCKET

FOR WHEEL KITS PRIOR TO 2001

- DRILL
- 7/32" BIT

INSTRUCTION P/N: 610-17000-00
ISSUED: 5/16/2018

SHEET 1 OF 2

© Manufactured by:
Floe International Inc.
48473 State Hwy. 65
McGregor, MN 55760
www.floeintl.com

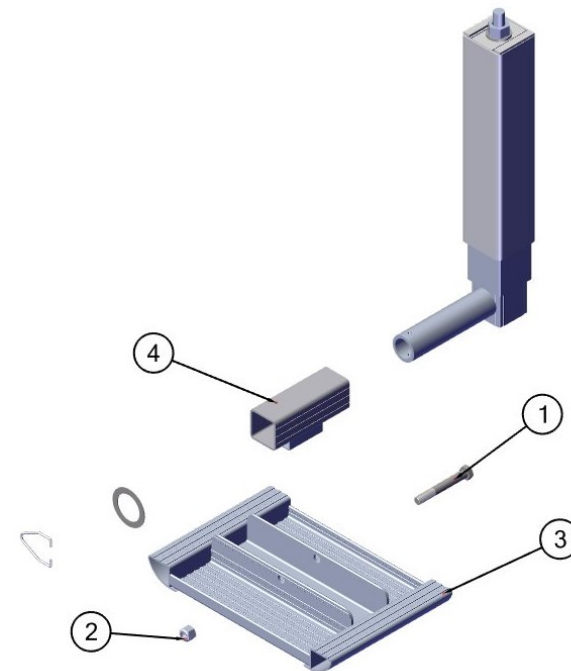
STATIONARY DOCK SAND PAD

EXPLODED VIEW

ITEM	QTY	PART NUMBER	DESCRIPTION
1	1	001-70218-00	HHCS, ½-13 x 3 ¾" 18-8 ss
2	1	001-76072-00	NUT, NYLOCK ½-13 ALUM.
3	1	111-00000-00	SAND PAD WELDMENT
4	1	110-17000-01	WELD'T, DOCK SAND PAD MOUNT

NOTE:

FOR WHEEL KITS PRIOR TO 2001, YOU MAY HAVE TO DRILL AN ADDITIONAL 7/32" HOLE ¼" BEYOND THE EXISTING HOLE ON THE OUTER END OF THE LEG SPINDLE.



STEP 1

- TORQUE ½-13 NYLOCK NUT TO 25 FT-LBS (FIG. 1)
- SLIDE ASSEMBLY ON LEG SPINDLE (FIG. 2)
- SLIP WASHER OVER SPINDLE AND INSERT CLIP INTO HOLES IN END OF SPINDLE (FIG. 2)

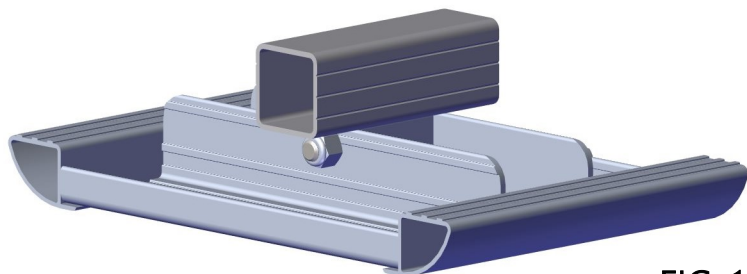


FIG. 1

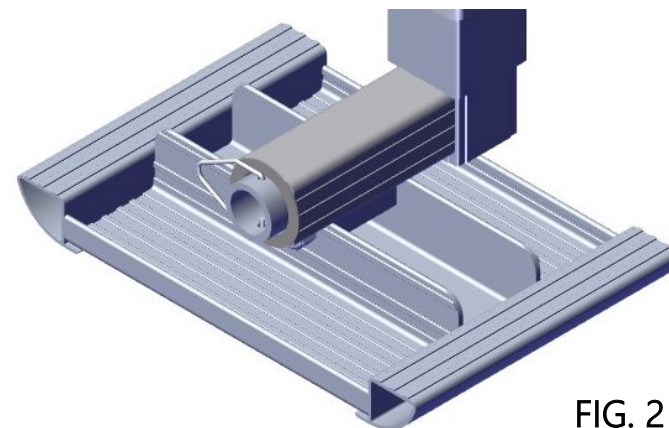


FIG. 2