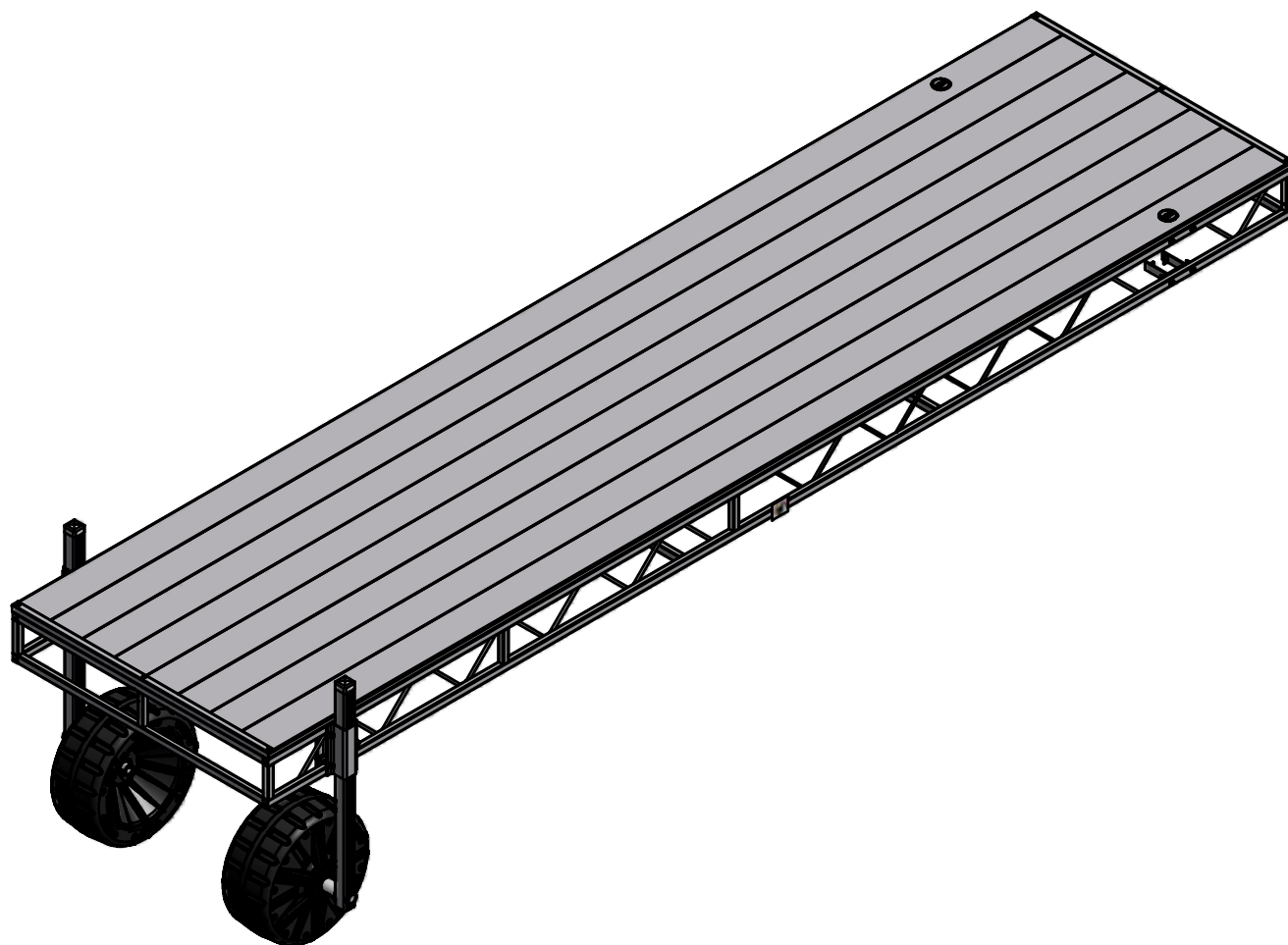


FLOE SHORE END WHEEL KIT ASSEMBLY INSTRUCTIONS

KIT P/N 510-07105-00



WHEELS MAY BE POSITIONED SO THAT THEY ARE
EITHER UNDER THE DOCK (INBOARD) AS SHOWN,
OR ON THE OUTSIDE OF THE DOCK (OUTBOARD).

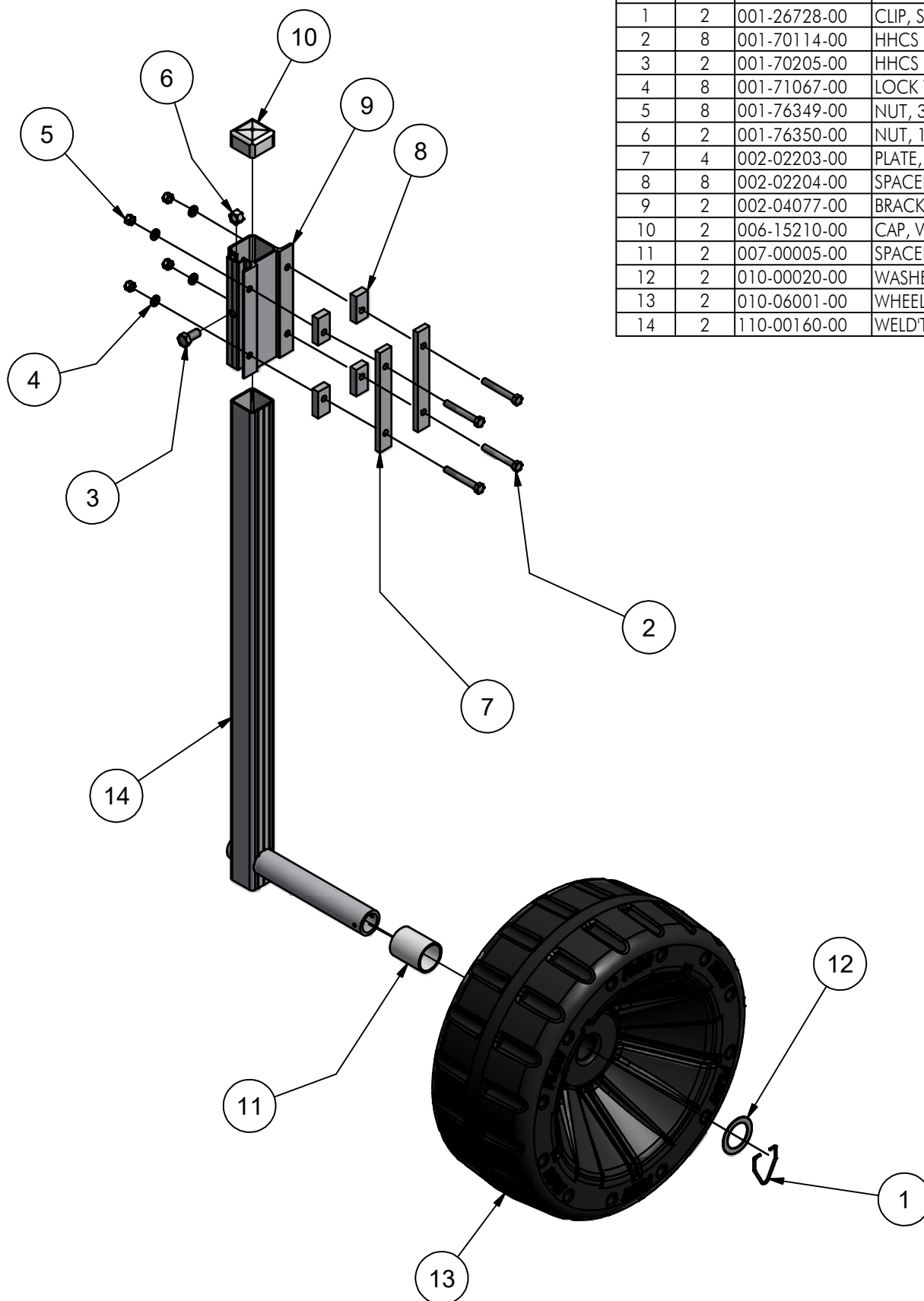
TOOLS REQUIRED

- 9/16" WRENCH
- 9/16" SOCKET
- 3/4" SOCKET
- TORQUE WRENCH

FLOE SHORE END WHEEL KIT

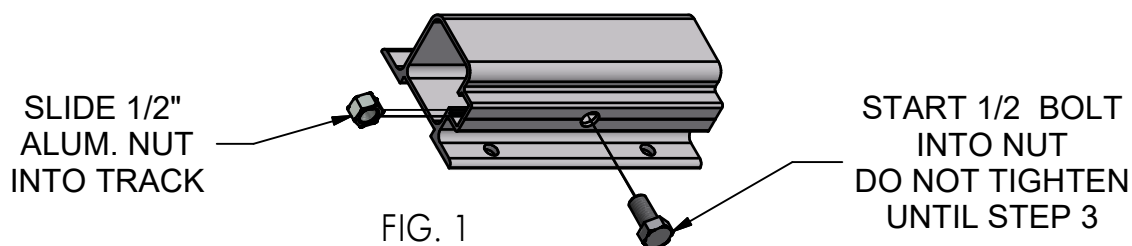
P/N 510-07105-00

ITEM	QTY	PART NUMBER	DESCRIPTION
1	2	001-26728-00	CLIP, SPINDLE SS
2	8	001-70114-00	HHCS 3/8-16 X 2 3/4" SS
3	2	001-70205-00	HHCS 1/2-13 X 1" SS
4	8	001-71067-00	LOCK WASHER 3/8" SS
5	8	001-76349-00	NUT, 3/8-16 ALUM.
6	2	001-76350-00	NUT, 1/2-13 ALUM.
7	4	002-02203-00	PLATE, DOCK ACCESSORY
8	8	002-02204-00	SPACER, DOCK ACCESSORY
9	2	002-04077-00	BRACKET, WHEEL KIT- MTG
10	2	006-15210-00	CAP, VINYL 2" SQ
11	2	007-00005-00	SPACER, 2.5"
12	2	010-00020-00	WASHER, 2.5" O.D X 1.75" I.D. SS
13	2	010-06001-00	WHEEL, PLASTIC (DRILLED)
14	2	110-00160-00	WELD'T, WHEEL KIT



STEP 1

- PREPARE BRACKET



STEP 2

- MOUNT BRACKET TO DOCK.

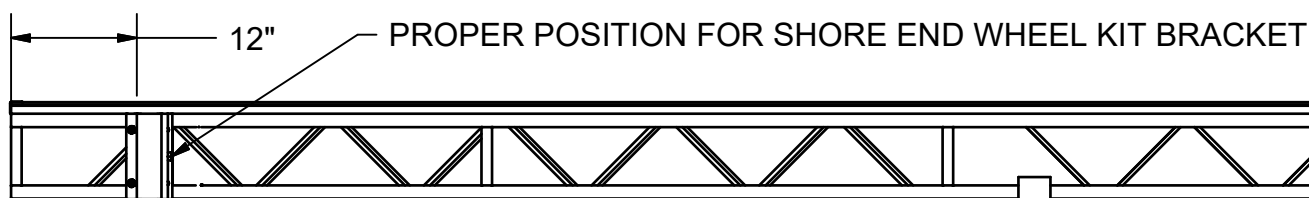
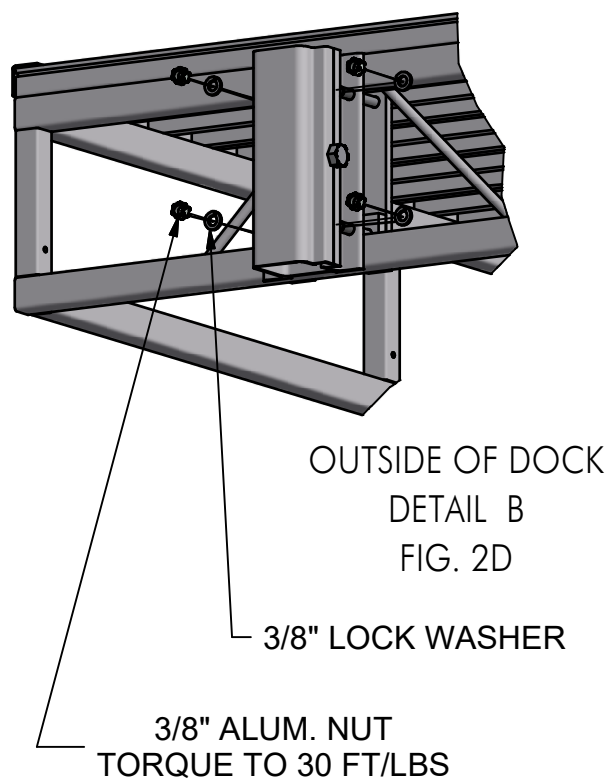
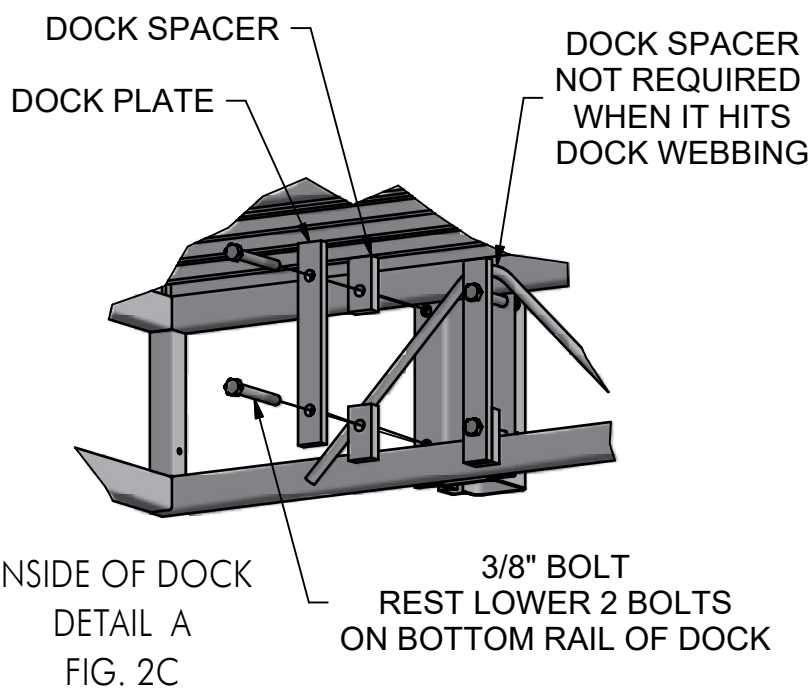
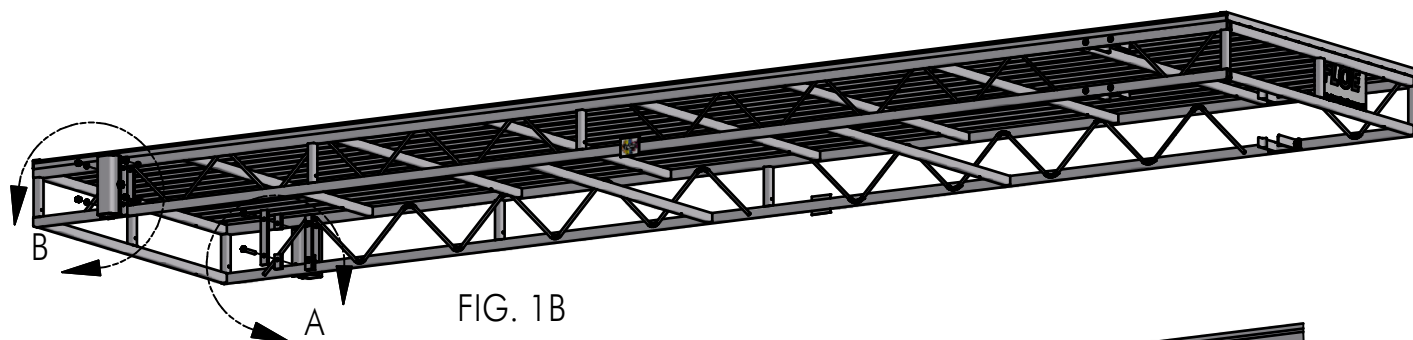


FIG. 1A



STEP 3

-ASSEMBLE WHEEL

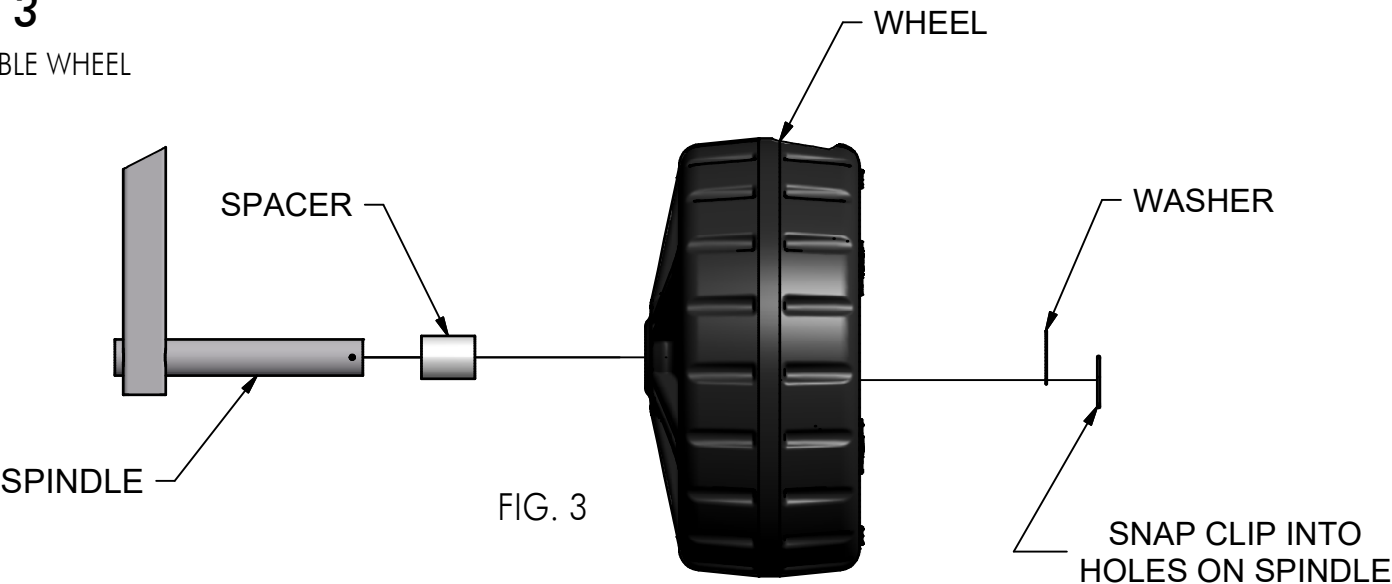


FIG. 3

STEP 4

- ASSEMBLE SHORE END WHEEL KIT TO DOCK.

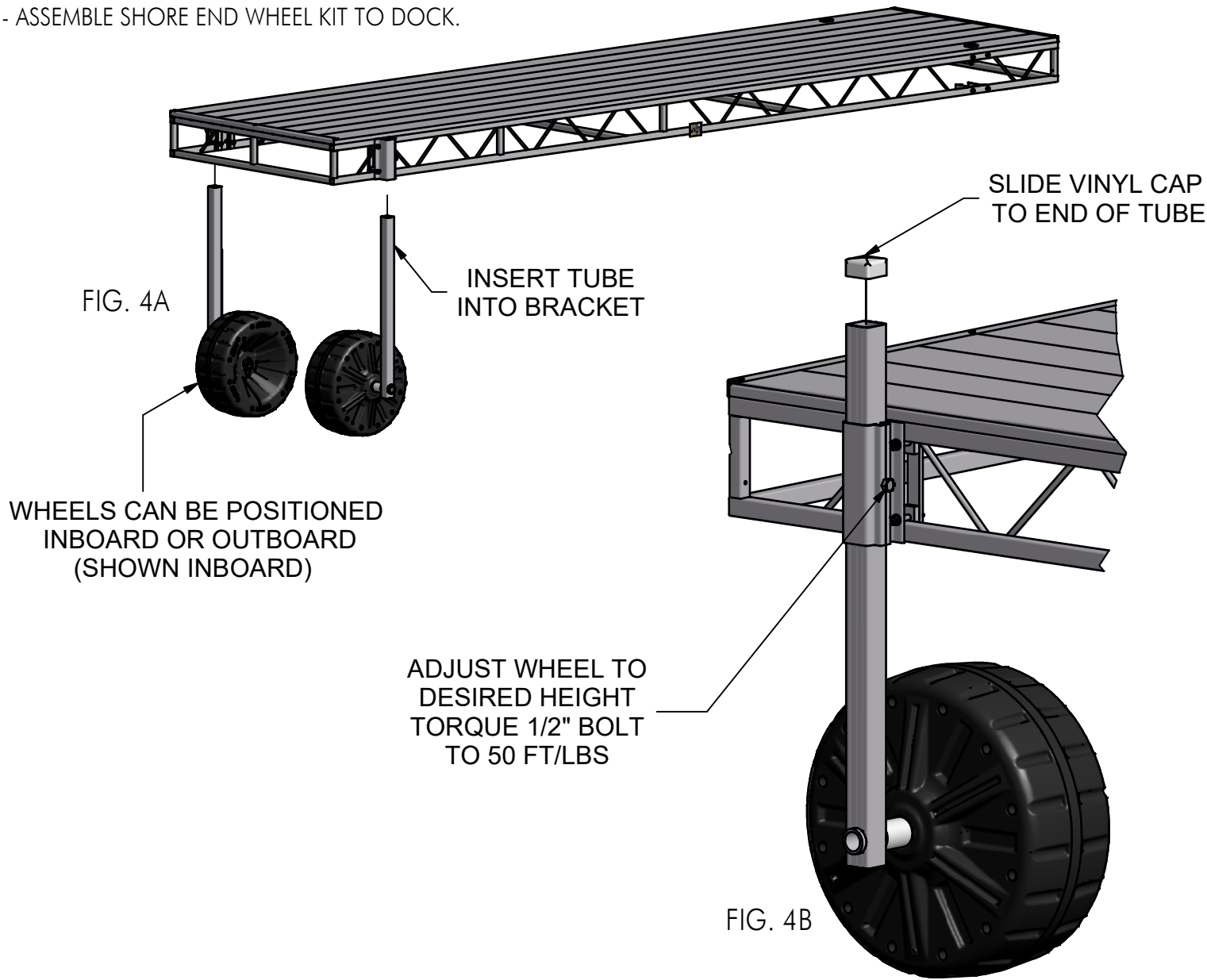


FIG. 4B