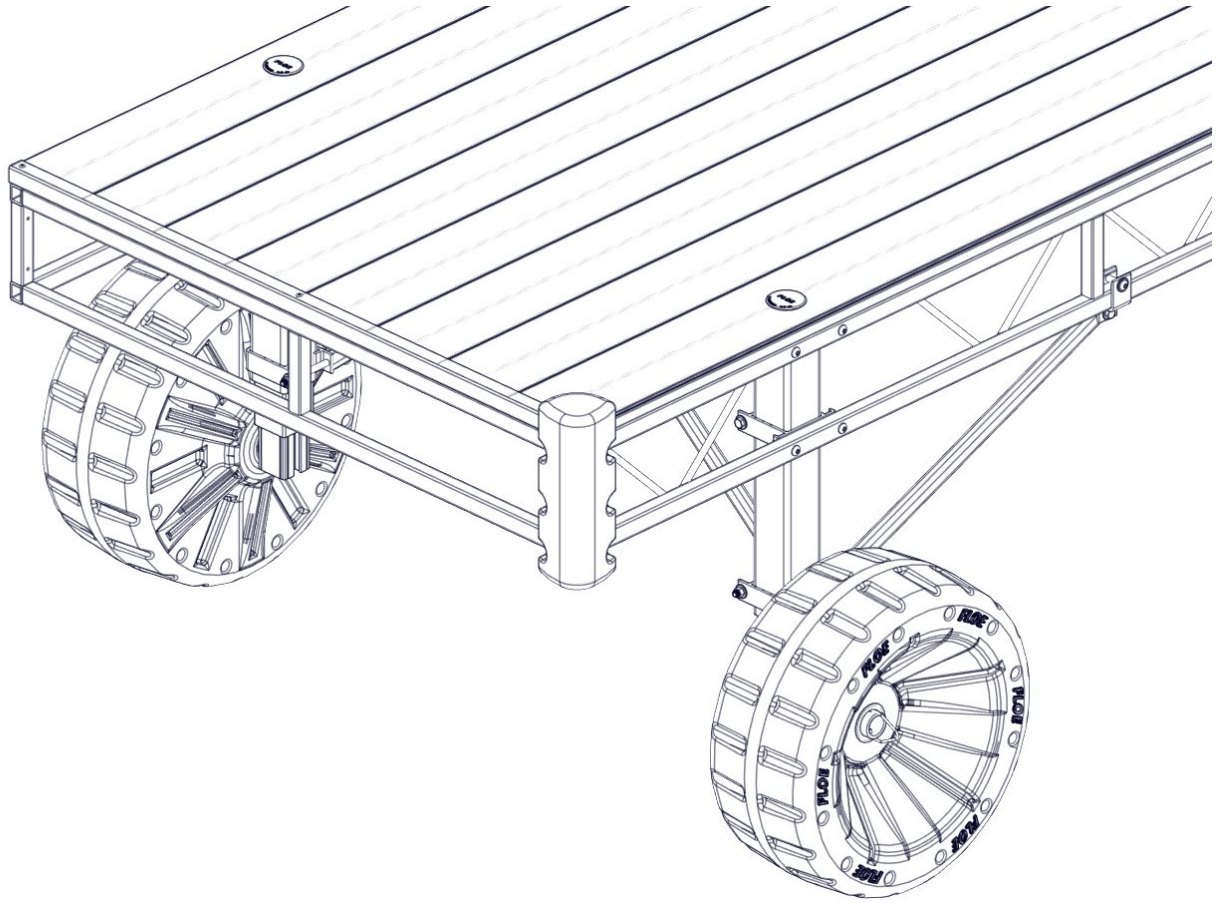


FLOE PREMIUM ROLL-IN CORNER BUMPER

ASSEMBLY INSTRUCTIONS

KIT P/N 510-04101-01



***DOCKS AND LEGS NOT INCLUDED**

TOOLS REQUIRED

- CORDLESS DRILL
- #9 DRILL BIT
- RIVET TOOL

INSTRUCTION P/N: 610-04101-01
RELEASED 07/13/20

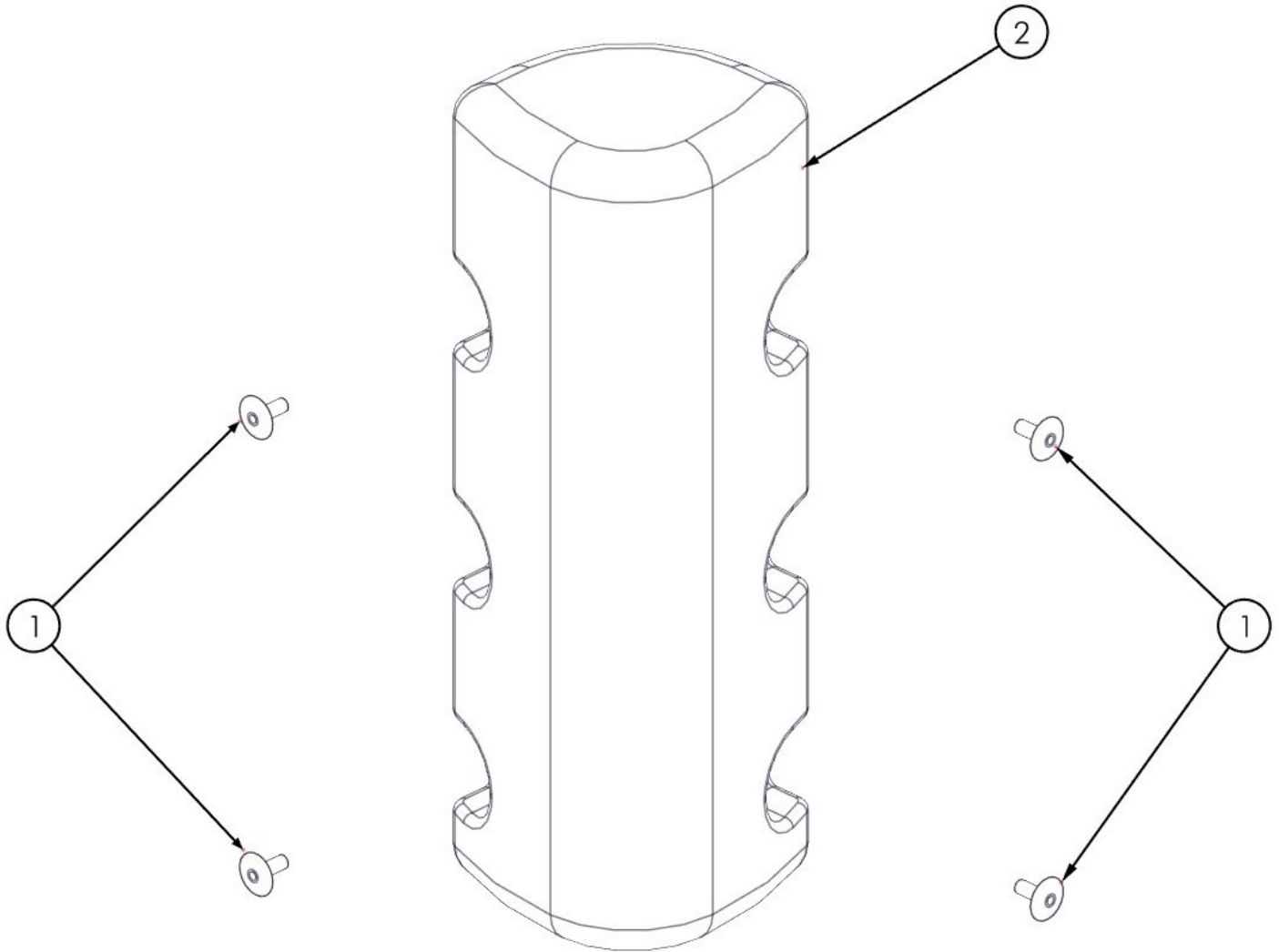
SHEET 1 OF 4

© Manufactured by:
Floe International Inc.
48473 State Hwy. 65
McGregor, MN 55760
www.floeintl.com

BILL OF MATERIALS

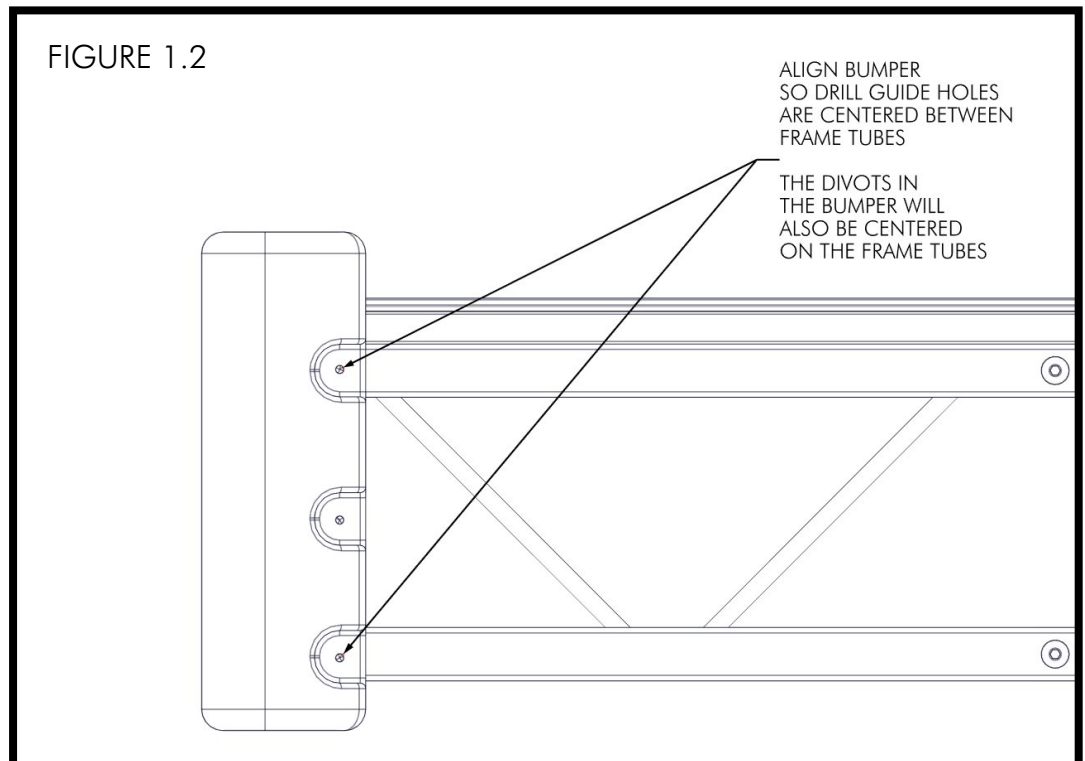
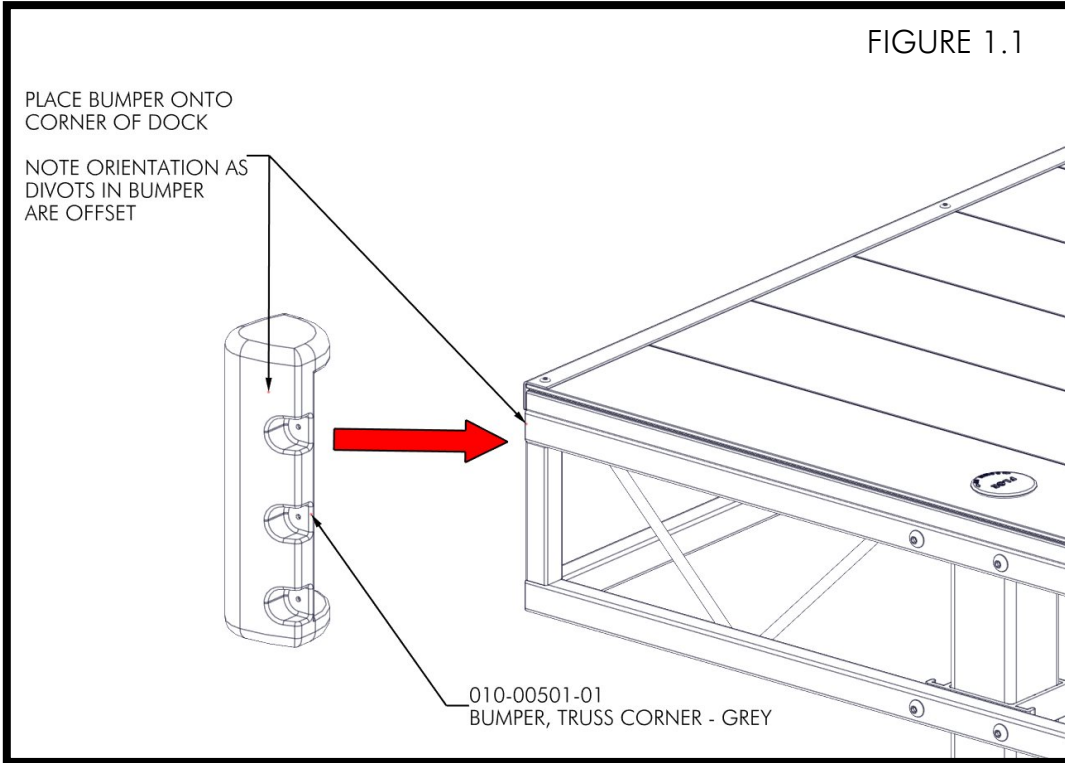
510-04101-01		PREMIUM ROLL-IN CORNER BUMPER		
NUMBER	PART NUMBER	QTY.	DESCRIPTION	
1	001-05700-00	4	RIVET, ABL6-8 3/16" X 1/2"	
2	010-00501-01	1	BUMPER, TRUSS CORNER - GREY	

EXPLODED VIEW



INSTALLATION

PLACE BUMPER ONTO CORNER OF THE DOCK. NOTE ORIENTATION, AS THE DIVOTS IN THE BUMPER ARE OFFSET (FIGURE 1.1). ALIGN THE BUMPER SO THE DRILL GUIDES ARE CENTERED BETWEEN THE FRAME TUBES. THE DIVOTS IN THE BUMPER WILL ALSO BE CENTERED ON THE FRAME TUBES (FIGURE 1.2).



WHILE HOLDING THE BUMPER SECURELY TO THE CORNER OF THE DOCK, DRILL (4) HOLES THROUGH THE BUMPER AND INTO THE DOCK FRAME TUBES USING A #9 DRILL BIT (FIGURE 1.3). INSTALL (4) 3/16" X 1/2" RIVETS INTO THE BUMPER USING A RIVET TOOL (FIGURE 1.4).

FIGURE 1.3

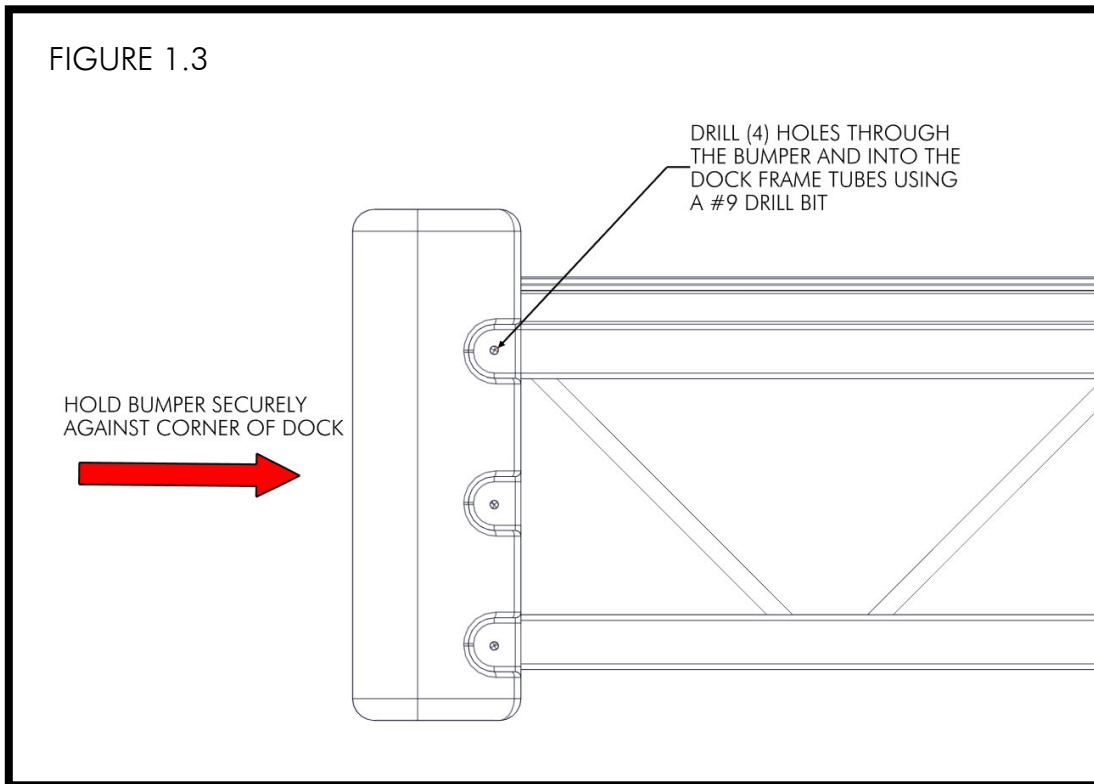


FIGURE 1.4

